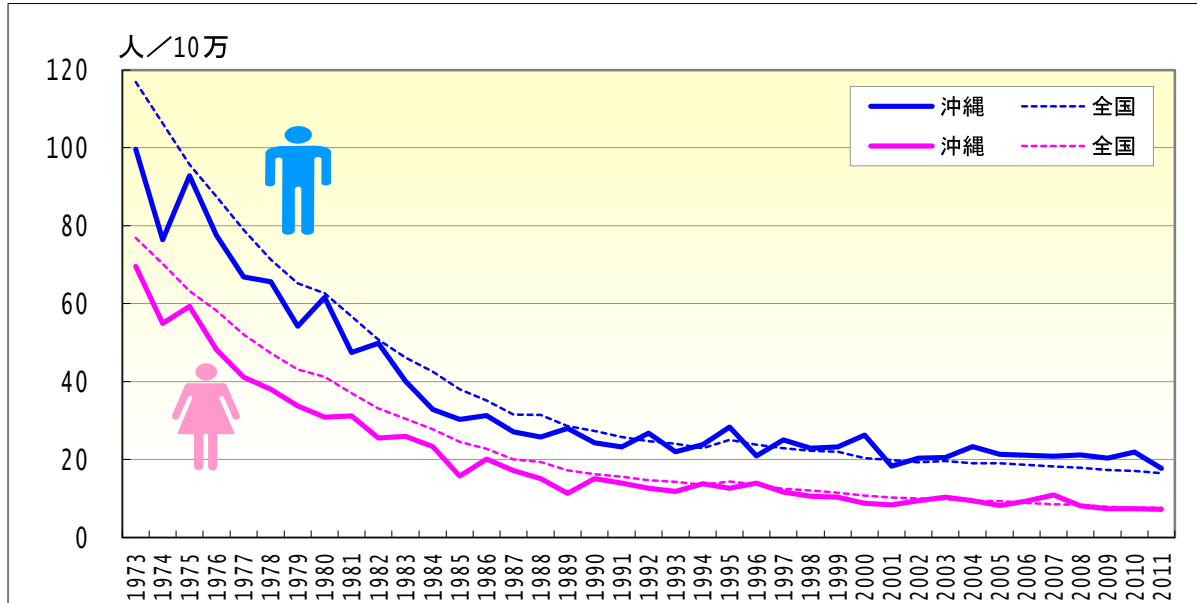


脳出血

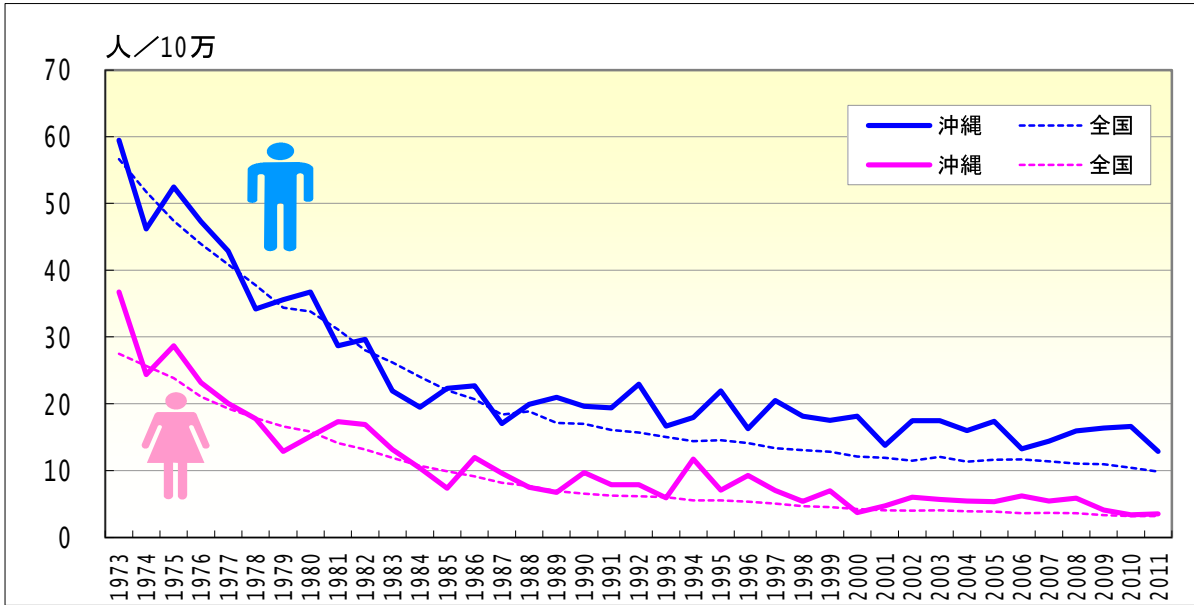
● 年齢調整死亡率の年次推移（沖縄、全国：1973-2011）



| | 男性 | | | | 女性 | | | |
|------|-------|-------|---------|--------|-------|-------|---------|-------|
| | 粗死亡率 | | 年齢調整死亡率 | | 粗死亡率 | | 年齢調整死亡率 | |
| | 沖縄 | 全国 | 沖縄 | 全国 | 沖縄 | 全国 | 沖縄 | 全国 |
| 1973 | 50.81 | 74.99 | 99.61 | 116.93 | 54.23 | 60.59 | 69.51 | 76.88 |
| 1974 | 40.15 | 69.44 | 76.33 | 106.28 | 45.16 | 56.58 | 54.92 | 70.23 |
| 1975 | 50.26 | 63.87 | 92.79 | 95.70 | 49.53 | 52.65 | 59.29 | 63.25 |
| 1976 | 42.80 | 59.68 | 77.50 | 87.42 | 40.73 | 49.64 | 48.26 | 58.22 |
| 1977 | 38.42 | 55.37 | 66.86 | 78.97 | 36.56 | 45.96 | 41.15 | 52.12 |
| 1978 | 37.36 | 51.31 | 65.59 | 71.27 | 35.41 | 43.09 | 38.02 | 47.32 |
| 1979 | 32.78 | 48.22 | 54.21 | 65.18 | 32.30 | 40.56 | 33.74 | 43.14 |
| 1980 | 36.82 | 47.43 | 61.55 | 62.69 | 29.08 | 39.99 | 30.90 | 41.20 |
| 1981 | 29.70 | 44.02 | 47.42 | 56.71 | 30.66 | 37.05 | 31.20 | 36.96 |
| 1982 | 31.96 | 40.47 | 49.88 | 50.74 | 26.10 | 34.33 | 25.55 | 33.06 |
| 1983 | 26.37 | 37.82 | 40.06 | 46.07 | 26.65 | 32.76 | 25.92 | 30.45 |
| 1984 | 21.98 | 35.65 | 32.82 | 42.48 | 25.48 | 30.89 | 23.32 | 27.76 |
| 1985 | 21.15 | 32.92 | 30.31 | 37.98 | 17.63 | 28.45 | 15.76 | 24.52 |
| 1986 | 22.76 | 31.31 | 31.28 | 35.11 | 22.30 | 27.21 | 20.06 | 22.66 |
| 1987 | 20.09 | 28.92 | 27.10 | 31.50 | 19.47 | 25.12 | 17.14 | 20.04 |
| 1988 | 19.99 | 29.70 | 25.72 | 31.40 | 19.31 | 25.22 | 15.09 | 19.39 |
| 1989 | 22.08 | 27.77 | 27.97 | 28.55 | 14.12 | 23.28 | 11.33 | 17.21 |
| 1990 | 20.13 | 27.46 | 24.23 | 27.34 | 19.47 | 22.81 | 15.07 | 16.26 |
| 1991 | 19.63 | 26.57 | 23.20 | 25.73 | 18.69 | 22.56 | 13.95 | 15.53 |
| 1992 | 23.11 | 26.21 | 26.79 | 24.65 | 16.33 | 22.10 | 12.62 | 14.66 |
| 1993 | 19.48 | 26.24 | 21.97 | 24.01 | 16.36 | 22.24 | 11.75 | 14.24 |
| 1994 | 21.44 | 25.71 | 23.78 | 22.86 | 17.33 | 21.91 | 13.72 | 13.53 |
| 1995 | 26.42 | 28.95 | 28.35 | 25.06 | 18.45 | 24.53 | 12.61 | 14.34 |
| 1996 | 19.83 | 28.31 | 20.91 | 23.81 | 20.48 | 24.10 | 13.99 | 13.54 |
| 1997 | 24.60 | 27.98 | 25.05 | 22.87 | 17.74 | 22.99 | 11.61 | 12.45 |
| 1998 | 23.31 | 27.98 | 22.81 | 22.24 | 17.16 | 23.14 | 10.61 | 12.03 |
| 1999 | 23.77 | 28.40 | 23.26 | 21.99 | 16.75 | 22.79 | 10.37 | 11.44 |
| 2000 | 27.78 | 27.31 | 26.24 | 20.34 | 15.29 | 22.23 | 8.75 | 10.76 |
| 2001 | 20.20 | 27.42 | 18.27 | 19.85 | 16.53 | 22.13 | 8.31 | 10.23 |
| 2002 | 22.37 | 27.39 | 20.37 | 19.26 | 17.30 | 22.28 | 9.42 | 9.95 |
| 2003 | 23.45 | 28.65 | 20.52 | 19.65 | 18.66 | 22.82 | 10.24 | 9.83 |
| 2004 | 27.84 | 28.64 | 23.32 | 18.99 | 17.81 | 22.32 | 9.44 | 9.33 |
| 2005 | 25.41 | 29.67 | 21.32 | 19.02 | 15.51 | 23.35 | 8.15 | 9.30 |
| 2006 | 26.20 | 29.74 | 21.10 | 18.61 | 18.47 | 23.18 | 9.34 | 8.86 |
| 2007 | 26.84 | 29.92 | 20.81 | 18.22 | 20.54 | 22.78 | 10.93 | 8.48 |
| 2008 | 27.62 | 30.36 | 21.22 | 17.89 | 16.87 | 23.23 | 8.07 | 8.34 |
| 2009 | 27.06 | 29.99 | 20.31 | 17.28 | 16.94 | 22.56 | 7.36 | 7.83 |
| 2010 | 30.18 | 30.54 | 21.94 | 17.05 | 17.14 | 22.98 | 7.37 | 7.62 |
| 2011 | 25.36 | 30.36 | 17.72 | 16.46 | 18.76 | 23.80 | 7.24 | 7.63 |

脳出血

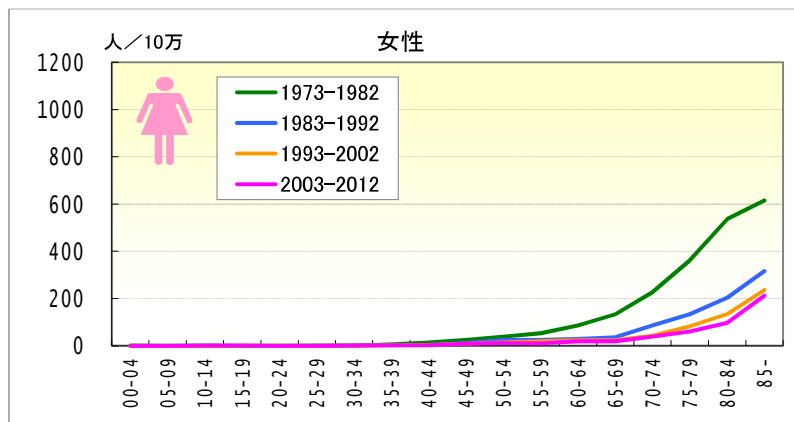
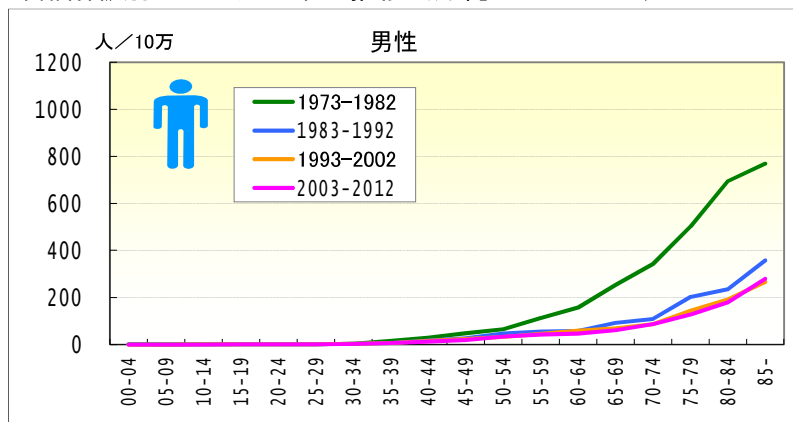
● 年齢調整死亡率（20-64歳）の年次推移（沖縄、全国：1973-2011）



| | 男性 | | | | 女性 | | | |
|------|---------|--------|--------------|-------|---------|-------|--------------|-------|
| | 年齢調整死亡率 | | 20-64年齢調整死亡率 | | 年齢調整死亡率 | | 20-64年齢調整死亡率 | |
| | 沖縄 | 全国 | 沖縄 | 全国 | 沖縄 | 全国 | 沖縄 | 全国 |
| 1973 | 99.61 | 116.93 | 59.47 | 56.65 | 69.51 | 76.88 | 36.73 | 27.47 |
| 1974 | 76.33 | 106.28 | 46.21 | 51.74 | 54.92 | 70.23 | 24.36 | 25.63 |
| 1975 | 92.79 | 95.70 | 52.45 | 47.37 | 59.29 | 63.25 | 28.67 | 23.85 |
| 1976 | 77.50 | 87.42 | 47.28 | 43.94 | 48.26 | 58.22 | 23.16 | 21.07 |
| 1977 | 66.86 | 78.97 | 42.88 | 40.86 | 41.15 | 52.12 | 20.04 | 19.30 |
| 1978 | 65.59 | 71.27 | 34.19 | 37.73 | 38.02 | 47.32 | 17.78 | 17.85 |
| 1979 | 54.21 | 65.18 | 35.60 | 34.41 | 33.74 | 43.14 | 12.85 | 16.61 |
| 1980 | 61.55 | 62.69 | 36.77 | 33.82 | 30.90 | 41.20 | 15.13 | 15.85 |
| 1981 | 47.42 | 56.71 | 28.68 | 31.13 | 31.20 | 36.96 | 17.32 | 14.12 |
| 1982 | 49.88 | 50.74 | 29.66 | 27.98 | 25.55 | 33.06 | 16.92 | 13.16 |
| 1983 | 40.06 | 46.07 | 21.92 | 26.20 | 25.92 | 30.45 | 13.12 | 11.89 |
| 1984 | 32.82 | 42.48 | 19.45 | 24.04 | 23.32 | 27.76 | 10.38 | 10.69 |
| 1985 | 30.31 | 37.98 | 22.31 | 22.02 | 15.76 | 24.52 | 7.38 | 9.89 |
| 1986 | 31.28 | 35.11 | 22.68 | 20.70 | 20.06 | 22.66 | 11.97 | 9.09 |
| 1987 | 27.10 | 31.50 | 17.03 | 18.35 | 17.14 | 20.04 | 9.59 | 8.17 |
| 1988 | 25.72 | 31.40 | 19.92 | 18.86 | 15.09 | 19.39 | 7.52 | 7.67 |
| 1989 | 27.97 | 28.55 | 20.98 | 17.12 | 11.33 | 17.21 | 6.71 | 6.92 |
| 1990 | 24.23 | 27.34 | 19.61 | 16.98 | 15.07 | 16.26 | 9.71 | 6.56 |
| 1991 | 23.20 | 25.73 | 19.38 | 16.09 | 13.95 | 15.53 | 7.89 | 6.28 |
| 1992 | 26.79 | 24.65 | 22.97 | 15.71 | 12.62 | 14.66 | 7.86 | 6.19 |
| 1993 | 21.97 | 24.01 | 16.69 | 15.00 | 11.75 | 14.24 | 5.90 | 5.97 |
| 1994 | 23.78 | 22.86 | 17.96 | 14.43 | 13.72 | 13.53 | 11.70 | 5.55 |
| 1995 | 28.35 | 25.06 | 21.92 | 14.54 | 12.61 | 14.34 | 7.06 | 5.53 |
| 1996 | 20.91 | 23.81 | 16.27 | 14.10 | 13.99 | 13.54 | 9.29 | 5.36 |
| 1997 | 25.05 | 22.87 | 20.48 | 13.33 | 11.61 | 12.45 | 7.02 | 5.08 |
| 1998 | 22.81 | 22.24 | 18.15 | 13.03 | 10.61 | 12.03 | 5.40 | 4.64 |
| 1999 | 23.26 | 21.99 | 17.52 | 12.84 | 10.37 | 11.44 | 6.94 | 4.50 |
| 2000 | 26.24 | 20.34 | 18.16 | 12.11 | 8.75 | 10.76 | 3.69 | 4.26 |
| 2001 | 18.27 | 19.85 | 13.78 | 11.91 | 8.31 | 10.23 | 4.71 | 4.08 |
| 2002 | 20.37 | 19.26 | 17.47 | 11.51 | 9.42 | 9.95 | 6.04 | 4.00 |
| 2003 | 20.52 | 19.65 | 17.43 | 12.05 | 10.24 | 9.83 | 5.68 | 4.08 |
| 2004 | 23.32 | 18.99 | 16.00 | 11.34 | 9.44 | 9.33 | 5.42 | 3.93 |
| 2005 | 21.32 | 19.02 | 17.38 | 11.62 | 8.15 | 9.30 | 5.35 | 3.84 |
| 2006 | 21.10 | 18.61 | 13.23 | 11.66 | 9.34 | 8.86 | 6.22 | 3.63 |
| 2007 | 20.81 | 18.22 | 14.41 | 11.40 | 10.93 | 8.48 | 5.46 | 3.66 |
| 2008 | 21.22 | 17.89 | 15.92 | 11.04 | 8.07 | 8.34 | 5.87 | 3.58 |
| 2009 | 20.31 | 17.28 | 16.36 | 10.96 | 7.36 | 7.83 | 4.12 | 3.35 |
| 2010 | 21.94 | 17.05 | 16.61 | 10.42 | 7.37 | 7.62 | 3.36 | 3.19 |
| 2011 | 17.72 | 16.46 | 12.88 | 9.86 | 7.24 | 7.63 | 3.53 | 3.20 |

脳出血

● 年齢階級別にみた死亡率の推移（沖縄：1973-2011）

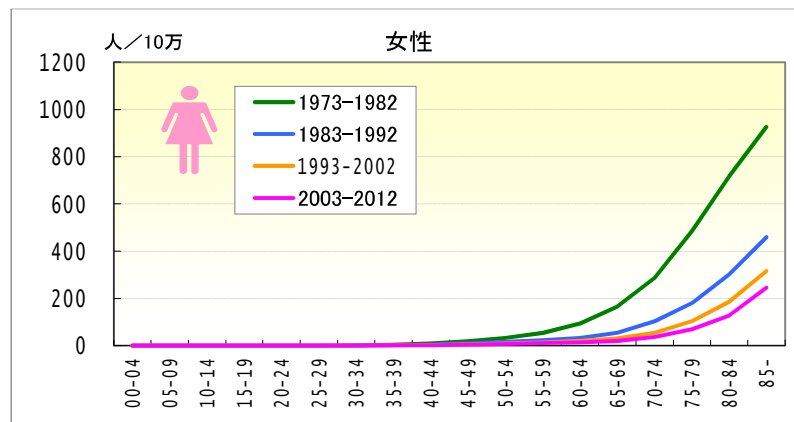
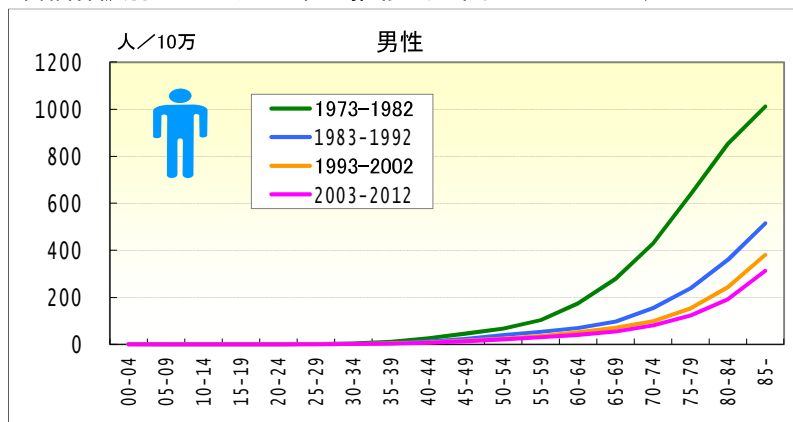


● 年齢階級別、性別*期間別死亡率（沖縄：1973-2011年）

| | | 総数 | 00-04 | 05-09 | 10-14 | 15-19 | 20-24 | 25-29 | 30-34 | 35-39 | 40-44 | 45-49 | 50-54 | 55-59 | 60-64 | 65-69 | 70-74 | 75-79 | 80-84 | 85- |
|-----------|-----------|-------|-------|-------|-------|-------|-------|-------|-------|-------|-------|-------|-------|--------|--------|--------|--------|--------|--------|--------|
| 男 | 1973-1977 | 44.43 | 1.75 | 0.00 | 0.00 | 0.39 | 0.87 | 1.40 | 5.52 | 16.38 | 35.28 | 50.67 | 73.92 | 140.88 | 209.74 | 322.81 | 442.08 | 533.60 | 846.71 | 922.68 |
| | 1978-1982 | 33.69 | 0.37 | 0.35 | 0.37 | 0.00 | 0.98 | 0.80 | 2.26 | 12.55 | 24.52 | 45.45 | 58.49 | 90.19 | 109.99 | 193.26 | 256.88 | 474.72 | 562.60 | 659.52 |
| | 1973-1982 | 38.88 | 1.09 | 0.18 | 0.18 | 0.20 | 0.92 | 1.08 | 3.64 | 14.51 | 29.80 | 47.73 | 64.92 | 113.22 | 156.89 | 253.47 | 341.45 | 501.68 | 694.55 | 768.32 |
| | 1983-1987 | 22.44 | 0.39 | 0.00 | 0.00 | 0.00 | 0.51 | 1.23 | 3.06 | 4.47 | 18.33 | 28.99 | 46.82 | 52.12 | 57.80 | 106.55 | 150.97 | 229.58 | 265.39 | 503.18 |
| | 1988-1992 | 20.99 | 0.00 | 0.00 | 0.37 | 0.76 | 0.00 | 1.43 | 2.55 | 7.01 | 15.57 | 25.46 | 46.57 | 58.17 | 58.04 | 79.37 | 72.69 | 179.88 | 212.36 | 243.88 |
| | 1983-1992 | 21.71 | 0.20 | 0.00 | 0.18 | 0.39 | 0.25 | 1.32 | 2.82 | 5.83 | 16.80 | 27.26 | 46.69 | 55.52 | 57.94 | 91.68 | 108.93 | 202.49 | 235.69 | 357.13 |
| | 1993-1997 | 22.37 | 0.00 | 0.00 | 0.78 | 0.79 | 1.30 | 0.47 | 5.96 | 5.05 | 15.73 | 23.81 | 32.87 | 49.13 | 61.71 | 70.18 | 88.10 | 157.16 | 204.10 | 256.09 |
| | 1998-2002 | 23.48 | 0.00 | 0.00 | 0.41 | 0.41 | 0.00 | 0.42 | 1.80 | 5.82 | 15.58 | 24.64 | 31.29 | 41.02 | 56.95 | 67.23 | 85.08 | 132.28 | 182.87 | 274.78 |
| | 1993-2002 | 22.93 | 0.00 | 0.00 | 0.60 | 0.60 | 0.67 | 0.44 | 3.86 | 5.42 | 15.66 | 24.26 | 31.98 | 45.12 | 59.23 | 68.51 | 86.35 | 143.42 | 192.59 | 266.60 |
| | 2003-2007 | 25.96 | 0.00 | 0.00 | 0.00 | 0.44 | 0.00 | 0.88 | 2.01 | 7.42 | 11.57 | 17.80 | 34.51 | 41.43 | 47.14 | 66.29 | 85.49 | 135.09 | 190.29 | 285.72 |
| 2008-2012 | 27.55 | 0.00 | 0.00 | 0.00 | 0.58 | 0.65 | 0.00 | 1.59 | 3.38 | 12.66 | 21.79 | 31.82 | 43.81 | 45.23 | 54.05 | 88.30 | 119.12 | 169.82 | 273.67 | |
| 2003-2012 | 26.67 | 0.00 | 0.00 | 0.00 | 0.50 | 0.28 | 0.50 | 1.83 | 5.50 | 12.06 | 19.52 | 33.35 | 42.59 | 46.18 | 61.01 | 86.81 | 126.93 | 179.59 | 279.87 | |
| 女 | 1973-1977 | 45.15 | 0.73 | 0.00 | 0.37 | 0.00 | 0.92 | 1.00 | 1.24 | 7.22 | 15.22 | 28.66 | 48.09 | 69.18 | 116.06 | 180.08 | 320.16 | 455.97 | 692.42 | 690.75 |
| | 1978-1982 | 30.66 | 0.78 | 0.36 | 0.00 | 0.00 | 0.50 | 0.85 | 1.45 | 4.13 | 12.01 | 20.87 | 29.73 | 39.43 | 61.51 | 91.99 | 143.92 | 284.66 | 404.19 | 559.24 |
| | 1973-1982 | 37.69 | 0.76 | 0.19 | 0.19 | 0.00 | 0.72 | 0.92 | 1.36 | 5.72 | 13.57 | 24.51 | 38.03 | 53.15 | 86.87 | 133.12 | 226.02 | 360.78 | 535.70 | 615.23 |
| | 1983-1987 | 22.27 | 1.23 | 0.00 | 0.00 | 0.00 | 0.00 | 0.44 | 2.47 | 2.42 | 5.37 | 15.57 | 26.72 | 27.97 | 27.81 | 42.63 | 118.24 | 191.13 | 215.51 | 363.43 |
| | 1988-1992 | 17.58 | 0.44 | 0.00 | 0.38 | 1.17 | 0.00 | 0.00 | 1.74 | 2.48 | 2.94 | 6.65 | 21.55 | 20.71 | 29.85 | 29.37 | 58.68 | 82.67 | 192.18 | 281.24 |
| | 1983-1992 | 19.87 | 0.85 | 0.00 | 0.19 | 0.61 | 0.00 | 0.23 | 2.12 | 2.45 | 4.03 | 11.22 | 24.05 | 24.10 | 28.92 | 35.48 | 86.29 | 132.75 | 202.77 | 316.14 |
| | 1993-1997 | 18.08 | 0.48 | 0.00 | 0.00 | 0.41 | 0.00 | 0.00 | 0.45 | 3.03 | 4.19 | 11.90 | 18.92 | 22.35 | 25.47 | 19.36 | 53.68 | 97.33 | 161.14 | 230.25 |
| | 1998-2002 | 16.61 | 0.00 | 0.00 | 0.00 | 0.00 | 0.92 | 0.82 | 0.88 | 1.79 | 2.17 | 5.06 | 10.04 | 15.43 | 20.13 | 24.67 | 33.93 | 68.77 | 110.57 | 242.56 |
| | 1993-2002 | 17.33 | 0.24 | 0.00 | 0.00 | 0.21 | 0.45 | 0.43 | 0.67 | 2.42 | 3.20 | 8.21 | 14.05 | 18.97 | 22.70 | 22.20 | 42.91 | 81.89 | 133.83 | 237.14 |
| | 2003-2007 | 18.20 | 0.00 | 0.00 | 0.47 | 0.00 | 0.00 | 0.00 | 0.79 | 3.01 | 3.14 | 8.72 | 10.21 | 10.56 | 22.95 | 19.95 | 47.90 | 70.14 | 105.00 | 204.91 |
| 2008-2012 | 17.43 | 0.00 | 0.00 | 0.00 | 0.61 | 0.00 | 0.00 | 1.04 | 0.48 | 1.63 | 7.92 | 10.94 | 7.89 | 14.14 | 17.15 | 26.19 | 49.46 | 88.96 | 219.95 | |
| 2003-2012 | 17.85 | 0.00 | 0.00 | 0.26 | 0.26 | 0.00 | 0.00 | 0.90 | 1.82 | 2.46 | 8.37 | 10.53 | 9.26 | 18.62 | 18.76 | 37.76 | 60.25 | 97.12 | 212.16 | |

脳出血

● 年齢階級別にみた死亡率の推移（全国：1973-2011）



● 年齢階級別、性別*期間別死亡率（全国：1973-2011年）

| | | 総数 | 00-04 | 05-09 | 10-14 | 15-19 | 20-24 | 25-29 | 30-34 | 35-39 | 40-44 | 45-49 | 50-54 | 55-59 | 60-64 | 65-69 | 70-74 | 75-79 | 80-84 | 85- |
|-----------|-----------|-------|-------|-------|-------|-------|-------|-------|-------|-------|-------|-------|-------|--------|--------|--------|--------|--------|----------|----------|
| 男 | 1973-1977 | 64.54 | 1.26 | 0.24 | 0.19 | 0.36 | 0.68 | 1.39 | 4.59 | 12.85 | 30.89 | 51.30 | 76.25 | 128.58 | 217.84 | 353.55 | 554.21 | 815.11 | 1,089.71 | 1,250.63 |
| | 1978-1982 | 46.25 | 1.20 | 0.21 | 0.18 | 0.37 | 0.59 | 1.27 | 3.36 | 9.32 | 21.55 | 42.00 | 60.37 | 82.76 | 131.46 | 210.42 | 320.72 | 494.34 | 678.10 | 843.82 |
| | 1973-1982 | 55.17 | 1.23 | 0.22 | 0.18 | 0.36 | 0.64 | 1.33 | 3.93 | 11.03 | 26.15 | 46.40 | 67.18 | 103.25 | 174.35 | 278.23 | 428.84 | 638.66 | 852.41 | 1,012.26 |
| | 1983-1987 | 33.30 | 0.80 | 0.18 | 0.20 | 0.35 | 0.47 | 1.02 | 2.28 | 6.12 | 14.21 | 26.92 | 45.73 | 59.83 | 78.94 | 119.06 | 187.64 | 287.62 | 429.63 | 600.17 |
| | 1988-1992 | 27.54 | 0.67 | 0.14 | 0.18 | 0.28 | 0.53 | 0.87 | 1.82 | 4.55 | 10.45 | 19.67 | 32.51 | 48.21 | 62.75 | 78.89 | 121.00 | 195.71 | 304.12 | 452.25 |
| | 1983-1992 | 30.39 | 0.74 | 0.16 | 0.19 | 0.32 | 0.51 | 0.94 | 2.07 | 5.39 | 12.19 | 23.17 | 39.01 | 53.70 | 69.68 | 96.73 | 153.62 | 237.94 | 359.63 | 514.05 |
| | 1993-1997 | 27.44 | 0.36 | 0.13 | 0.18 | 0.26 | 0.42 | 0.70 | 1.56 | 3.82 | 8.62 | 15.90 | 26.35 | 39.05 | 57.75 | 73.85 | 103.60 | 166.43 | 261.70 | 410.92 |
| | 1998-2002 | 27.70 | 0.19 | 0.08 | 0.12 | 0.20 | 0.32 | 0.62 | 1.53 | 3.59 | 7.57 | 14.85 | 23.53 | 33.14 | 46.15 | 67.49 | 93.01 | 141.30 | 227.66 | 358.45 |
| | 1993-2002 | 27.57 | 0.27 | 0.11 | 0.15 | 0.23 | 0.37 | 0.65 | 1.54 | 3.70 | 8.14 | 15.41 | 24.83 | 35.99 | 51.81 | 70.48 | 97.52 | 152.23 | 243.80 | 380.75 |
| | 2003-2007 | 29.32 | 0.08 | 0.11 | 0.14 | 0.17 | 0.37 | 0.58 | 1.42 | 3.51 | 7.18 | 13.89 | 22.52 | 31.51 | 43.11 | 58.21 | 86.42 | 128.28 | 196.82 | 324.40 |
| 2008-2012 | 30.31 | 0.11 | 0.10 | 0.07 | 0.21 | 0.22 | 0.47 | 1.36 | 3.05 | 6.73 | 12.39 | 20.20 | 29.75 | 38.72 | 51.68 | 74.65 | 116.67 | 188.10 | 301.66 | |
| 2003-2012 | 29.76 | 0.09 | 0.11 | 0.11 | 0.19 | 0.31 | 0.53 | 1.40 | 3.29 | 6.97 | 13.21 | 21.57 | 30.78 | 40.99 | 55.18 | 81.00 | 122.73 | 192.30 | 312.92 | |
| 女 | 1973-1977 | 53.00 | 1.03 | 0.18 | 0.18 | 0.19 | 0.42 | 0.64 | 1.36 | 3.89 | 10.13 | 20.73 | 38.89 | 67.58 | 118.12 | 209.96 | 369.59 | 617.96 | 909.84 | 1,138.56 |
| | 1978-1982 | 38.97 | 0.79 | 0.21 | 0.19 | 0.21 | 0.37 | 0.73 | 1.22 | 3.47 | 7.67 | 16.45 | 27.72 | 41.89 | 70.20 | 125.98 | 219.33 | 378.01 | 573.27 | 769.12 |
| | 1973-1982 | 45.82 | 0.92 | 0.19 | 0.18 | 0.20 | 0.40 | 0.68 | 1.28 | 3.67 | 8.88 | 18.49 | 32.92 | 53.58 | 93.20 | 164.53 | 287.38 | 485.28 | 716.50 | 926.37 |
| | 1983-1987 | 28.86 | 0.68 | 0.17 | 0.21 | 0.24 | 0.43 | 0.61 | 0.97 | 2.36 | 5.50 | 11.02 | 19.90 | 26.46 | 39.69 | 69.38 | 127.64 | 224.28 | 368.59 | 543.86 |
| | 1988-1992 | 23.19 | 0.43 | 0.12 | 0.13 | 0.23 | 0.29 | 0.45 | 0.80 | 1.69 | 3.69 | 7.60 | 12.93 | 18.84 | 26.05 | 42.89 | 79.23 | 143.79 | 248.76 | 400.02 |
| | 1983-1992 | 25.99 | 0.56 | 0.15 | 0.17 | 0.24 | 0.35 | 0.53 | 0.89 | 2.05 | 4.53 | 9.25 | 16.36 | 22.47 | 32.37 | 54.88 | 102.23 | 179.87 | 300.61 | 458.88 |
| | 1993-1997 | 23.16 | 0.28 | 0.11 | 0.13 | 0.18 | 0.22 | 0.41 | 0.74 | 1.25 | 3.30 | 5.96 | 10.47 | 14.62 | 22.42 | 34.39 | 62.28 | 118.24 | 206.78 | 348.10 |
| | 1998-2002 | 22.51 | 0.08 | 0.11 | 0.14 | 0.17 | 0.17 | 0.27 | 0.56 | 1.09 | 2.33 | 5.02 | 8.56 | 11.82 | 16.32 | 27.63 | 48.12 | 92.13 | 167.97 | 293.09 |
| | 1993-2002 | 22.83 | 0.18 | 0.11 | 0.13 | 0.17 | 0.19 | 0.34 | 0.64 | 1.17 | 2.85 | 5.52 | 9.44 | 13.17 | 19.31 | 30.84 | 54.65 | 103.76 | 185.95 | 315.72 |
| | 2003-2007 | 22.89 | 0.11 | 0.08 | 0.09 | 0.10 | 0.21 | 0.30 | 0.50 | 1.13 | 2.01 | 4.69 | 7.72 | 10.81 | 13.36 | 21.67 | 40.11 | 74.34 | 136.61 | 258.35 |
| 2008-2012 | 23.14 | 0.12 | 0.09 | 0.16 | 0.18 | 0.26 | 0.31 | 0.42 | 0.95 | 1.91 | 3.74 | 6.98 | 9.10 | 11.81 | 18.15 | 32.37 | 62.32 | 117.22 | 232.16 | |
| 2003-2012 | 23.00 | 0.11 | 0.09 | 0.12 | 0.13 | 0.23 | 0.30 | 0.47 | 1.04 | 1.97 | 4.27 | 7.42 | 10.09 | 12.62 | 20.05 | 36.58 | 68.67 | 127.14 | 245.10 | |