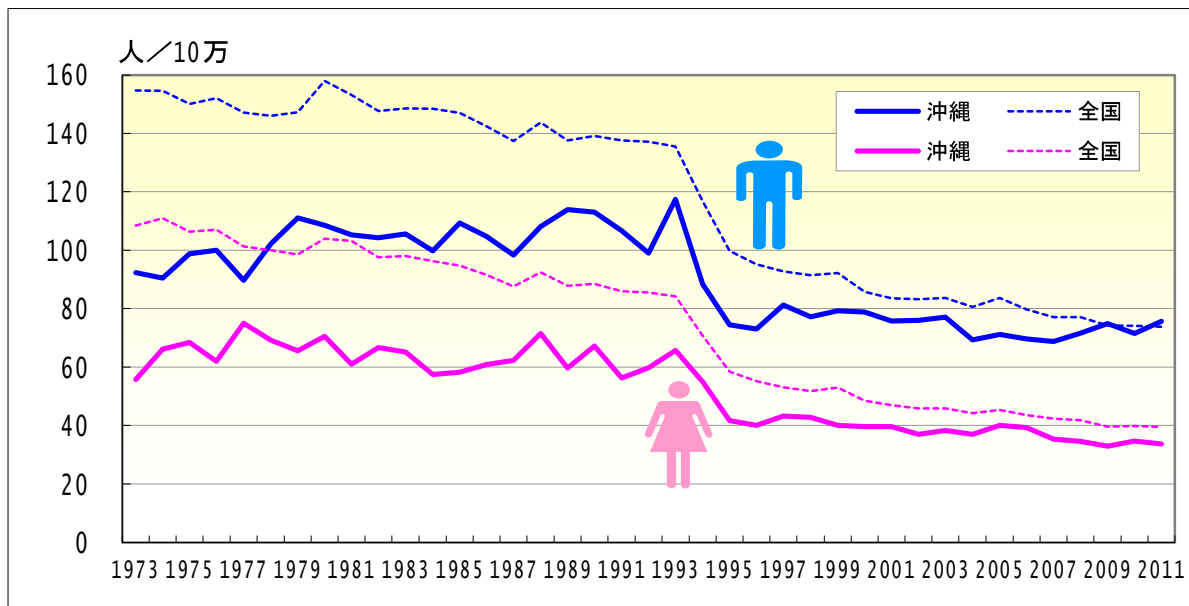


# 心疾患

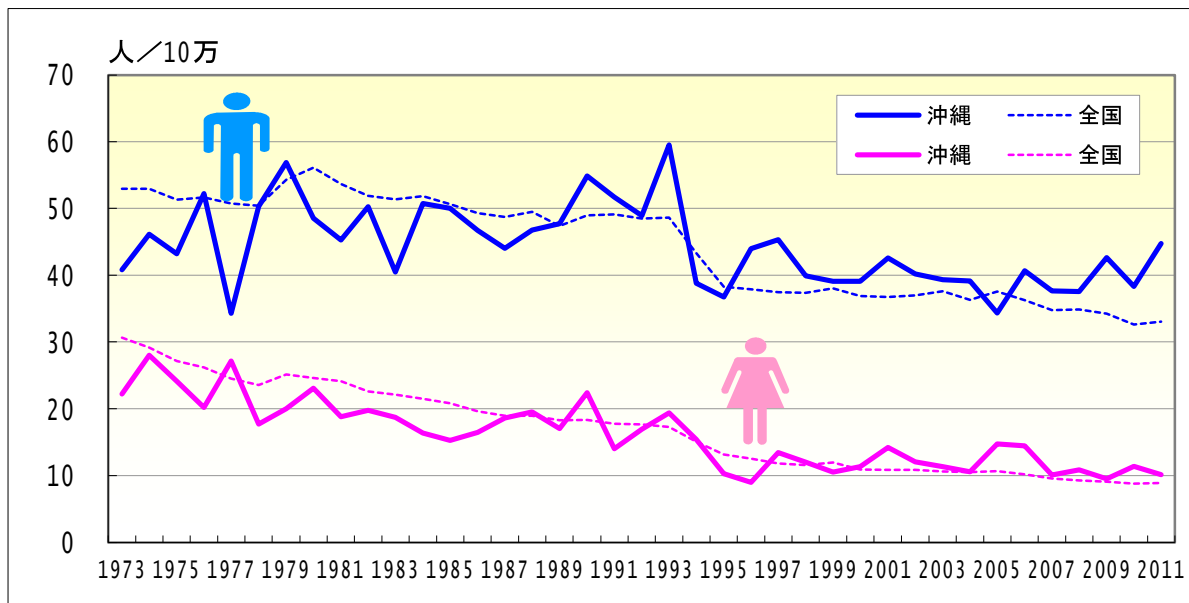
● 年齢調整死亡率の年次推移（沖縄、全国：1973-2011）



	男性				女性			
	粗死亡率		年齢調整死亡率		粗死亡率		年齢調整死亡率	
	沖縄	全国	沖縄	全国	沖縄	全国	沖縄	全国
1973	47.97	91.10	92.26	154.63	47.45	83.56	55.72	108.44
1974	49.13	92.47	90.49	154.51	57.40	87.19	66.13	110.88
1975	54.01	92.06	98.73	150.03	63.52	86.38	68.38	106.31
1976	55.65	95.15	100.00	152.00	59.78	89.27	61.98	106.94
1977	50.33	95.00	89.67	147.07	73.49	87.58	75.00	101.25
1978	59.36	96.93	102.11	146.04	72.46	89.67	69.25	100.00
1979	67.05	102.12	111.02	147.18	67.84	91.88	65.59	98.51
1980	66.42	112.04	108.47	157.99	74.57	100.47	70.46	103.93
1981	65.42	111.47	105.30	153.14	68.89	103.65	60.99	103.21
1982	67.15	111.21	104.22	147.62	77.97	102.29	66.73	97.49
1983	67.77	115.30	105.53	148.55	76.68	107.42	65.19	98.04
1984	66.98	118.31	99.70	148.38	72.36	109.63	57.53	96.25
1985	74.80	121.36	109.28	146.94	73.36	113.32	58.22	94.65
1986	74.26	121.20	104.61	142.38	80.39	114.63	60.87	91.59
1987	73.21	121.41	98.34	137.35	86.31	115.41	62.29	87.60
1988	83.01	131.06	108.06	143.76	103.42	127.74	71.51	92.42
1989	89.18	129.40	113.88	137.52	89.25	126.71	59.74	87.74
1990	91.76	135.66	113.06	139.09	101.07	133.98	67.24	88.54
1991	89.85	138.35	106.62	137.57	90.08	135.98	56.21	86.04
1992	85.82	142.48	98.98	137.08	100.50	141.78	59.78	85.45
1993	104.78	145.41	117.45	135.43	111.86	145.88	65.63	84.19
1994	80.39	129.63	88.42	116.68	97.44	127.65	54.99	70.66
1995	70.25	114.44	74.51	99.74	72.54	109.64	41.66	58.39
1996	70.68	112.86	72.98	95.06	73.90	108.90	40.01	55.15
1997	81.10	113.99	81.25	92.81	81.66	110.42	43.22	53.09
1998	79.07	116.02	77.23	91.41	84.00	112.58	42.81	51.71
1999	84.27	120.57	79.30	92.20	83.74	120.33	40.12	53.00
2000	85.67	117.35	78.85	85.81	83.94	116.31	39.55	48.51
2001	84.20	118.07	75.73	83.55	84.42	117.50	39.57	46.90
2002	88.57	121.75	76.06	83.15	84.59	120.36	37.00	45.85
2003	92.12	126.50	77.09	83.67	89.76	126.40	38.32	45.83
2004	84.89	125.76	69.29	80.57	89.03	127.22	36.92	44.18
2005	89.63	136.29	71.15	83.66	96.27	138.02	39.97	45.32
2006	89.84	134.50	69.70	79.73	100.30	139.58	39.31	43.52
2007	92.59	135.08	68.79	77.05	99.54	142.94	35.42	42.31
2008	99.92	140.24	71.64	77.09	99.37	148.00	34.50	41.75
2009	106.45	139.46	74.86	74.22	102.04	147.00	32.94	39.56
2010	106.00	144.23	71.56	74.20	104.69	155.16	34.68	39.75
2011	112.01	148.57	75.62	73.89	108.02	160.10	33.73	39.47

# 心疾患

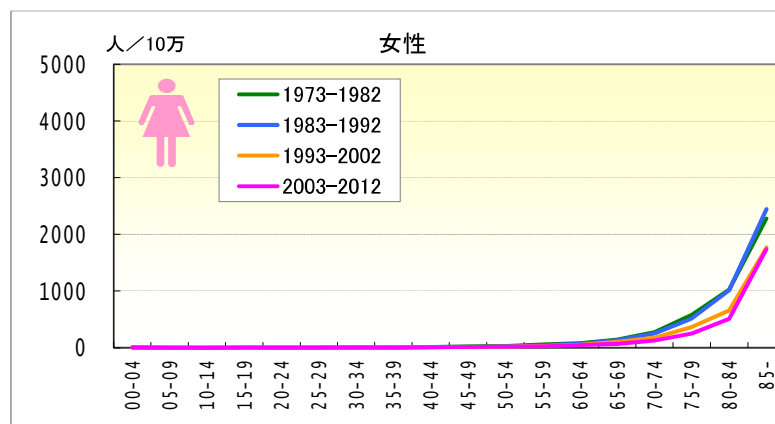
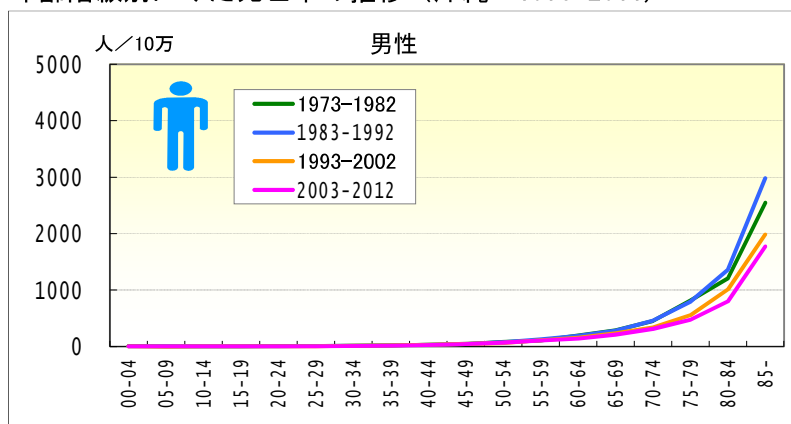
● 年齢調整死亡率（20-64歳）の年次推移（沖縄、全国：1973-2011）



	男性				女性			
	年齢調整死亡率		20-64年齢調整死亡率		年齢調整死亡率		20-64年齢調整死亡率	
	沖縄	全国	沖縄	全国	沖縄	全国	沖縄	全国
1973	92.26	154.63	40.83	52.91	55.72	108.44	22.23	30.63
1974	90.49	154.51	46.16	52.95	66.13	110.88	27.99	29.16
1975	98.73	150.03	43.20	51.33	68.38	106.31	24.13	27.15
1976	100.00	152.00	52.25	51.66	61.98	106.94	20.20	26.21
1977	89.67	147.07	34.30	50.75	75.00	101.25	27.17	24.52
1978	102.11	146.04	50.31	50.42	69.25	100.00	17.73	23.56
1979	111.02	147.18	56.86	54.30	65.59	98.51	20.03	25.14
1980	108.47	157.99	48.51	56.08	70.46	103.93	23.10	24.61
1981	105.30	153.14	45.27	53.65	60.99	103.21	18.84	24.13
1982	104.22	147.62	50.28	51.89	66.73	97.49	19.79	22.58
1983	105.53	148.55	40.48	51.38	65.19	98.04	18.71	22.13
1984	99.70	148.38	50.72	51.83	57.53	96.25	16.35	21.47
1985	109.28	146.94	50.03	50.66	58.22	94.65	15.26	20.84
1986	104.61	142.38	46.71	49.32	60.87	91.59	16.50	19.65
1987	98.34	137.35	44.01	48.73	62.29	87.60	18.65	18.98
1988	108.06	143.76	46.75	49.49	71.51	92.42	19.53	18.98
1989	113.88	137.52	47.70	47.40	59.74	87.74	17.02	18.29
1990	113.06	139.09	54.86	48.92	67.24	88.54	22.41	18.30
1991	106.62	137.57	51.68	49.10	56.21	86.04	14.02	17.75
1992	98.98	137.08	48.88	48.49	59.78	85.45	16.96	17.70
1993	117.45	135.43	59.53	48.62	65.63	84.19	19.38	17.26
1994	88.42	116.68	38.81	43.30	54.99	70.66	15.42	15.08
1995	74.51	99.74	36.73	38.24	41.66	58.39	10.30	13.13
1996	72.98	95.06	43.99	37.90	40.01	55.15	8.98	12.55
1997	81.25	92.81	45.32	37.48	43.22	53.09	13.46	11.81
1998	77.23	91.41	39.93	37.34	42.81	51.71	12.00	11.59
1999	79.30	92.20	39.09	38.02	40.12	53.00	10.53	11.93
2000	78.85	85.81	39.07	36.86	39.55	48.51	11.37	10.90
2001	75.73	83.55	42.58	36.76	39.57	46.90	14.18	10.86
2002	76.06	83.15	40.18	36.97	37.00	45.85	12.06	10.86
2003	77.09	83.67	39.33	37.60	38.32	45.83	11.34	10.61
2004	69.29	80.57	39.15	36.27	36.92	44.18	10.59	10.55
2005	71.15	83.66	34.38	37.58	39.97	45.32	14.74	10.66
2006	69.70	79.73	40.68	36.23	39.31	43.52	14.46	10.20
2007	68.79	77.05	37.66	34.79	35.42	42.31	10.08	9.56
2008	71.64	77.09	37.57	34.86	34.50	41.75	10.87	9.31
2009	74.86	74.22	42.60	34.21	32.94	39.56	9.51	9.04
2010	71.56	74.20	38.31	32.63	34.68	39.75	11.38	8.76
2011	75.62	73.89	44.78	33.05	33.73	39.47	10.13	8.89

# 心疾患

## ● 年齢階級別にみた死亡率の推移（沖縄：1973-2011）

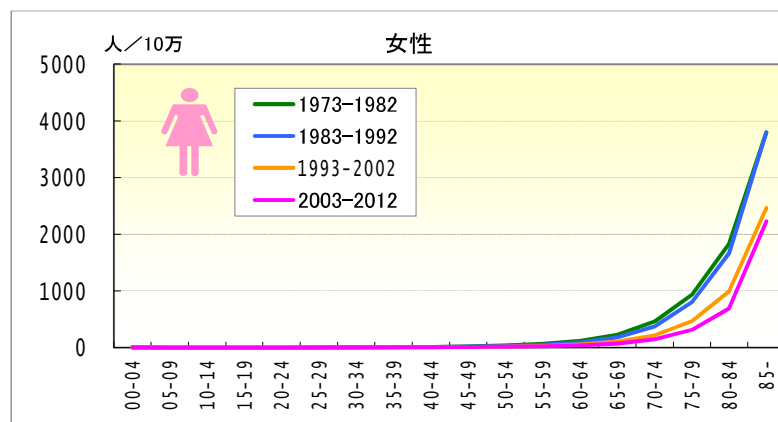
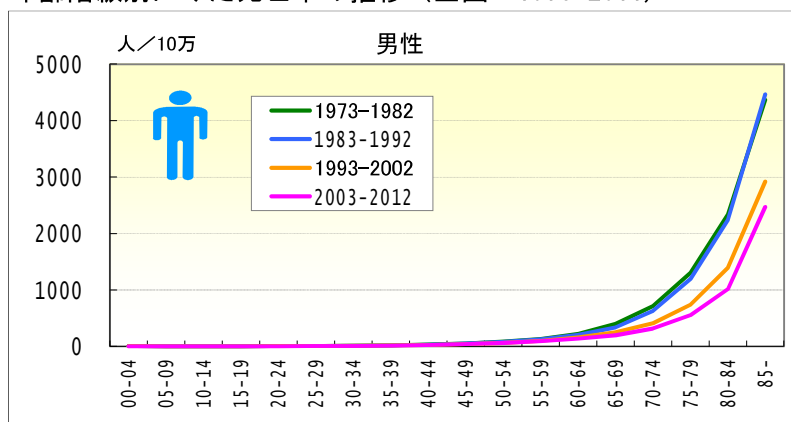


## ● 年齢階級別、性別\*期間別死亡率（沖縄：1973-2011年）

		総数	00-04	05-09	10-14	15-19	20-24	25-29	30-34	35-39	40-44	45-49	50-54	55-59	60-64	65-69	70-74	75-79	80-84	85-
男	1973-1977	51.45	5.60	0.38	2.91	5.04	5.64	8.42	17.78	21.84	27.76	34.30	67.20	96.18	181.14	290.73	458.45	733.20	1,119.84	2,248.21
	1978-1982	65.12	7.49	2.08	0.37	4.54	7.80	9.60	14.48	18.83	31.21	50.30	83.32	112.74	205.88	276.83	451.83	884.07	1,285.09	2,757.17
	1973-1982	58.51	6.51	1.26	1.65	4.80	6.66	9.05	15.88	20.36	29.52	43.30	76.60	105.22	194.25	283.29	454.86	814.99	1,208.33	2,546.74
	1983-1987	71.44	5.07	0.73	0.70	4.87	5.57	7.41	12.63	21.90	30.37	43.20	63.05	116.64	195.82	273.99	482.31	733.54	1,355.92	2,935.22
	1988-1992	87.93	5.02	1.92	1.48	4.19	5.56	7.61	11.89	18.69	33.43	45.58	87.84	141.56	179.32	282.21	442.91	850.34	1,361.35	3,018.68
	1983-1992	79.82	5.05	1.31	1.08	4.52	5.56	7.50	12.28	20.19	32.07	44.37	75.80	130.63	186.30	278.49	461.15	797.21	1,358.96	2,982.22
	1993-1997	81.35	5.88	0.41	0.78	3.16	7.38	5.66	12.38	17.68	31.46	49.01	63.91	120.70	165.67	249.34	355.20	580.29	1,077.00	2,145.27
	1998-2002	84.38	3.28	0.44	0.83	1.64	4.11	5.04	10.80	16.55	29.05	43.72	63.54	101.30	149.19	225.75	329.18	542.18	954.12	1,858.07
	1993-2002	82.89	4.60	0.43	0.80	2.41	5.79	5.33	11.58	17.13	30.30	46.16	63.70	111.12	157.10	235.98	340.11	559.24	1,010.36	1,983.85
	2003-2007	89.82	4.78	0.00	0.44	3.05	4.84	5.70	8.05	14.83	24.04	42.38	67.82	101.17	134.52	211.87	320.19	463.33	791.07	1,714.35
2008-2012	106.11	1.22	2.39	1.16	1.16	2.60	5.30	8.47	17.87	28.62	43.58	74.78	108.77	140.66	205.89	306.01	486.70	813.95	1,836.72	
2003-2012	97.14	3.21	1.04	0.75	2.24	3.88	5.53	8.23	16.27	26.09	42.90	70.81	104.88	137.61	209.29	313.52	475.27	803.03	1,773.85	
女	1973-1977	60.46	6.95	1.17	0.75	3.61	7.32	5.51	9.33	8.33	18.87	27.96	39.50	61.16	73.12	155.53	278.90	558.33	936.61	2,113.16
	1978-1982	72.38	8.23	0.73	4.20	1.71	2.49	3.42	3.87	3.54	14.87	25.78	24.07	53.15	81.68	131.41	269.13	597.22	1,094.68	2,398.68
	1973-1982	66.59	7.57	0.94	2.46	2.69	5.01	4.38	6.26	6.00	16.81	26.80	31.04	56.84	77.70	142.67	273.68	579.94	1,022.56	2,277.12
	1983-1987	77.87	5.73	0.00	0.36	4.19	4.53	3.54	4.54	7.73	8.35	15.57	23.61	42.32	73.88	124.77	255.35	537.06	990.91	2,306.80
	1988-1992	96.85	5.73	0.81	1.54	1.17	1.46	7.04	5.65	9.91	14.20	17.54	24.46	40.17	66.98	135.27	249.94	494.65	1,032.95	2,549.80
	1983-1992	87.57	5.73	0.39	0.93	2.63	2.97	5.24	5.08	8.91	11.56	16.53	24.05	41.17	70.13	130.43	252.45	514.23	1,013.86	2,446.62
	1993-1997	87.36	3.82	1.30	0.81	0.82	2.16	0.91	4.09	7.80	9.63	11.40	18.92	31.75	57.30	113.16	207.31	417.46	741.56	1,929.77
	1998-2002	84.14	3.47	0.00	0.87	0.43	2.31	1.65	3.07	6.28	9.12	13.50	15.57	24.07	52.11	90.89	153.45	322.94	586.15	1,646.94
	1993-2002	85.72	3.65	0.67	0.84	0.63	2.23	1.30	3.57	7.05	9.38	12.54	17.08	28.01	54.61	101.26	177.93	366.37	657.62	1,771.56
	2003-2007	95.02	4.53	0.49	0.47	1.37	1.45	1.29	3.56	2.58	5.83	13.08	18.72	33.71	52.72	78.59	138.29	285.51	541.73	1,669.35
2008-2012	103.55	3.79	1.26	0.00	0.61	1.30	1.13	2.60	5.31	9.26	11.31	19.69	21.05	37.92	58.80	110.91	216.74	477.17	1,804.54	
2003-2012	98.86	4.20	0.82	0.26	1.04	1.38	1.22	3.14	3.87	7.38	12.31	19.15	27.52	45.45	70.17	125.51	252.60	510.00	1,734.55	

# 心疾患

## ● 年齢階級別にみた死亡率の推移 (全国：1973-2011)



## ● 年齢階級別、性別\*期間別死亡率 (全国：1973-2011年)

		総数	00-04	05-09	10-14	15-19	20-24	25-29	30-34	35-39	40-44	45-49	50-54	55-59	60-64	65-69	70-74	75-79	80-84	85-
男	1973-1977	93.18	4.90	0.92	1.40	3.55	5.96	8.06	12.97	20.52	32.98	49.42	75.52	129.77	223.54	402.32	717.43	1,299.80	2,362.06	4,453.89
	1978-1982	106.81	5.13	1.08	1.52	3.90	5.87	8.67	11.90	18.93	32.42	54.15	83.15	130.14	228.26	389.03	709.56	1,307.13	2,325.55	4,304.58
	1973-1982	100.16	5.00	1.01	1.46	3.73	5.92	8.34	12.39	19.70	32.70	51.92	79.88	129.98	225.92	395.33	713.20	1,303.83	2,341.01	4,366.40
	1983-1987	119.53	5.29	1.07	1.55	3.51	5.74	8.59	11.95	18.21	30.63	50.10	82.32	129.41	201.50	356.34	650.64	1,239.44	2,301.81	4,379.74
	1988-1992	135.40	5.78	0.97	1.41	3.25	5.51	8.52	11.88	18.06	28.73	47.88	76.45	125.60	199.73	320.60	607.32	1,154.87	2,195.96	4,526.18
	1983-1992	127.55	5.52	1.03	1.48	3.38	5.62	8.55	11.92	18.14	29.60	48.95	79.33	127.40	200.48	336.47	628.53	1,193.72	2,242.78	4,465.00
	1993-1997	123.24	4.55	0.84	1.36	2.97	4.49	6.62	9.88	15.46	24.66	40.55	65.63	103.30	170.08	270.87	451.83	866.04	1,595.63	3,342.02
	1998-2002	118.75	3.83	0.76	1.03	2.43	4.16	6.09	9.35	14.80	23.40	39.02	61.03	92.90	144.98	230.45	374.76	637.86	1,210.52	2,606.15
	1993-2002	120.99	4.19	0.80	1.20	2.72	4.34	6.34	9.60	15.13	24.08	39.84	63.15	97.91	157.22	249.45	407.56	737.11	1,393.09	2,918.89
	2003-2007	131.63	3.27	0.57	0.85	2.23	3.82	5.57	8.81	13.95	23.95	38.54	61.98	92.26	138.96	206.78	337.31	583.23	1,041.42	2,518.32
	2008-2012	143.12	2.59	0.62	0.60	1.70	3.02	4.46	7.33	11.83	21.64	35.42	57.87	88.73	128.99	189.58	294.48	528.55	990.07	2,424.77
2003-2012	136.73	2.98	0.59	0.74	2.01	3.49	5.11	8.20	12.96	22.87	37.14	60.30	90.78	134.14	198.79	317.59	557.10	1,014.77	2,471.11	
女	1973-1977	86.82	4.20	0.67	1.09	1.94	3.21	4.31	6.22	9.71	15.55	25.62	41.17	67.97	124.41	238.50	476.99	948.22	1,873.39	3,885.43
	1978-1982	97.65	4.33	0.85	1.17	1.89	2.28	3.93	5.00	7.71	13.20	21.52	35.14	59.72	113.94	218.77	449.91	923.64	1,799.55	3,728.78
	1973-1982	92.36	4.26	0.76	1.13	1.91	2.78	4.14	5.57	8.68	14.36	23.47	37.95	63.47	118.96	227.83	462.18	934.63	1,830.97	3,795.46
	1983-1987	112.11	4.80	0.82	1.09	1.86	2.63	3.79	4.78	6.58	11.13	18.58	29.87	51.09	95.84	193.89	398.59	843.67	1,715.01	3,713.18
	1988-1992	133.26	4.65	0.98	0.97	1.75	2.21	3.69	4.69	6.38	10.06	16.09	26.61	44.91	82.86	163.75	351.51	771.28	1,630.22	3,857.08
	1983-1992	122.80	4.73	0.89	1.04	1.81	2.41	3.74	4.74	6.49	10.55	17.30	28.21	47.86	88.88	177.40	373.88	803.73	1,666.91	3,798.20
	1993-1997	120.45	4.28	0.69	0.94	1.35	1.56	2.16	3.63	4.89	7.86	13.11	19.81	34.08	64.53	121.00	252.25	554.25	1,149.33	2,766.87
	1998-2002	117.42	3.45	0.51	0.73	1.14	1.28	1.87	2.99	4.30	6.53	11.31	16.85	26.85	48.95	95.58	185.88	397.35	860.11	2,251.90
	1993-2002	118.93	3.87	0.60	0.84	1.26	1.43	2.01	3.30	4.59	7.24	12.28	18.22	30.34	56.58	107.65	216.47	467.26	994.08	2,463.70
	2003-2007	134.84	3.17	0.48	0.64	1.02	1.36	1.68	2.65	4.47	6.47	10.15	16.03	25.84	41.37	77.73	161.38	335.24	729.70	2,236.12
	2008-2012	152.56	2.24	0.54	0.43	0.66	1.16	1.31	2.20	3.86	6.22	9.39	13.92	22.52	35.04	66.67	133.80	291.08	650.07	2,215.78
2003-2012	142.73	2.77	0.50	0.55	0.87	1.28	1.52	2.46	4.18	6.36	9.81	15.17	24.45	38.35	72.64	148.78	314.42	690.81	2,225.83	