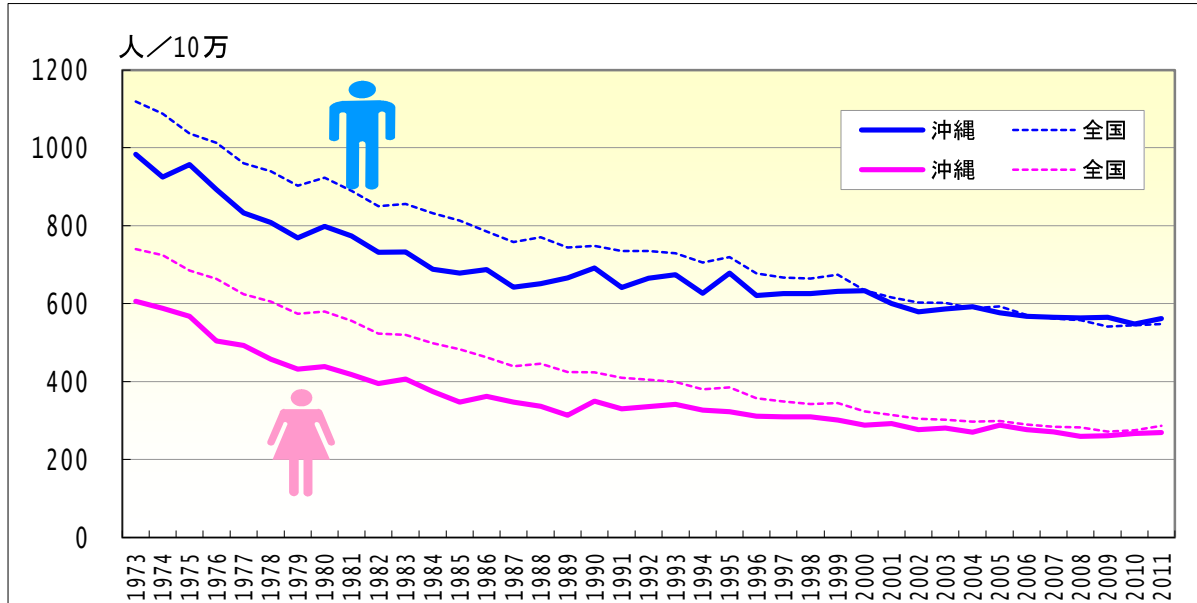


全死因

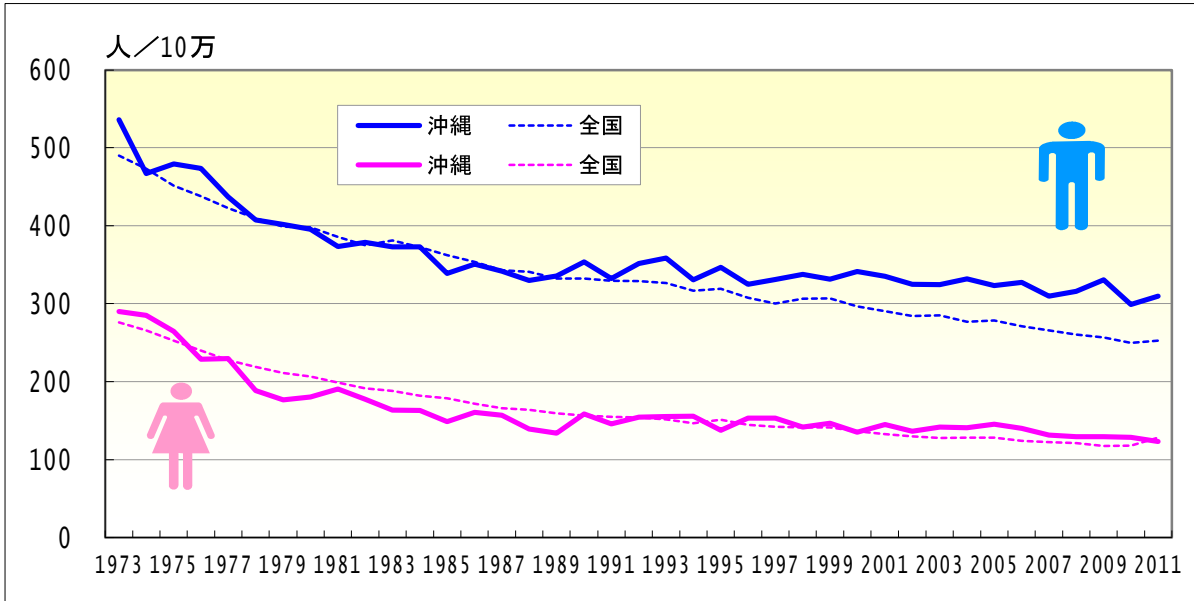
● 年齢調整死亡率の年次推移（沖縄、全国：1973-2011）



	男性				女性			
	粗死亡率		年齢調整死亡率		粗死亡率		年齢調整死亡率	
	沖縄	全国	沖縄	全国	沖縄	全国	沖縄	全国
1973	567.77	723.18	983.34	1118.53	526.43	591.46	606.55	740.04
1974	537.67	710.82	924.79	1087.70	522.74	589.54	588.08	724.34
1975	570.84	689.71	957.07	1036.47	523.68	573.88	567.19	685.05
1976	541.48	683.71	892.38	1012.53	476.78	568.61	504.29	664.02
1977	515.93	665.78	833.10	959.89	478.23	551.41	492.77	624.21
1978	502.04	665.95	808.11	939.85	457.39	550.59	456.83	604.79
1979	489.05	656.09	769.46	902.50	442.97	539.71	431.87	574.40
1980	510.23	682.45	797.98	923.45	462.07	561.76	438.58	579.78
1981	504.98	673.50	773.84	889.18	450.70	556.89	418.20	556.01
1982	492.88	663.53	732.04	849.64	435.43	544.29	395.17	523.39
1983	501.30	686.05	732.71	855.29	465.57	561.34	405.99	519.91
1984	479.83	683.60	687.88	831.67	441.32	556.50	374.61	498.40
1985	480.11	689.30	678.75	812.94	418.14	562.99	347.11	482.92
1986	503.55	683.82	687.15	784.97	448.03	558.66	361.93	461.67
1987	490.16	682.50	642.27	758.22	445.72	554.90	346.78	439.13
1988	506.88	713.20	651.50	770.76	454.91	587.89	336.15	445.89
1989	533.21	709.17	666.08	744.30	430.85	580.22	313.45	424.42
1990	571.53	735.84	691.54	747.85	492.63	602.69	349.18	422.96
1991	542.41	744.72	640.71	735.46	479.62	605.30	329.59	410.07
1992	577.14	767.46	665.23	735.15	501.53	621.81	335.36	404.48
1993	602.14	784.56	673.80	728.97	526.25	620.06	341.95	398.85
1994	573.30	782.52	627.22	705.72	515.31	632.38	326.60	380.31
1995	634.35	822.85	678.97	719.63	518.64	664.03	322.90	384.73
1996	601.72	799.48	620.70	677.38	504.19	640.83	310.71	357.22
1997	624.02	813.26	626.36	667.19	527.41	651.78	309.46	348.41
1998	642.83	835.30	626.10	664.74	541.05	663.51	309.12	342.20
1999	663.39	871.57	631.34	673.67	548.77	697.88	301.62	344.76
2000	680.24	855.29	632.82	634.22	534.06	679.38	288.03	323.89
2001	668.50	858.46	600.43	615.95	565.31	686.44	291.80	313.89
2002	664.73	869.13	578.57	602.31	547.05	693.87	276.45	304.89
2003	694.50	894.43	585.61	601.62	568.69	717.77	280.25	302.48
2004	716.49	903.53	592.38	588.31	565.53	729.95	270.38	297.06
2005	718.65	948.47	576.64	593.17	615.05	772.16	287.95	298.59
2006	726.07	943.59	567.26	571.26	616.51	778.22	276.40	289.40
2007	752.81	963.01	564.41	561.91	624.85	796.98	271.02	284.57
2008	771.45	990.28	563.01	557.45	614.24	824.47	259.01	282.72
2009	793.92	992.91	565.05	541.02	647.99	822.70	260.48	272.00
2010	797.37	1029.21	547.32	544.25	671.51	869.17	267.00	274.94
2011	838.60	1068.36	561.77	547.61	700.32	921.60	269.06	286.40

全死因

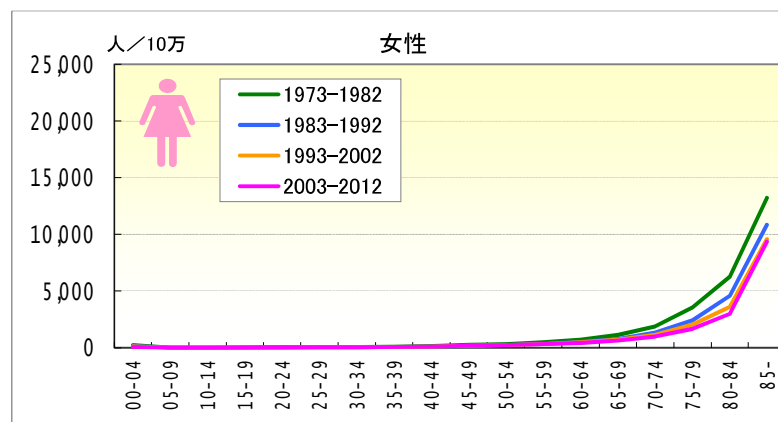
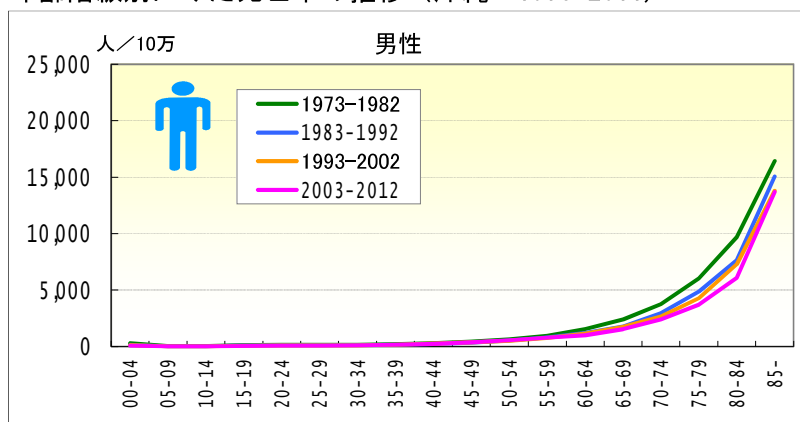
● 年齢調整死亡率（20-64歳）の年次推移（沖縄、全国：1973-2011）



	男性				女性			
	年齢調整死亡率		20-64年齢調整死亡率		年齢調整死亡率		20-64年齢調整死亡率	
	沖縄	全国	沖縄	全国	沖縄	全国	沖縄	全国
1973	983.34	1118.53	536.11	490.03	606.55	740.04	290.05	276.27
1974	924.79	1087.70	467.34	473.21	588.08	724.34	284.79	265.58
1975	957.07	1036.47	479.35	451.26	567.19	685.05	264.29	252.72
1976	892.38	1012.53	473.28	438.02	504.29	664.02	228.64	239.67
1977	833.10	959.89	437.08	422.59	492.77	624.21	229.54	227.36
1978	808.11	939.85	407.48	409.42	456.83	604.79	188.57	218.77
1979	769.46	902.50	401.94	398.93	431.87	574.40	176.38	210.91
1980	797.98	923.45	395.65	397.95	438.58	579.78	180.47	206.49
1981	773.84	889.18	373.26	385.85	418.20	556.01	190.64	198.77
1982	732.04	849.64	378.69	375.21	395.17	523.39	177.70	191.52
1983	732.71	855.29	373.00	381.25	405.99	519.91	163.32	188.37
1984	687.88	831.67	373.01	372.66	374.61	498.40	163.02	182.04
1985	678.75	812.94	338.61	362.25	347.11	482.92	148.52	178.70
1986	687.15	784.97	350.87	353.77	361.93	461.67	160.79	171.60
1987	642.27	758.22	341.71	343.17	346.78	439.13	156.76	165.88
1988	651.50	770.76	329.69	341.01	336.15	445.89	138.91	163.85
1989	666.08	744.30	335.44	332.38	313.45	424.42	133.97	159.71
1990	691.54	747.85	353.76	332.51	349.18	422.96	158.16	156.45
1991	640.71	735.46	332.39	329.32	329.59	410.07	145.84	154.81
1992	665.23	735.15	351.61	328.81	335.36	404.48	154.55	153.96
1993	673.80	728.97	358.56	326.46	341.95	398.85	155.08	151.49
1994	627.22	705.72	330.90	316.49	326.60	380.31	155.40	146.72
1995	678.97	719.63	346.66	319.17	322.90	384.73	137.62	151.35
1996	620.70	677.38	324.88	307.82	310.71	357.22	153.33	144.42
1997	626.36	667.19	331.25	300.09	309.46	348.41	153.11	142.22
1998	626.10	664.74	337.42	306.33	309.12	342.20	141.97	141.51
1999	631.34	673.67	331.64	307.03	301.62	344.76	146.52	141.04
2000	632.82	634.22	341.27	296.81	288.03	323.89	135.12	136.54
2001	600.43	615.95	335.09	290.35	291.80	313.89	145.14	132.92
2002	578.57	602.31	324.87	283.97	276.45	304.89	136.24	129.80
2003	585.61	601.62	324.55	285.31	280.25	302.48	141.66	127.66
2004	592.38	588.31	332.05	277.19	270.38	297.06	140.85	128.28
2005	576.64	593.17	323.26	278.42	287.95	298.59	145.25	128.17
2006	567.26	571.26	327.38	271.15	276.40	289.40	139.87	124.27
2007	564.41	561.91	309.47	265.55	271.02	284.57	131.32	122.37
2008	563.01	557.45	315.78	260.36	259.01	282.72	129.15	120.84
2009	565.05	541.02	330.70	256.59	260.48	272.00	129.10	117.54
2010	547.32	544.25	298.84	249.92	267.00	274.94	128.44	118.02
2011	561.77	547.61	309.58	252.62	269.06	286.40	123.06	128.26

全死因

● 年齢階級別にみた死亡率の推移（沖縄：1973-2011）

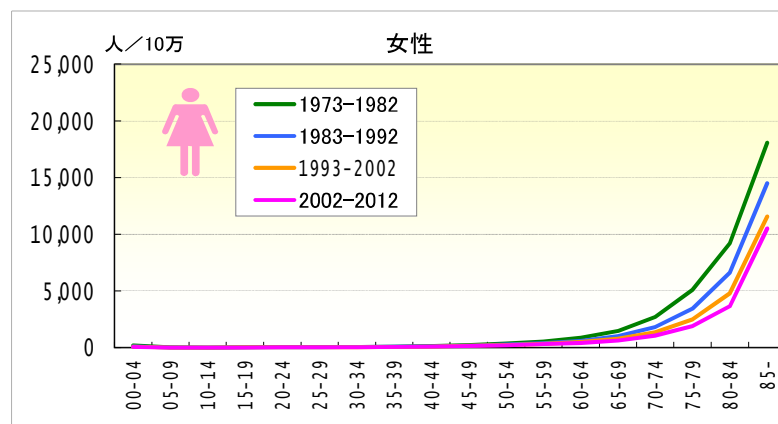
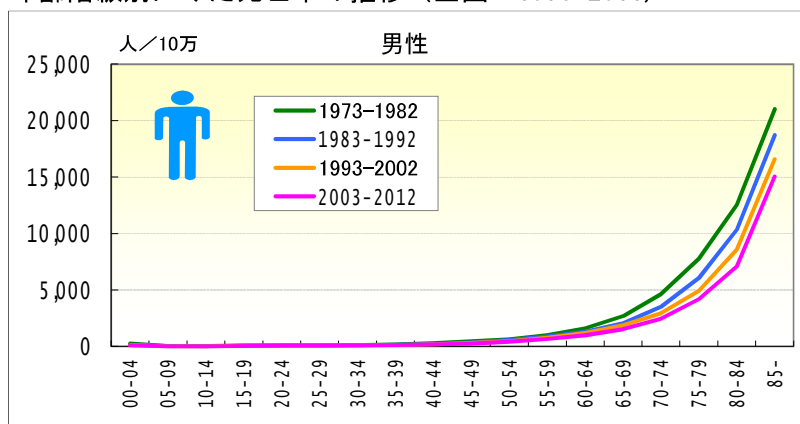


● 年齢階級別、性別*期間別死亡率（沖縄：1973-2011年）

		総数	00-04	05-09	10-14	15-19	20-24	25-29	30-34	35-39	40-44	45-49	50-54	55-59	60-64	65-69	70-74	75-79	80-84	85-
男	1973-1977	546.48	366.30	43.51	41.08	112.92	176.07	150.56	182.04	213.45	320.44	455.27	705.65	1,030.89	1,730.36	2,604.51	4,210.67	6,476.58	10,044.38	17,647.82
	1978-1982	499.82	220.23	35.02	27.99	118.05	120.49	131.21	134.36	179.12	255.78	402.36	599.29	877.14	1,362.19	2,221.56	3,387.61	5,651.87	9,398.32	15,544.56
	1973-1982	522.39	295.75	39.10	34.58	115.40	149.91	140.13	154.61	196.67	287.51	425.50	643.64	946.98	1,535.30	2,399.55	3,763.47	6,029.47	9,698.39	16,414.14
	1983-1987	490.97	181.11	24.87	19.52	106.00	109.35	111.56	131.67	145.28	237.77	372.29	543.14	788.35	1,259.84	1,831.13	3,089.89	4,891.23	7,537.15	14,983.58
	1988-1992	546.42	146.48	26.12	22.15	88.72	113.16	114.17	109.95	166.64	228.03	333.30	500.49	818.97	1,159.94	1,712.18	2,843.44	4,838.04	7,735.83	15,115.06
	1983-1992	519.14	164.40	25.48	20.80	97.08	111.26	112.77	121.37	156.70	232.36	353.19	521.20	805.54	1,202.24	1,766.05	2,957.55	4,862.23	7,648.40	15,057.63
	1993-1997	607.22	138.05	18.60	19.52	82.05	91.12	90.54	106.79	162.49	246.95	335.14	513.75	778.18	1,203.96	1,790.60	2,715.74	4,434.78	7,589.22	14,458.56
	1998-2002	664.01	121.37	14.20	14.86	59.41	78.15	88.21	113.35	167.32	270.30	397.09	509.24	719.04	1,094.48	1,709.75	2,610.13	4,157.78	7,047.22	13,287.80
	1993-2002	636.14	129.85	16.48	17.26	70.94	84.80	89.30	110.10	164.83	258.23	368.60	511.21	748.97	1,147.02	1,744.83	2,654.49	4,281.78	7,295.30	13,800.53
	2003-2007	721.84	74.06	14.76	11.98	37.46	63.35	83.35	107.91	159.69	245.26	378.42	577.45	727.47	971.78	1,570.81	2,519.55	3,719.64	6,358.53	13,370.33
2008-2012	800.44	72.37	14.33	10.99	44.78	59.18	73.64	90.53	142.93	218.50	345.29	518.66	818.27	995.74	1,510.74	2,256.58	3,686.00	5,857.71	14,002.53	
2003-2012	757.17	73.32	14.57	11.55	40.60	61.57	79.20	100.40	151.73	233.30	364.13	552.13	771.86	983.85	1,544.91	2,395.80	3,702.45	6,096.73	13,677.73	
女	1973-1977	505.23	272.18	26.03	28.08	51.37	91.51	84.60	99.50	126.55	191.18	295.67	391.57	536.39	829.80	1,246.93	2,133.84	4,082.82	7,024.59	14,024.09
	1978-1982	449.62	168.55	17.08	20.61	29.46	43.35	53.80	71.64	81.37	130.40	212.36	271.11	400.35	628.25	1,001.12	1,673.79	3,140.52	5,681.08	12,640.23
	1973-1982	476.61	222.15	21.40	24.38	40.76	68.45	67.98	83.84	104.64	159.84	251.31	325.54	463.05	721.96	1,115.88	1,888.10	3,559.24	6,294.07	13,229.38
	1983-1987	443.67	162.13	15.75	11.24	29.77	37.71	47.39	56.92	82.17	107.36	156.90	249.15	358.65	550.17	831.80	1,402.53	2,598.41	4,810.15	11,231.13
	1988-1992	472.13	131.68	12.51	10.39	24.19	31.19	40.81	56.06	74.76	113.57	148.77	234.72	327.02	485.64	726.20	1,269.25	2,272.70	4,394.18	10,569.86
	1983-1992	458.22	147.46	14.17	10.83	26.88	34.40	44.19	56.50	78.18	110.77	152.93	241.70	341.78	515.06	774.90	1,331.03	2,423.10	4,583.06	10,850.65
	1993-1997	518.35	122.14	11.73	9.35	22.89	25.49	32.31	59.58	77.09	113.10	189.92	247.83	318.13	489.61	705.01	1,261.46	2,176.40	3,947.17	9,866.17
	1998-2002	547.29	103.04	8.86	7.79	18.40	27.20	36.67	53.51	71.33	106.86	174.25	235.53	287.63	453.02	706.36	1,078.01	1,944.62	3,307.76	9,364.78
	1993-2002	533.06	112.77	10.35	8.60	20.69	26.32	34.60	56.49	74.26	110.04	181.45	241.08	303.25	470.65	705.73	1,161.39	2,051.11	3,601.82	9,585.69
	2003-2007	598.31	57.85	10.21	7.01	12.76	26.04	31.82	53.75	68.04	85.17	180.02	230.17	313.41	456.48	650.45	1,027.42	1,752.66	3,076.16	9,133.63
2008-2012	658.68	63.80	13.22	7.31	14.63	20.78	35.10	42.05	74.75	90.47	157.24	220.44	288.34	374.69	589.67	972.79	1,573.83	2,899.98	9,621.93	
2003-2012	625.47	60.49	11.53	7.14	13.56	23.80	33.24	48.69	71.21	87.56	170.10	225.91	301.15	416.31	624.59	1,001.91	1,667.09	2,989.56	9,369.14	

全死因

● 年齢階級別にみた死亡率の推移 (全国：1973-2011)



● 年齢階級別、性別*期間別死亡率 (全国：1973-2011年)

		総数	00-04	05-09	10-14	15-19	20-24	25-29	30-34	35-39	40-44	45-49	50-54	55-59	60-64	65-69	70-74	75-79	80-84	85-
男	1973-1977	694.25	299.94	43.76	29.95	86.95	108.31	105.90	131.52	197.09	315.96	459.27	657.78	1,069.82	1,748.50	2,952.84	5,046.93	8,327.96	13,502.00	22,318.09
	1978-1982	668.32	215.29	34.02	23.04	74.63	86.72	89.88	104.45	155.50	253.86	428.84	626.04	916.99	1,483.35	2,480.07	4,259.18	7,318.52	11,826.13	20,107.22
	1973-1982	680.97	260.63	38.68	26.30	80.71	98.27	98.45	116.91	175.62	284.49	443.22	639.66	985.33	1,615.01	2,704.04	4,623.96	7,772.67	12,535.81	21,022.63
	1983-1987	685.05	163.12	25.90	19.95	67.88	81.39	81.72	96.42	135.69	224.55	367.65	618.74	904.10	1,308.39	2,153.23	3,653.66	6,368.69	10,824.22	18,868.86
	1988-1992	734.15	133.94	22.19	17.30	62.61	76.92	73.69	82.87	121.46	188.99	315.33	513.26	869.25	1,310.81	1,964.36	3,340.83	5,767.93	9,971.69	18,623.77
	1983-1992	709.84	149.47	24.17	18.72	65.14	79.04	77.66	90.17	129.09	205.39	340.61	565.13	885.72	1,309.78	2,048.22	3,493.95	6,043.92	10,348.78	18,726.15
	1993-1997	800.56	123.62	19.28	16.79	53.73	69.03	69.31	80.32	113.08	182.51	296.51	487.17	770.57	1,289.55	1,963.58	3,054.09	5,328.48	9,108.48	17,554.92
	1998-2002	857.96	97.66	15.01	14.11	46.67	66.03	68.60	84.09	116.60	178.45	298.75	474.03	735.11	1,119.78	1,814.28	2,866.22	4,602.49	8,086.63	15,861.64
	1993-2002	829.38	110.76	17.24	15.54	50.44	67.63	68.94	82.30	114.86	180.63	297.55	480.08	752.20	1,202.61	1,884.46	2,946.17	4,918.27	8,571.07	16,581.26
	2003-2007	930.59	79.37	12.07	11.61	37.37	59.46	67.09	80.93	110.36	170.73	273.13	445.49	675.29	1,028.10	1,555.83	2,585.81	4,312.73	7,156.95	15,234.09
2008-2012	1,020.21	70.94	11.13	11.62	33.37	60.27	65.42	76.94	102.46	155.50	244.32	395.40	639.87	954.08	1,462.90	2,306.15	4,015.27	7,003.34	14,896.48	
2003-2012	970.37	75.72	11.67	11.62	35.67	59.80	66.40	79.28	106.67	163.61	260.21	424.99	660.52	992.33	1,512.69	2,457.06	4,170.58	7,077.23	15,063.71	
女	1973-1977	574.75	232.75	28.09	19.15	33.66	54.83	61.79	79.43	110.13	164.78	252.20	385.79	591.49	953.60	1,639.78	3,029.33	5,609.88	10,191.73	19,468.30
	1978-1982	550.65	169.57	20.26	14.45	27.06	37.99	49.37	62.41	90.07	134.50	210.86	320.35	479.41	776.22	1,322.99	2,431.99	4,645.68	8,483.43	17,015.30
	1973-1982	562.42	203.39	24.01	16.68	30.33	47.07	56.04	70.31	99.78	149.38	230.55	350.81	530.42	861.36	1,468.40	2,702.54	5,076.71	9,210.41	18,059.39
	1983-1987	558.87	133.36	16.17	12.49	23.93	33.95	41.68	54.90	77.29	121.00	184.72	283.11	412.47	650.58	1,098.27	1,976.55	3,748.83	7,198.63	15,102.76
	1988-1992	599.64	111.63	14.82	11.69	23.21	29.84	35.60	46.05	70.69	106.84	165.23	252.52	376.19	573.14	937.43	1,680.89	3,191.35	6,188.51	14,089.98
	1983-1992	579.48	123.21	15.54	12.12	23.56	31.79	38.62	50.83	74.23	113.42	174.65	267.55	393.48	609.03	1,010.23	1,821.40	3,441.24	6,625.60	14,504.42
	1993-1997	641.85	103.14	13.86	10.93	20.89	27.84	31.21	44.56	62.65	102.30	158.70	238.06	343.88	535.43	844.03	1,453.61	2,750.89	5,258.35	12,448.11
	1998-2002	684.23	83.42	11.08	9.15	19.75	28.05	31.92	43.35	60.75	93.40	151.00	226.00	318.50	468.25	750.60	1,248.28	2,269.94	4,384.16	10,942.97
	1993-2002	663.17	93.36	12.53	10.10	20.36	27.94	31.58	43.92	61.69	98.20	155.13	231.59	330.75	501.13	794.98	1,342.92	2,484.26	4,789.08	11,562.00
	2003-2007	759.04	68.70	8.88	7.96	18.57	28.16	32.25	41.19	59.67	85.75	134.71	212.06	307.23	407.19	652.33	1,113.93	1,970.35	3,782.77	10,522.73
2008-2012	859.48	62.98	9.59	7.65	17.88	28.82	32.89	42.31	59.59	85.42	130.42	193.79	291.32	388.72	605.39	1,002.40	1,812.64	3,498.27	10,489.23	
2002-2012	803.74	66.23	9.19	7.82	18.28	28.44	32.51	41.65	59.63	85.60	132.79	204.58	300.55	398.39	630.73	1,062.98	1,896.00	3,643.81	10,505.79	