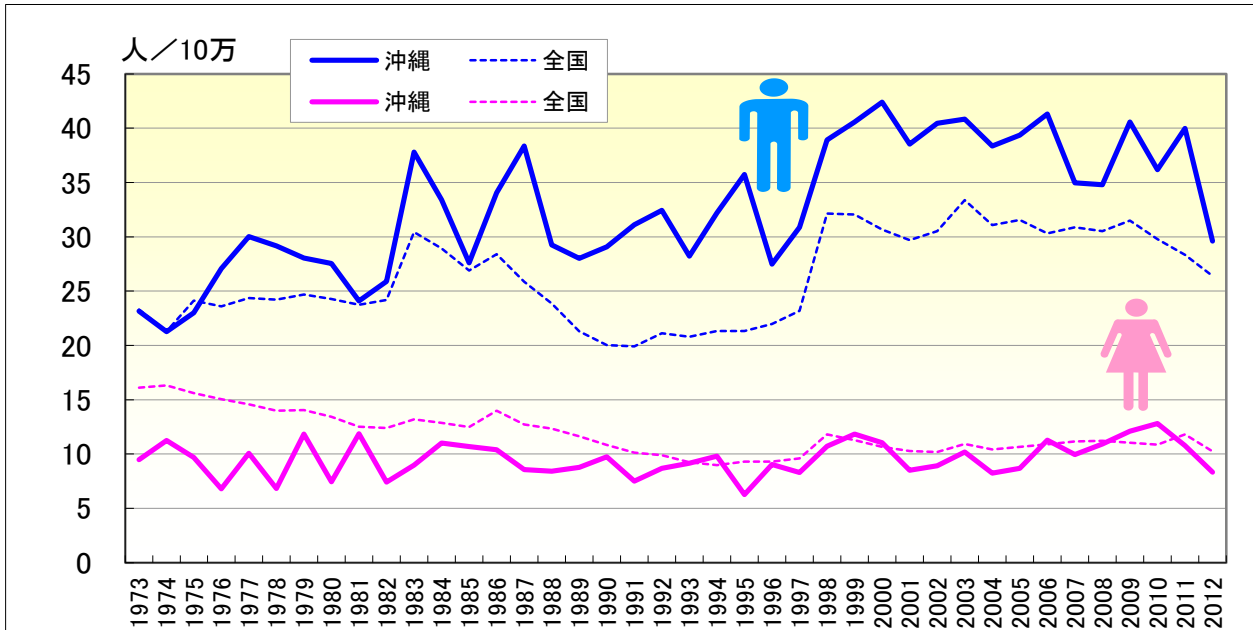


# 自殺

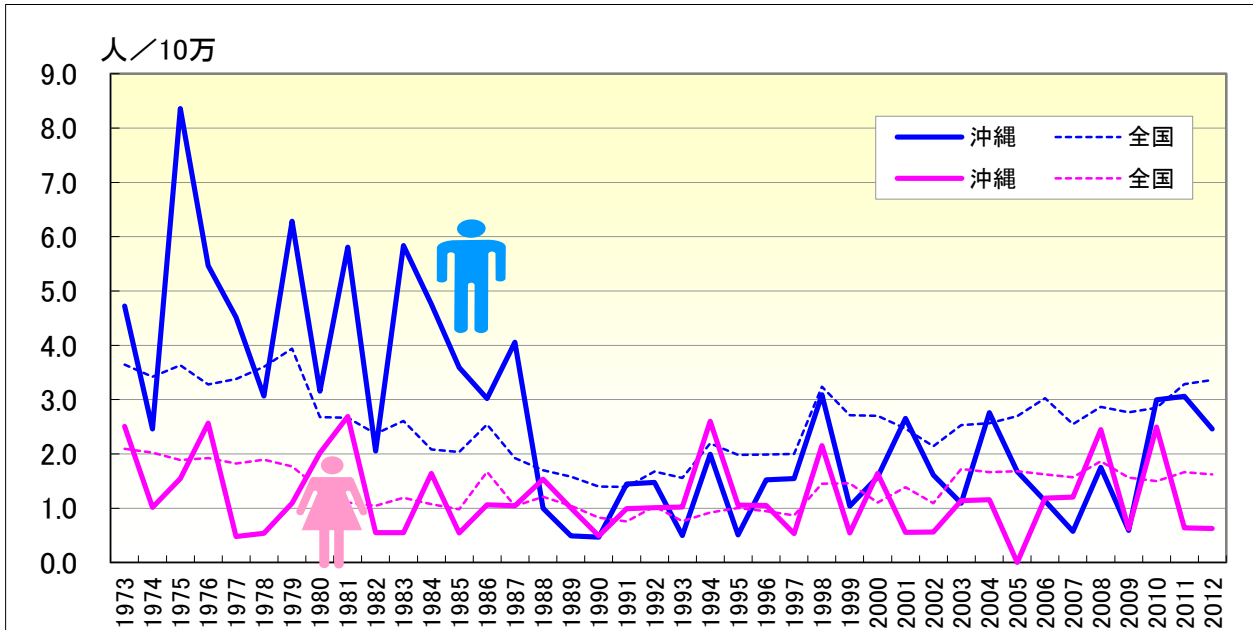
## ● 年齢調整死亡率の年次推移（沖縄、全国：1973-2012）



|      | 男性    |       |         |       | 女性    |       |         |       |
|------|-------|-------|---------|-------|-------|-------|---------|-------|
|      | 粗死亡率  |       | 年齢調整死亡率 |       | 粗死亡率  |       | 年齢調整死亡率 |       |
|      | 沖縄    | 全国    | 沖縄      | 全国    | 沖縄    | 全国    | 沖縄      | 全国    |
| 1973 | 19.23 | 20.25 | 23.15   | 23.29 | 8.33  | 14.76 | 9.48    | 16.12 |
| 1974 | 16.98 | 18.11 | 21.27   | 21.29 | 9.38  | 15.04 | 11.26   | 16.31 |
| 1975 | 20.50 | 21.46 | 23.00   | 24.14 | 8.32  | 14.56 | 9.68    | 15.61 |
| 1976 | 23.93 | 21.22 | 23.07   | 23.59 | 6.35  | 14.09 | 6.80    | 15.06 |
| 1977 | 25.93 | 22.01 | 30.02   | 24.36 | 8.86  | 13.83 | 10.07   | 14.58 |
| 1978 | 24.09 | 22.02 | 29.16   | 24.21 | 5.84  | 13.40 | 6.84    | 13.98 |
| 1979 | 25.10 | 22.61 | 28.05   | 24.69 | 10.47 | 13.60 | 11.84   | 14.05 |
| 1980 | 23.13 | 22.32 | 27.55   | 24.26 | 6.78  | 13.15 | 7.45    | 13.43 |
| 1981 | 21.32 | 22.04 | 24.10   | 23.75 | 10.92 | 12.41 | 11.88   | 12.51 |
| 1982 | 22.80 | 22.74 | 25.88   | 24.18 | 6.61  | 12.45 | 7.43    | 12.38 |
| 1983 | 32.74 | 28.88 | 37.79   | 30.42 | 7.91  | 13.44 | 8.97    | 13.20 |
| 1984 | 29.65 | 27.64 | 33.41   | 28.91 | 9.85  | 13.33 | 11.00   | 12.88 |
| 1985 | 24.25 | 25.98 | 27.61   | 26.89 | 9.57  | 13.12 | 10.69   | 12.48 |
| 1986 | 30.46 | 27.76 | 34.06   | 28.40 | 9.65  | 14.91 | 10.40   | 14.00 |
| 1987 | 34.39 | 25.59 | 38.34   | 25.85 | 8.09  | 13.83 | 8.56    | 12.71 |
| 1988 | 25.92 | 23.83 | 29.25   | 23.85 | 7.69  | 13.70 | 8.43    | 12.34 |
| 1989 | 25.62 | 21.50 | 28.03   | 21.31 | 8.44  | 13.14 | 8.79    | 11.63 |
| 1990 | 26.34 | 20.44 | 29.06   | 20.03 | 9.17  | 12.44 | 9.76    | 10.82 |
| 1991 | 28.62 | 20.65 | 31.11   | 19.91 | 7.19  | 11.80 | 7.52    | 10.12 |
| 1992 | 29.87 | 22.30 | 32.42   | 21.11 | 8.24  | 11.73 | 8.70    | 9.90  |
| 1993 | 26.52 | 22.30 | 28.21   | 20.80 | 9.12  | 11.06 | 9.16    | 9.25  |
| 1994 | 30.70 | 23.11 | 32.20   | 21.33 | 9.53  | 10.86 | 9.81    | 8.99  |
| 1995 | 33.51 | 23.36 | 35.73   | 21.32 | 6.05  | 11.34 | 6.26    | 9.31  |
| 1996 | 26.54 | 24.30 | 27.49   | 21.97 | 8.78  | 11.46 | 9.03    | 9.30  |
| 1997 | 30.15 | 25.98 | 30.87   | 23.19 | 7.95  | 11.91 | 8.30    | 9.61  |
| 1998 | 38.75 | 36.45 | 38.91   | 32.15 | 10.48 | 14.71 | 10.72   | 11.82 |
| 1999 | 39.87 | 36.51 | 40.56   | 32.04 | 11.62 | 14.06 | 11.84   | 11.28 |
| 2000 | 42.21 | 35.22 | 42.39   | 30.66 | 11.24 | 13.40 | 11.06   | 10.66 |
| 2001 | 39.17 | 34.23 | 38.55   | 29.70 | 8.64  | 12.89 | 8.51    | 10.29 |
| 2002 | 40.76 | 35.20 | 40.46   | 30.51 | 9.17  | 12.84 | 8.93    | 10.20 |
| 2003 | 42.03 | 37.97 | 40.85   | 33.37 | 10.87 | 13.50 | 10.17   | 10.93 |
| 2004 | 39.19 | 35.64 | 38.37   | 31.07 | 8.61  | 12.84 | 8.23    | 10.43 |
| 2005 | 40.30 | 36.09 | 39.37   | 31.55 | 8.70  | 12.88 | 8.68    | 10.66 |
| 2006 | 43.72 | 34.79 | 41.31   | 30.32 | 11.83 | 13.15 | 11.29   | 10.90 |
| 2007 | 37.28 | 35.78 | 34.97   | 30.89 | 9.91  | 13.64 | 9.96    | 11.17 |
| 2008 | 36.97 | 35.08 | 34.79   | 30.51 | 11.30 | 13.42 | 10.92   | 11.22 |
| 2009 | 43.32 | 36.17 | 40.58   | 31.49 | 12.81 | 13.15 | 12.09   | 11.03 |
| 2010 | 38.28 | 34.15 | 36.18   | 29.79 | 13.18 | 13.16 | 12.81   | 10.87 |
| 2011 | 43.54 | 32.39 | 39.97   | 28.35 | 11.56 | 13.89 | 10.79   | 11.81 |
| 2012 | 32.70 | 30.14 | 29.62   | 26.41 | 8.56  | 12.30 | 8.35    | 10.24 |

# 自殺

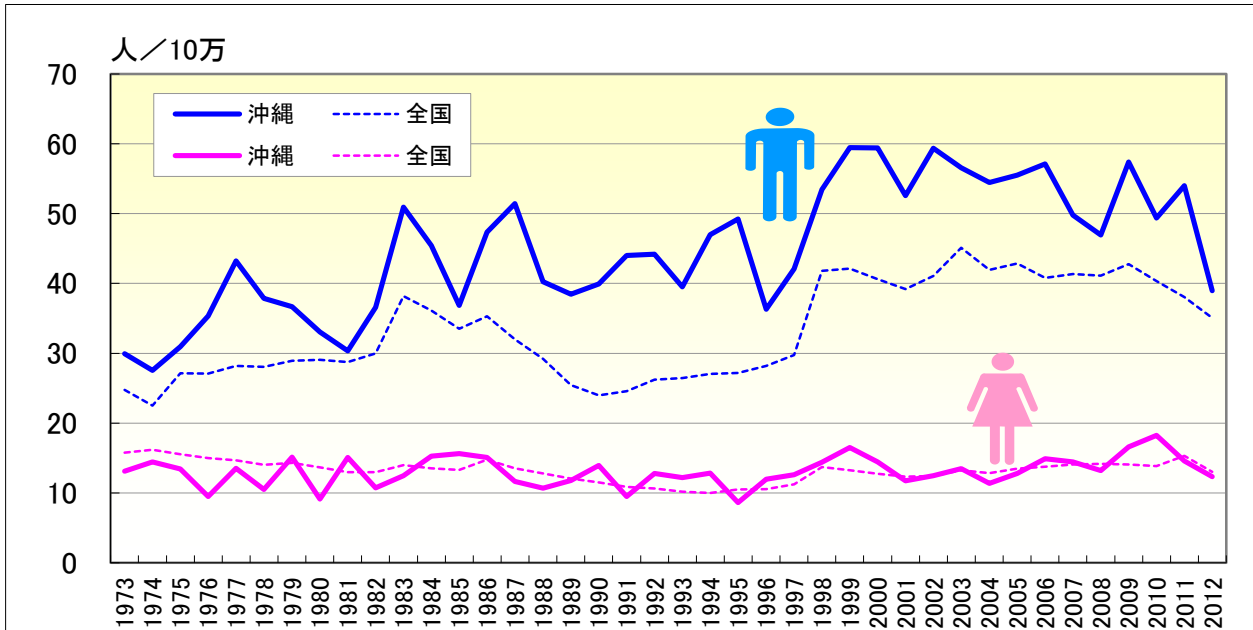
## ● 年齢調整死亡率（0-19歳）の年次推移（沖縄、全国：1973-2012）



|      | 男性      |       |             |      | 女性      |       |             |      |
|------|---------|-------|-------------|------|---------|-------|-------------|------|
|      | 年齢調整死亡率 |       | 0-19年齢調整死亡率 |      | 年齢調整死亡率 |       | 0-19年齢調整死亡率 |      |
|      | 沖縄      | 全国    | 沖縄          | 全国   | 沖縄      | 全国    | 沖縄          | 全国   |
| 1973 | 23.15   | 23.29 | 4.73        | 3.64 | 9.48    | 16.12 | 2.51        | 2.10 |
| 1974 | 21.27   | 21.29 | 2.46        | 3.42 | 11.26   | 16.31 | 1.02        | 2.02 |
| 1975 | 23.00   | 24.14 | 8.36        | 3.63 | 9.68    | 15.61 | 1.55        | 1.89 |
| 1976 | 27.07   | 23.59 | 5.47        | 3.28 | 6.80    | 15.06 | 2.57        | 1.92 |
| 1977 | 30.02   | 24.36 | 4.52        | 3.38 | 10.07   | 14.58 | 0.48        | 1.83 |
| 1978 | 29.16   | 24.21 | 3.07        | 3.61 | 6.84    | 13.98 | 0.54        | 1.90 |
| 1979 | 28.05   | 24.69 | 6.28        | 3.94 | 11.84   | 14.05 | 1.09        | 1.77 |
| 1980 | 27.55   | 24.26 | 3.15        | 2.68 | 7.45    | 13.43 | 2.02        | 1.35 |
| 1981 | 24.10   | 23.75 | 5.81        | 2.66 | 11.88   | 12.51 | 2.69        | 1.11 |
| 1982 | 25.88   | 24.18 | 2.05        | 2.37 | 7.43    | 12.38 | 0.55        | 1.05 |
| 1983 | 37.79   | 30.42 | 5.84        | 2.61 | 8.97    | 13.20 | 0.55        | 1.19 |
| 1984 | 33.41   | 28.91 | 4.76        | 2.08 | 11.00   | 12.88 | 1.64        | 1.08 |
| 1985 | 27.61   | 26.89 | 3.59        | 2.04 | 10.69   | 12.48 | 0.54        | 0.98 |
| 1986 | 34.06   | 28.40 | 3.02        | 2.54 | 10.40   | 14.00 | 1.07        | 1.67 |
| 1987 | 38.34   | 25.85 | 4.06        | 1.92 | 8.56    | 12.71 | 1.04        | 1.04 |
| 1988 | 29.25   | 23.85 | 1.00        | 1.70 | 8.43    | 12.34 | 1.53        | 1.21 |
| 1989 | 28.03   | 21.31 | 0.49        | 1.58 | 8.79    | 11.63 | 1.00        | 1.05 |
| 1990 | 29.06   | 20.03 | 0.47        | 1.40 | 9.76    | 10.82 | 0.49        | 0.83 |
| 1991 | 31.11   | 19.91 | 1.45        | 1.39 | 7.52    | 10.12 | 0.99        | 0.75 |
| 1992 | 32.42   | 21.11 | 1.48        | 1.67 | 8.70    | 9.90  | 1.01        | 1.03 |
| 1993 | 28.21   | 20.80 | 0.50        | 1.56 | 9.16    | 9.25  | 1.03        | 0.76 |
| 1994 | 32.20   | 21.33 | 2.00        | 2.19 | 9.81    | 8.99  | 2.60        | 0.92 |
| 1995 | 35.73   | 21.32 | 0.51        | 1.98 | 6.26    | 9.31  | 1.05        | 1.00 |
| 1996 | 27.49   | 21.97 | 1.52        | 1.99 | 9.03    | 9.30  | 1.05        | 0.94 |
| 1997 | 30.87   | 23.19 | 1.54        | 2.00 | 8.30    | 9.61  | 0.54        | 0.87 |
| 1998 | 38.91   | 32.15 | 3.09        | 3.24 | 10.72   | 11.82 | 2.15        | 1.46 |
| 1999 | 40.56   | 32.04 | 1.04        | 2.72 | 11.84   | 11.28 | 0.54        | 1.46 |
| 2000 | 42.39   | 30.66 | 1.57        | 2.70 | 11.06   | 10.66 | 1.64        | 1.11 |
| 2001 | 38.55   | 29.70 | 2.66        | 2.47 | 8.51    | 10.29 | 0.56        | 1.39 |
| 2002 | 40.46   | 30.51 | 1.61        | 2.14 | 8.93    | 10.20 | 0.56        | 1.09 |
| 2003 | 40.85   | 33.37 | 1.09        | 2.53 | 10.17   | 10.93 | 1.14        | 1.72 |
| 2004 | 38.37   | 31.07 | 2.76        | 2.57 | 8.23    | 10.43 | 1.16        | 1.67 |
| 2005 | 39.37   | 31.55 | 1.68        | 2.70 | 8.68    | 10.66 |             | 1.68 |
| 2006 | 41.31   | 30.32 | 1.14        | 3.03 | 11.29   | 10.90 | 1.19        | 1.62 |
| 2007 | 34.97   | 30.89 | 0.58        | 2.55 | 9.96    | 11.17 | 1.21        | 1.57 |
| 2008 | 34.79   | 30.51 | 1.75        | 2.87 | 10.92   | 11.22 | 2.45        | 1.86 |
| 2009 | 40.58   | 31.49 | 0.59        | 2.77 | 12.09   | 11.03 | 0.62        | 1.56 |
| 2010 | 36.18   | 29.79 | 3.00        | 2.85 | 12.81   | 10.87 | 2.50        | 1.50 |
| 2011 | 39.97   | 28.35 | 3.06        | 3.29 | 10.79   | 11.81 | 0.64        | 1.66 |
| 2012 | 29.62   | 26.41 | 2.46        | 3.36 | 8.35    | 10.24 | 0.63        | 1.62 |

# 自殺

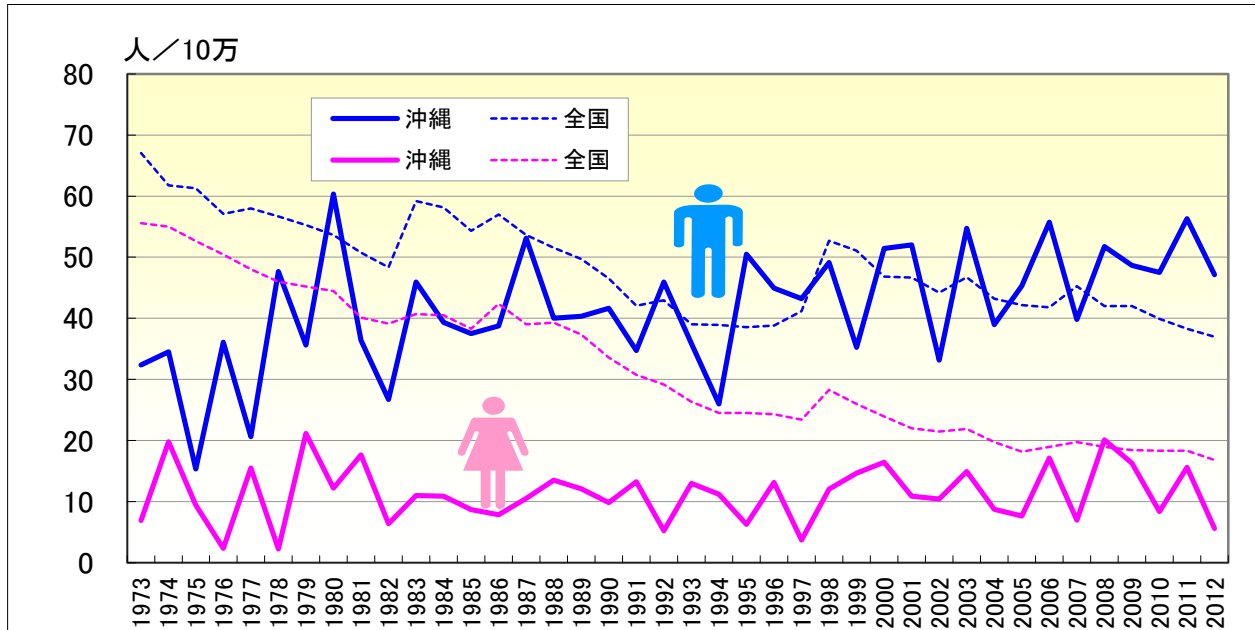
## ● 年齢調整死亡率（20-64歳）の年次推移（沖縄、全国：1973-2012）



|      | 男性      |       |              |       | 女性      |       |              |       |
|------|---------|-------|--------------|-------|---------|-------|--------------|-------|
|      | 年齢調整死亡率 |       | 20-64年齢調整死亡率 |       | 年齢調整死亡率 |       | 20-64年齢調整死亡率 |       |
|      | 沖縄      | 全国    | 沖縄           | 全国    | 沖縄      | 全国    | 沖縄           | 全国    |
| 1973 | 23.15   | 23.29 | 29.95        | 24.77 | 9.48    | 16.12 | 13.09        | 15.77 |
| 1974 | 21.27   | 21.29 | 27.58        | 22.52 | 11.26   | 16.31 | 14.46        | 16.20 |
| 1975 | 23.00   | 24.14 | 30.96        | 27.13 | 9.68    | 15.61 | 13.43        | 15.54 |
| 1976 | 27.07   | 23.59 | 35.37        | 27.12 | 6.80    | 15.06 | 9.49         | 15.00 |
| 1977 | 30.02   | 24.36 | 43.22        | 28.18 | 10.07   | 14.58 | 13.51        | 14.68 |
| 1978 | 29.16   | 24.21 | 37.87        | 28.05 | 6.84    | 13.98 | 10.49        | 14.03 |
| 1979 | 28.05   | 24.69 | 36.66        | 28.92 | 11.84   | 14.05 | 15.14        | 14.32 |
| 1980 | 27.55   | 24.26 | 33.06        | 29.08 | 7.45    | 13.43 | 9.11         | 13.64 |
| 1981 | 24.10   | 23.75 | 30.33        | 28.73 | 11.88   | 12.51 | 15.08        | 12.98 |
| 1982 | 25.88   | 24.18 | 36.58        | 29.98 | 7.43    | 12.38 | 10.74        | 12.99 |
| 1983 | 37.79   | 30.42 | 50.95        | 38.17 | 8.97    | 13.20 | 12.46        | 13.97 |
| 1984 | 33.41   | 28.91 | 45.43        | 36.14 | 11.00   | 12.88 | 15.28        | 13.54 |
| 1985 | 27.61   | 26.89 | 36.85        | 33.52 | 10.69   | 12.48 | 15.64        | 13.32 |
| 1986 | 34.06   | 28.40 | 47.37        | 35.28 | 10.40   | 14.00 | 15.09        | 14.77 |
| 1987 | 38.34   | 25.85 | 51.43        | 32.00 | 8.56    | 12.71 | 11.64        | 13.53 |
| 1988 | 29.25   | 23.85 | 40.27        | 29.20 | 8.43    | 12.34 | 10.70        | 12.81 |
| 1989 | 28.03   | 21.31 | 38.46        | 25.45 | 8.79    | 11.63 | 11.77        | 12.05 |
| 1990 | 29.06   | 20.03 | 39.93        | 23.99 | 9.76    | 10.82 | 13.96        | 11.49 |
| 1991 | 31.11   | 19.91 | 43.99        | 24.56 | 7.52    | 10.12 | 9.51         | 10.87 |
| 1992 | 32.42   | 21.11 | 44.20        | 26.23 | 8.70    | 9.90  | 12.78        | 10.66 |
| 1993 | 28.21   | 20.80 | 39.52        | 26.45 | 9.16    | 9.25  | 12.21        | 10.19 |
| 1994 | 32.20   | 21.33 | 47.00        | 27.04 | 9.81    | 8.99  | 12.85        | 10.02 |
| 1995 | 35.73   | 21.32 | 49.24        | 27.19 | 6.26    | 9.31  | 8.63         | 10.49 |
| 1996 | 27.49   | 21.97 | 36.33        | 28.19 | 9.03    | 9.30  | 11.96        | 10.54 |
| 1997 | 30.87   | 23.19 | 42.10        | 29.76 | 8.30    | 9.61  | 12.62        | 11.22 |
| 1998 | 38.91   | 32.15 | 53.47        | 41.79 | 10.72   | 11.82 | 14.39        | 13.73 |
| 1999 | 40.56   | 32.04 | 59.44        | 42.14 | 11.84   | 11.28 | 16.49        | 13.24 |
| 2000 | 42.39   | 30.66 | 59.42        | 40.63 | 11.06   | 10.66 | 14.43        | 12.74 |
| 2001 | 38.55   | 29.70 | 52.59        | 39.20 | 8.51    | 10.29 | 11.73        | 12.35 |
| 2002 | 40.46   | 30.51 | 59.38        | 41.08 | 8.93    | 10.20 | 12.48        | 12.41 |
| 2003 | 40.85   | 33.37 | 56.57        | 45.13 | 10.17   | 10.93 | 13.47        | 13.25 |
| 2004 | 38.37   | 31.07 | 54.47        | 41.97 | 8.23    | 10.43 | 11.36        | 12.83 |
| 2005 | 39.37   | 31.55 | 55.50        | 42.87 | 8.68    | 10.66 | 12.81        | 13.47 |
| 2006 | 41.31   | 30.32 | 57.14        | 40.78 | 11.29   | 10.90 | 14.89        | 13.75 |
| 2007 | 34.97   | 30.89 | 49.79        | 41.33 | 9.96    | 11.17 | 14.45        | 14.08 |
| 2008 | 34.79   | 30.51 | 46.94        | 41.12 | 10.92   | 11.22 | 13.20        | 14.16 |
| 2009 | 40.58   | 31.49 | 57.40        | 42.76 | 12.09   | 11.03 | 16.60        | 14.07 |
| 2010 | 36.18   | 29.79 | 49.35        | 40.33 | 12.81   | 10.87 | 18.26        | 13.86 |
| 2011 | 39.97   | 28.35 | 53.99        | 38.05 | 10.79   | 11.81 | 14.58        | 15.31 |
| 2012 | 29.62   | 26.41 | 38.98        | 35.09 | 8.35    | 10.24 | 12.33        | 13.04 |

# 自殺

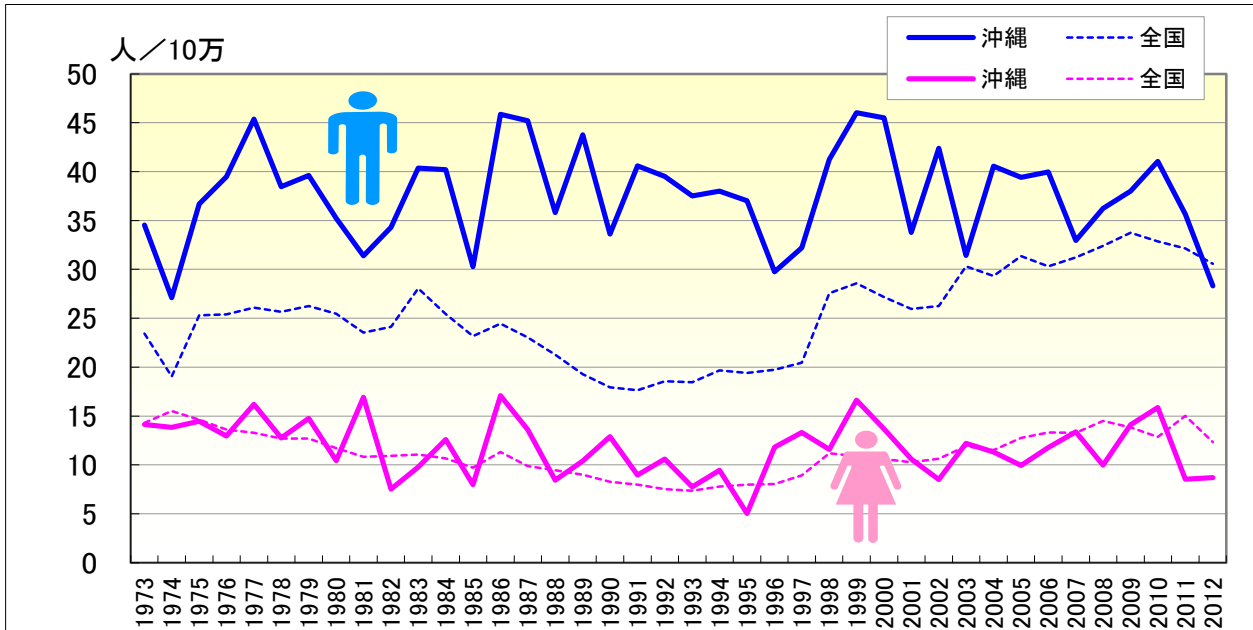
## ● 年齢調整死亡率（65歳以上）の年次推移（沖縄、全国：1973-2012）



|      | 男性      |       |            |       | 女性      |       |            |       |
|------|---------|-------|------------|-------|---------|-------|------------|-------|
|      | 年齢調整死亡率 |       | 65-年齢調整死亡率 |       | 年齢調整死亡率 |       | 65-年齢調整死亡率 |       |
|      | 沖縄      | 全国    | 沖縄         | 全国    | 沖縄      | 全国    | 沖縄         | 全国    |
| 1973 | 23.15   | 23.29 | 32.38      | 67.05 | 9.48    | 16.12 | 6.92       | 55.55 |
| 1974 | 21.27   | 21.29 | 34.49      | 61.74 | 11.26   | 16.31 | 19.81      | 55.02 |
| 1975 | 23.00   | 24.14 | 15.37      | 61.28 | 9.68    | 15.61 | 9.40       | 52.66 |
| 1976 | 27.07   | 23.59 | 36.07      | 57.10 | 6.80    | 15.06 | 2.37       | 50.43 |
| 1977 | 30.02   | 24.36 | 20.63      | 57.96 | 10.07   | 14.58 | 15.47      | 48.05 |
| 1978 | 29.16   | 24.21 | 47.66      | 56.65 | 6.84    | 13.98 | 2.25       | 45.99 |
| 1979 | 28.05   | 24.69 | 35.61      | 55.27 | 11.84   | 14.05 | 21.15      | 45.19 |
| 1980 | 27.55   | 24.26 | 60.33      | 53.62 | 7.45    | 13.43 | 12.19      | 44.45 |
| 1981 | 24.10   | 23.75 | 36.39      | 50.76 | 11.88   | 12.51 | 17.63      | 40.14 |
| 1982 | 25.88   | 24.18 | 26.72      | 48.35 | 7.43    | 12.38 | 6.37       | 39.11 |
| 1983 | 37.79   | 30.42 | 45.91      | 59.19 | 8.97    | 13.20 | 10.99      | 40.70 |
| 1984 | 33.41   | 28.91 | 39.33      | 58.16 | 11.00   | 12.88 | 10.89      | 40.49 |
| 1985 | 27.61   | 26.89 | 37.51      | 54.31 | 10.69   | 12.48 | 8.70       | 38.28 |
| 1986 | 34.06   | 28.40 | 38.78      | 57.01 | 10.40   | 14.00 | 7.85       | 42.37 |
| 1987 | 38.34   | 25.85 | 53.10      | 53.64 | 8.56    | 12.71 | 10.54      | 39.04 |
| 1988 | 29.25   | 23.85 | 40.02      | 51.55 | 8.43    | 12.34 | 13.50      | 39.26 |
| 1989 | 28.03   | 21.31 | 40.31      | 49.69 | 8.79    | 11.63 | 12.07      | 37.37 |
| 1990 | 29.06   | 20.03 | 41.66      | 46.52 | 9.76    | 10.82 | 9.82       | 33.57 |
| 1991 | 31.11   | 19.91 | 34.70      | 42.07 | 7.52    | 10.12 | 13.24      | 30.74 |
| 1992 | 32.42   | 21.11 | 45.95      | 42.95 | 8.70    | 9.90  | 5.26       | 29.15 |
| 1993 | 28.21   | 20.80 | 35.89      | 39.02 | 9.16    | 9.25  | 12.98      | 26.34 |
| 1994 | 32.20   | 21.33 | 25.98      | 38.90 | 9.81    | 8.99  | 11.21      | 24.51 |
| 1995 | 35.73   | 21.32 | 50.47      | 38.53 | 6.26    | 9.31  | 6.26       | 24.50 |
| 1996 | 27.49   | 21.97 | 44.94      | 38.83 | 9.03    | 9.30  | 13.13      | 24.30 |
| 1997 | 30.87   | 23.19 | 43.23      | 41.19 | 8.30    | 9.61  | 3.72       | 23.43 |
| 1998 | 38.91   | 32.15 | 49.11      | 52.71 | 10.72   | 11.82 | 12.04      | 28.30 |
| 1999 | 40.56   | 32.04 | 35.23      | 51.07 | 11.84   | 11.28 | 14.65      | 25.96 |
| 2000 | 42.39   | 30.66 | 51.42      | 46.82 | 11.06   | 10.66 | 16.42      | 23.95 |
| 2001 | 38.55   | 29.70 | 51.99      | 46.66 | 8.51    | 10.29 | 10.88      | 21.98 |
| 2002 | 40.46   | 30.51 | 33.16      | 44.23 | 8.93    | 10.20 | 10.41      | 21.50 |
| 2003 | 40.85   | 33.37 | 54.71      | 46.70 | 10.17   | 10.93 | 14.94      | 21.92 |
| 2004 | 38.37   | 31.07 | 38.94      | 43.19 | 8.23    | 10.43 | 8.76       | 19.74 |
| 2005 | 39.37   | 31.55 | 45.31      | 42.18 | 8.68    | 10.66 | 7.64       | 18.15 |
| 2006 | 41.31   | 30.32 | 55.71      | 41.77 | 11.29   | 10.90 | 17.13      | 18.97 |
| 2007 | 34.97   | 30.89 | 39.78      | 45.23 | 9.96    | 11.17 | 6.94       | 19.74 |
| 2008 | 34.79   | 30.51 | 51.75      | 41.99 | 10.92   | 11.22 | 20.12      | 18.93 |
| 2009 | 40.58   | 31.49 | 48.64      | 42.01 | 12.09   | 11.03 | 16.27      | 18.45 |
| 2010 | 36.18   | 29.79 | 47.52      | 39.91 | 12.81   | 10.87 | 8.37       | 18.32 |
| 2011 | 39.97   | 28.35 | 56.29      | 38.28 | 10.79   | 11.81 | 15.63      | 18.34 |
| 2012 | 29.62   | 26.41 | 47.15      | 36.96 | 8.35    | 10.24 | 5.61       | 16.82 |

# 自殺

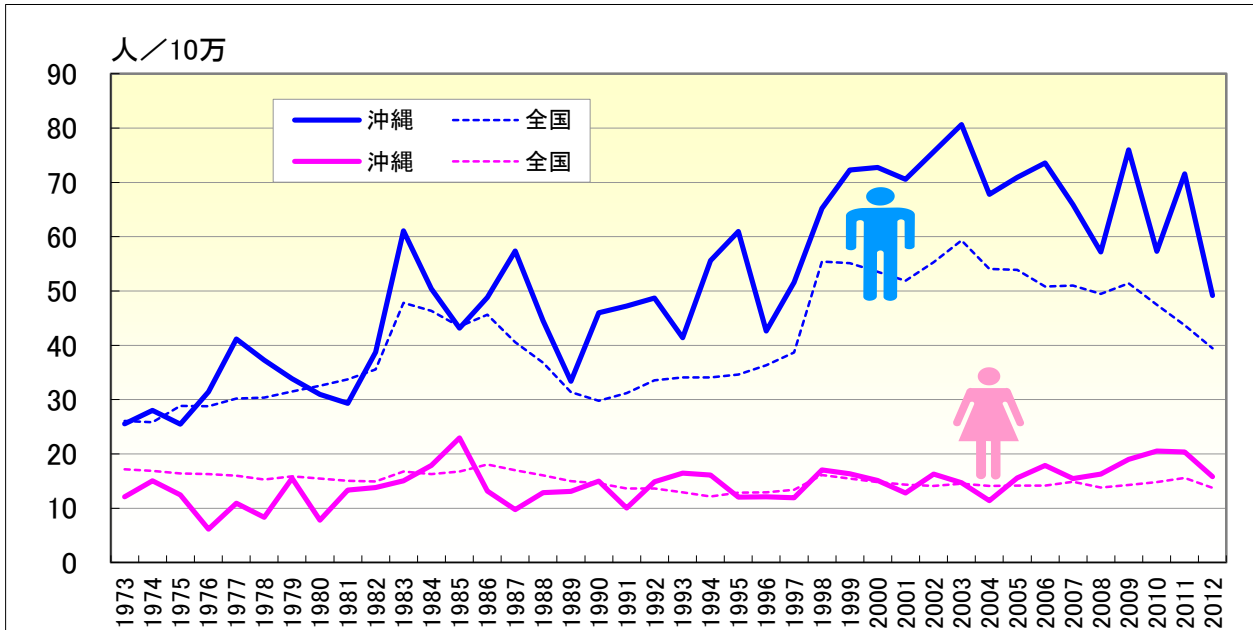
## ● 年齢調整死亡率（20-39歳）の年次推移（沖縄、全国：1973-2012）



|      | 男性           |       |              |       | 女性           |       |              |       |
|------|--------------|-------|--------------|-------|--------------|-------|--------------|-------|
|      | 20-64年齢調整死亡率 |       | 20-39年齢調整死亡率 |       | 20-64年齢調整死亡率 |       | 20-39年齢調整死亡率 |       |
|      | 沖縄           | 全国    | 沖縄           | 全国    | 沖縄           | 全国    | 沖縄           | 全国    |
| 1973 | 29.95        | 24.77 | 34.54        | 23.42 | 13.09        | 15.77 | 14.13        | 14.30 |
| 1974 | 27.58        | 22.52 | 27.10        | 19.05 | 14.46        | 16.20 | 13.85        | 15.52 |
| 1975 | 30.96        | 27.13 | 36.68        | 25.31 | 13.43        | 15.54 | 14.46        | 14.64 |
| 1976 | 35.37        | 27.12 | 39.47        | 25.41 | 9.49         | 15.00 | 12.97        | 13.63 |
| 1977 | 43.22        | 28.18 | 45.38        | 26.07 | 13.51        | 14.68 | 16.18        | 13.28 |
| 1978 | 37.87        | 28.05 | 38.47        | 25.64 | 10.49        | 14.03 | 12.74        | 12.70 |
| 1979 | 36.66        | 28.92 | 39.60        | 26.26 | 15.14        | 14.32 | 14.76        | 12.68 |
| 1980 | 33.06        | 29.08 | 35.23        | 25.47 | 9.11         | 13.64 | 10.44        | 11.73 |
| 1981 | 30.33        | 28.73 | 31.38        | 23.53 | 15.08        | 12.98 | 16.91        | 10.83 |
| 1982 | 36.58        | 29.98 | 34.31        | 24.13 | 10.74        | 12.99 | 7.52         | 10.93 |
| 1983 | 50.95        | 38.17 | 40.35        | 28.06 | 12.46        | 13.97 | 9.77         | 11.05 |
| 1984 | 45.43        | 36.14 | 40.21        | 25.45 | 15.28        | 13.54 | 12.60        | 10.65 |
| 1985 | 36.85        | 33.52 | 30.27        | 23.16 | 15.64        | 13.32 | 7.99         | 9.72  |
| 1986 | 47.37        | 35.28 | 45.86        | 24.46 | 15.09        | 14.77 | 17.08        | 11.33 |
| 1987 | 51.43        | 32.00 | 45.20        | 23.03 | 11.64        | 13.53 | 13.61        | 9.88  |
| 1988 | 40.27        | 29.20 | 35.81        | 21.27 | 10.70        | 12.81 | 8.44         | 9.45  |
| 1989 | 38.46        | 25.45 | 43.78        | 19.26 | 11.77        | 12.05 | 10.39        | 8.98  |
| 1990 | 39.93        | 23.99 | 33.60        | 17.92 | 13.96        | 11.49 | 12.89        | 8.27  |
| 1991 | 43.99        | 24.56 | 40.61        | 17.64 | 9.51         | 10.87 | 8.97         | 7.97  |
| 1992 | 44.20        | 26.23 | 39.50        | 18.56 | 12.78        | 10.66 | 10.59        | 7.52  |
| 1993 | 39.52        | 26.45 | 37.53        | 18.47 | 12.21        | 10.19 | 7.76         | 7.34  |
| 1994 | 47.00        | 27.04 | 38.00        | 19.68 | 12.85        | 10.02 | 9.47         | 7.77  |
| 1995 | 49.24        | 27.19 | 37.01        | 19.41 | 8.63         | 10.49 | 5.03         | 7.99  |
| 1996 | 36.33        | 28.19 | 29.76        | 19.72 | 11.96        | 10.54 | 11.81        | 8.06  |
| 1997 | 42.10        | 29.76 | 32.20        | 20.44 | 12.62        | 11.22 | 13.33        | 8.93  |
| 1998 | 53.47        | 41.79 | 41.23        | 27.55 | 14.39        | 13.73 | 11.58        | 11.20 |
| 1999 | 59.44        | 42.14 | 46.02        | 28.59 | 16.49        | 13.24 | 16.62        | 10.90 |
| 2000 | 59.42        | 40.63 | 45.50        | 27.15 | 14.43        | 12.74 | 13.69        | 10.59 |
| 2001 | 52.59        | 39.20 | 33.79        | 25.95 | 11.73        | 12.35 | 10.60        | 10.27 |
| 2002 | 59.38        | 41.08 | 42.40        | 26.25 | 12.48        | 12.41 | 8.52         | 10.64 |
| 2003 | 56.57        | 45.13 | 31.42        | 30.30 | 13.47        | 13.25 | 12.21        | 11.92 |
| 2004 | 54.47        | 41.97 | 40.54        | 29.34 | 11.36        | 12.83 | 11.32        | 11.52 |
| 2005 | 55.50        | 42.87 | 39.40        | 31.35 | 12.81        | 13.47 | 9.94         | 12.76 |
| 2006 | 57.14        | 40.78 | 39.98        | 30.31 | 14.89        | 13.75 | 11.79        | 13.33 |
| 2007 | 49.79        | 41.33 | 32.96        | 31.21 | 14.45        | 14.08 | 13.38        | 13.27 |
| 2008 | 46.94        | 41.12 | 36.25        | 32.41 | 13.20        | 14.16 | 9.99         | 14.49 |
| 2009 | 57.40        | 42.76 | 38.02        | 33.74 | 16.60        | 14.07 | 14.11        | 13.83 |
| 2010 | 49.35        | 40.33 | 41.06        | 32.86 | 18.26        | 13.86 | 15.89        | 12.85 |
| 2011 | 53.99        | 38.05 | 35.65        | 32.15 | 14.58        | 15.31 | 8.54         | 15.01 |
| 2012 | 38.98        | 35.09 | 28.32        | 30.57 | 12.33        | 13.04 | 8.71         | 12.32 |

# 自殺

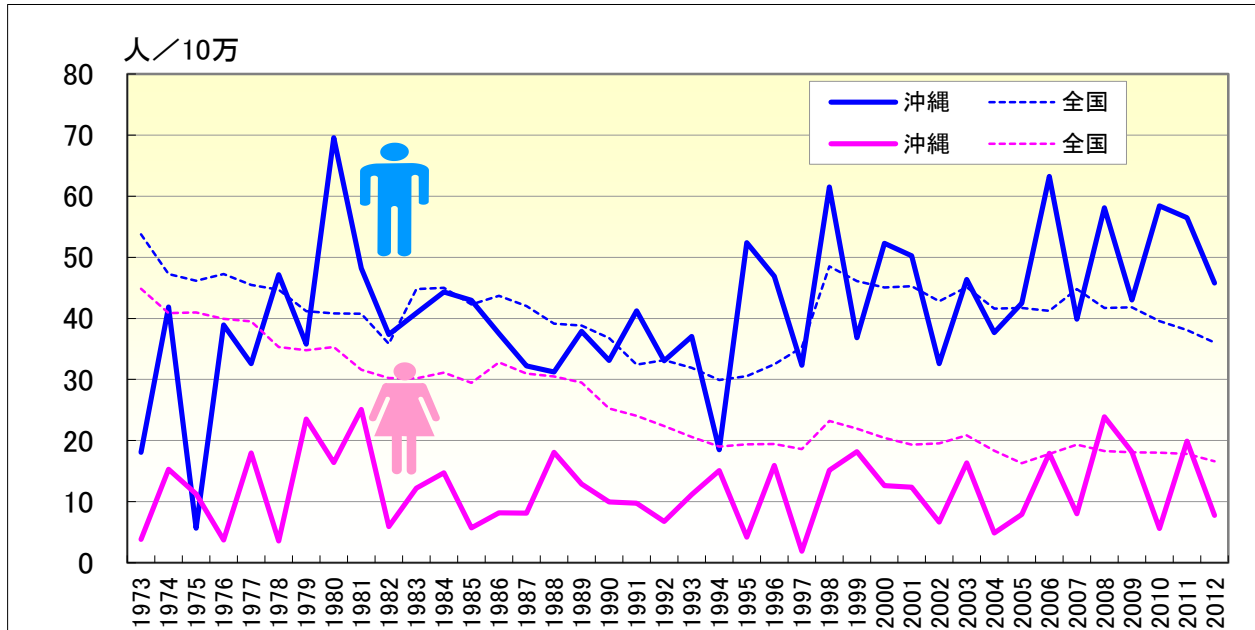
## ● 年齢調整死亡率（40-64歳）の年次推移（沖縄、全国：1973-2012）



|      | 男性           |       |              |       | 女性           |       |              |       |
|------|--------------|-------|--------------|-------|--------------|-------|--------------|-------|
|      | 20-64年齢調整死亡率 |       | 40-64年齢調整死亡率 |       | 20-64年齢調整死亡率 |       | 40-64年齢調整死亡率 |       |
|      | 沖縄           | 全国    | 沖縄           | 全国    | 沖縄           | 全国    | 沖縄           | 全国    |
| 1973 | 29.95        | 24.77 | 25.56        | 26.07 | 13.09        | 15.77 | 12.10        | 17.19 |
| 1974 | 27.58        | 22.52 | 28.03        | 25.84 | 14.46        | 16.20 | 15.05        | 16.86 |
| 1975 | 30.96        | 27.13 | 25.48        | 28.88 | 13.43        | 15.54 | 12.45        | 16.41 |
| 1976 | 35.37        | 27.12 | 31.43        | 28.76 | 9.49         | 15.00 | 6.15         | 16.32 |
| 1977 | 43.22        | 28.18 | 41.15        | 30.19 | 13.51        | 14.68 | 10.96        | 16.01 |
| 1978 | 37.87        | 28.05 | 37.30        | 30.36 | 10.49        | 14.03 | 8.33         | 15.30 |
| 1979 | 36.66        | 28.92 | 33.85        | 31.48 | 15.14        | 14.32 | 15.51        | 15.90 |
| 1980 | 33.06        | 29.08 | 30.98        | 32.53 | 9.11         | 13.64 | 7.83         | 15.48 |
| 1981 | 30.33        | 28.73 | 29.33        | 33.72 | 15.08        | 12.98 | 13.33        | 15.04 |
| 1982 | 36.58        | 29.98 | 38.76        | 35.58 | 10.74        | 12.99 | 13.83        | 14.95 |
| 1983 | 50.95        | 38.17 | 61.09        | 47.85 | 12.46        | 13.97 | 15.03        | 16.76 |
| 1984 | 45.43        | 36.14 | 50.44        | 46.38 | 15.28        | 13.54 | 17.86        | 16.30 |
| 1985 | 36.85        | 33.52 | 43.16        | 43.45 | 15.64        | 13.32 | 22.97        | 16.76 |
| 1986 | 47.37        | 35.28 | 48.82        | 45.65 | 15.09        | 14.77 | 13.18        | 18.07 |
| 1987 | 51.43        | 32.00 | 57.39        | 40.59 | 11.64        | 13.53 | 9.74         | 17.03 |
| 1988 | 40.27        | 29.20 | 44.55        | 36.79 | 10.70        | 12.81 | 12.86        | 16.03 |
| 1989 | 38.46        | 25.45 | 33.37        | 31.38 | 11.77        | 12.05 | 13.09        | 15.00 |
| 1990 | 39.93        | 23.99 | 45.99        | 29.79 | 13.96        | 11.49 | 14.98        | 14.59 |
| 1991 | 43.99        | 24.56 | 47.24        | 31.18 | 9.51         | 10.87 | 10.03        | 13.64 |
| 1992 | 44.20        | 26.23 | 48.69        | 33.58 | 12.78        | 10.66 | 14.87        | 13.66 |
| 1993 | 39.52        | 26.45 | 41.42        | 34.09 | 12.21        | 10.19 | 16.48        | 12.92 |
| 1994 | 47.00        | 27.04 | 55.62        | 34.08 | 12.85        | 10.02 | 16.09        | 12.18 |
| 1995 | 49.24        | 27.19 | 60.95        | 34.64 | 8.63         | 10.49 | 12.07        | 12.89 |
| 1996 | 36.33        | 28.19 | 42.61        | 36.31 | 11.96        | 10.54 | 12.12        | 12.92 |
| 1997 | 42.10        | 29.76 | 51.58        | 38.69 | 12.62        | 11.22 | 11.93        | 13.42 |
| 1998 | 53.47        | 41.79 | 65.19        | 55.44 | 14.39        | 13.73 | 17.09        | 16.14 |
| 1999 | 59.44        | 42.14 | 72.30        | 55.12 | 16.49        | 13.24 | 16.37        | 15.48 |
| 2000 | 59.42        | 40.63 | 72.75        | 53.54 | 14.43        | 12.74 | 15.13        | 14.80 |
| 2001 | 52.59        | 39.20 | 70.59        | 51.89 | 11.73        | 12.35 | 12.81        | 14.34 |
| 2002 | 59.38        | 41.08 | 75.64        | 55.29 | 12.48        | 12.41 | 16.28        | 14.11 |
| 2003 | 56.57        | 45.13 | 80.66        | 59.33 | 13.47        | 13.25 | 14.68        | 14.52 |
| 2004 | 54.47        | 41.97 | 67.81        | 54.07 | 11.36        | 12.83 | 11.39        | 14.09 |
| 2005 | 55.50        | 42.87 | 70.92        | 53.91 | 12.81        | 13.47 | 15.57        | 14.15 |
| 2006 | 57.14        | 40.78 | 73.58        | 50.81 | 14.89        | 13.75 | 17.86        | 14.15 |
| 2007 | 49.79        | 41.33 | 65.92        | 51.02 | 14.45        | 14.08 | 15.48        | 14.86 |
| 2008 | 46.94        | 41.12 | 57.18        | 49.47 | 13.20        | 14.16 | 16.29        | 13.85 |
| 2009 | 57.40        | 42.76 | 75.97        | 51.41 | 16.60        | 14.07 | 18.98        | 14.30 |
| 2010 | 49.35        | 40.33 | 57.30        | 47.48 | 18.26        | 13.86 | 20.54        | 14.83 |
| 2011 | 53.99        | 38.05 | 71.55        | 43.71 | 14.58        | 15.31 | 20.37        | 15.61 |
| 2012 | 38.98        | 35.09 | 49.20        | 39.43 | 12.33        | 13.04 | 15.79        | 13.73 |

# 自殺

## ● 年齢調整死亡率（65-74歳）の年次推移（沖縄、全国：1973-2012）

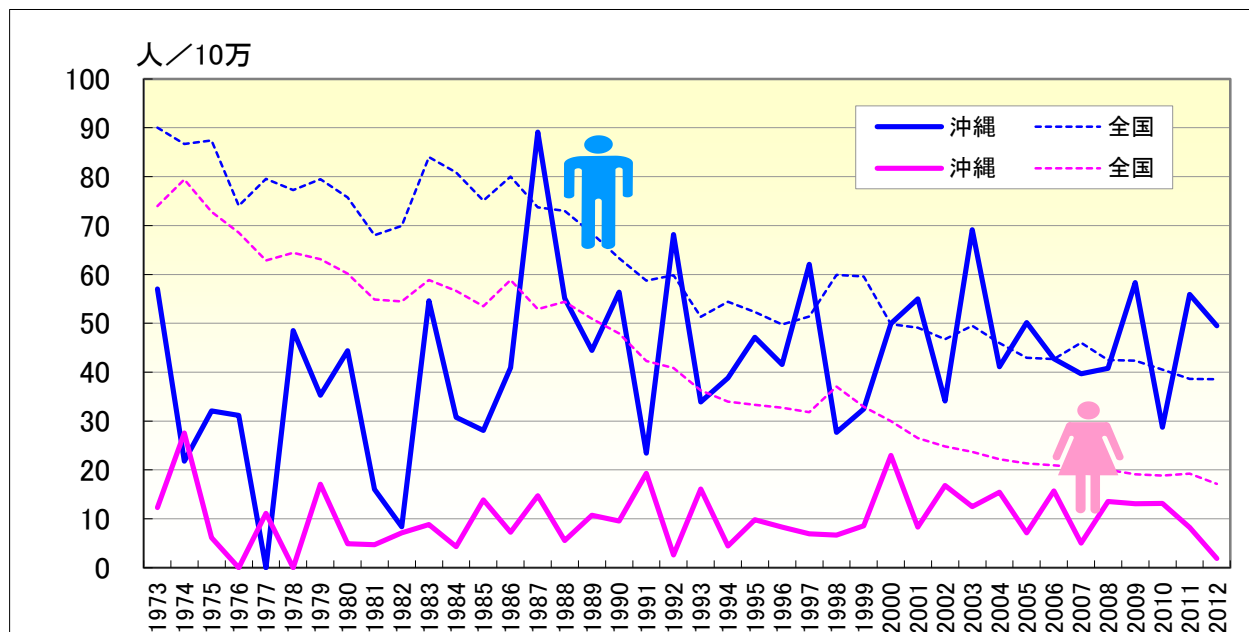


|      | 男性         |       |              |       | 女性         |       |              |       |
|------|------------|-------|--------------|-------|------------|-------|--------------|-------|
|      | 65-年齢調整死亡率 |       | 65-74年齢調整死亡率 |       | 65-年齢調整死亡率 |       | 65-74年齢調整死亡率 |       |
|      | 沖縄         | 全国    | 沖縄           | 全国    | 沖縄         | 全国    | 沖縄           | 全国    |
| 1973 | 32.38      | 67.05 | 18.08        | 53.75 | 6.92       | 55.55 | 3.81         | 44.86 |
| 1974 | 34.49      | 61.74 | 41.86        | 47.27 | 19.81      | 55.02 | 15.32        | 40.88 |
| 1975 | 15.37      | 61.28 | 5.66         | 46.14 | 9.40       | 52.66 | 11.30        | 40.98 |
| 1976 | 36.07      | 57.10 | 38.93        | 47.28 | 2.37       | 50.43 | 3.75         | 39.92 |
| 1977 | 20.63      | 57.96 | 32.59        | 45.45 | 15.47      | 48.05 | 18.00        | 39.48 |
| 1978 | 47.66      | 56.65 | 47.16        | 44.72 | 2.25       | 45.99 | 3.56         | 35.31 |
| 1979 | 35.61      | 55.27 | 35.80        | 41.21 | 21.15      | 45.19 | 23.53        | 34.81 |
| 1980 | 60.33      | 53.62 | 69.58        | 40.80 | 12.19      | 44.45 | 16.43        | 35.33 |
| 1981 | 36.39      | 50.76 | 48.20        | 40.76 | 17.63      | 40.14 | 25.12        | 31.59 |
| 1982 | 26.72      | 48.35 | 37.37        | 35.84 | 6.37       | 39.11 | 5.94         | 30.22 |
| 1983 | 45.91      | 59.19 | 40.86        | 44.81 | 10.99      | 40.70 | 12.22        | 30.17 |
| 1984 | 39.33      | 58.16 | 44.30        | 45.00 | 10.89      | 40.49 | 14.72        | 31.11 |
| 1985 | 37.51      | 54.31 | 42.95        | 42.26 | 8.70       | 38.28 | 5.70         | 29.46 |
| 1986 | 38.78      | 57.01 | 37.53        | 43.68 | 7.85       | 42.37 | 8.18         | 32.79 |
| 1987 | 53.10      | 53.64 | 32.23        | 42.01 | 10.54      | 39.04 | 8.12         | 30.98 |
| 1988 | 40.02      | 51.55 | 31.24        | 39.13 | 13.50      | 39.26 | 18.10        | 30.49 |
| 1989 | 40.31      | 49.69 | 37.91        | 38.83 | 12.07      | 37.37 | 12.87        | 29.49 |
| 1990 | 41.66      | 46.52 | 33.13        | 36.78 | 9.82       | 33.57 | 9.98         | 25.24 |
| 1991 | 34.70      | 42.07 | 41.25        | 32.43 | 13.24      | 30.74 | 9.73         | 24.05 |
| 1992 | 45.95      | 42.95 | 33.07        | 33.14 | 5.26       | 29.15 | 6.79         | 22.36 |
| 1993 | 35.89      | 39.02 | 37.05        | 31.89 | 12.98      | 26.34 | 11.16        | 20.60 |
| 1994 | 25.98      | 38.90 | 18.52        | 29.92 | 11.21      | 24.51 | 15.12        | 19.01 |
| 1995 | 50.47      | 38.53 | 52.42        | 30.54 | 6.26       | 24.50 | 4.19         | 19.40 |
| 1996 | 44.94      | 38.83 | 46.89        | 32.49 | 13.13      | 24.30 | 15.93        | 19.42 |
| 1997 | 43.23      | 41.19 | 32.32        | 35.26 | 3.72       | 23.43 | 1.87         | 18.58 |
| 1998 | 49.11      | 52.71 | 61.51        | 48.52 | 12.04      | 28.30 | 15.15        | 23.22 |
| 1999 | 35.23      | 51.07 | 36.82        | 46.13 | 14.65      | 25.96 | 18.17        | 21.93 |
| 2000 | 51.42      | 46.82 | 52.29        | 45.08 | 16.42      | 23.95 | 12.63        | 20.43 |
| 2001 | 51.99      | 46.66 | 50.23        | 45.25 | 10.88      | 21.98 | 12.38        | 19.36 |
| 2002 | 33.16      | 44.23 | 32.60        | 42.78 | 10.41      | 21.50 | 6.68         | 19.56 |
| 2003 | 54.71      | 46.70 | 46.34        | 45.09 | 14.94      | 21.92 | 16.34        | 20.88 |
| 2004 | 38.94      | 43.19 | 37.69        | 41.59 | 8.76       | 19.74 | 4.90         | 18.32 |
| 2005 | 45.31      | 42.18 | 42.50        | 41.71 | 7.64       | 18.15 | 7.93         | 16.31 |
| 2006 | 55.71      | 41.77 | 63.23        | 41.25 | 17.13      | 18.97 | 17.94        | 17.81 |
| 2007 | 39.78      | 45.23 | 39.87        | 44.78 | 6.94       | 19.74 | 8.04         | 19.31 |
| 2008 | 51.75      | 41.99 | 58.10        | 41.68 | 20.12      | 18.93 | 23.91        | 18.28 |
| 2009 | 48.64      | 42.01 | 43.03        | 41.80 | 16.27      | 18.45 | 18.12        | 18.08 |
| 2010 | 47.52      | 39.91 | 58.42        | 39.57 | 8.37       | 18.32 | 5.60         | 18.02 |
| 2011 | 56.29      | 38.28 | 56.49        | 38.07 | 15.63      | 18.34 | 19.91        | 17.80 |
| 2012 | 47.15      | 36.96 | 45.79        | 36.04 | 5.61       | 16.82 | 7.77         | 16.62 |



# 自殺

## ● 年齢調整死亡率（75歳以上）の年次推移（沖縄、全国：1973-2012）

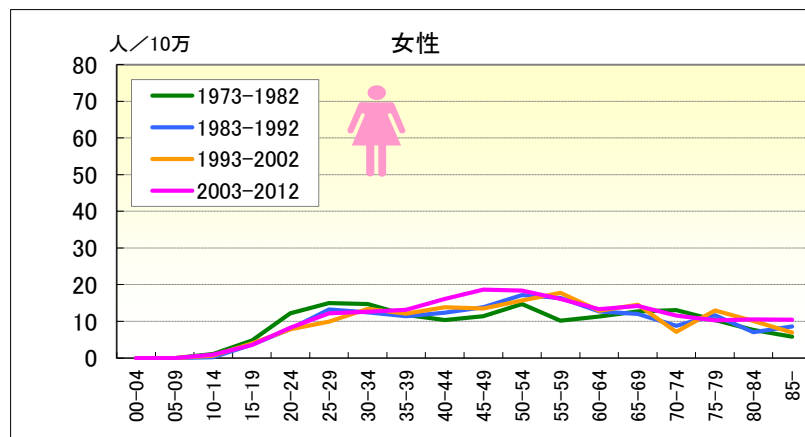
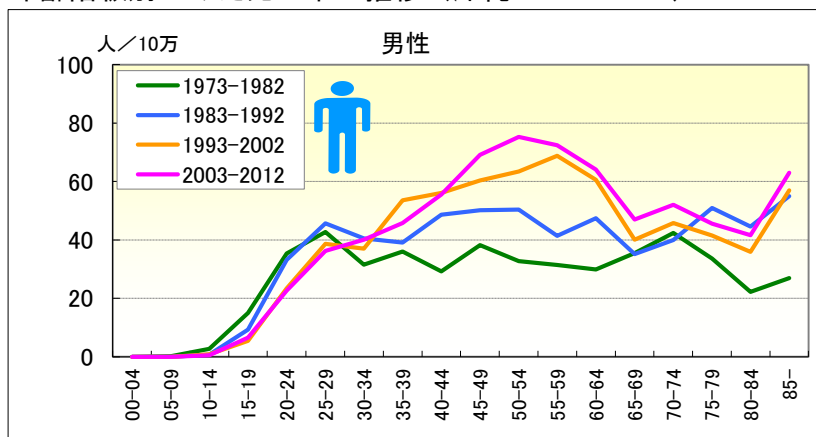


|      | 男性         |       |            |       | 女性         |       |            |       |
|------|------------|-------|------------|-------|------------|-------|------------|-------|
|      | 65-年齢調整死亡率 |       | 75-年齢調整死亡率 |       | 65-年齢調整死亡率 |       | 75-年齢調整死亡率 |       |
|      | 沖縄         | 全国    | 沖縄         | 全国    | 沖縄         | 全国    | 沖縄         | 全国    |
| 1973 | 32.38      | 67.05 | 57.06      | 90.00 | 6.92       | 55.55 | 12.28      | 73.99 |
| 1974 | 34.49      | 61.74 | 21.78      | 86.71 | 19.81      | 55.02 | 27.56      | 79.41 |
| 1975 | 15.37      | 61.28 | 32.10      | 87.40 | 9.40       | 52.66 | 6.13       | 72.81 |
| 1976 | 36.07      | 57.10 | 31.14      | 74.02 | 2.37       | 50.43 |            | 68.55 |
| 1977 | 20.63      | 57.96 |            | 79.54 | 15.47      | 48.05 | 11.13      | 62.83 |
| 1978 | 47.66      | 56.65 | 48.52      | 77.23 | 2.25       | 45.99 |            | 64.41 |
| 1979 | 35.61      | 55.27 | 35.27      | 79.52 | 21.15      | 45.19 | 17.05      | 63.08 |
| 1980 | 60.33      | 53.62 | 44.38      | 75.73 | 12.19      | 44.45 | 4.88       | 60.17 |
| 1981 | 36.39      | 50.76 | 16.03      | 68.00 | 17.63      | 40.14 | 4.72       | 54.88 |
| 1982 | 26.72      | 48.35 | 8.36       | 69.91 | 6.37       | 39.11 | 7.12       | 54.45 |
| 1983 | 45.91      | 59.19 | 54.63      | 83.99 | 10.99      | 40.70 | 8.86       | 58.85 |
| 1984 | 39.33      | 58.16 | 30.76      | 80.86 | 10.89      | 40.49 | 4.30       | 56.66 |
| 1985 | 37.51      | 54.31 | 28.11      | 75.08 | 8.70       | 38.28 | 13.88      | 53.51 |
| 1986 | 38.78      | 57.01 | 40.94      | 80.00 | 7.85       | 42.37 | 7.27       | 58.88 |
| 1987 | 53.10      | 53.64 | 89.11      | 73.70 | 10.54      | 39.04 | 14.72      | 52.93 |
| 1988 | 40.02      | 51.55 | 55.15      | 72.98 | 13.50      | 39.26 | 5.57       | 54.38 |
| 1989 | 40.31      | 49.69 | 44.47      | 68.42 | 12.07      | 37.37 | 10.70      | 50.97 |
| 1990 | 41.66      | 46.52 | 56.37      | 63.31 | 9.82       | 33.57 | 9.55       | 47.94 |
| 1991 | 34.70      | 42.07 | 23.42      | 58.71 | 13.24      | 30.74 | 19.31      | 42.28 |
| 1992 | 45.95      | 42.95 | 68.15      | 59.87 | 5.26       | 29.15 | 2.62       | 40.87 |
| 1993 | 35.89      | 39.02 | 33.88      | 51.31 | 12.98      | 26.34 | 16.11      | 36.24 |
| 1994 | 25.98      | 38.90 | 38.83      | 54.40 | 11.21      | 24.51 | 4.47       | 33.98 |
| 1995 | 50.47      | 38.53 | 47.11      | 52.30 | 6.26       | 24.50 | 9.82       | 33.30 |
| 1996 | 44.94      | 38.83 | 41.57      | 49.78 | 13.13      | 24.30 | 8.31       | 32.71 |
| 1997 | 43.23      | 41.19 | 62.04      | 51.40 | 3.72       | 23.43 | 6.92       | 31.79 |
| 1998 | 49.11      | 52.71 | 27.71      | 59.93 | 12.04      | 28.30 | 6.69       | 37.07 |
| 1999 | 35.23      | 51.07 | 32.48      | 59.60 | 14.65      | 25.96 | 8.56       | 32.90 |
| 2000 | 51.42      | 46.82 | 49.94      | 49.83 | 16.42      | 23.95 | 22.96      | 30.00 |
| 2001 | 51.99      | 46.66 | 55.02      | 49.08 | 10.88      | 21.98 | 8.29       | 26.50 |
| 2002 | 33.16      | 44.23 | 34.14      | 46.73 | 10.41      | 21.50 | 16.83      | 24.83 |
| 2003 | 54.71      | 46.70 | 69.15      | 49.48 | 14.94      | 21.92 | 12.52      | 23.70 |
| 2004 | 38.94      | 43.19 | 41.11      | 45.96 | 8.76       | 19.74 | 15.43      | 22.19 |
| 2005 | 45.31      | 42.18 | 50.16      | 42.97 | 7.64       | 18.15 | 7.13       | 21.31 |
| 2006 | 55.71      | 41.77 | 42.73      | 42.68 | 17.13      | 18.97 | 15.73      | 20.97 |
| 2007 | 39.78      | 45.23 | 39.64      | 46.02 | 6.94       | 19.74 | 5.03       | 20.46 |
| 2008 | 51.75      | 41.99 | 40.81      | 42.52 | 20.12      | 18.93 | 13.58      | 20.06 |
| 2009 | 48.64      | 42.01 | 58.31      | 42.38 | 16.27      | 18.45 | 13.06      | 19.10 |
| 2010 | 47.52      | 39.91 | 28.72      | 40.50 | 8.37       | 18.32 | 13.15      | 18.84 |
| 2011 | 56.29      | 38.28 | 55.94      | 38.65 | 15.63      | 18.34 | 8.24       | 19.25 |
| 2012 | 47.15      | 36.96 | 49.50      | 38.54 | 5.61       | 16.82 | 1.89       | 17.15 |



# 自殺

## ● 年齢階級別にみた死亡率の推移（沖縄：1973-2012）

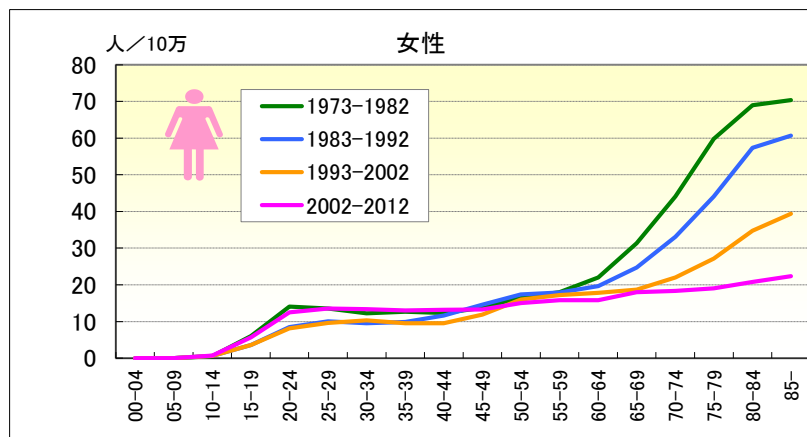
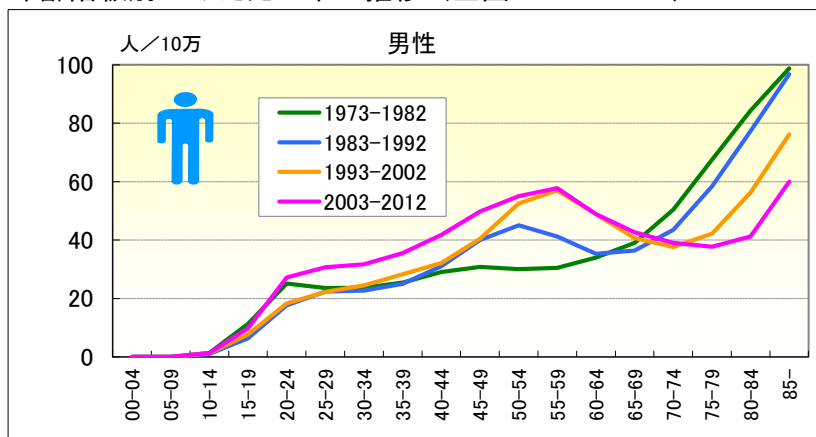


## ● 年齢階級別、性別\*期間別死亡率（沖縄：1973-2012年）

|           |           | 総数    | 00-04 | 05-09 | 10-14 | 15-19 | 20-24 | 25-29 | 30-34 | 35-39 | 40-44 | 45-49 | 50-54 | 55-59 | 60-64 | 65-69 | 70-74 | 75-79 | 80-84 | 85-   |
|-----------|-----------|-------|-------|-------|-------|-------|-------|-------|-------|-------|-------|-------|-------|-------|-------|-------|-------|-------|-------|-------|
| 男         | 1973-1977 | 21.37 | 0.00  | 0.38  | 3.64  | 15.91 | 37.73 | 37.41 | 30.65 | 40.40 | 26.61 | 38.98 | 26.88 | 33.87 | 25.42 | 32.08 | 21.83 | 36.66 | 20.48 | 13.00 |
|           | 1978-1982 | 23.27 | 0.00  | 0.00  | 1.84  | 14.03 | 32.68 | 47.20 | 32.12 | 31.38 | 31.76 | 37.57 | 36.85 | 29.31 | 33.84 | 38.30 | 59.63 | 30.96 | 23.69 | 36.64 |
|           | 1973-1982 | 22.35 | 0.00  | 0.18  | 2.74  | 15.00 | 35.35 | 42.69 | 31.49 | 35.99 | 29.23 | 38.19 | 32.70 | 31.38 | 29.88 | 35.41 | 42.37 | 33.57 | 22.20 | 26.86 |
|           | 1983-1987 | 30.29 | 0.00  | 0.00  | 0.70  | 15.84 | 35.44 | 44.46 | 44.78 | 37.10 | 60.16 | 56.27 | 51.19 | 40.53 | 48.36 | 39.58 | 39.21 | 56.00 | 38.60 | 48.92 |
|           | 1988-1992 | 27.29 | 0.00  | 0.00  | 0.74  | 3.05  | 30.82 | 47.10 | 35.66 | 40.88 | 39.38 | 43.81 | 49.52 | 42.01 | 46.78 | 31.50 | 40.57 | 46.72 | 49.30 | 59.61 |
|           | 1983-1992 | 28.77 | 0.00  | 0.00  | 0.72  | 9.24  | 33.12 | 45.68 | 40.46 | 39.12 | 48.61 | 50.17 | 50.33 | 41.37 | 47.45 | 35.16 | 39.94 | 50.94 | 44.59 | 54.94 |
|           | 1993-1997 | 29.49 | 0.00  | 0.00  | 0.78  | 3.94  | 20.39 | 36.78 | 32.54 | 49.25 | 45.62 | 43.41 | 53.57 | 66.72 | 45.61 | 34.17 | 41.95 | 46.34 | 37.68 | 54.58 |
|           | 1998-2002 | 40.16 | 0.00  | 0.00  | 0.83  | 6.97  | 26.51 | 40.32 | 41.38 | 58.16 | 67.36 | 74.73 | 71.12 | 70.85 | 74.29 | 44.58 | 48.62 | 37.56 | 34.45 | 58.88 |
|           | 1993-2002 | 34.92 | 0.00  | 0.00  | 0.80  | 5.43  | 23.37 | 38.65 | 37.00 | 53.57 | 56.12 | 60.32 | 63.44 | 68.76 | 60.52 | 40.06 | 45.82 | 41.49 | 35.93 | 57.00 |
|           | 2003-2007 | 40.50 | 0.00  | 0.00  | 0.00  | 5.66  | 21.28 | 35.09 | 42.28 | 47.99 | 62.76 | 73.31 | 74.24 | 77.08 | 76.06 | 44.19 | 48.18 | 48.58 | 34.21 | 69.43 |
| 2008-2012 | 38.96     | 0.00  | 0.00  | 0.93  | 7.50  | 24.15 | 37.55 | 37.61 | 43.79 | 48.32 | 64.71 | 76.30 | 68.49 | 54.96 | 49.84 | 55.44 | 43.32 | 46.87 | 57.68 |       |
| 2003-2012 | 39.72     | 0.00  | 0.00  | 0.45  | 6.55  | 22.65 | 36.27 | 40.02 | 45.75 | 55.49 | 69.13 | 75.24 | 72.37 | 64.12 | 46.93 | 52.02 | 45.57 | 41.63 | 63.01 |       |
| 女         | 1973-1977 | 8.24  | 0.00  | 0.00  | 0.75  | 5.62  | 16.01 | 15.52 | 14.30 | 11.10 | 11.57 | 11.88 | 12.88 | 6.02  | 13.93 | 12.28 | 8.25  | 13.96 | 10.04 | 4.54  |
|           | 1978-1982 | 8.13  | 0.00  | 0.00  | 1.53  | 3.84  | 7.97  | 14.52 | 15.01 | 12.38 | 9.15  | 11.05 | 16.28 | 13.72 | 9.08  | 13.14 | 17.27 | 7.44  | 5.61  | 6.74  |
|           | 1973-1982 | 8.18  | 0.00  | 0.00  | 1.13  | 4.76  | 12.16 | 14.98 | 14.70 | 11.72 | 10.32 | 11.44 | 14.74 | 10.17 | 11.33 | 12.74 | 13.07 | 10.34 | 7.63  | 5.80  |
|           | 1983-1987 | 9.01  | 0.00  | 0.00  | 0.00  | 3.77  | 9.55  | 15.95 | 11.55 | 12.08 | 10.74 | 16.15 | 21.12 | 15.06 | 16.51 | 10.40 | 8.81  | 12.64 | 6.67  | 7.57  |
|           | 1988-1992 | 8.15  | 0.00  | 0.00  | 0.38  | 3.51  | 6.34  | 10.32 | 13.47 | 10.74 | 13.71 | 11.49 | 13.40 | 17.58 | 9.47  | 13.35 | 8.69  | 10.84 | 7.39  | 9.31  |
|           | 1983-1992 | 8.57  | 0.00  | 0.00  | 0.19  | 3.64  | 7.92  | 13.21 | 12.49 | 11.36 | 12.37 | 13.88 | 17.14 | 16.40 | 12.68 | 11.99 | 8.75  | 11.67 | 7.06  | 8.57  |
|           | 1993-1997 | 8.28  | 0.00  | 0.00  | 0.41  | 4.50  | 6.91  | 7.28  | 12.73 | 10.83 | 13.40 | 8.93  | 16.48 | 17.64 | 13.37 | 11.91 | 6.48  | 9.38  | 9.39  | 7.20  |
|           | 1998-2002 | 10.22 | 0.00  | 0.00  | 0.87  | 3.42  | 8.76  | 12.36 | 14.04 | 13.46 | 14.34 | 17.30 | 15.07 | 17.90 | 12.44 | 16.88 | 7.71  | 15.95 | 10.66 | 6.80  |
|           | 1993-2002 | 9.27  | 0.00  | 0.00  | 0.63  | 3.97  | 7.81  | 9.95  | 13.40 | 12.12 | 13.86 | 13.45 | 15.70 | 17.77 | 12.89 | 14.57 | 7.15  | 12.93 | 10.07 | 6.97  |
|           | 2003-2007 | 9.99  | 0.00  | 0.00  | 0.47  | 3.19  | 9.64  | 9.89  | 13.04 | 14.21 | 14.34 | 17.43 | 15.74 | 14.59 | 11.78 | 12.69 | 8.77  | 10.73 | 11.17 | 11.84 |
| 2008-2012 | 11.48     | 0.00  | 0.00  | 1.47  | 3.93  | 6.82  | 14.58 | 12.15 | 12.19 | 17.80 | 19.99 | 21.14 | 17.37 | 14.57 | 15.87 | 14.04 | 9.93  | 9.97  | 9.24  |       |
| 2003-2012 | 10.74     | 0.00  | 0.00  | 0.96  | 3.55  | 8.29  | 12.17 | 12.61 | 13.14 | 16.10 | 18.68 | 18.40 | 16.11 | 13.32 | 14.21 | 11.54 | 10.30 | 10.51 | 10.43 |       |

# 自殺

## ● 年齢階級別にみた死亡率の推移 (全国：1973-2012)

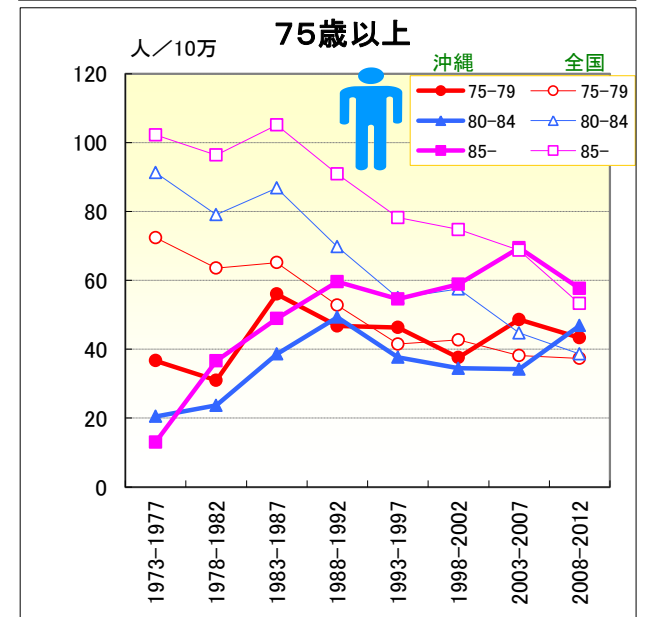
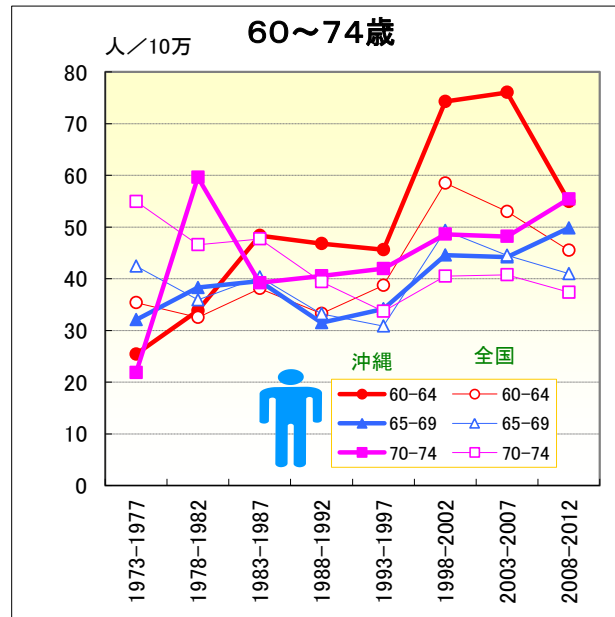
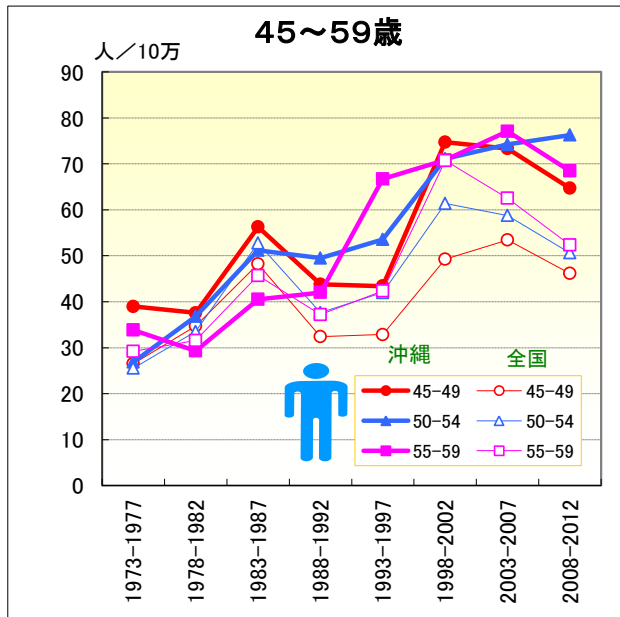
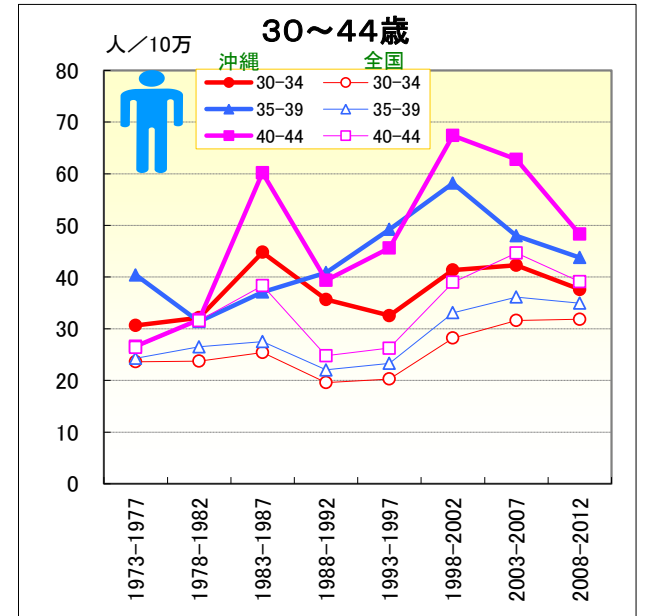
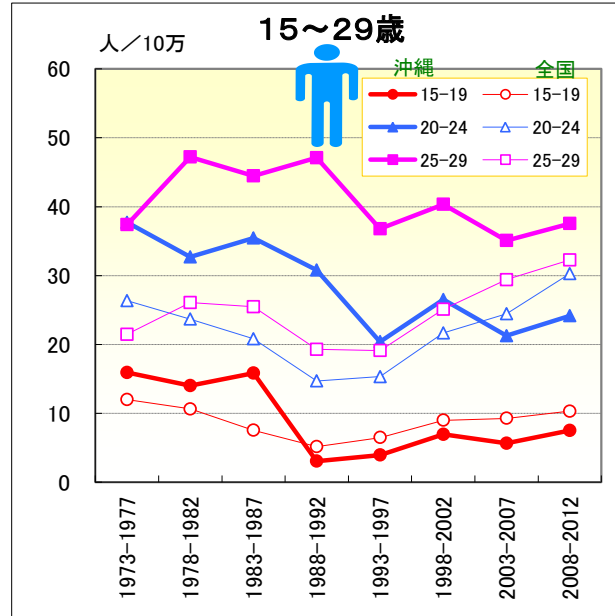
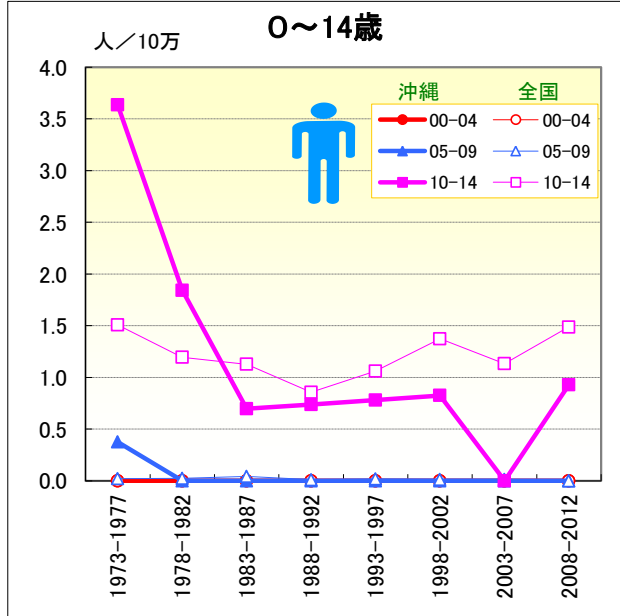


## ● 年齢階級別、性別\*期間別死亡率 (全国：1973-2012年)

|           |           | 総数    | 00-04 | 05-09 | 10-14 | 15-19 | 20-24 | 25-29 | 30-34 | 35-39 | 40-44 | 45-49 | 50-54 | 55-59 | 60-64 | 65-69 | 70-74 | 75-79 | 80-84 | 85-    |
|-----------|-----------|-------|-------|-------|-------|-------|-------|-------|-------|-------|-------|-------|-------|-------|-------|-------|-------|-------|-------|--------|
| 男         | 1973-1977 | 20.63 | 0.00  | 0.02  | 1.51  | 12.01 | 26.34 | 21.47 | 23.63 | 24.30 | 26.37 | 26.51 | 25.53 | 29.17 | 35.39 | 42.42 | 54.96 | 72.34 | 91.25 | 102.22 |
|           | 1978-1982 | 22.35 | 0.00  | 0.02  | 1.19  | 10.64 | 23.67 | 26.09 | 23.76 | 26.51 | 31.57 | 34.68 | 33.51 | 31.54 | 32.50 | 35.91 | 46.61 | 63.56 | 79.10 | 96.35  |
|           | 1973-1982 | 21.51 | 0.00  | 0.02  | 1.34  | 11.32 | 25.10 | 23.62 | 23.70 | 25.44 | 29.01 | 30.82 | 30.08 | 30.48 | 33.94 | 38.99 | 50.48 | 67.51 | 84.25 | 98.78  |
|           | 1983-1987 | 27.16 | 0.00  | 0.04  | 1.13  | 7.54  | 20.83 | 25.45 | 25.41 | 27.49 | 38.33 | 48.20 | 52.78 | 45.70 | 38.11 | 40.31 | 47.71 | 65.14 | 86.82 | 105.10 |
|           | 1988-1992 | 21.74 | 0.00  | 0.01  | 0.86  | 5.18  | 14.71 | 19.28 | 19.60 | 22.04 | 24.78 | 32.40 | 37.64 | 37.18 | 33.28 | 33.22 | 39.42 | 52.75 | 69.80 | 90.88  |
|           | 1983-1992 | 24.43 | 0.00  | 0.03  | 1.00  | 6.31  | 17.61 | 22.34 | 22.73 | 24.96 | 31.03 | 40.03 | 45.08 | 41.21 | 35.35 | 36.37 | 43.48 | 58.44 | 77.33 | 96.82  |
|           | 1993-1997 | 23.81 | 0.00  | 0.02  | 1.06  | 6.48  | 15.32 | 19.10 | 20.28 | 23.29 | 26.25 | 32.86 | 41.99 | 42.35 | 38.74 | 30.86 | 33.73 | 41.47 | 54.94 | 78.19  |
|           | 1998-2002 | 35.52 | 0.00  | 0.01  | 1.37  | 9.00  | 21.66 | 25.11 | 28.19 | 33.11 | 38.99 | 49.28 | 61.40 | 70.72 | 58.51 | 49.33 | 40.51 | 42.71 | 57.49 | 74.74  |
|           | 1993-2002 | 29.69 | 0.00  | 0.02  | 1.21  | 7.65  | 18.27 | 22.23 | 24.45 | 28.24 | 32.14 | 40.48 | 52.46 | 57.05 | 48.87 | 40.65 | 37.62 | 42.17 | 56.28 | 76.21  |
|           | 2003-2007 | 36.05 | 0.00  | 0.01  | 1.13  | 9.27  | 24.47 | 29.41 | 31.61 | 36.11 | 44.65 | 53.42 | 58.78 | 62.54 | 52.99 | 44.53 | 40.78 | 38.15 | 44.74 | 68.72  |
|           | 2008-2012 | 33.59 | 0.00  | 0.00  | 1.49  | 10.31 | 30.28 | 32.28 | 31.82 | 34.95 | 39.08 | 46.16 | 50.63 | 52.36 | 45.50 | 40.99 | 37.38 | 37.33 | 38.62 | 53.26  |
| 2003-2012 | 34.82     | 0.00  | 0.01  | 1.31  | 9.77  | 27.19 | 30.74 | 31.71 | 35.50 | 41.71 | 49.75 | 55.00 | 57.79 | 48.94 | 42.69 | 39.02 | 37.71 | 41.20 | 59.92 |        |
| 女         | 1973-1977 | 14.45 | 0.00  | 0.01  | 0.55  | 7.05  | 16.35 | 14.49 | 13.52 | 12.95 | 12.22 | 13.27 | 17.16 | 19.30 | 24.85 | 34.56 | 49.67 | 65.51 | 78.12 | 76.23  |
|           | 1978-1982 | 13.00 | 0.00  | 0.02  | 0.52  | 5.03  | 11.34 | 12.35 | 11.07 | 12.40 | 12.36 | 14.08 | 16.05 | 16.88 | 19.45 | 28.66 | 39.43 | 55.14 | 62.26 | 66.08  |
|           | 1973-1982 | 13.71 | 0.00  | 0.02  | 0.53  | 6.03  | 14.04 | 13.50 | 12.21 | 12.67 | 12.29 | 13.69 | 16.57 | 17.98 | 22.04 | 31.37 | 44.06 | 59.77 | 69.01 | 70.40  |
|           | 1983-1987 | 13.73 | 0.00  | 0.01  | 0.60  | 4.05  | 9.79  | 11.05 | 10.38 | 10.85 | 13.35 | 15.89 | 18.40 | 18.55 | 21.09 | 27.21 | 35.73 | 48.82 | 63.85 | 64.49  |
|           | 1988-1992 | 12.56 | 0.00  | 0.01  | 0.57  | 3.22  | 7.33  | 9.12  | 8.49  | 8.81  | 10.15 | 13.29 | 16.38 | 17.27 | 18.35 | 22.64 | 30.75 | 40.26 | 52.40 | 57.99  |
|           | 1983-1992 | 13.14 | 0.00  | 0.01  | 0.59  | 3.62  | 8.50  | 10.08 | 9.51  | 9.90  | 11.64 | 14.55 | 17.37 | 17.88 | 19.62 | 24.71 | 33.12 | 44.10 | 57.35 | 60.65  |
|           | 1993-1997 | 11.33 | 0.00  | 0.02  | 0.56  | 2.93  | 7.12  | 8.02  | 8.70  | 8.21  | 8.88  | 10.93 | 15.31 | 15.43 | 16.29 | 17.23 | 22.16 | 28.71 | 37.09 | 42.10  |
|           | 1998-2002 | 13.58 | 0.00  | 0.01  | 0.67  | 4.42  | 9.30  | 11.11 | 11.70 | 10.72 | 10.31 | 12.95 | 16.54 | 18.80 | 19.33 | 20.07 | 21.87 | 25.96 | 32.80 | 37.43  |
|           | 1993-2002 | 12.46 | 0.00  | 0.01  | 0.61  | 3.62  | 8.13  | 9.63  | 10.28 | 9.48  | 9.54  | 11.87 | 15.97 | 17.17 | 17.84 | 18.72 | 22.01 | 27.18 | 34.79 | 39.35  |
|           | 2003-2007 | 13.20 | 0.00  | 0.01  | 0.72  | 5.71  | 11.89 | 13.11 | 12.62 | 12.55 | 12.72 | 12.48 | 14.62 | 16.80 | 16.79 | 18.10 | 19.06 | 19.51 | 23.16 | 25.68  |
|           | 2008-2012 | 13.18 | 0.00  | 0.01  | 0.70  | 5.70  | 13.16 | 14.04 | 14.22 | 13.43 | 13.55 | 14.01 | 15.46 | 14.73 | 14.99 | 17.86 | 17.63 | 18.55 | 18.80 | 19.84  |
| 2002-2012 | 13.19     | 0.00  | 0.01  | 0.71  | 5.70  | 12.48 | 13.54 | 13.36 | 13.01 | 13.16 | 13.25 | 15.01 | 15.83 | 15.83 | 17.98 | 18.33 | 19.00 | 20.77 | 22.37 |        |

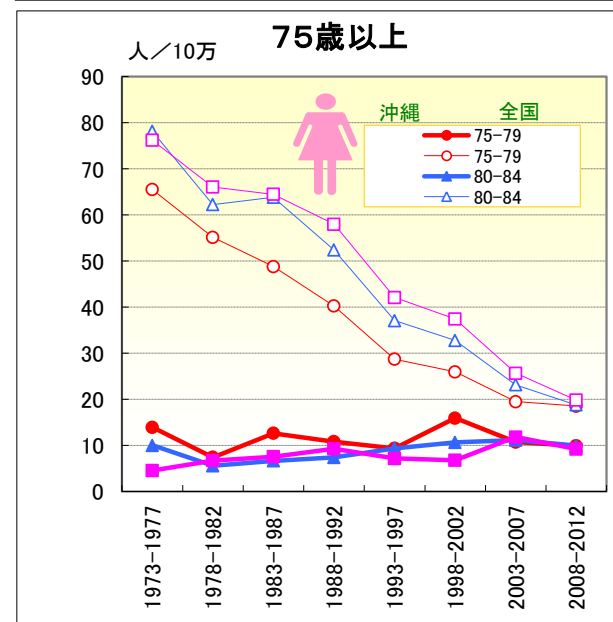
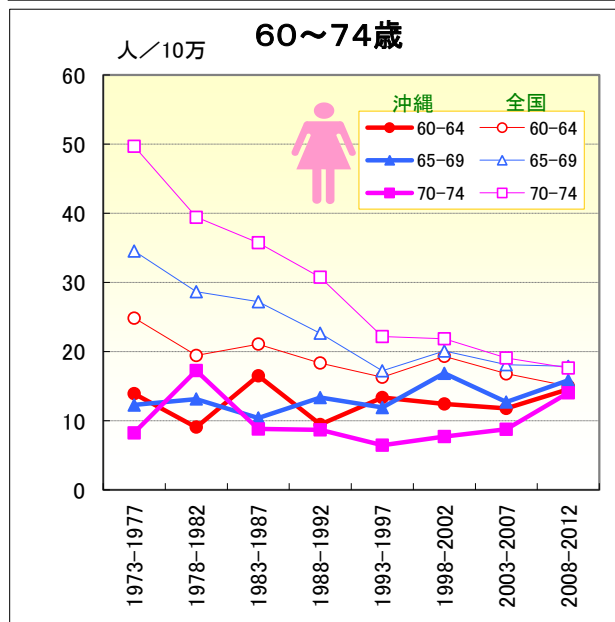
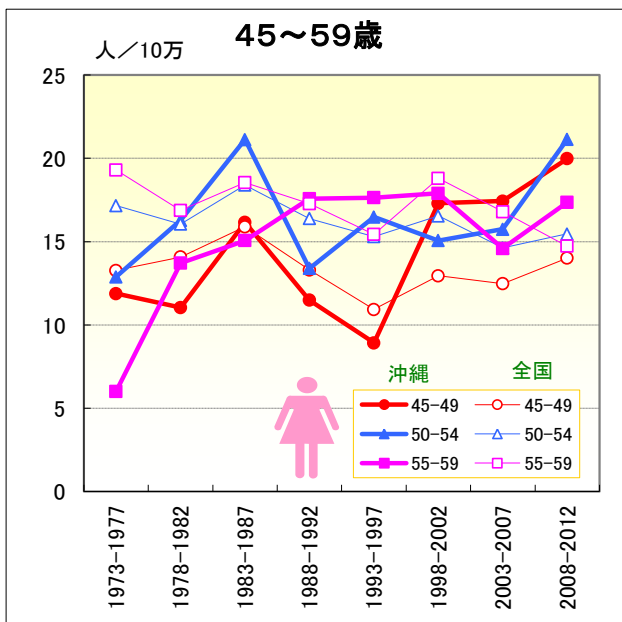
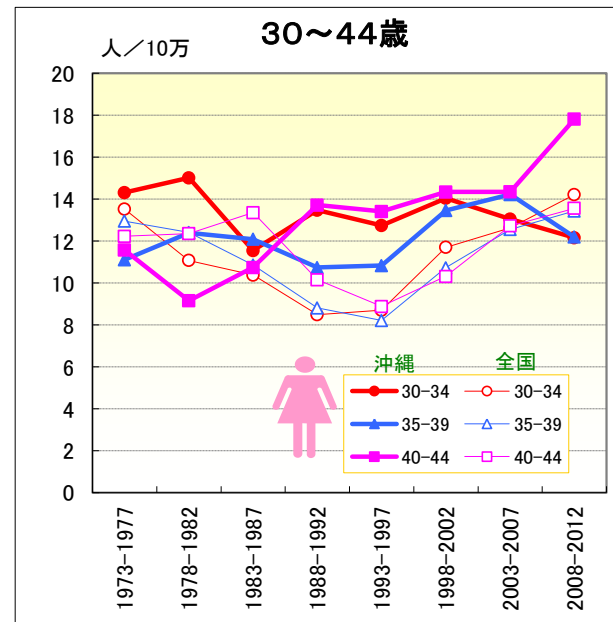
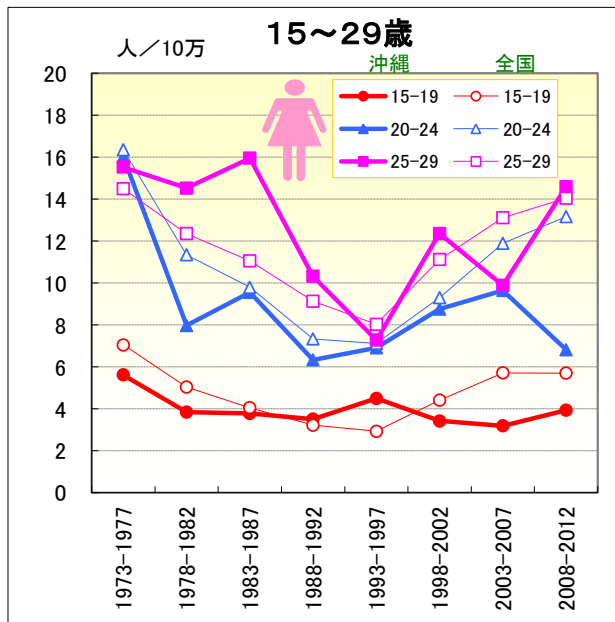
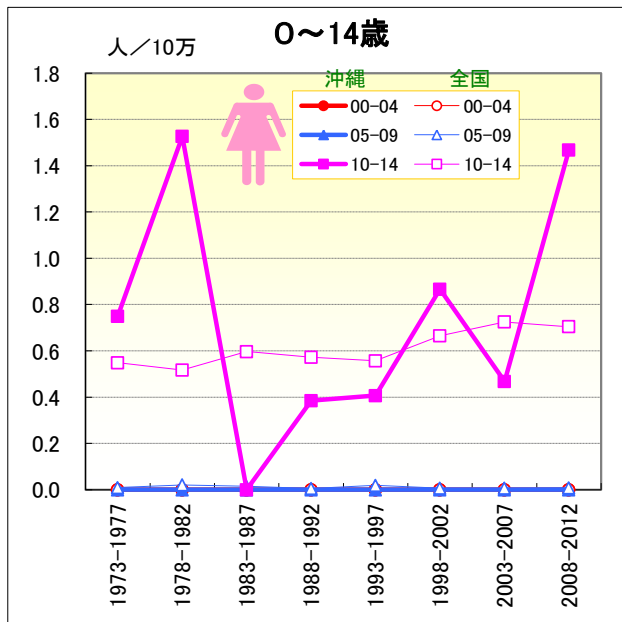
# 自殺

● 年齢階級別にみた死亡率の推移 (沖縄・全国：男1973-2012)



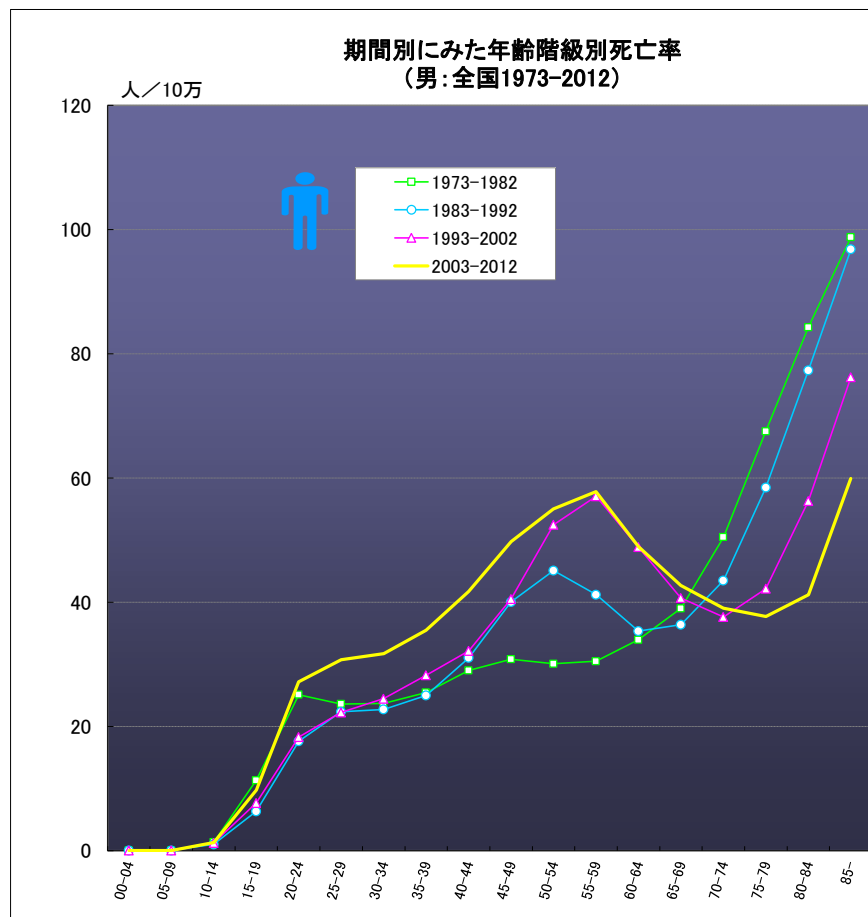
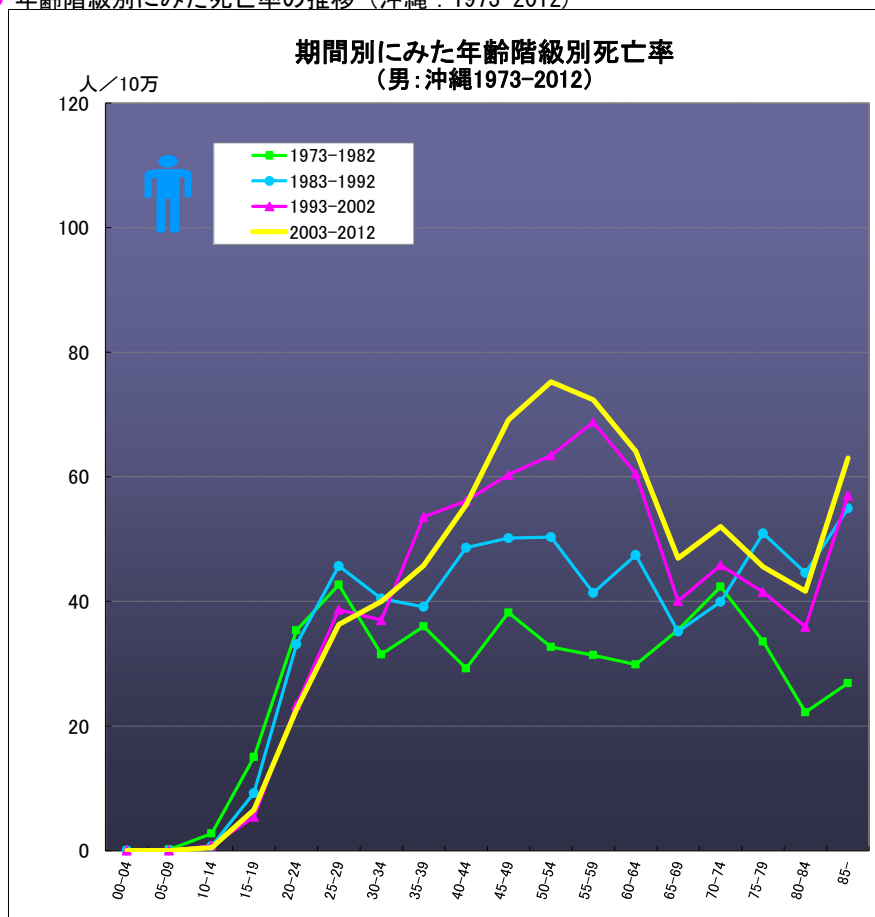
# 自殺

● 年齢階級別にみた死亡率の推移（沖縄・全国：女1973-2012）



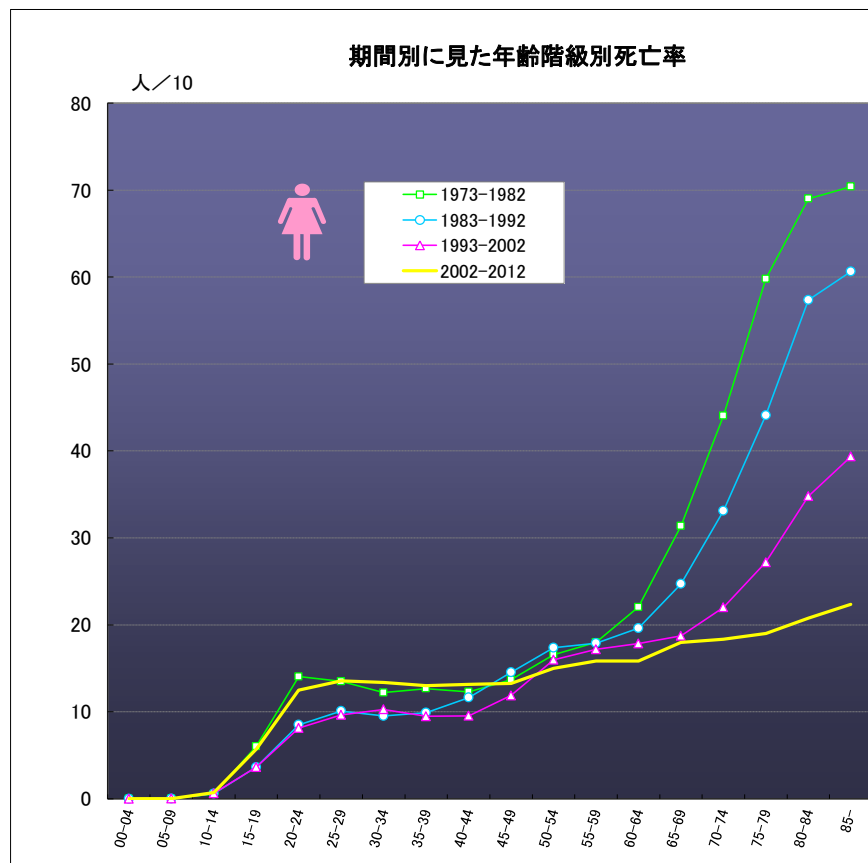
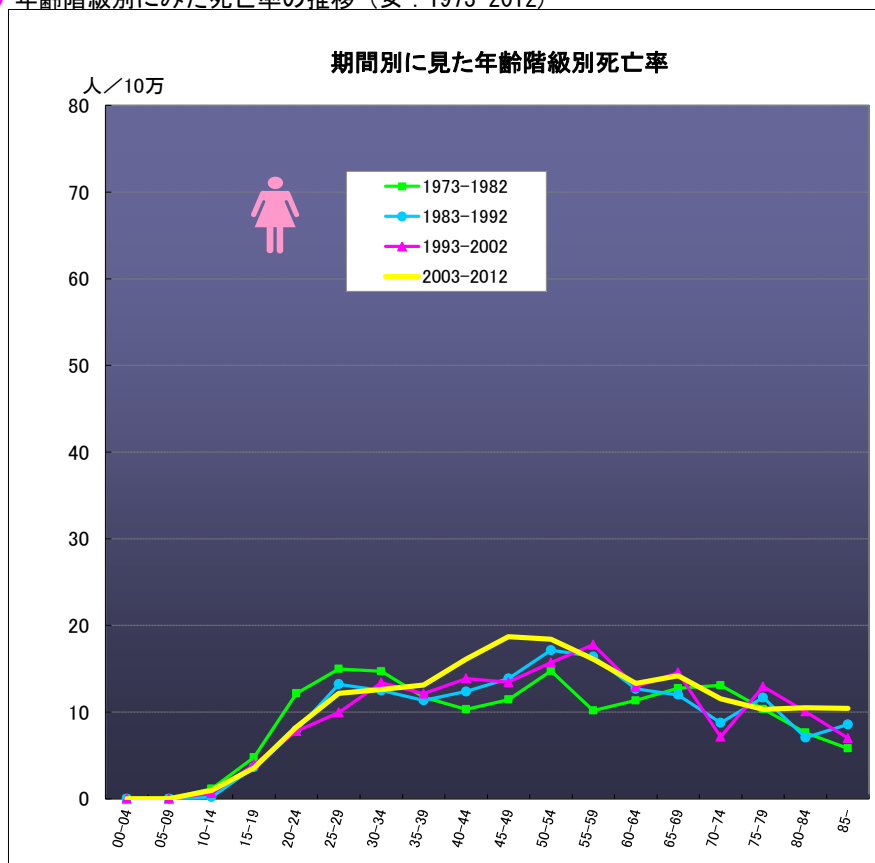
# 自殺

● 年齢階級別にみた死亡率の推移（沖縄：1973-2012）



# 自殺

● 年齢階級別にみた死亡率の推移（女：1973-2012）



自殺

● 年齢階級別、性別\*期間別死亡率（沖縄：1973-2012年）

|           | 総数        | 00-04     | 05-09 | 10-14 | 15-19 | 20-24 | 25-29 | 30-34 | 35-39 | 40-44 | 45-49 | 50-54 | 55-59 | 60-64 | 65-69 | 70-74 | 75-79 | 80-84 | 85-   |       |
|-----------|-----------|-----------|-------|-------|-------|-------|-------|-------|-------|-------|-------|-------|-------|-------|-------|-------|-------|-------|-------|-------|
| 男         | 1973-1977 | 21.37     | 0.00  | 0.38  | 3.64  | 15.91 | 37.73 | 37.41 | 30.65 | 40.40 | 26.61 | 38.98 | 26.88 | 33.87 | 25.42 | 32.08 | 21.83 | 36.66 | 20.48 | 13.00 |
|           | 1978-1982 | 23.27     | 0.00  | 0.00  | 1.84  | 14.03 | 32.68 | 47.20 | 32.12 | 31.38 | 31.76 | 37.57 | 36.85 | 29.31 | 33.84 | 38.30 | 59.63 | 30.96 | 23.69 | 36.64 |
|           | 1973-1982 | 22.35     | 0.00  | 0.18  | 2.74  | 15.00 | 35.35 | 42.69 | 31.49 | 35.99 | 29.23 | 38.19 | 32.70 | 31.38 | 29.88 | 35.41 | 42.37 | 33.57 | 22.20 | 26.86 |
|           | 1983-1987 | 30.29     | 0.00  | 0.00  | 0.70  | 15.84 | 35.44 | 44.46 | 44.78 | 37.10 | 60.16 | 56.27 | 51.19 | 40.53 | 48.36 | 39.58 | 39.21 | 56.00 | 38.60 | 48.92 |
|           | 1988-1992 | 27.29     | 0.00  | 0.00  | 0.74  | 3.05  | 30.82 | 47.10 | 35.66 | 40.88 | 39.38 | 43.81 | 49.52 | 42.01 | 46.78 | 31.50 | 40.57 | 46.72 | 49.30 | 59.61 |
|           | 1983-1992 | 28.77     | 0.00  | 0.00  | 0.72  | 9.24  | 33.12 | 45.68 | 40.46 | 39.12 | 48.61 | 50.17 | 50.33 | 41.37 | 47.45 | 35.16 | 39.94 | 50.94 | 44.59 | 54.94 |
|           | 1993-1997 | 29.49     | 0.00  | 0.00  | 0.78  | 3.94  | 20.39 | 36.78 | 32.54 | 49.25 | 45.62 | 43.41 | 53.57 | 66.72 | 45.61 | 34.17 | 41.95 | 46.34 | 37.68 | 54.58 |
|           | 1998-2002 | 40.16     | 0.00  | 0.00  | 0.83  | 6.97  | 26.51 | 40.32 | 41.38 | 58.16 | 67.36 | 74.73 | 71.12 | 70.85 | 74.29 | 44.58 | 48.62 | 37.56 | 34.45 | 58.88 |
|           | 1993-2002 | 34.92     | 0.00  | 0.00  | 0.80  | 5.43  | 23.37 | 38.65 | 37.00 | 53.57 | 56.12 | 60.32 | 63.44 | 68.76 | 60.52 | 40.06 | 45.82 | 41.49 | 35.93 | 57.00 |
|           | 2003-2007 | 40.50     | 0.00  | 0.00  | 0.00  | 5.66  | 21.28 | 35.09 | 42.28 | 47.99 | 62.76 | 73.31 | 74.24 | 77.08 | 76.06 | 44.19 | 48.18 | 48.58 | 34.21 | 69.43 |
|           | 2008-2012 | 38.96     | 0.00  | 0.00  | 0.93  | 7.50  | 24.15 | 37.55 | 37.61 | 43.79 | 48.32 | 64.71 | 76.30 | 68.49 | 54.96 | 49.84 | 55.44 | 43.32 | 46.87 | 57.68 |
|           | 2003-2012 | 39.72     | 0.00  | 0.00  | 0.45  | 6.55  | 22.65 | 36.27 | 40.02 | 45.75 | 55.49 | 69.13 | 75.24 | 72.37 | 64.12 | 46.93 | 52.02 | 45.57 | 41.63 | 63.01 |
|           | 女         | 1973-1977 | 8.24  | 0.00  | 0.00  | 0.75  | 5.62  | 16.01 | 15.52 | 14.30 | 11.10 | 11.57 | 11.88 | 12.88 | 6.02  | 13.93 | 12.28 | 8.25  | 13.96 | 10.04 |
| 1978-1982 |           | 8.13      | 0.00  | 0.00  | 1.53  | 3.84  | 7.97  | 14.52 | 15.01 | 12.38 | 9.15  | 11.05 | 16.28 | 13.72 | 9.08  | 13.14 | 17.27 | 7.44  | 5.61  | 6.74  |
| 1973-1982 |           | 8.18      | 0.00  | 0.00  | 1.13  | 4.76  | 12.16 | 14.98 | 14.70 | 11.72 | 10.32 | 11.44 | 14.74 | 10.17 | 11.33 | 12.74 | 13.07 | 10.34 | 7.63  | 5.80  |
| 1983-1987 |           | 9.01      | 0.00  | 0.00  | 0.00  | 3.77  | 9.55  | 15.95 | 11.55 | 12.08 | 10.74 | 16.15 | 21.12 | 15.06 | 16.51 | 10.40 | 8.81  | 12.64 | 6.67  | 7.57  |
| 1988-1992 |           | 8.15      | 0.00  | 0.00  | 0.38  | 3.51  | 6.34  | 10.32 | 13.47 | 10.74 | 13.71 | 11.49 | 13.40 | 17.58 | 9.47  | 13.35 | 8.69  | 10.84 | 7.39  | 9.31  |
| 1983-1992 |           | 8.57      | 0.00  | 0.00  | 0.19  | 3.64  | 7.92  | 13.21 | 12.49 | 11.36 | 12.37 | 13.88 | 17.14 | 16.40 | 12.68 | 11.99 | 8.75  | 11.67 | 7.06  | 8.57  |
| 1993-1997 |           | 8.28      | 0.00  | 0.00  | 0.41  | 4.50  | 6.91  | 7.28  | 12.73 | 10.83 | 13.40 | 8.93  | 16.48 | 17.64 | 13.37 | 11.91 | 6.48  | 9.38  | 9.39  | 7.20  |
| 1998-2002 |           | 10.22     | 0.00  | 0.00  | 0.87  | 3.42  | 8.76  | 12.36 | 14.04 | 13.46 | 14.34 | 17.30 | 15.07 | 17.90 | 12.44 | 16.88 | 7.71  | 15.95 | 10.66 | 6.80  |
| 1993-2002 |           | 9.27      | 0.00  | 0.00  | 0.63  | 3.97  | 7.81  | 9.95  | 13.40 | 12.12 | 13.86 | 13.45 | 15.70 | 17.77 | 12.89 | 14.57 | 7.15  | 12.93 | 10.07 | 6.97  |
| 2003-2007 |           | 9.99      | 0.00  | 0.00  | 0.47  | 3.19  | 9.64  | 9.89  | 13.04 | 14.21 | 14.34 | 17.43 | 15.74 | 14.59 | 11.78 | 12.69 | 8.77  | 10.73 | 11.17 | 11.84 |
| 2008-2012 |           | 11.48     | 0.00  | 0.00  | 1.47  | 3.93  | 6.82  | 14.58 | 12.15 | 12.19 | 17.80 | 19.99 | 21.14 | 17.37 | 14.57 | 15.87 | 14.04 | 9.93  | 9.97  | 9.24  |
| 2003-2012 |           | 10.74     | 0.00  | 0.00  | 0.96  | 3.55  | 8.29  | 12.17 | 12.61 | 13.14 | 16.10 | 18.68 | 18.40 | 16.11 | 13.32 | 14.21 | 11.54 | 10.30 | 10.51 | 10.43 |

自殺

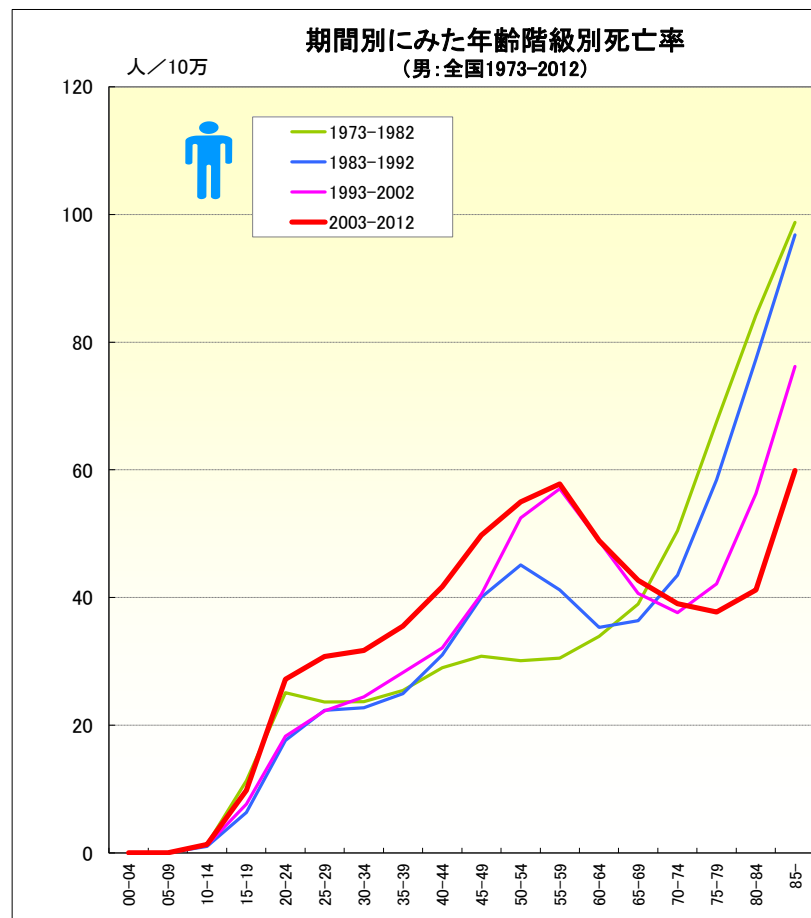
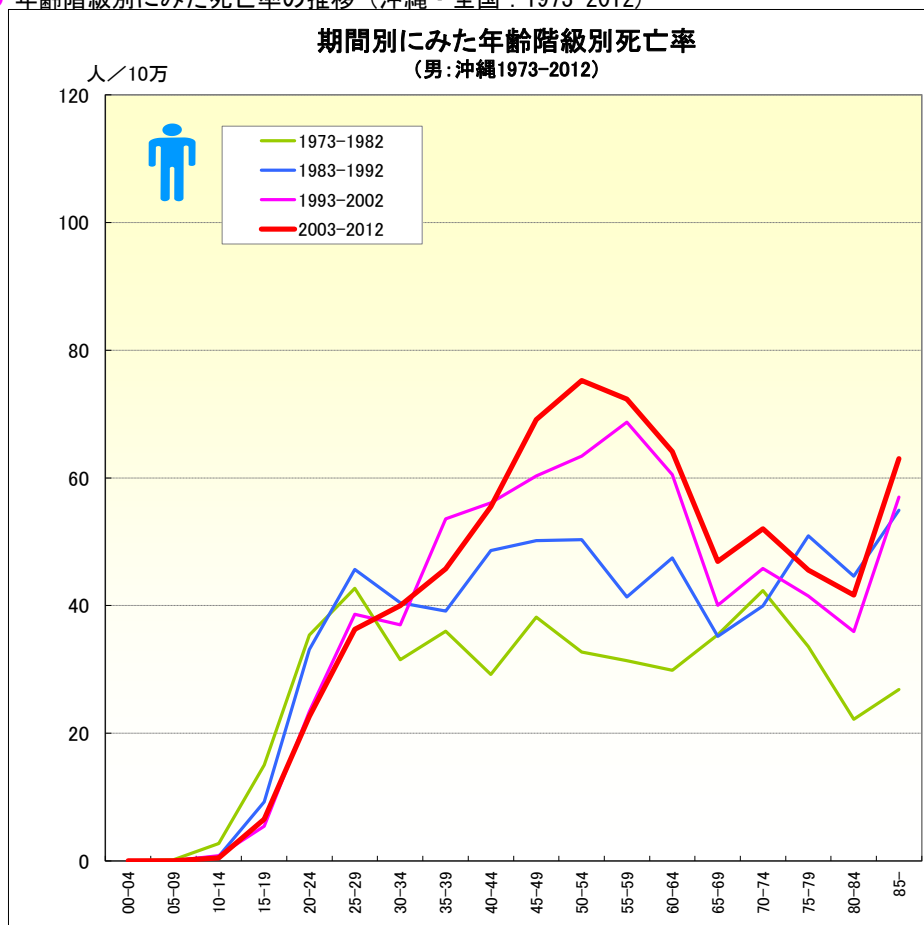
● 年齢階級別、性別\*期間別死亡率（全国：1973-2012年）

|           | 総数        | 00-04     | 05-09 | 10-14 | 15-19 | 20-24 | 25-29 | 30-34 | 35-39 | 40-44 | 45-49 | 50-54 | 55-59 | 60-64 | 65-69 | 70-74 | 75-79 | 80-84 | 85-   |        |
|-----------|-----------|-----------|-------|-------|-------|-------|-------|-------|-------|-------|-------|-------|-------|-------|-------|-------|-------|-------|-------|--------|
| 男         | 1973-1977 | 20.63     | 0.00  | 0.02  | 1.51  | 12.01 | 26.34 | 21.47 | 23.63 | 24.30 | 26.37 | 26.51 | 25.53 | 29.17 | 35.39 | 42.42 | 54.96 | 72.34 | 91.25 | 102.22 |
|           | 1978-1982 | 22.35     | 0.00  | 0.02  | 1.19  | 10.64 | 23.67 | 26.09 | 23.76 | 26.51 | 31.57 | 34.68 | 33.51 | 31.54 | 32.50 | 35.91 | 46.61 | 63.56 | 79.10 | 96.35  |
|           | 1973-1982 | 21.51     | 0.00  | 0.02  | 1.34  | 11.32 | 25.10 | 23.62 | 23.70 | 25.44 | 29.01 | 30.82 | 30.08 | 30.48 | 33.94 | 38.99 | 50.48 | 67.51 | 84.25 | 98.78  |
|           | 1983-1987 | 27.16     | 0.00  | 0.04  | 1.13  | 7.54  | 20.83 | 25.45 | 25.41 | 27.49 | 38.33 | 48.20 | 52.78 | 45.70 | 38.11 | 40.31 | 47.71 | 65.14 | 86.82 | 105.10 |
|           | 1988-1992 | 21.74     | 0.00  | 0.01  | 0.86  | 5.18  | 14.71 | 19.28 | 19.60 | 22.04 | 24.78 | 32.40 | 37.64 | 37.18 | 33.28 | 33.22 | 39.42 | 52.75 | 69.80 | 90.88  |
|           | 1983-1992 | 24.43     | 0.00  | 0.03  | 1.00  | 6.31  | 17.61 | 22.34 | 22.73 | 24.96 | 31.03 | 40.03 | 45.08 | 41.21 | 35.35 | 36.37 | 43.48 | 58.44 | 77.33 | 96.82  |
|           | 1993-1997 | 23.81     | 0.00  | 0.02  | 1.06  | 6.48  | 15.32 | 19.10 | 20.28 | 23.29 | 26.25 | 32.86 | 41.99 | 42.35 | 38.74 | 30.86 | 33.73 | 41.47 | 54.94 | 78.19  |
|           | 1998-2002 | 35.52     | 0.00  | 0.01  | 1.37  | 9.00  | 21.66 | 25.11 | 28.19 | 33.11 | 38.99 | 49.28 | 61.40 | 70.72 | 58.51 | 49.33 | 40.51 | 42.71 | 57.49 | 74.74  |
|           | 1993-2002 | 29.69     | 0.00  | 0.02  | 1.21  | 7.65  | 18.27 | 22.23 | 24.45 | 28.24 | 32.14 | 40.48 | 52.46 | 57.05 | 48.87 | 40.65 | 37.62 | 42.17 | 56.28 | 76.21  |
|           | 2003-2007 | 36.05     | 0.00  | 0.01  | 1.13  | 9.27  | 24.47 | 29.41 | 31.61 | 36.11 | 44.65 | 53.42 | 58.78 | 62.54 | 52.99 | 44.53 | 40.78 | 38.15 | 44.74 | 68.72  |
|           | 2008-2012 | 33.59     | 0.00  | 0.00  | 1.49  | 10.31 | 30.28 | 32.28 | 31.82 | 34.95 | 39.08 | 46.16 | 50.63 | 52.36 | 45.50 | 40.99 | 37.38 | 37.33 | 38.62 | 53.26  |
|           | 2003-2012 | 34.82     | 0.00  | 0.01  | 1.31  | 9.77  | 27.19 | 30.74 | 31.71 | 35.50 | 41.71 | 49.75 | 55.00 | 57.79 | 48.94 | 42.69 | 39.02 | 37.71 | 41.20 | 59.92  |
|           | 女         | 1973-1977 | 14.45 | 0.00  | 0.01  | 0.55  | 7.05  | 16.35 | 14.49 | 13.52 | 12.95 | 12.22 | 13.27 | 17.16 | 19.30 | 24.85 | 34.56 | 49.67 | 65.51 | 78.12  |
| 1978-1982 |           | 13.00     | 0.00  | 0.02  | 0.52  | 5.03  | 11.34 | 12.35 | 11.07 | 12.40 | 12.36 | 14.08 | 16.05 | 16.88 | 19.45 | 28.66 | 39.43 | 55.14 | 62.26 | 66.08  |
| 1973-1982 |           | 13.71     | 0.00  | 0.02  | 0.53  | 6.03  | 14.04 | 13.50 | 12.21 | 12.67 | 12.29 | 13.69 | 16.57 | 17.98 | 22.04 | 31.37 | 44.06 | 59.77 | 69.01 | 70.40  |
| 1983-1987 |           | 13.73     | 0.00  | 0.01  | 0.60  | 4.05  | 9.79  | 11.05 | 10.38 | 10.85 | 13.35 | 15.89 | 18.40 | 18.55 | 21.09 | 27.21 | 35.73 | 48.82 | 63.85 | 64.49  |
| 1988-1992 |           | 12.56     | 0.00  | 0.01  | 0.57  | 3.22  | 7.33  | 9.12  | 8.49  | 8.81  | 10.15 | 13.29 | 16.38 | 17.27 | 18.35 | 22.64 | 30.75 | 40.26 | 52.40 | 57.99  |
| 1983-1992 |           | 13.14     | 0.00  | 0.01  | 0.59  | 3.62  | 8.50  | 10.08 | 9.51  | 9.90  | 11.64 | 14.55 | 17.37 | 17.88 | 19.62 | 24.71 | 33.12 | 44.10 | 57.35 | 60.65  |
| 1993-1997 |           | 11.33     | 0.00  | 0.02  | 0.56  | 2.93  | 7.12  | 8.02  | 8.70  | 8.21  | 8.88  | 10.93 | 15.31 | 15.43 | 16.29 | 17.23 | 22.16 | 28.71 | 37.09 | 42.10  |
| 1998-2002 |           | 13.58     | 0.00  | 0.01  | 0.67  | 4.42  | 9.30  | 11.11 | 11.70 | 10.72 | 10.31 | 12.95 | 16.54 | 18.80 | 19.33 | 20.07 | 21.87 | 25.96 | 32.80 | 37.43  |
| 1993-2002 |           | 12.46     | 0.00  | 0.01  | 0.61  | 3.62  | 8.13  | 9.63  | 10.28 | 9.48  | 9.54  | 11.87 | 15.97 | 17.17 | 17.84 | 18.72 | 22.01 | 27.18 | 34.79 | 39.35  |
| 2003-2007 |           | 13.20     | 0.00  | 0.01  | 0.72  | 5.71  | 11.89 | 13.11 | 12.62 | 12.55 | 12.72 | 12.48 | 14.62 | 16.80 | 16.79 | 18.10 | 19.06 | 19.51 | 23.16 | 25.68  |
| 2008-2012 |           | 13.18     | 0.00  | 0.01  | 0.70  | 5.70  | 13.16 | 14.04 | 14.22 | 13.43 | 13.55 | 14.01 | 15.46 | 14.73 | 14.99 | 17.86 | 17.63 | 18.55 | 18.80 | 19.84  |
| 2003-2012 |           | 13.19     | 0.00  | 0.01  | 0.71  | 5.70  | 12.48 | 13.54 | 13.36 | 13.01 | 13.16 | 13.25 | 15.01 | 15.83 | 15.83 | 17.98 | 18.33 | 19.00 | 20.77 | 22.37  |



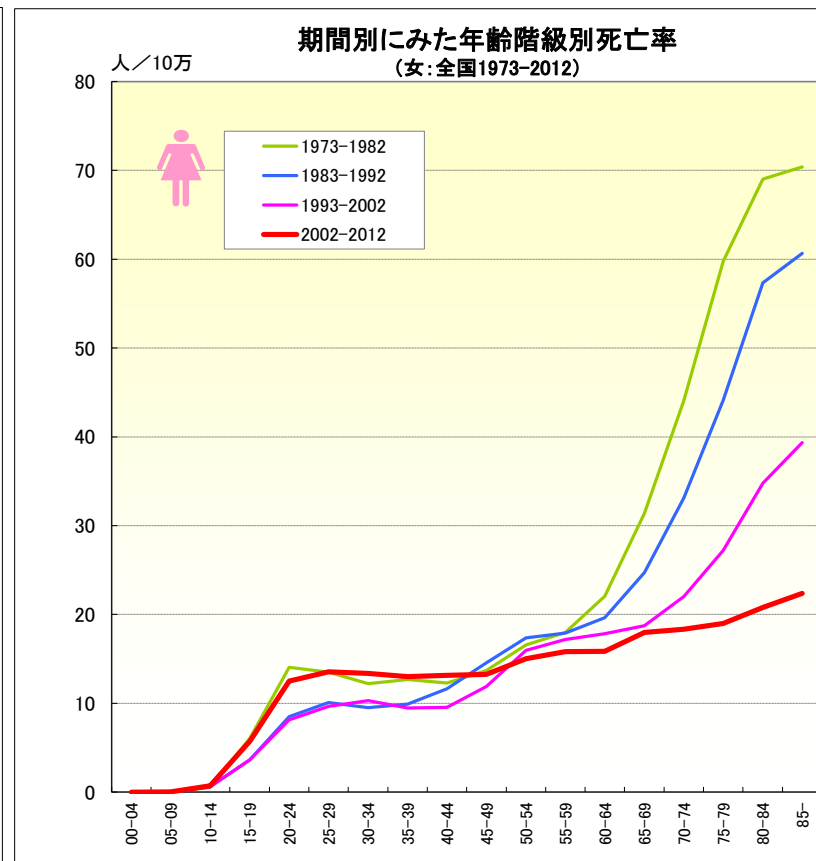
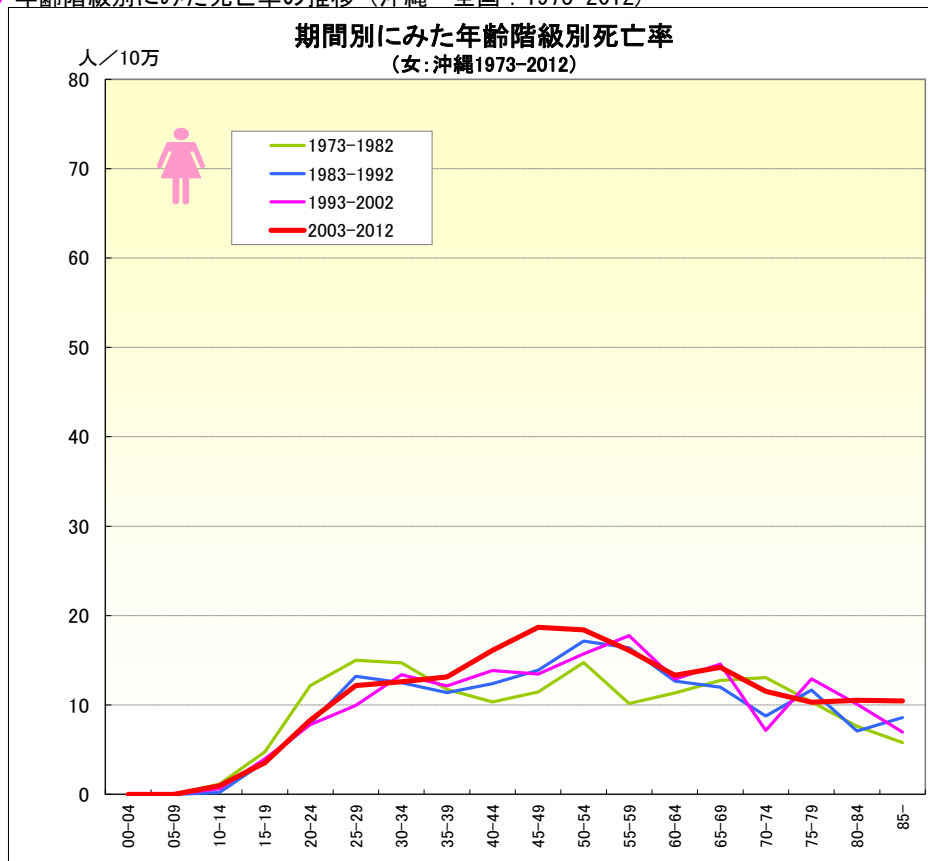
# 自殺

● 年齢階級別にみた死亡率の推移（沖縄・全国：1973-2012）



# 自殺

● 年齢階級別にみた死亡率の推移（沖縄・全国：1973-2012）



● 年齢階級別、性別\*期間別死亡率（沖縄：1973-2012年）

|           | 総数        | 00-04     | 05-09 | 10-14 | 15-19 | 20-24 | 25-29 | 30-34 | 35-39 | 40-44 | 45-49 | 50-54 | 55-59 | 60-64 | 65-69 | 70-74 | 75-79 | 80-84 | 85-   |       |
|-----------|-----------|-----------|-------|-------|-------|-------|-------|-------|-------|-------|-------|-------|-------|-------|-------|-------|-------|-------|-------|-------|
| 男         | 1973-1977 | 21.37     | 0.00  | 0.38  | 3.64  | 15.91 | 37.73 | 37.41 | 30.65 | 40.40 | 26.61 | 38.98 | 26.88 | 33.87 | 25.42 | 32.08 | 21.83 | 36.66 | 20.48 | 13.00 |
|           | 1978-1982 | 23.27     | 0.00  | 0.00  | 1.84  | 14.03 | 32.68 | 47.20 | 32.12 | 31.38 | 31.76 | 37.57 | 36.85 | 29.31 | 33.84 | 38.30 | 59.63 | 30.96 | 23.69 | 36.64 |
|           | 1973-1982 | 22.35     | 0.00  | 0.18  | 2.74  | 15.00 | 35.35 | 42.69 | 31.49 | 35.99 | 29.23 | 38.19 | 32.70 | 31.38 | 29.88 | 35.41 | 42.37 | 33.57 | 22.20 | 26.86 |
|           | 1983-1987 | 30.29     | 0.00  | 0.00  | 0.70  | 15.84 | 35.44 | 44.46 | 44.78 | 37.10 | 60.16 | 56.27 | 51.19 | 40.53 | 48.36 | 39.58 | 39.21 | 56.00 | 38.60 | 48.92 |
|           | 1988-1992 | 27.29     | 0.00  | 0.00  | 0.74  | 3.05  | 30.82 | 47.10 | 35.66 | 40.88 | 39.38 | 43.81 | 49.52 | 42.01 | 46.78 | 31.50 | 40.57 | 46.72 | 49.30 | 59.61 |
|           | 1983-1992 | 28.77     | 0.00  | 0.00  | 0.72  | 9.24  | 33.12 | 45.68 | 40.46 | 39.12 | 48.61 | 50.17 | 50.33 | 41.37 | 47.45 | 35.16 | 39.94 | 50.94 | 44.59 | 54.94 |
|           | 1993-1997 | 29.49     | 0.00  | 0.00  | 0.78  | 3.94  | 20.39 | 36.78 | 32.54 | 49.25 | 45.62 | 43.41 | 53.57 | 66.72 | 45.61 | 34.17 | 41.95 | 46.34 | 37.68 | 54.58 |
|           | 1998-2002 | 40.16     | 0.00  | 0.00  | 0.83  | 6.97  | 26.51 | 40.32 | 41.38 | 58.16 | 67.36 | 74.73 | 71.12 | 70.85 | 74.29 | 44.58 | 48.62 | 37.56 | 34.45 | 58.88 |
|           | 1993-2002 | 34.92     | 0.00  | 0.00  | 0.80  | 5.43  | 23.37 | 38.65 | 37.00 | 53.57 | 56.12 | 60.32 | 63.44 | 68.76 | 60.52 | 40.06 | 45.82 | 41.49 | 35.93 | 57.00 |
|           | 2003-2007 | 40.50     | 0.00  | 0.00  | 0.00  | 5.66  | 21.28 | 35.09 | 42.28 | 47.99 | 62.76 | 73.31 | 74.24 | 77.08 | 76.06 | 44.19 | 48.18 | 48.58 | 34.21 | 69.43 |
|           | 2008-2012 | 38.96     | 0.00  | 0.00  | 0.93  | 7.50  | 24.15 | 37.55 | 37.61 | 43.79 | 48.32 | 64.71 | 76.30 | 68.49 | 54.96 | 49.84 | 55.44 | 43.32 | 46.87 | 57.68 |
|           | 2003-2012 | 39.72     | 0.00  | 0.00  | 0.45  | 6.55  | 22.65 | 36.27 | 40.02 | 45.75 | 55.49 | 69.13 | 75.24 | 72.37 | 64.12 | 46.93 | 52.02 | 45.57 | 41.63 | 63.01 |
|           | 女         | 1973-1977 | 8.24  | 0.00  | 0.00  | 0.75  | 5.62  | 16.01 | 15.52 | 14.30 | 11.10 | 11.57 | 11.88 | 12.88 | 6.02  | 13.93 | 12.28 | 8.25  | 13.96 | 10.04 |
| 1978-1982 |           | 8.13      | 0.00  | 0.00  | 1.53  | 3.84  | 7.97  | 14.52 | 15.01 | 12.38 | 9.15  | 11.05 | 16.28 | 13.72 | 9.08  | 13.14 | 17.27 | 7.44  | 5.61  | 6.74  |
| 1973-1982 |           | 8.18      | 0.00  | 0.00  | 1.13  | 4.76  | 12.16 | 14.98 | 14.70 | 11.72 | 10.32 | 11.44 | 14.74 | 10.17 | 11.33 | 12.74 | 13.07 | 10.34 | 7.63  | 5.80  |
| 1983-1987 |           | 9.01      | 0.00  | 0.00  | 0.00  | 3.77  | 9.55  | 15.95 | 11.55 | 12.08 | 10.74 | 16.15 | 21.12 | 15.06 | 16.51 | 10.40 | 8.81  | 12.64 | 6.67  | 7.57  |
| 1988-1992 |           | 8.15      | 0.00  | 0.00  | 0.38  | 3.51  | 6.34  | 10.32 | 13.47 | 10.74 | 13.71 | 11.49 | 13.40 | 17.58 | 9.47  | 13.35 | 8.69  | 10.84 | 7.39  | 9.31  |
| 1983-1992 |           | 8.57      | 0.00  | 0.00  | 0.19  | 3.64  | 7.92  | 13.21 | 12.49 | 11.36 | 12.37 | 13.88 | 17.14 | 16.40 | 12.68 | 11.99 | 8.75  | 11.67 | 7.06  | 8.57  |
| 1993-1997 |           | 8.28      | 0.00  | 0.00  | 0.41  | 4.50  | 6.91  | 7.28  | 12.73 | 10.83 | 13.40 | 8.93  | 16.48 | 17.64 | 13.37 | 11.91 | 6.48  | 9.38  | 9.39  | 7.20  |
| 1998-2002 |           | 10.22     | 0.00  | 0.00  | 0.87  | 3.42  | 8.76  | 12.36 | 14.04 | 13.46 | 14.34 | 17.30 | 15.07 | 17.90 | 12.44 | 16.88 | 7.71  | 15.95 | 10.66 | 6.80  |
| 1993-2002 |           | 9.27      | 0.00  | 0.00  | 0.63  | 3.97  | 7.81  | 9.95  | 13.40 | 12.12 | 13.86 | 13.45 | 15.70 | 17.77 | 12.89 | 14.57 | 7.15  | 12.93 | 10.07 | 6.97  |
| 2003-2007 |           | 9.99      | 0.00  | 0.00  | 0.47  | 3.19  | 9.64  | 9.89  | 13.04 | 14.21 | 14.34 | 17.43 | 15.74 | 14.59 | 11.78 | 12.69 | 8.77  | 10.73 | 11.17 | 11.84 |
| 2008-2012 |           | 11.48     | 0.00  | 0.00  | 1.47  | 3.93  | 6.82  | 14.58 | 12.15 | 12.19 | 17.80 | 19.99 | 21.14 | 17.37 | 14.57 | 15.87 | 14.04 | 9.93  | 9.97  | 9.24  |
| 2003-2012 |           | 10.74     | 0.00  | 0.00  | 0.96  | 3.55  | 8.29  | 12.17 | 12.61 | 13.14 | 16.10 | 18.68 | 18.40 | 16.11 | 13.32 | 14.21 | 11.54 | 10.30 | 10.51 | 10.43 |

● 年齢階級別、性別\*期間別死亡率（全国：1973-2011年）

|           | 総数        | 00-04     | 05-09 | 10-14 | 15-19 | 20-24 | 25-29 | 30-34 | 35-39 | 40-44 | 45-49 | 50-54 | 55-59 | 60-64 | 65-69 | 70-74 | 75-79 | 80-84 | 85-   |        |
|-----------|-----------|-----------|-------|-------|-------|-------|-------|-------|-------|-------|-------|-------|-------|-------|-------|-------|-------|-------|-------|--------|
| 男         | 1973-1977 | 20.63     | 0.00  | 0.02  | 1.51  | 12.01 | 26.34 | 21.47 | 23.63 | 24.30 | 26.37 | 26.51 | 25.53 | 29.17 | 35.39 | 42.42 | 54.96 | 72.34 | 91.25 | 102.22 |
|           | 1978-1982 | 22.35     | 0.00  | 0.02  | 1.19  | 10.64 | 23.67 | 26.09 | 23.76 | 26.51 | 31.57 | 34.68 | 33.51 | 31.54 | 32.50 | 35.91 | 46.61 | 63.56 | 79.10 | 96.35  |
|           | 1973-1982 | 21.51     | 0.00  | 0.02  | 1.34  | 11.32 | 25.10 | 23.62 | 23.70 | 25.44 | 29.01 | 30.82 | 30.08 | 30.48 | 33.94 | 38.99 | 50.48 | 67.51 | 84.25 | 98.78  |
|           | 1983-1987 | 27.16     | 0.00  | 0.04  | 1.13  | 7.54  | 20.83 | 25.45 | 25.41 | 27.49 | 38.33 | 48.20 | 52.78 | 45.70 | 38.11 | 40.31 | 47.71 | 65.14 | 86.82 | 105.10 |
|           | 1988-1992 | 21.74     | 0.00  | 0.01  | 0.86  | 5.18  | 14.71 | 19.28 | 19.60 | 22.04 | 24.78 | 32.40 | 37.64 | 37.18 | 33.28 | 33.22 | 39.42 | 52.75 | 69.80 | 90.88  |
|           | 1983-1992 | 24.43     | 0.00  | 0.03  | 1.00  | 6.31  | 17.61 | 22.34 | 22.73 | 24.96 | 31.03 | 40.03 | 45.08 | 41.21 | 35.35 | 36.37 | 43.48 | 58.44 | 77.33 | 96.82  |
|           | 1993-1997 | 23.81     | 0.00  | 0.02  | 1.06  | 6.48  | 15.32 | 19.10 | 20.28 | 23.29 | 26.25 | 32.86 | 41.99 | 42.35 | 38.74 | 30.86 | 33.73 | 41.47 | 54.94 | 78.19  |
|           | 1998-2002 | 35.52     | 0.00  | 0.01  | 1.37  | 9.00  | 21.66 | 25.11 | 28.19 | 33.11 | 38.99 | 49.28 | 61.40 | 70.72 | 58.51 | 49.33 | 40.51 | 42.71 | 57.49 | 74.74  |
|           | 1993-2002 | 29.69     | 0.00  | 0.02  | 1.21  | 7.65  | 18.27 | 22.23 | 24.45 | 28.24 | 32.14 | 40.48 | 52.46 | 57.05 | 48.87 | 40.65 | 37.62 | 42.17 | 56.28 | 76.21  |
|           | 2003-2007 | 36.05     | 0.00  | 0.01  | 1.13  | 9.27  | 24.47 | 29.41 | 31.61 | 36.11 | 44.65 | 53.42 | 58.78 | 62.54 | 52.99 | 44.53 | 40.78 | 38.15 | 44.74 | 68.72  |
|           | 2008-2012 | 33.59     | 0.00  | 0.00  | 1.49  | 10.31 | 30.28 | 32.28 | 31.82 | 34.95 | 39.08 | 46.16 | 50.63 | 52.36 | 45.50 | 40.99 | 37.38 | 37.33 | 38.62 | 53.26  |
|           | 2003-2012 | 34.82     | 0.00  | 0.01  | 1.31  | 9.77  | 27.19 | 30.74 | 31.71 | 35.50 | 41.71 | 49.75 | 55.00 | 57.79 | 48.94 | 42.69 | 39.02 | 37.71 | 41.20 | 59.92  |
|           | 女         | 1973-1977 | 14.45 | 0.00  | 0.01  | 0.55  | 7.05  | 16.35 | 14.49 | 13.52 | 12.95 | 12.22 | 13.27 | 17.16 | 19.30 | 24.85 | 34.56 | 49.67 | 65.51 | 78.12  |
| 1978-1982 |           | 13.00     | 0.00  | 0.02  | 0.52  | 5.03  | 11.34 | 12.35 | 11.07 | 12.40 | 12.36 | 14.08 | 16.05 | 16.88 | 19.45 | 28.66 | 39.43 | 55.14 | 62.26 | 66.08  |
| 1973-1982 |           | 13.71     | 0.00  | 0.02  | 0.53  | 6.03  | 14.04 | 13.50 | 12.21 | 12.67 | 12.29 | 13.69 | 16.57 | 17.98 | 22.04 | 31.37 | 44.06 | 59.77 | 69.01 | 70.40  |
| 1983-1987 |           | 13.73     | 0.00  | 0.01  | 0.60  | 4.05  | 9.79  | 11.05 | 10.38 | 10.85 | 13.35 | 15.89 | 18.40 | 18.55 | 21.09 | 27.21 | 35.73 | 48.82 | 63.85 | 64.49  |
| 1988-1992 |           | 12.56     | 0.00  | 0.01  | 0.57  | 3.22  | 7.33  | 9.12  | 8.49  | 8.81  | 10.15 | 13.29 | 16.38 | 17.27 | 18.35 | 22.64 | 30.75 | 40.26 | 52.40 | 57.99  |
| 1983-1992 |           | 13.14     | 0.00  | 0.01  | 0.59  | 3.62  | 8.50  | 10.08 | 9.51  | 9.90  | 11.64 | 14.55 | 17.37 | 17.88 | 19.62 | 24.71 | 33.12 | 44.10 | 57.35 | 60.65  |
| 1993-1997 |           | 11.33     | 0.00  | 0.02  | 0.56  | 2.93  | 7.12  | 8.02  | 8.70  | 8.21  | 8.88  | 10.93 | 15.31 | 15.43 | 16.29 | 17.23 | 22.16 | 28.71 | 37.09 | 42.10  |
| 1998-2002 |           | 13.58     | 0.00  | 0.01  | 0.67  | 4.42  | 9.30  | 11.11 | 11.70 | 10.72 | 10.31 | 12.95 | 16.54 | 18.80 | 19.33 | 20.07 | 21.87 | 25.96 | 32.80 | 37.43  |
| 1993-2002 |           | 12.46     | 0.00  | 0.01  | 0.61  | 3.62  | 8.13  | 9.63  | 10.28 | 9.48  | 9.54  | 11.87 | 15.97 | 17.17 | 17.84 | 18.72 | 22.01 | 27.18 | 34.79 | 39.35  |
| 2003-2007 |           | 13.20     | 0.00  | 0.01  | 0.72  | 5.71  | 11.89 | 13.11 | 12.62 | 12.55 | 12.72 | 12.48 | 14.62 | 16.80 | 16.79 | 18.10 | 19.06 | 19.51 | 23.16 | 25.68  |
| 2008-2012 |           | 13.18     | 0.00  | 0.01  | 0.70  | 5.70  | 13.16 | 14.04 | 14.22 | 13.43 | 13.55 | 14.01 | 15.46 | 14.73 | 14.99 | 17.86 | 17.63 | 18.55 | 18.80 | 19.84  |
| 2003-2012 |           | 13.19     | 0.00  | 0.01  | 0.71  | 5.70  | 12.48 | 13.54 | 13.36 | 13.01 | 13.16 | 13.25 | 15.01 | 15.83 | 15.83 | 17.98 | 18.33 | 19.00 | 20.77 | 22.37  |

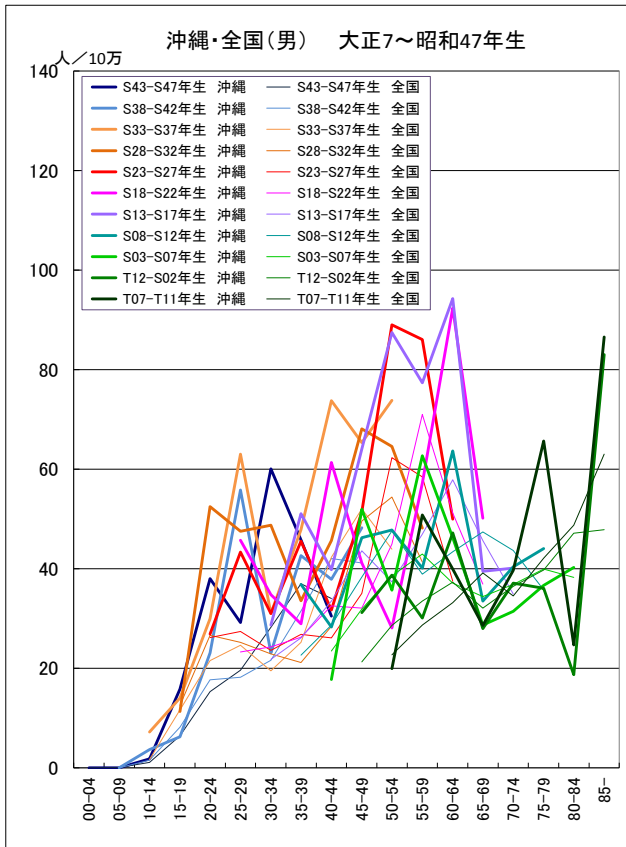




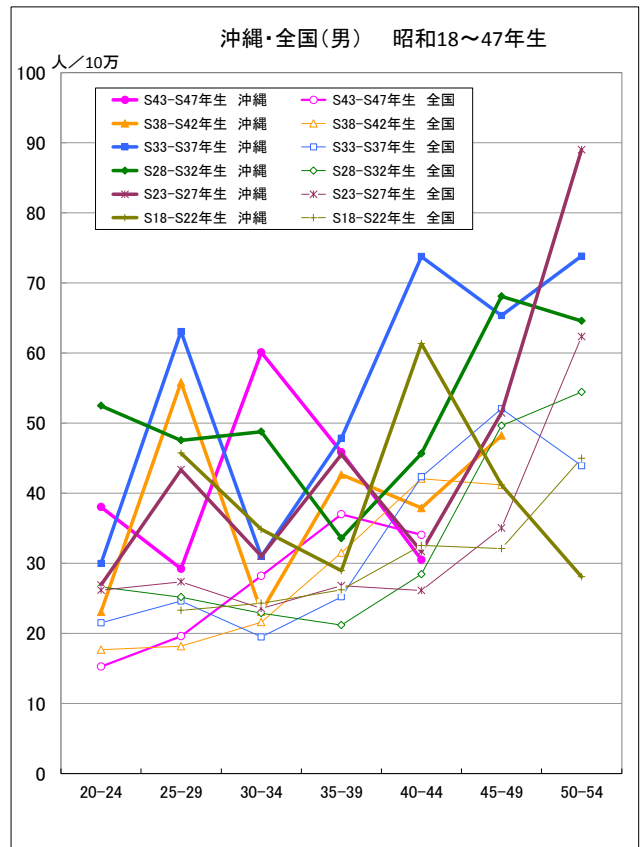


出生コホート別死亡率の推移 (男) -1973-2012-

● 自殺

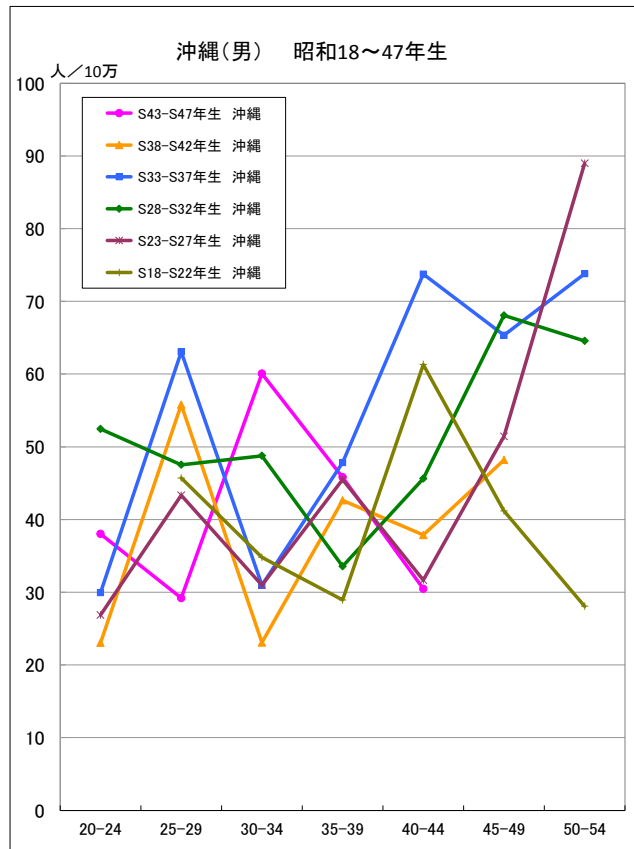


● 自殺

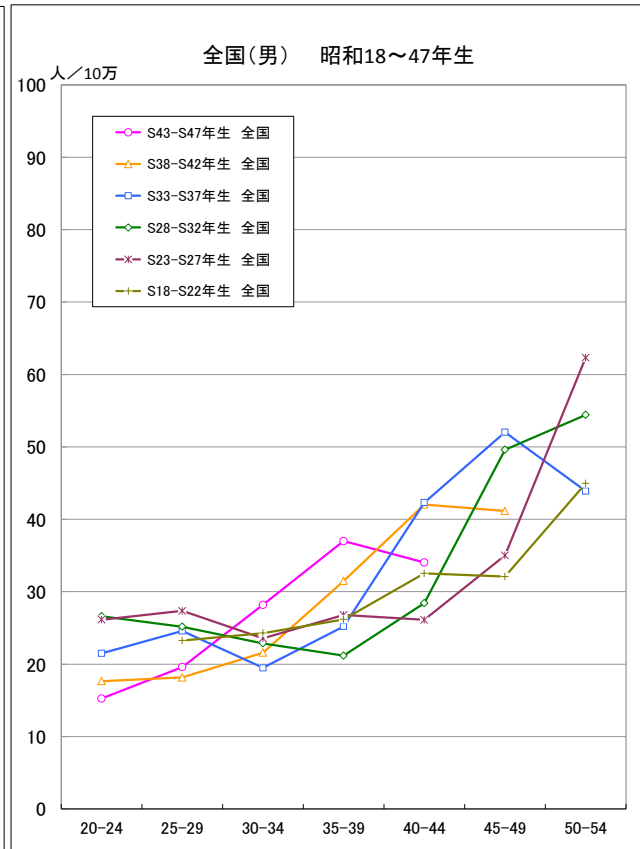


出生コホート別死亡率の推移 (男) -1973-2012-

● 自殺



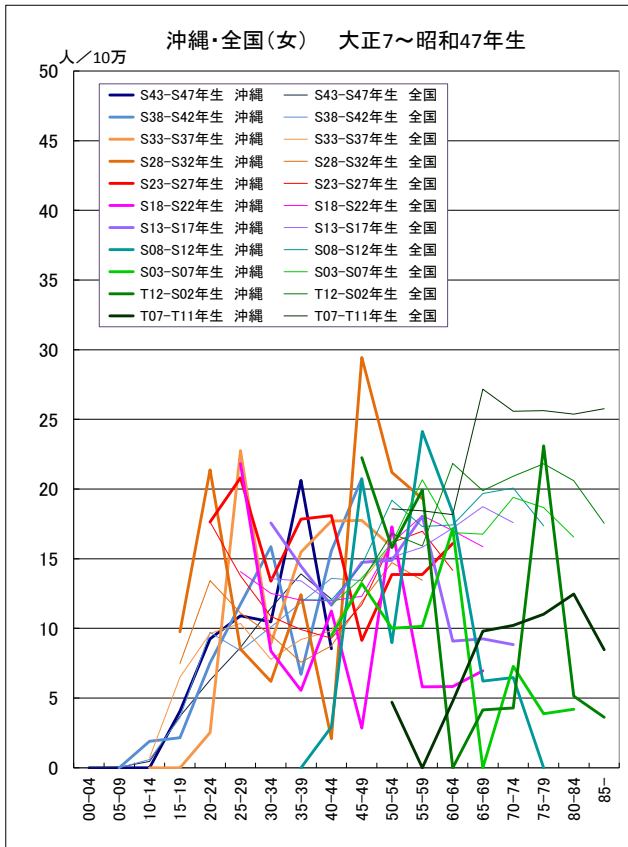
● 自殺



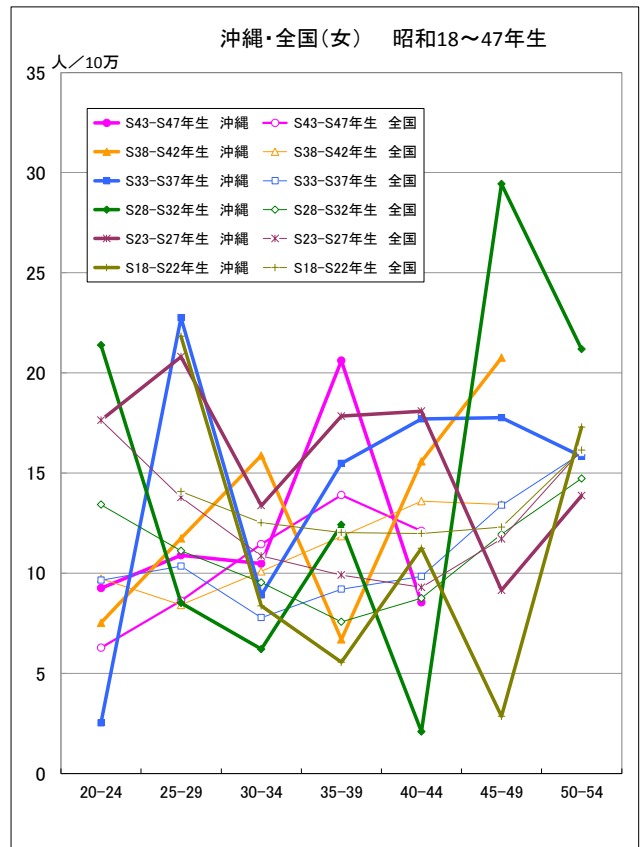


出生コホート別死亡率の推移 (女) -1973-2012-

● 自殺

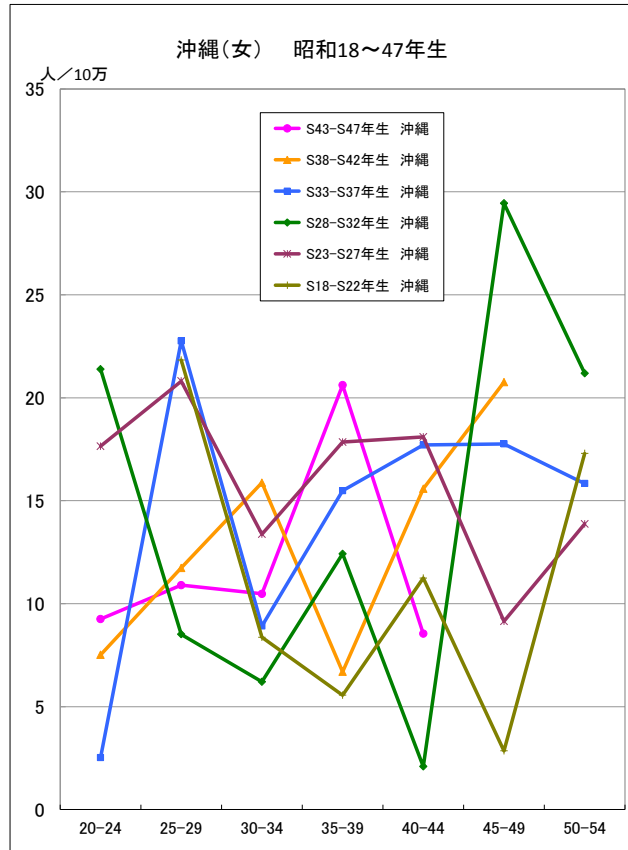


● 自殺

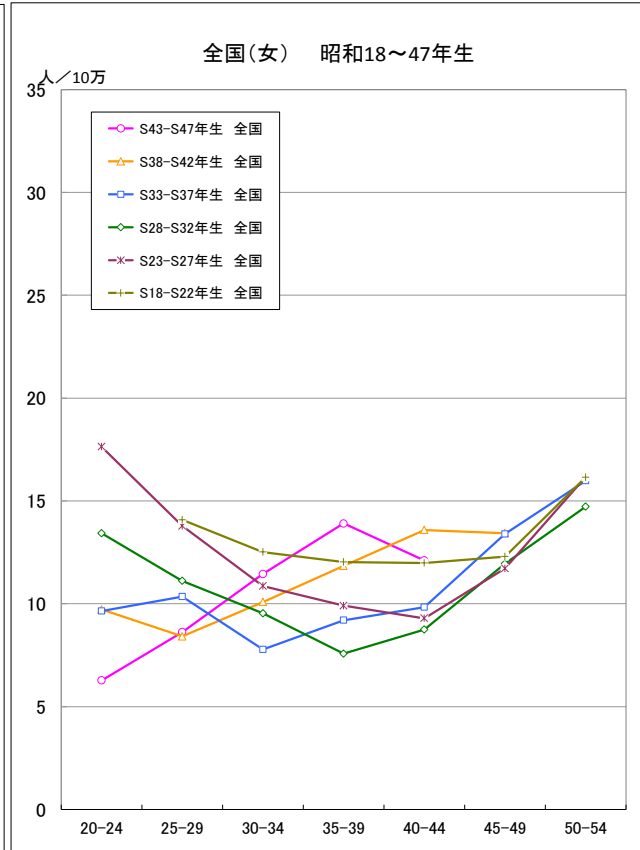


出生コホート別死亡率の推移 (女) -1973-2012-

● 自殺

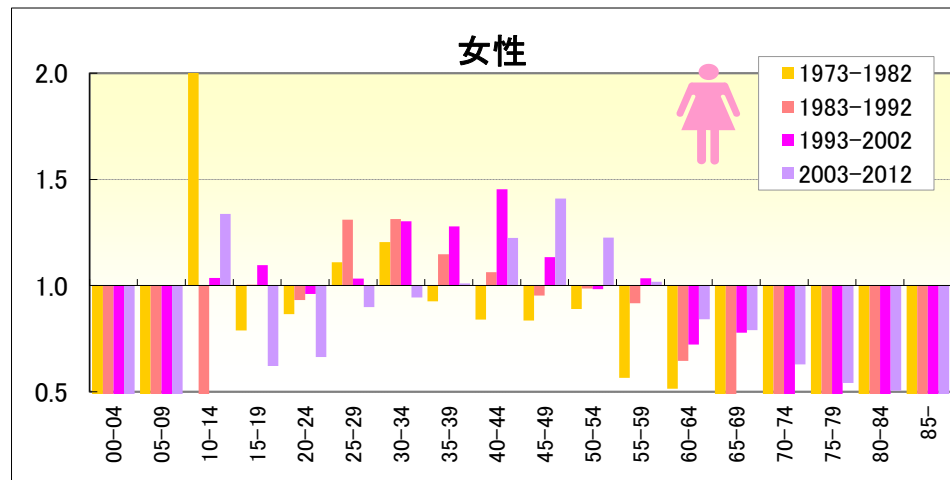
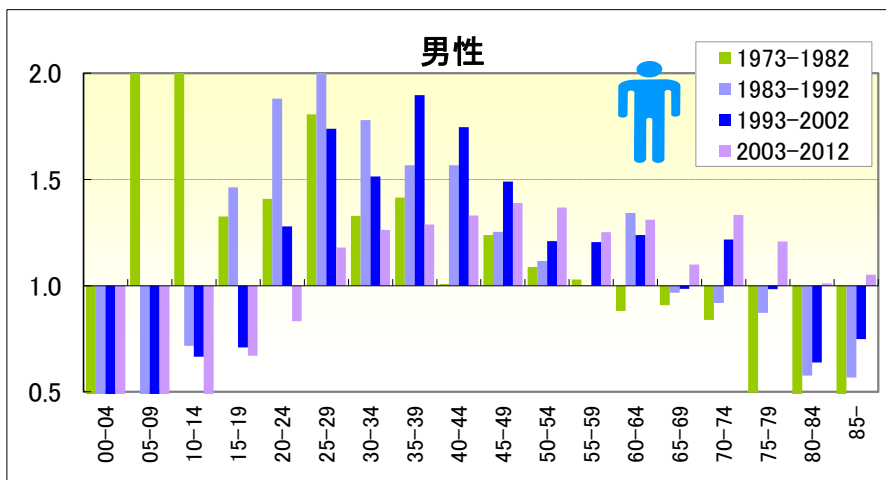


● 自殺



# 自殺

● 期間（10年）別にみた年齢階級別死亡率比の推移（沖縄／全国：1973-2012）

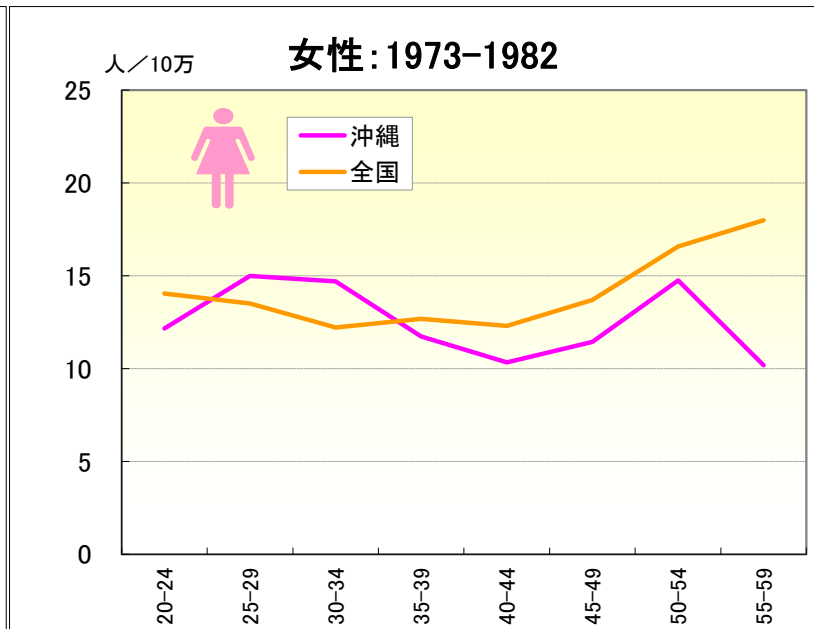
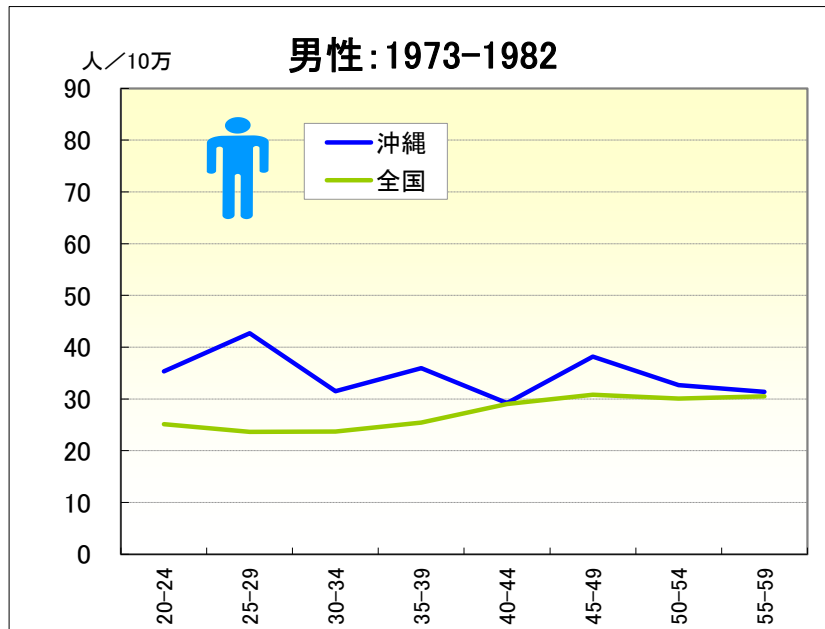


● 年齢階級別、性別\*期間別死亡率比（沖縄：1973-2012年）

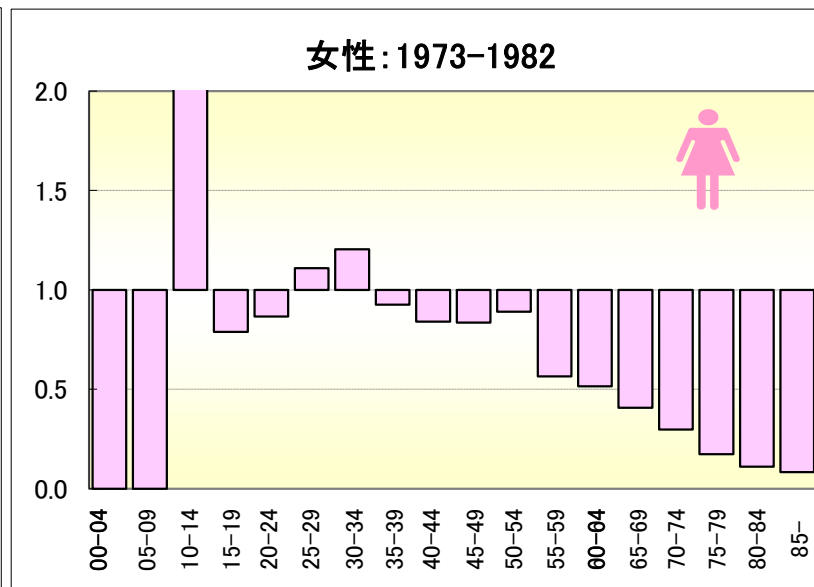
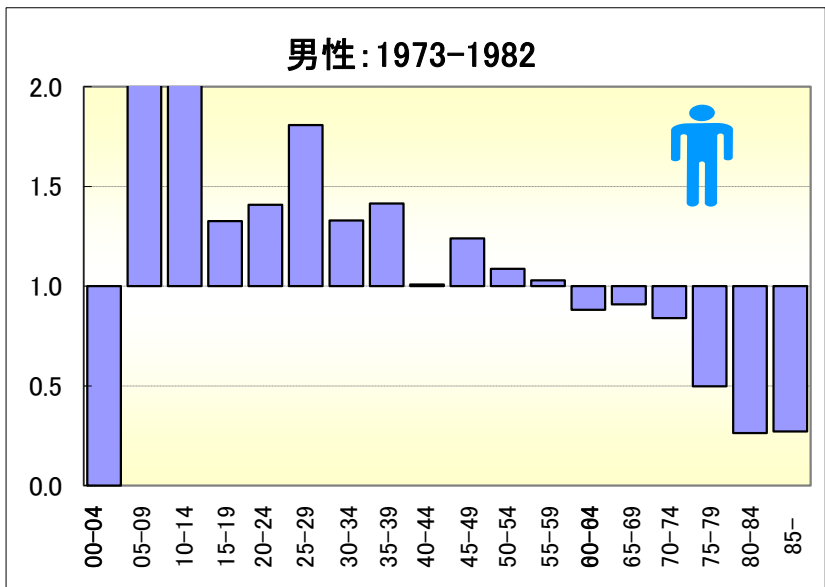
|           |           | 総数      | 00-04   | 05-09 | 10-14 | 15-19 | 20-24 | 25-29 | 30-34 | 35-39 | 40-44 | 45-49 | 50-54 | 55-59 | 60-64 | 65-69 | 70-74 | 75-79 | 80-84 | 85-  |
|-----------|-----------|---------|---------|-------|-------|-------|-------|-------|-------|-------|-------|-------|-------|-------|-------|-------|-------|-------|-------|------|
| 男         | 1973-1977 | 1.04    |         | 17.32 | 2.41  | 1.33  | 1.43  | 1.74  | 1.30  | 1.66  | 1.01  | 1.47  | 1.05  | 1.16  | 0.72  | 0.76  | 0.40  | 0.51  | 0.22  | 0.13 |
|           | 1978-1982 | 1.04    |         | 0.00  | 1.54  | 1.32  | 1.38  | 1.81  | 1.35  | 1.18  | 1.01  | 1.08  | 1.10  | 0.93  | 1.04  | 1.07  | 1.28  | 0.49  | 0.30  | 0.38 |
|           | 1973-1982 | 1.04    | #DIV/0! | 7.90  | 2.04  | 1.33  | 1.41  | 1.81  | 1.33  | 1.41  | 1.01  | 1.24  | 1.09  | 1.03  | 0.88  | 0.91  | 0.84  | 0.50  | 0.26  | 0.27 |
|           | 1983-1987 | 1.12    |         | 0.00  | 0.62  | 2.10  | 1.70  | 1.75  | 1.76  | 1.35  | 1.57  | 1.17  | 0.97  | 0.89  | 1.27  | 0.98  | 0.82  | 0.86  | 0.44  | 0.47 |
|           | 1988-1992 | 1.26    |         | 0.00  | 0.86  | 0.59  | 2.09  | 2.44  | 1.82  | 1.85  | 1.59  | 1.35  | 1.32  | 1.13  | 1.41  | 0.95  | 1.03  | 0.89  | 0.71  | 0.66 |
|           | 1983-1992 | 1.18    | #DIV/0! | 0.00  | 0.72  | 1.46  | 1.88  | 2.05  | 1.78  | 1.57  | 1.57  | 1.25  | 1.12  | 1.00  | 1.34  | 0.97  | 0.92  | 0.87  | 0.58  | 0.57 |
|           | 1993-1997 | 1.24    |         | 0.00  | 0.74  | 0.61  | 1.33  | 1.93  | 1.60  | 2.11  | 1.74  | 1.32  | 1.28  | 1.58  | 1.18  | 1.11  | 1.24  | 1.12  | 0.69  | 0.70 |
|           | 1998-2002 | 1.13    |         | 0.00  | 0.60  | 0.77  | 1.22  | 1.61  | 1.47  | 1.76  | 1.73  | 1.52  | 1.16  | 1.00  | 1.27  | 0.90  | 1.20  | 0.88  | 0.60  | 0.79 |
|           | 1993-2002 | 1.18    | #DIV/0! | 0.00  | 0.66  | 0.71  | 1.28  | 1.74  | 1.51  | 1.90  | 1.75  | 1.49  | 1.21  | 1.21  | 1.24  | 0.99  | 1.22  | 0.98  | 0.64  | 0.75 |
|           | 2003-2007 | 1.12    |         | 0.00  | 0.00  | 0.61  | 0.87  | 1.19  | 1.34  | 1.33  | 1.41  | 1.37  | 1.26  | 1.23  | 1.44  | 0.99  | 1.18  | 1.27  | 0.76  | 1.01 |
| 2008-2012 | 1.16      |         |         | 0.62  | 0.73  | 0.80  | 1.16  | 1.18  | 1.25  | 1.24  | 1.40  | 1.51  | 1.31  | 1.21  | 1.22  | 1.48  | 1.16  | 1.21  | 1.08  |      |
| 2003-2012 | 1.14      | #DIV/0! | 0.00    | 0.35  | 0.67  | 0.83  | 1.18  | 1.26  | 1.29  | 1.33  | 1.39  | 1.37  | 1.25  | 1.31  | 1.10  | 1.33  | 1.21  | 1.01  | 1.05  |      |
| 女         | 1973-1977 | 0.57    |         | 0.00  | 1.37  | 0.80  | 0.98  | 1.07  | 1.06  | 0.86  | 0.95  | 0.90  | 0.75  | 0.31  | 0.56  | 0.36  | 0.17  | 0.21  | 0.13  | 0.06 |
|           | 1978-1982 | 0.63    |         | 0.00  | 2.95  | 0.76  | 0.70  | 1.18  | 1.36  | 1.00  | 0.74  | 0.78  | 1.01  | 0.81  | 0.47  | 0.46  | 0.44  | 0.13  | 0.09  | 0.10 |
|           | 1973-1982 | 0.60    | #DIV/0! | 0.00  | 2.13  | 0.79  | 0.87  | 1.11  | 1.20  | 0.93  | 0.84  | 0.84  | 0.89  | 0.57  | 0.51  | 0.41  | 0.30  | 0.17  | 0.11  | 0.08 |
|           | 1983-1987 | 0.66    |         | 0.00  | 0.00  | 0.93  | 0.98  | 1.44  | 1.11  | 1.11  | 0.80  | 1.02  | 1.15  | 0.81  | 0.78  | 0.38  | 0.25  | 0.26  | 0.10  | 0.12 |
|           | 1988-1992 | 0.65    |         | 0.00  | 0.67  | 1.09  | 0.86  | 1.13  | 1.59  | 1.22  | 1.35  | 0.86  | 0.82  | 1.02  | 0.52  | 0.59  | 0.28  | 0.27  | 0.14  | 0.16 |
|           | 1983-1992 | 0.65    | #DIV/0! | 0.00  | 0.32  | 1.00  | 0.93  | 1.31  | 1.31  | 1.15  | 1.06  | 0.95  | 0.99  | 0.92  | 0.65  | 0.49  | 0.26  | 0.26  | 0.12  | 0.14 |
|           | 1993-1997 | 0.73    |         | 0.00  | 0.73  | 1.53  | 0.97  | 0.91  | 1.46  | 1.32  | 1.51  | 0.82  | 1.08  | 1.14  | 0.82  | 0.69  | 0.29  | 0.33  | 0.25  | 0.17 |
|           | 1998-2002 | 0.75    |         | 0.00  | 1.30  | 0.77  | 0.94  | 1.11  | 1.20  | 1.25  | 1.39  | 1.34  | 0.91  | 0.95  | 0.64  | 0.84  | 0.35  | 0.61  | 0.32  | 0.18 |
|           | 1993-2002 | 0.74    | #DIV/0! | 0.00  | 1.04  | 1.10  | 0.96  | 1.03  | 1.30  | 1.28  | 1.45  | 1.13  | 0.98  | 1.03  | 0.72  | 0.78  | 0.32  | 0.48  | 0.29  | 0.18 |
|           | 2003-2007 | 0.76    |         | 0.00  | 0.64  | 0.56  | 0.81  | 0.75  | 1.03  | 1.13  | 1.13  | 1.40  | 1.08  | 0.87  | 0.70  | 0.70  | 0.46  | 0.55  | 0.48  | 0.46 |
| 2008-2012 | 0.87      |         | 0.00    | 2.08  | 0.69  | 0.52  | 1.04  | 0.85  | 0.91  | 1.31  | 1.43  | 1.37  | 1.18  | 0.97  | 0.89  | 0.80  | 0.54  | 0.53  | 0.47  |      |
| 2003-2012 | 0.81      | #DIV/0! | 0.00    | 1.34  | 0.62  | 0.66  | 0.90  | 0.94  | 1.01  | 1.22  | 1.41  | 1.23  | 1.02  | 0.84  | 0.79  | 0.63  | 0.54  | 0.51  | 0.47  |      |

# 自殺

● 期間別にみた年齢階級別死亡率（沖縄、全国：1973-1982）

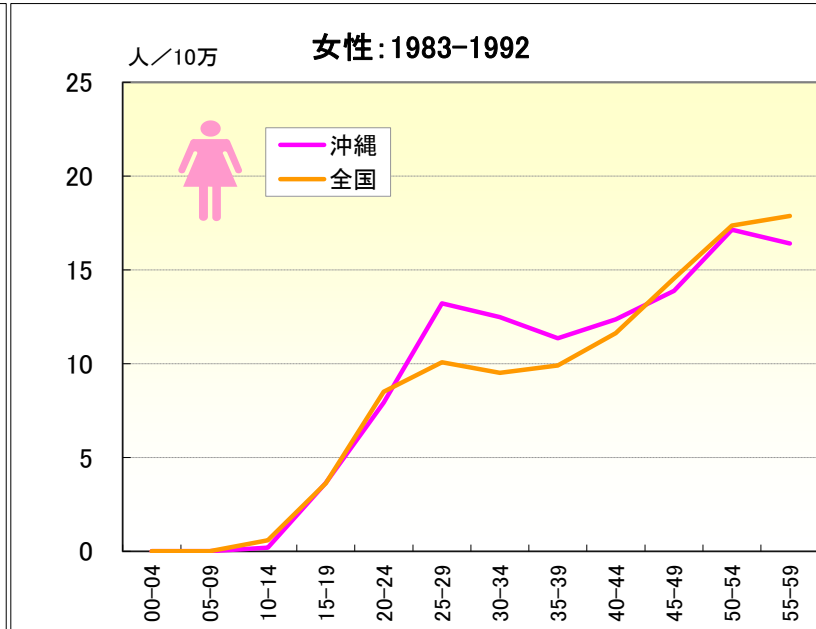
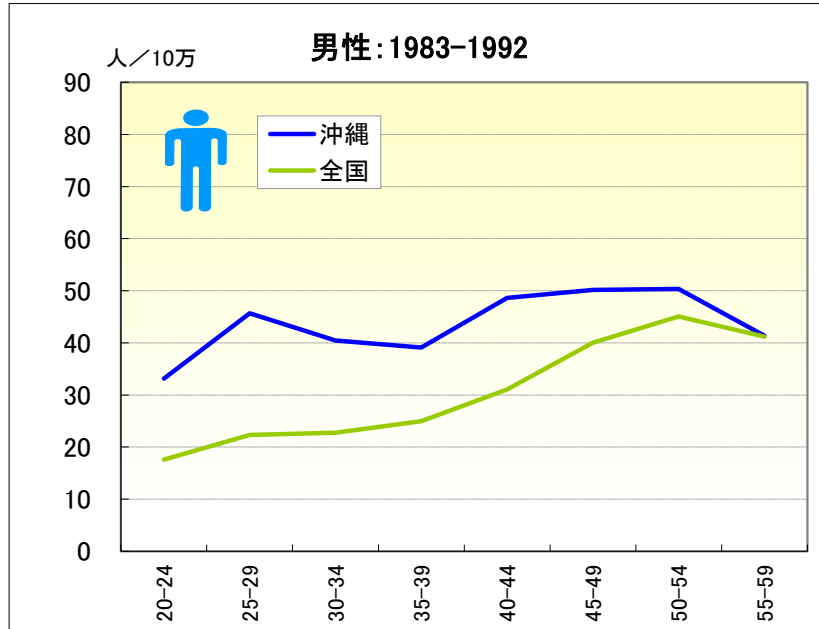


● 期間別にみた年齢階級別死亡率比（沖縄／全国：1973-1982）

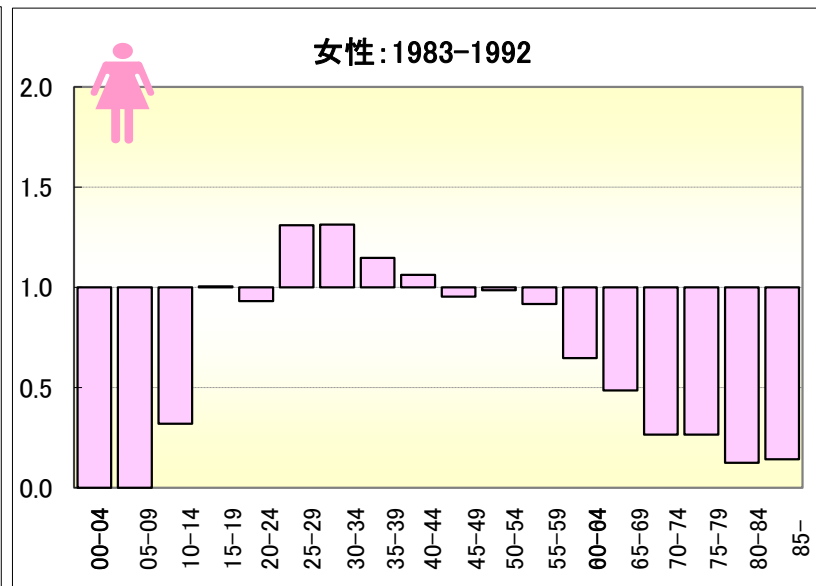
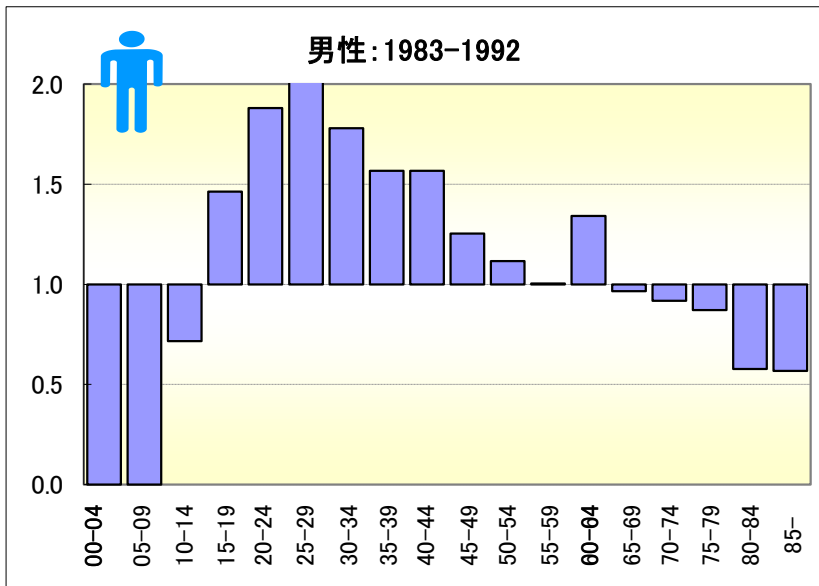


# 自殺

## ● 期間別にみた年齢階級別死亡率（沖縄、全国：1983-1992）

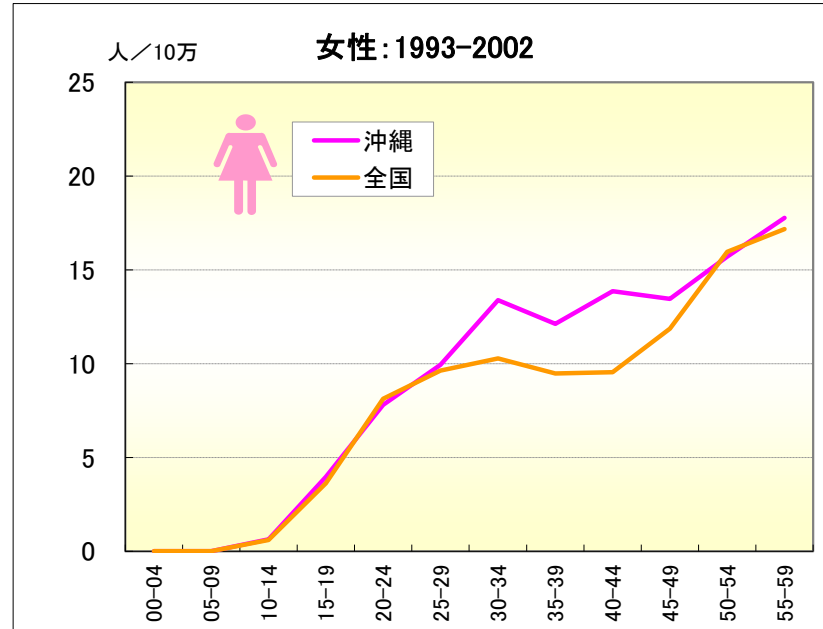
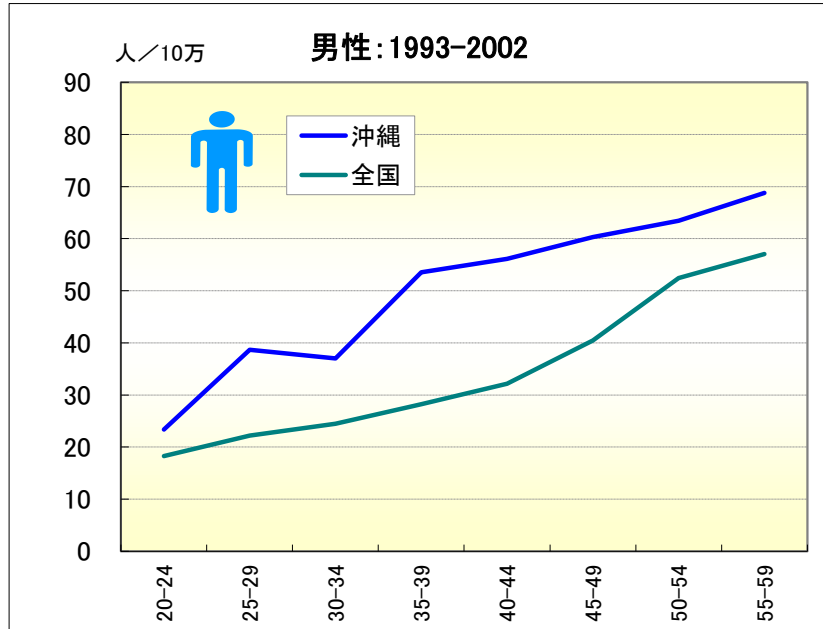


## ● 期間別にみた年齢階級別死亡率比（沖縄／全国：1983-1992）

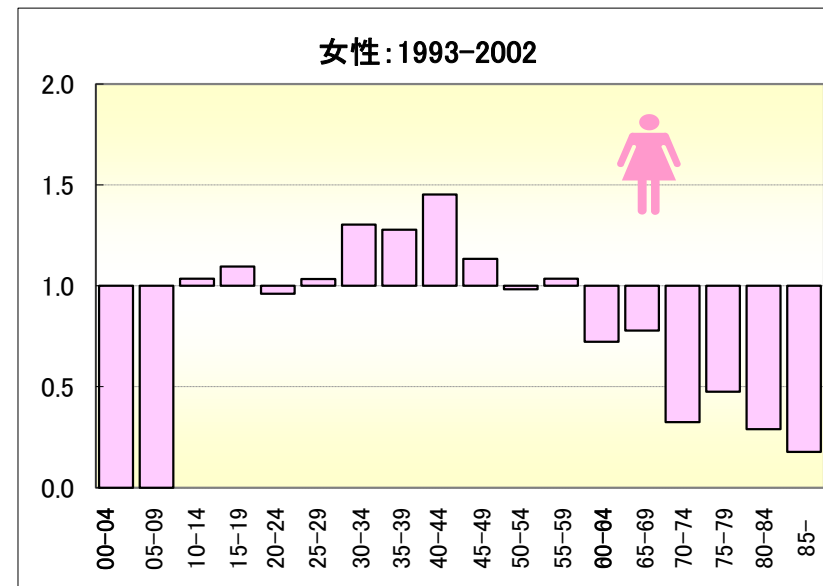
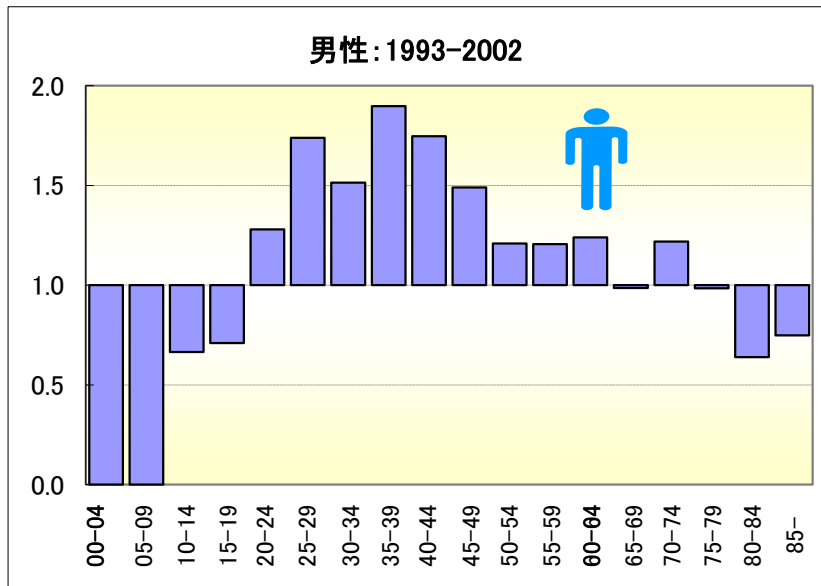


# 自殺

## ● 期間別にみた年齢階級別死亡率（沖縄、全国：1993-2002）

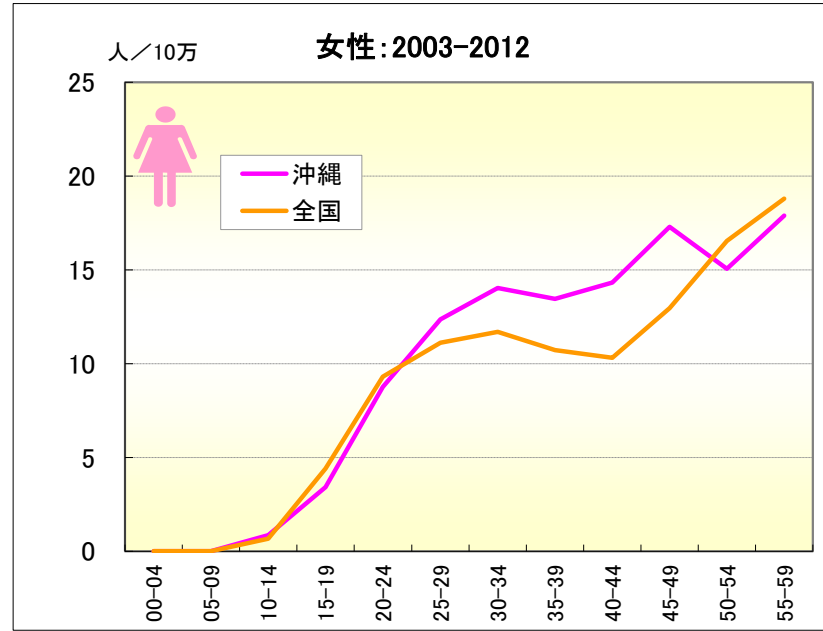
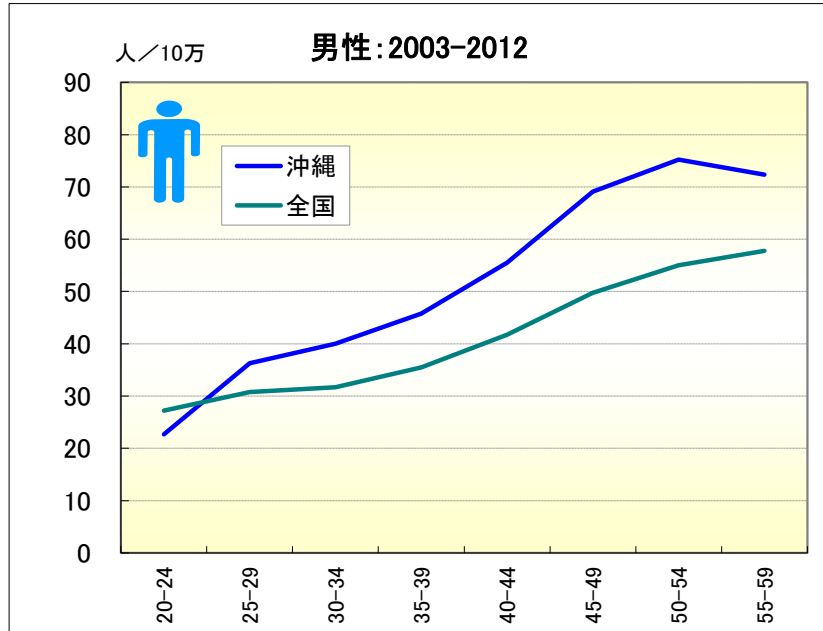


## ● 期間別にみた年齢階級別死亡率比（沖縄／全国：1993-2002）

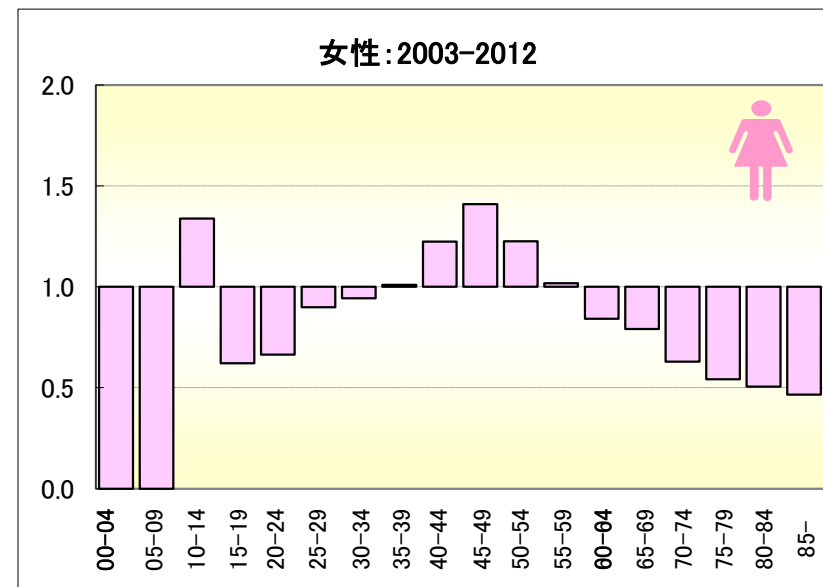
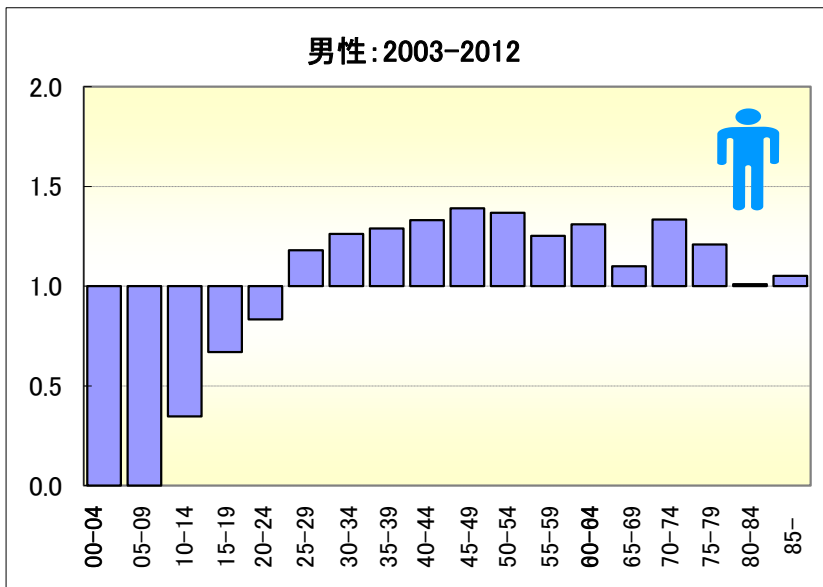


# 自殺

● 期間別にみた年齢階級別死亡率（沖縄、全国：2003-2012）



● 期間別にみた年齢階級別死亡率比（沖縄／全国：2003-2012）









# 自殺

● 期間（10年）別にみた年齢階級別死亡率および年齢階級別死亡率比の推移（沖縄・全国：男1973-2012）

