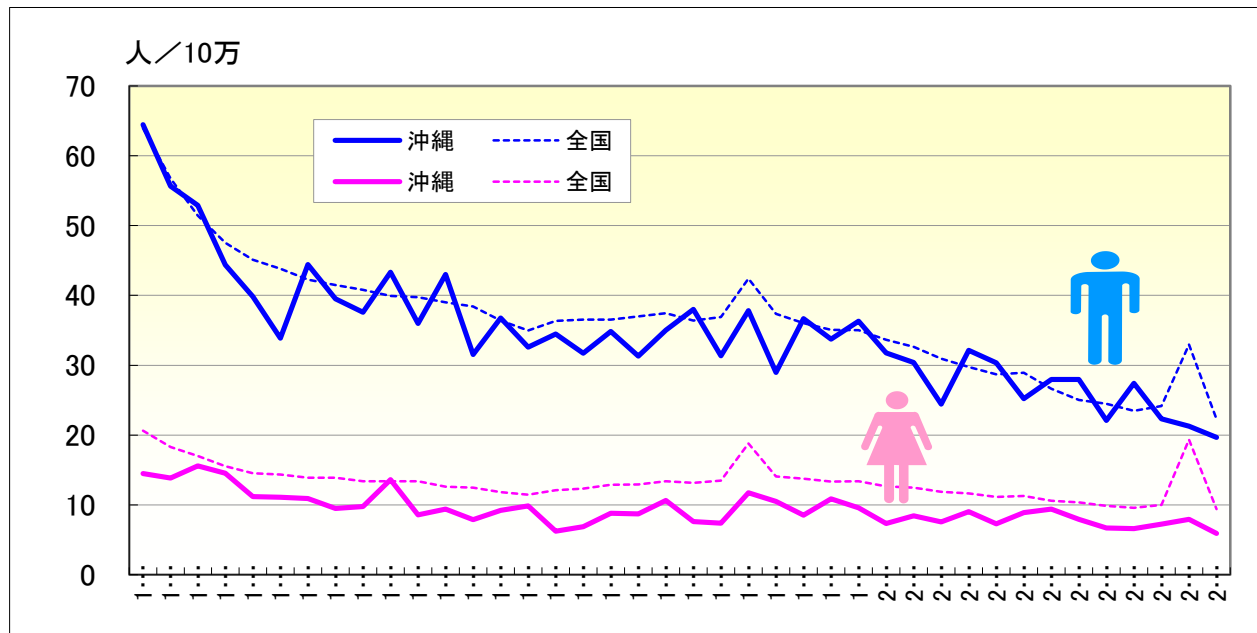


不慮の事故

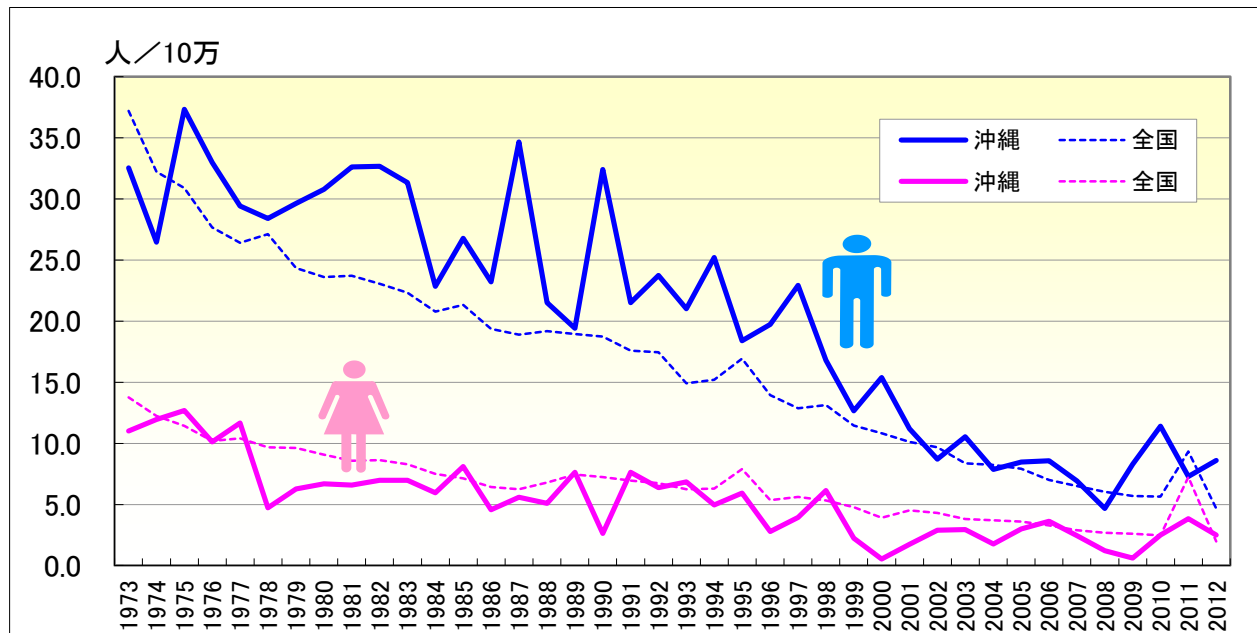
● 年齢調整死亡率の年次推移（沖縄、全国：1973-2012）



	男性				女性			
	粗死亡率		年齢調整死亡率		粗死亡率		年齢調整死亡率	
	沖縄	全国	沖縄	全国	沖縄	全国	沖縄	全国
1973	54.45	56.60	64.44	63.95	13.75	18.60	14.49	20.63
1974	47.14	49.97	55.63	56.77	14.16	16.62	13.84	18.28
1975	48.69	45.44	52.90	51.42	15.69	15.65	15.57	17.01
1976	39.69	41.99	44.38	47.55	14.39	14.46	14.53	15.55
1977	36.11	40.11	39.86	45.12	11.82	13.78	11.19	14.55
1978	31.67	39.12	33.88	43.83	11.13	13.70	11.09	14.35
1979	38.96	37.54	44.42	42.26	11.01	13.46	10.91	13.89
1980	36.08	36.98	39.51	41.49	9.99	13.64	9.48	13.90
1981	34.26	36.68	37.60	40.79	10.40	13.34	9.78	13.40
1982	38.78	36.25	43.31	39.91	14.62	13.60	13.64	13.37
1983	33.09	36.38	35.96	39.73	9.46	13.93	8.59	13.40
1984	37.50	36.10	43.01	39.01	10.36	13.37	9.42	12.62
1985	28.37	36.07	31.55	38.44	9.06	13.53	7.89	12.47
1986	32.51	34.46	36.78	36.40	9.82	13.22	9.21	11.84
1987	31.50	33.69	32.59	34.98	11.22	13.15	9.88	11.47
1988	31.34	35.62	34.49	36.37	7.04	14.27	6.23	12.10
1989	29.67	36.31	31.73	36.55	8.11	14.77	6.88	12.34
1990	33.89	36.85	34.86	36.54	10.30	15.88	8.82	12.89
1991	30.12	37.86	31.32	36.99	10.38	16.40	8.73	12.91
1992	33.83	38.96	35.02	37.47	12.05	17.61	10.66	13.39
1993	36.34	38.53	37.98	36.40	10.54	17.95	7.61	13.16
1994	30.86	39.58	31.36	36.89	9.99	19.03	7.40	13.46
1995	36.90	46.34	37.83	42.41	15.35	26.97	11.75	18.82
1996	29.10	41.70	28.99	37.34	14.93	21.54	10.49	14.09
1997	36.98	41.10	36.66	36.04	12.69	21.53	8.54	13.76
1998	33.87	40.75	33.72	35.05	13.82	21.80	10.88	13.33
1999	37.05	41.64	36.32	35.02	13.88	22.67	9.57	13.39
2000	32.13	40.92	31.77	33.64	12.44	22.33	7.35	12.65
2001	31.61	40.58	30.41	32.62	14.29	22.55	8.45	12.46
2002	26.05	39.43	24.45	30.95	11.98	22.29	7.55	11.86
2003	35.02	38.90	32.15	29.74	13.37	22.85	9.03	11.65
2004	33.59	38.42	30.36	28.70	11.53	22.49	7.29	11.15
2005	27.82	39.91	25.19	28.91	14.21	23.65	8.90	11.26
2006	31.29	37.89	27.98	26.63	15.15	23.12	9.40	10.61
2007	33.10	36.85	27.95	25.04	13.79	23.66	7.95	10.35
2008	26.28	37.12	22.11	24.46	13.15	23.72	6.68	9.88
2009	33.26	36.82	27.42	23.47	14.37	23.42	6.58	9.56
2010	28.41	38.94	22.34	24.17	14.45	25.86	7.22	10.00
2011	26.68	52.86	21.26	32.96	15.23	41.61	7.93	19.35
2012	25.40	38.67	19.67	22.27	13.34	26.79	5.89	9.42

不慮の事故

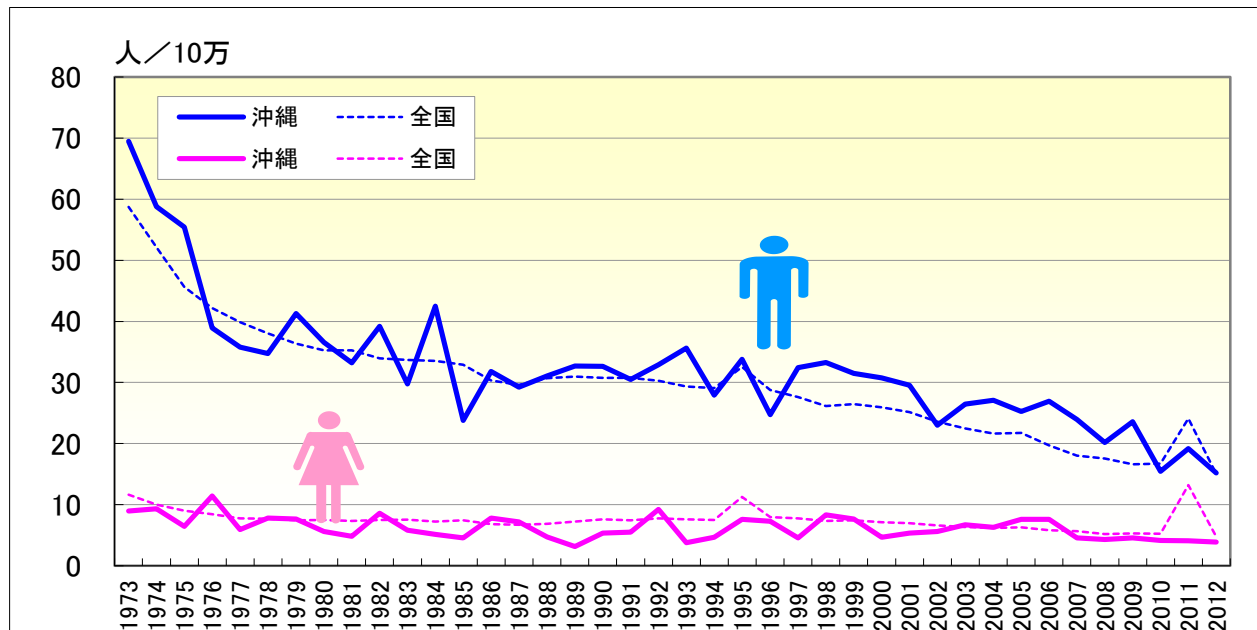
● 年齢調整死亡率（0-19歳）の年次推移（沖縄、全国：1973-2012）



	男性				女性			
	年齢調整死亡率		0-19年齢調整死亡率		年齢調整死亡率		0-19年齢調整死亡率	
	沖縄	全国	沖縄	全国	沖縄	全国	沖縄	全国
1973	64.44	63.95	32.54	37.19	14.49	20.63	11.02	13.77
1974	55.63	56.77	26.47	32.23	13.84	18.28	11.96	12.25
1975	52.90	51.42	37.33	30.90	15.57	17.01	12.69	11.42
1976	44.38	47.55	32.98	27.68	14.53	15.55	10.11	10.19
1977	39.86	45.12	29.42	26.43	11.19	14.55	11.66	10.41
1978	33.88	43.83	28.40	27.12	11.09	14.35	4.73	9.68
1979	44.42	42.26	29.62	24.35	10.91	13.89	6.26	9.63
1980	39.51	41.49	30.79	23.60	9.48	13.90	6.70	9.08
1981	37.60	40.79	32.61	23.72	9.78	13.40	6.58	8.58
1982	43.31	39.91	32.67	23.06	13.64	13.37	6.99	8.63
1983	35.96	39.73	31.34	22.34	8.59	13.40	6.97	8.29
1984	43.01	39.01	22.85	20.79	9.42	12.62	5.96	7.51
1985	31.55	38.44	26.79	21.33	7.89	12.47	8.10	7.12
1986	36.78	36.40	23.21	19.37	9.21	11.84	4.57	6.42
1987	32.59	34.98	34.66	18.90	9.88	11.47	5.59	6.26
1988	34.49	36.37	21.51	19.18	6.23	12.10	5.08	6.80
1989	31.73	36.55	19.41	18.96	6.88	12.34	7.63	7.46
1990	34.86	36.54	32.41	18.75	8.82	12.89	2.63	7.25
1991	31.32	36.99	21.51	17.59	8.73	12.91	7.63	6.95
1992	35.02	37.47	23.75	17.46	10.66	13.39	6.37	6.76
1993	37.98	36.40	21.01	14.91	7.61	13.16	6.85	6.24
1994	31.36	36.89	25.21	15.20	7.40	13.46	4.96	6.30
1995	37.83	42.41	18.40	16.94	11.75	18.82	5.93	7.90
1996	28.99	37.34	19.74	13.94	10.49	14.09	2.80	5.36
1997	36.66	36.04	22.92	12.87	8.54	13.76	3.94	5.62
1998	33.72	35.05	16.80	13.14	10.88	13.33	6.15	5.34
1999	36.32	35.02	12.66	11.46	9.57	13.39	2.23	4.77
2000	31.77	33.64	15.39	10.84	7.35	12.65	0.55	3.91
2001	30.41	32.62	11.19	10.13	8.45	12.46	1.75	4.51
2002	24.45	30.95	8.70	9.69	7.55	11.86	2.88	4.30
2003	32.15	29.74	10.53	8.38	9.03	11.65	2.93	3.80
2004	30.36	28.70	7.86	8.25	7.29	11.15	1.78	3.71
2005	25.19	28.91	8.48	7.92	8.90	11.26	3.00	3.60
2006	27.98	26.63	8.58	7.01	9.40	10.61	3.62	3.29
2007	27.95	25.04	6.94	6.52	7.95	10.35	2.44	2.90
2008	22.11	24.46	4.68	6.04	6.68	9.88	1.22	2.68
2009	27.42	23.47	8.28	5.69	6.58	9.56	0.62	2.61
2010	22.34	24.17	11.40	5.64	7.22	10.00	2.50	2.48
2011	21.26	32.96	7.28	9.34	7.93	19.35	3.83	7.25
2012	19.67	22.27	8.59	4.67	5.89	9.42	2.51	1.97

不慮の事故

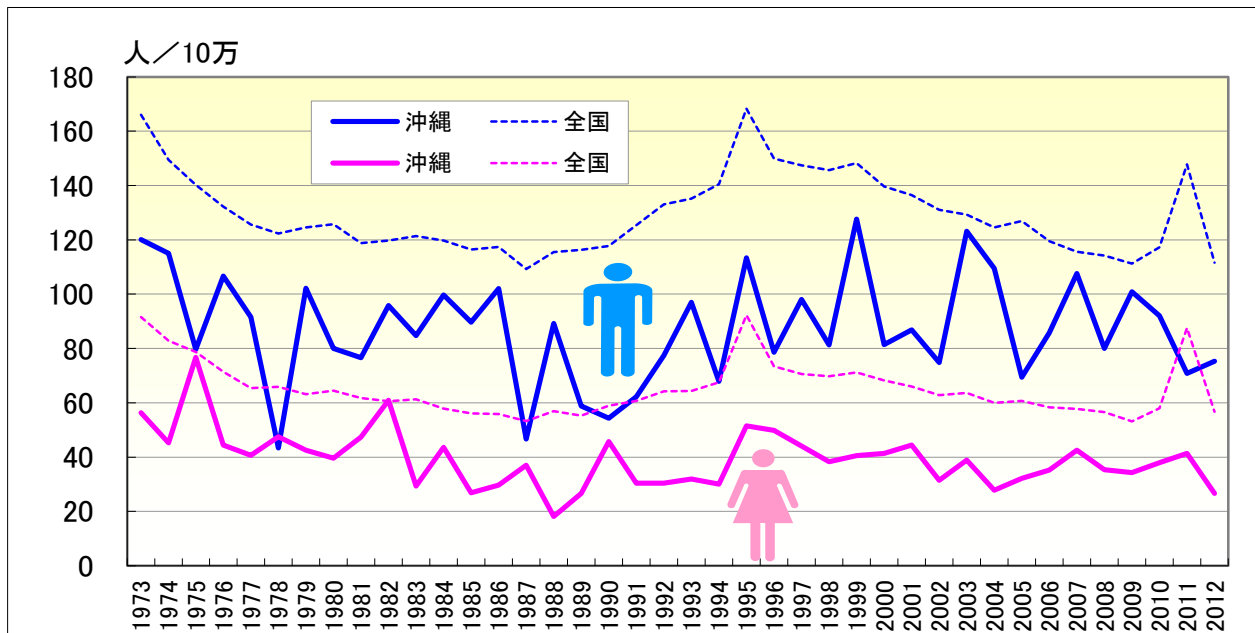
● 年齢調整死亡率（20-64歳）の年次推移（沖縄、全国：1973-2012）



	男性				女性			
	年齢調整死亡率		20-64年齢調整死亡率		年齢調整死亡率		20-64年齢調整死亡率	
	沖縄	全国	沖縄	全国	沖縄	全国	沖縄	全国
1973	64.44	63.95	69.47	58.72	14.49	20.63	8.94	11.65
1974	55.63	56.77	58.77	52.12	13.84	18.28	9.33	10.01
1975	52.90	51.42	55.43	45.62	15.57	17.01	6.46	9.04
1976	44.38	47.55	38.94	42.16	14.53	15.55	11.45	8.46
1977	39.86	45.12	35.79	39.89	11.19	14.55	5.94	7.76
1978	33.88	43.83	34.75	38.06	11.09	14.35	7.79	7.69
1979	44.42	42.26	41.30	36.39	10.91	13.89	7.65	7.43
1980	39.51	41.49	36.57	35.26	9.48	13.90	5.62	7.47
1981	37.60	40.79	33.23	35.24	9.78	13.40	4.82	7.35
1982	43.31	39.91	39.20	33.96	13.64	13.37	8.59	7.48
1983	35.96	39.73	29.75	33.71	8.59	13.40	5.80	7.57
1984	43.01	39.01	42.52	33.54	9.42	12.62	5.15	7.23
1985	31.55	38.44	23.80	32.93	7.89	12.47	4.56	7.46
1986	36.78	36.40	31.81	30.34	9.21	11.84	7.83	6.80
1987	32.59	34.98	29.25	29.63	9.88	11.47	7.21	6.70
1988	34.49	36.37	31.06	30.69	6.23	12.10	4.71	6.88
1989	31.73	36.55	32.70	30.95	6.88	12.34	3.16	7.24
1990	34.86	36.54	32.66	30.78	8.82	12.89	5.33	7.60
1991	31.32	36.99	30.52	30.74	8.73	12.91	5.53	7.46
1992	35.02	37.47	32.91	30.29	10.66	13.39	9.23	7.74
1993	37.98	36.40	35.64	29.32	7.61	13.16	3.81	7.60
1994	31.36	36.89	27.93	29.09	7.40	13.46	4.65	7.49
1995	37.83	42.41	33.80	32.53	11.75	18.82	7.61	11.26
1996	28.99	37.34	24.73	28.79	10.49	14.09	7.29	7.95
1997	36.66	36.04	32.44	27.59	8.54	13.76	4.58	7.77
1998	33.72	35.05	33.29	26.17	10.88	13.33	8.34	7.35
1999	36.32	35.02	31.51	26.44	9.57	13.39	7.64	7.45
2000	31.77	33.64	30.76	25.92	7.35	12.65	4.65	7.15
2001	30.41	32.62	29.54	25.16	8.45	12.46	5.35	6.95
2002	24.45	30.95	23.01	23.57	7.55	11.86	5.60	6.62
2003	32.15	29.74	26.46	22.49	9.03	11.65	6.71	6.35
2004	30.36	28.70	27.11	21.66	7.29	11.15	6.29	6.19
2005	25.19	28.91	25.25	21.76	8.90	11.26	7.62	6.31
2006	27.98	26.63	26.95	19.73	9.40	10.61	7.62	5.81
2007	27.95	25.04	23.94	18.02	7.95	10.35	4.56	5.66
2008	22.11	24.46	20.17	17.55	6.68	9.88	4.28	5.20
2009	27.42	23.47	23.60	16.60	6.58	9.56	4.57	5.30
2010	22.34	24.17	15.44	16.73	7.22	10.00	4.14	5.23
2011	21.26	32.96	19.17	24.12	7.93	19.35	4.10	13.22
2012	19.67	22.27	15.22	15.05	5.89	9.42	3.90	4.75

不慮の事故

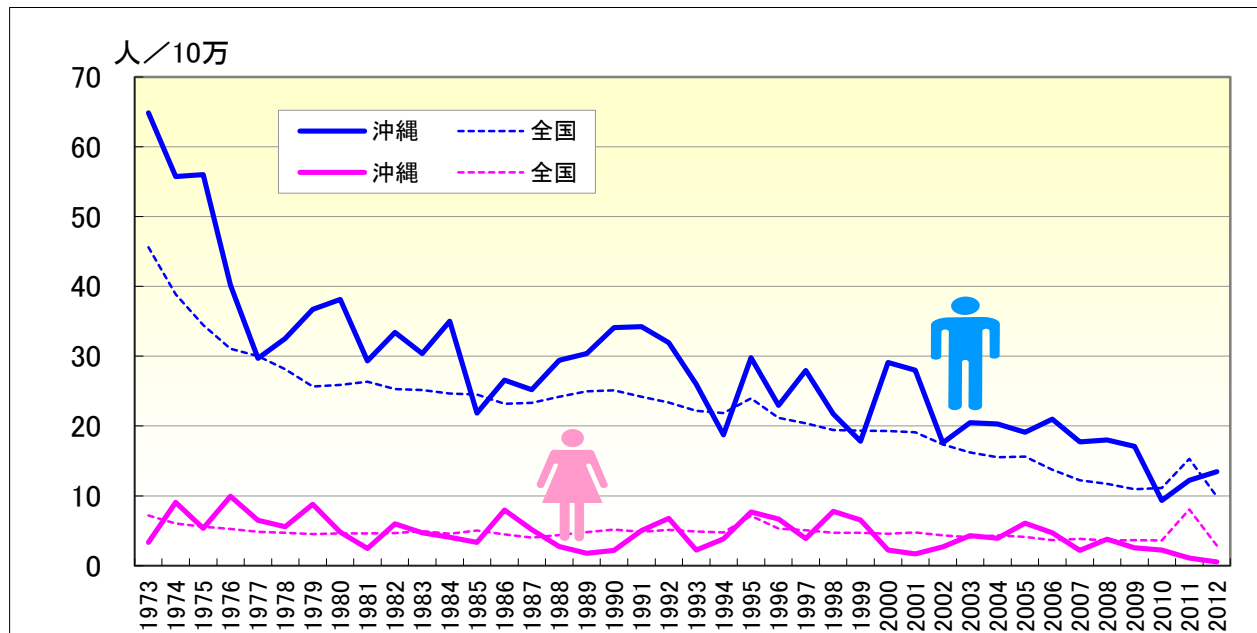
● 年齢調整死亡率（65歳以上）の年次推移（沖縄、全国：1973-2012）



	男性				女性			
	年齢調整死亡率		65-年齢調整死亡率		年齢調整死亡率		65-年齢調整死亡率	
	沖縄	全国	沖縄	全国	沖縄	全国	沖縄	全国
1973	64.44	63.95	120.07	166.01	14.49	20.63	56.32	91.57
1974	55.63	56.77	115.07	149.50	13.84	18.28	45.29	82.86
1975	52.90	51.42	79.62	140.20	15.57	17.01	76.70	78.69
1976	44.38	47.55	106.66	132.22	14.53	15.55	44.44	71.45
1977	39.86	45.12	91.57	125.68	11.19	14.55	40.69	65.36
1978	33.88	43.83	43.37	122.29	11.09	14.35	47.44	65.91
1979	44.42	42.26	102.23	124.53	10.91	13.89	42.49	63.20
1980	39.51	41.49	80.00	125.72	9.48	13.90	39.54	64.46
1981	37.60	40.79	76.55	118.85	9.78	13.40	47.40	61.72
1982	43.31	39.91	95.84	119.77	13.64	13.37	60.98	60.58
1983	35.96	39.73	84.72	121.45	8.59	13.40	29.30	61.25
1984	43.01	39.01	99.74	119.71	9.42	12.62	43.65	57.87
1985	31.55	38.44	89.69	116.38	7.89	12.47	26.84	56.13
1986	36.78	36.40	102.09	117.38	9.21	11.84	29.72	55.87
1987	32.59	34.98	46.66	109.27	9.88	11.47	36.98	53.31
1988	34.49	36.37	89.25	115.52	6.23	12.10	18.17	56.88
1989	31.73	36.55	58.86	116.28	6.88	12.34	26.68	55.29
1990	34.86	36.54	54.30	117.79	8.82	12.89	45.77	58.96
1991	31.32	36.99	62.25	125.40	8.73	12.91	30.44	60.74
1992	35.02	37.47	77.45	133.01	10.66	13.39	30.45	64.21
1993	37.98	36.40	97.00	135.23	7.61	13.16	31.93	64.30
1994	31.36	36.89	67.84	140.52	7.40	13.46	30.10	67.57
1995	37.83	42.41	113.35	168.29	11.75	18.82	51.52	92.28
1996	28.99	37.34	78.62	149.95	10.49	14.09	49.81	73.36
1997	36.66	36.04	98.05	147.43	8.54	13.76	44.07	70.62
1998	33.72	35.05	81.37	145.63	10.88	13.33	38.35	69.78
1999	36.32	35.02	127.68	148.22	9.57	13.39	40.49	71.21
2000	31.77	33.64	81.46	139.69	7.35	12.65	41.35	68.23
2001	30.41	32.62	86.80	136.42	8.45	12.46	44.45	65.99
2002	24.45	30.95	74.88	131.01	7.55	11.86	31.41	62.81
2003	32.15	29.74	123.16	129.25	9.03	11.65	38.92	63.65
2004	30.36	28.70	109.43	124.59	7.29	11.15	27.80	60.02
2005	25.19	28.91	69.45	126.89	8.90	11.26	32.13	60.69
2006	27.98	26.63	85.75	119.48	9.40	10.61	35.27	58.31
2007	27.95	25.04	107.57	115.62	7.95	10.35	42.57	57.70
2008	22.11	24.46	80.06	114.15	6.68	9.88	35.31	56.53
2009	27.42	23.47	100.93	111.23	6.58	9.56	34.28	53.10
2010	22.34	24.17	92.03	117.23	7.22	10.00	37.93	57.97
2011	21.26	32.96	70.86	147.83	7.93	19.35	41.34	87.56
2012	19.67	22.27	75.30	111.62	5.89	9.42	26.61	56.70

不慮の事故

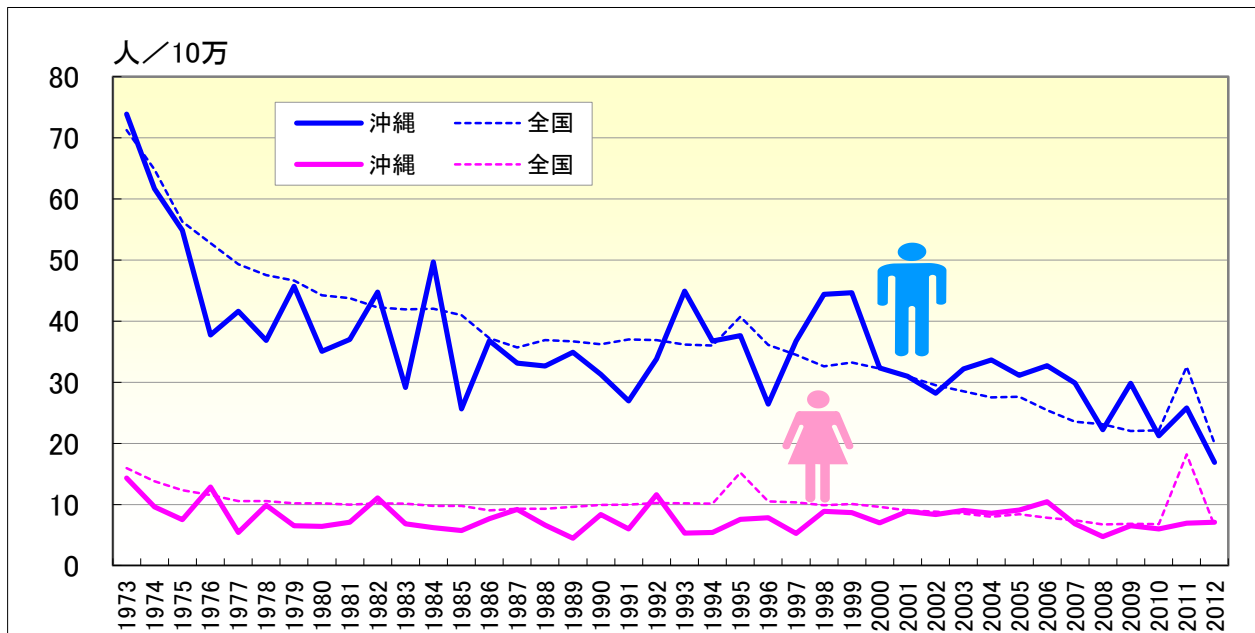
● 年齢調整死亡率（20-39歳）の年次推移（沖縄、全国：1973-2012）



	男性				女性			
	20-64年齢調整死亡率		20-39年齢調整死亡率		20-64年齢調整死亡率		20-39年齢調整死亡率	
	沖縄	全国	沖縄	全国	沖縄	全国	沖縄	全国
1973	69.47	58.72	64.83	45.60	8.94	11.65	3.31	7.16
1974	58.77	52.12	55.71	38.86	9.33	10.01	9.06	6.03
1975	55.43	45.62	55.99	34.47	6.46	9.04	5.36	5.60
1976	38.94	42.16	40.20	31.09	11.45	8.46	9.95	5.24
1977	35.79	39.89	29.68	30.03	5.94	7.76	6.48	4.87
1978	34.75	38.06	32.53	28.15	7.79	7.69	5.60	4.69
1979	41.30	36.39	36.70	25.68	7.65	7.43	8.81	4.54
1980	36.57	35.26	38.12	25.90	5.62	7.47	4.79	4.62
1981	33.23	35.24	29.31	26.34	4.82	7.35	2.47	4.61
1982	39.20	33.96	33.40	25.31	8.59	7.48	6.01	4.67
1983	29.75	33.71	30.36	25.15	5.80	7.57	4.72	4.92
1984	42.52	33.54	35.01	24.66	5.15	7.23	4.05	4.59
1985	23.80	32.93	21.86	24.50	4.56	7.46	3.34	5.04
1986	31.81	30.34	26.60	23.17	7.83	6.80	7.98	4.46
1987	29.25	29.63	25.22	23.31	7.21	6.70	5.16	4.01
1988	31.06	30.69	29.40	24.19	4.71	6.88	2.74	4.38
1989	32.70	30.95	30.40	24.97	3.16	7.24	1.79	4.78
1990	32.66	30.78	34.08	25.12	5.33	7.60	2.18	5.15
1991	30.52	30.74	34.25	24.19	5.53	7.46	5.04	4.86
1992	32.91	30.29	31.96	23.35	9.23	7.74	6.78	5.14
1993	35.64	29.32	25.96	22.16	3.81	7.60	2.23	4.88
1994	27.93	29.09	18.71	21.87	4.65	7.49	3.83	4.75
1995	33.80	32.53	29.76	23.94	7.61	11.26	7.68	7.14
1996	24.73	28.79	22.96	21.16	7.29	7.95	6.70	5.29
1997	32.44	27.59	27.96	20.38	4.58	7.77	3.87	5.06
1998	33.29	26.17	21.70	19.42	8.34	7.35	7.77	4.71
1999	31.51	26.44	17.80	19.33	7.64	7.45	6.56	4.71
2000	30.76	25.92	29.09	19.31	4.65	7.15	2.23	4.59
2001	29.54	25.16	28.01	19.09	5.35	6.95	1.69	4.76
2002	23.01	23.57	17.58	17.38	5.60	6.62	2.72	4.35
2003	26.46	22.49	20.49	16.21	6.71	6.35	4.30	4.09
2004	27.11	21.66	20.28	15.54	6.29	6.19	3.93	4.34
2005	25.25	21.76	19.11	15.63	7.62	6.31	6.07	4.10
2006	26.95	19.73	20.96	13.75	7.62	5.81	4.69	3.67
2007	23.94	18.02	17.74	12.24	4.56	5.66	2.18	3.85
2008	20.17	17.55	18.01	11.70	4.28	5.20	3.77	3.59
2009	23.60	16.60	17.07	10.94	4.57	5.30	2.56	3.67
2010	15.44	16.73	9.36	11.11	4.14	5.23	2.22	3.63
2011	19.17	24.12	12.25	15.30	4.10	13.22	1.11	8.04
2012	15.22	15.05	13.47	9.88	3.90	4.75	0.55	2.89

不慮の事故

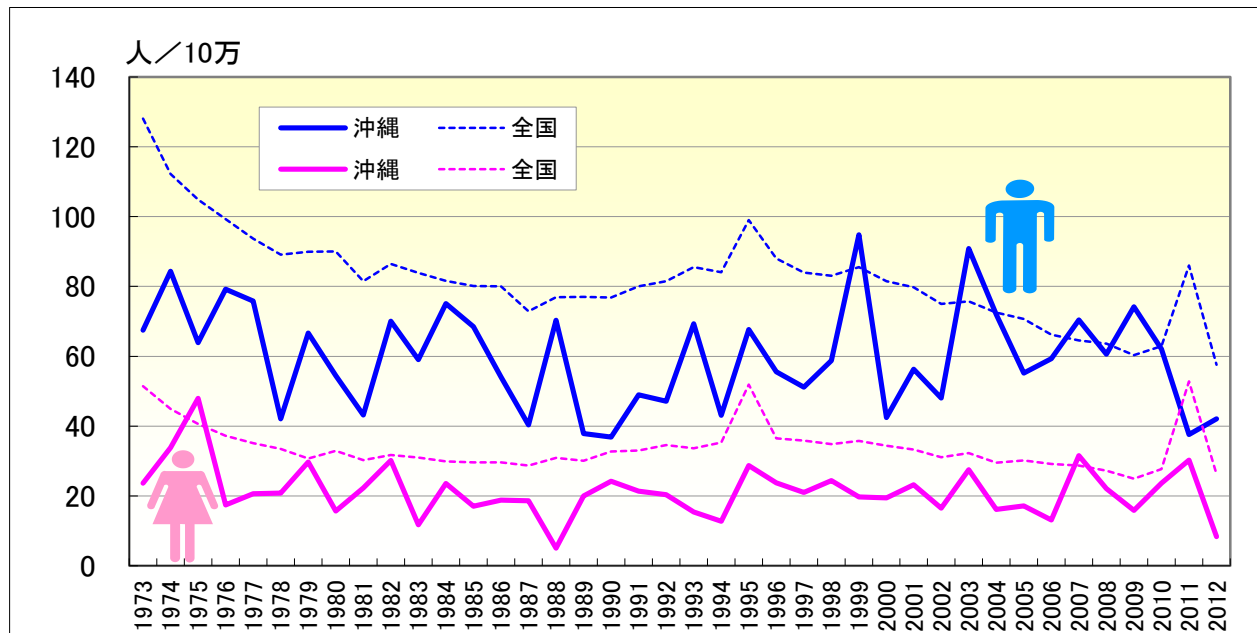
● 年齢調整死亡率（40-64歳）の年次推移（沖縄、全国：1973-2012）



	男性				女性			
	20-64年齢調整死亡率		40-64年齢調整死亡率		20-64年齢調整死亡率		40-64年齢調整死亡率	
	沖縄	全国	沖縄	全国	沖縄	全国	沖縄	全国
1973	69.47	58.72	73.91	71.29	8.94	11.65	14.34	15.94
1974	58.77	52.12	61.70	64.83	9.33	10.01	9.60	13.82
1975	55.43	45.62	54.89	56.31	6.46	9.04	7.51	12.34
1976	38.94	42.16	37.74	52.77	11.45	8.46	12.88	11.54
1977	35.79	39.89	41.64	49.34	5.94	7.76	5.43	10.53
1978	34.75	38.06	36.87	47.55	7.79	7.69	9.90	10.56
1979	41.30	36.39	45.70	46.64	7.65	7.43	6.53	10.20
1980	36.57	35.26	35.08	44.24	5.62	7.47	6.43	10.20
1981	33.23	35.24	36.99	43.78	4.82	7.35	7.08	9.97
1982	39.20	33.96	44.74	42.24	8.59	7.48	11.06	10.17
1983	29.75	33.71	29.17	41.91	5.80	7.57	6.83	10.11
1984	42.52	33.54	49.71	42.06	5.15	7.23	6.21	9.77
1985	23.80	32.93	25.67	41.00	4.56	7.46	5.73	9.77
1986	31.81	30.34	36.81	37.21	7.83	6.80	7.68	9.05
1987	29.25	29.63	33.11	35.68	7.21	6.70	9.18	9.28
1988	31.06	30.69	32.65	36.92	4.71	6.88	6.61	9.28
1989	32.70	30.95	34.91	36.69	3.16	7.24	4.46	9.59
1990	32.66	30.78	31.30	36.21	5.33	7.60	8.34	9.94
1991	30.52	30.74	26.94	37.01	5.53	7.46	6.00	9.96
1992	32.91	30.29	33.82	36.93	9.23	7.74	11.58	10.23
1993	35.64	29.32	44.90	36.17	3.81	7.60	5.32	10.20
1994	27.93	29.09	36.77	36.01	4.65	7.49	5.43	10.12
1995	33.80	32.53	37.66	40.75	7.61	11.26	7.55	15.20
1996	24.73	28.79	26.43	36.09	7.29	7.95	7.85	10.51
1997	32.44	27.59	36.74	34.50	4.58	7.77	5.27	10.36
1998	33.29	26.17	44.40	32.63	8.34	7.35	8.89	9.88
1999	31.51	26.44	44.63	33.26	7.64	7.45	8.68	10.08
2000	30.76	25.92	32.36	32.26	4.65	7.15	6.97	9.60
2001	29.54	25.16	31.00	30.97	5.35	6.95	8.86	9.05
2002	23.01	23.57	28.22	29.50	5.60	6.62	8.36	8.80
2003	26.46	22.49	32.18	28.52	6.71	6.35	9.01	8.52
2004	27.11	21.66	33.66	27.51	6.29	6.19	8.55	7.97
2005	25.25	21.76	31.13	27.62	7.62	6.31	9.10	8.43
2006	26.95	19.73	32.69	25.45	7.62	5.81	10.43	7.86
2007	23.94	18.02	29.88	23.55	4.56	5.66	6.84	7.39
2008	20.17	17.55	22.23	23.14	4.28	5.20	4.76	6.73
2009	23.60	16.60	29.86	22.01	4.57	5.30	6.50	6.85
2010	15.44	16.73	21.26	22.12	4.14	5.23	5.98	6.77
2011	19.17	24.12	25.80	32.56	4.10	13.22	6.96	18.19
2012	15.22	15.05	16.91	20.00	3.90	4.75	7.12	6.53

不慮の事故

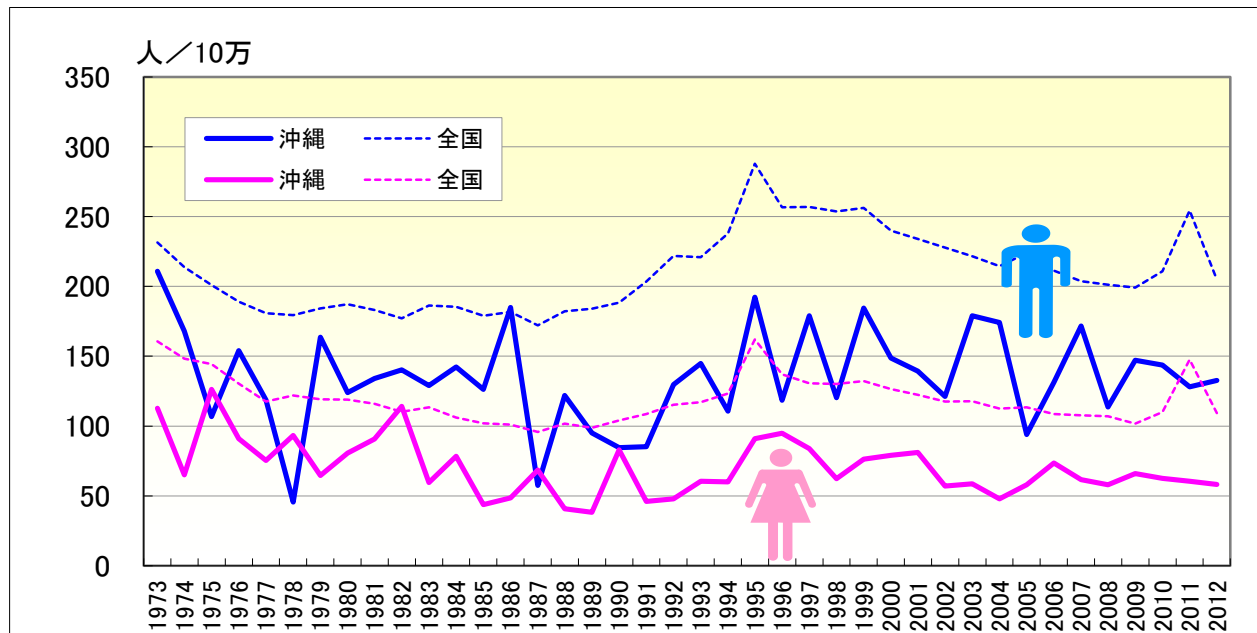
● 年齢調整死亡率（65-74歳）の年次推移（沖縄、全国：1973-2012）



	男性				女性			
	65-年齢調整死亡率		65-74年齢調整死亡率		65-年齢調整死亡率		65-74年齢調整死亡率	
	沖縄	全国	沖縄	全国	沖縄	全国	沖縄	全国
1973	120.07	166.01	67.47	128.06	56.32	91.57	23.67	51.47
1974	115.07	149.50	84.39	112.23	45.29	82.86	33.81	44.96
1975	79.62	140.20	63.94	104.93	76.70	78.69	47.99	40.66
1976	106.66	132.22	79.21	99.30	44.44	71.45	17.45	37.23
1977	91.57	125.68	75.85	93.75	40.69	65.36	20.62	35.16
1978	43.37	122.29	42.11	89.13	47.44	65.91	20.84	33.47
1979	102.23	124.53	66.66	89.97	42.49	63.20	29.72	30.77
1980	80.00	125.72	54.51	90.03	39.54	64.46	15.69	32.93
1981	76.55	118.85	43.24	81.55	47.40	61.72	22.30	30.25
1982	95.84	119.77	70.05	86.47	60.98	60.58	30.15	31.76
1983	84.72	121.45	59.07	83.87	29.30	61.25	11.78	30.98
1984	99.74	119.71	75.09	81.61	43.65	57.87	23.59	29.94
1985	89.69	116.38	68.52	80.14	26.84	56.13	17.09	29.58
1986	102.09	117.38	54.07	80.01	29.72	55.87	18.84	29.65
1987	46.66	109.27	40.34	72.89	36.98	53.31	18.64	28.66
1988	89.25	115.52	70.28	76.91	18.17	56.88	5.02	30.91
1989	58.86	116.28	37.86	77.02	26.68	55.29	20.02	30.04
1990	54.30	117.79	36.82	76.81	45.77	58.96	24.22	32.77
1991	62.25	125.40	48.92	80.07	30.44	60.74	21.35	33.04
1992	77.45	133.01	47.18	81.55	30.45	64.21	20.36	34.61
1993	97.00	135.23	69.33	85.54	31.93	64.30	15.38	33.65
1994	67.84	140.52	43.06	84.07	30.10	67.57	12.79	35.28
1995	113.35	168.29	67.66	99.03	51.52	92.28	28.70	51.91
1996	78.62	149.95	55.59	88.04	49.81	73.36	23.72	36.48
1997	98.05	147.43	51.19	83.98	44.07	70.62	21.00	35.84
1998	81.37	145.63	58.80	83.04	38.35	69.78	24.39	34.83
1999	127.68	148.22	94.81	85.55	40.49	71.21	19.76	35.80
2000	81.46	139.69	42.49	81.55	41.35	68.23	19.46	34.42
2001	86.80	136.42	56.31	79.80	44.45	65.99	23.25	33.27
2002	74.88	131.01	48.04	74.96	31.41	62.81	16.52	31.12
2003	123.16	129.25	90.86	75.75	38.92	63.65	27.50	32.29
2004	109.43	124.59	71.97	72.52	27.80	60.02	16.19	29.57
2005	69.45	126.89	55.24	70.68	32.13	60.69	17.12	30.14
2006	85.75	119.48	59.37	66.19	35.27	58.31	13.09	29.18
2007	107.57	115.62	70.44	64.55	42.57	57.70	31.55	28.73
2008	80.06	114.15	60.63	63.66	35.31	56.53	22.13	27.21
2009	100.93	111.23	74.15	60.32	34.28	53.10	15.89	24.94
2010	92.03	117.23	62.05	62.93	37.93	57.97	23.70	27.74
2011	70.86	147.83	37.61	86.00	41.34	87.56	30.26	52.81
2012	75.30	111.62	42.06	57.59	26.61	56.70	8.37	26.23

不慮の事故

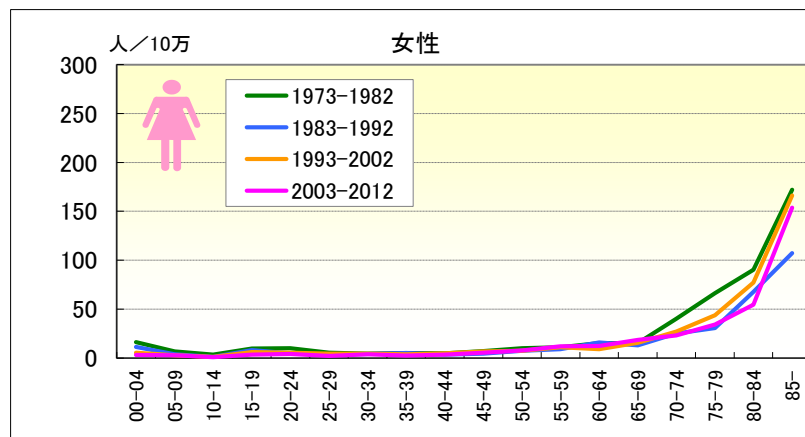
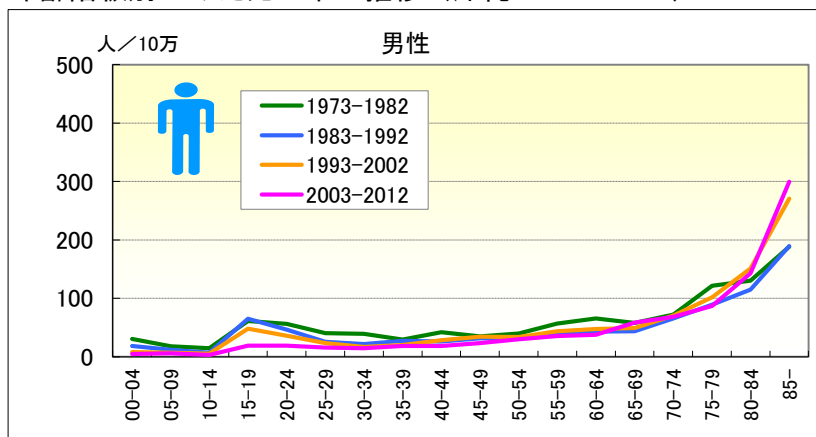
● 年齢調整死亡率（75歳以上）の年次推移（沖縄、全国：1973-2012）



	男性				女性			
	65-年齢調整死亡率		75-年齢調整死亡率		65-年齢調整死亡率		75-年齢調整死亡率	
	沖縄	全国	沖縄	全国	沖縄	全国	沖縄	全国
1973	120.07	166.01	210.79	231.47	56.32	91.57	112.64	160.73
1974	115.07	149.50	167.99	213.77	45.29	82.86	65.10	148.24
1975	79.62	140.20	106.67	201.03	76.70	78.69	126.22	144.27
1976	106.66	132.22	154.01	188.99	44.44	71.45	90.99	130.48
1977	91.57	125.68	118.67	180.76	40.69	65.36	75.30	117.45
1978	43.37	122.29	45.53	179.48	47.44	65.91	93.31	121.86
1979	102.23	124.53	163.57	184.14	42.49	63.20	64.52	119.13
1980	80.00	125.72	123.96	187.28	39.54	64.46	80.69	118.83
1981	76.55	118.85	134.02	183.16	47.40	61.72	90.68	115.99
1982	95.84	119.77	140.33	177.21	60.98	60.58	114.15	110.28
1983	84.72	121.45	128.96	186.25	29.30	61.25	59.51	113.44
1984	99.74	119.71	142.24	185.42	43.65	57.87	78.26	106.05
1985	89.69	116.38	126.19	178.89	26.84	56.13	43.64	101.91
1986	102.09	117.38	184.92	181.82	29.72	55.87	48.47	101.09
1987	46.66	109.27	57.55	172.02	36.98	53.31	68.60	95.82
1988	89.25	115.52	121.97	182.10	18.17	56.88	40.84	101.69
1989	58.86	116.28	95.07	184.00	26.68	55.29	38.17	98.82
1990	54.30	117.79	84.43	188.47	45.77	58.96	82.94	104.12
1991	62.25	125.40	85.23	203.58	30.44	60.74	46.12	108.52
1992	77.45	133.01	129.67	221.78	30.45	64.21	47.86	115.24
1993	97.00	135.23	144.72	220.93	31.93	64.30	60.47	117.15
1994	67.84	140.52	110.57	237.89	30.10	67.57	59.95	123.25
1995	113.35	168.29	192.14	287.75	51.52	92.28	90.89	161.92
1996	78.62	149.95	118.35	256.71	49.81	73.36	94.80	136.96
1997	98.05	147.43	178.88	256.85	44.07	70.62	83.85	130.60
1998	81.37	145.63	120.30	253.57	38.35	69.78	62.42	130.05
1999	127.68	148.22	184.38	256.30	40.49	71.21	76.25	132.29
2000	81.46	139.69	148.67	239.98	41.35	68.23	79.09	126.54
2001	86.80	136.42	139.40	234.07	44.45	65.99	81.00	122.42
2002	74.88	131.01	121.18	227.69	31.41	62.81	57.08	117.47
2003	123.16	129.25	178.89	221.51	38.92	63.65	58.64	117.75
2004	109.43	124.59	174.04	214.40	27.80	60.02	47.84	112.55
2005	69.45	126.89	93.96	223.85	32.13	60.69	58.00	113.38
2006	85.75	119.48	131.23	211.39	35.27	58.31	73.52	108.54
2007	107.57	115.62	171.61	203.69	42.57	57.70	61.59	107.65
2008	80.06	114.15	113.55	201.23	35.31	56.53	58.04	107.09
2009	100.93	111.23	147.12	199.04	34.28	53.10	66.00	101.66
2010	92.03	117.23	143.73	210.87	37.93	57.97	62.48	110.09
2011	70.86	147.83	128.19	254.46	41.34	87.56	60.45	147.49
2012	75.30	111.62	132.64	204.79	26.61	56.70	58.07	109.24

不慮の事故

● 年齢階級別にみた死亡率の推移（沖縄：1973-2012）

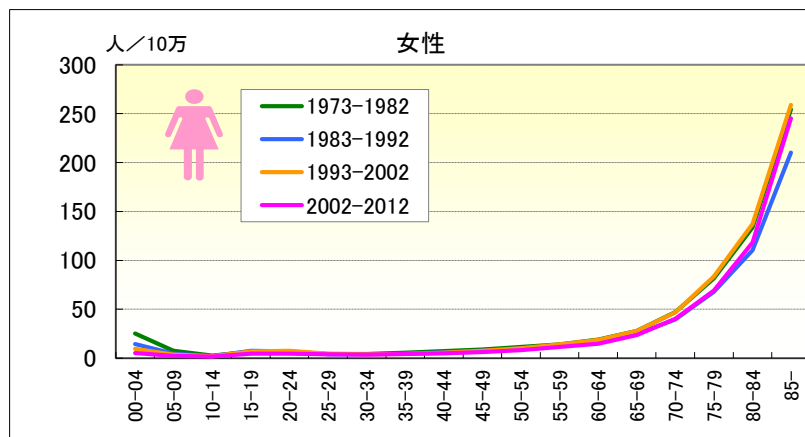
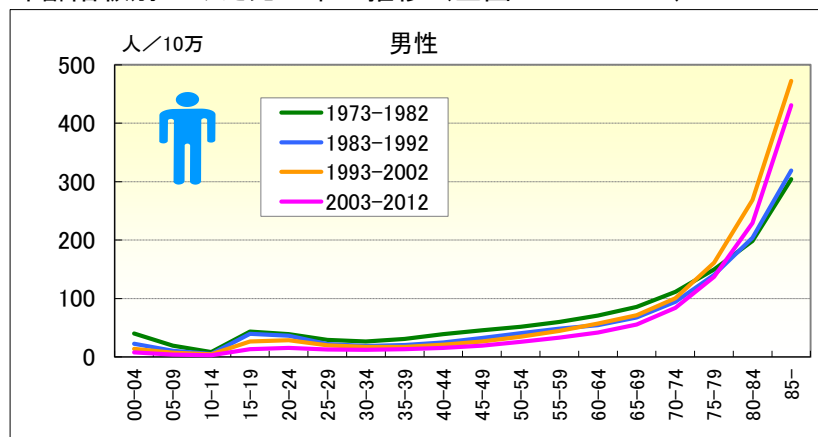


● 年齢階級別、性別*期間別死亡率（沖縄：1973-2012年）

		総数	00-04	05-09	10-14	15-19	20-24	25-29	30-34	35-39	40-44	45-49	50-54	55-59	60-64	65-69	70-74	75-79	80-84	85-
男	1973-1977	45.10	39.53	19.51	15.63	52.00	67.22	47.69	48.42	32.75	45.70	41.32	52.64	58.25	79.45	62.16	90.05	150.71	136.57	168.94
	1978-1982	35.98	20.97	16.29	13.26	71.41	44.39	33.60	32.57	26.24	37.89	29.69	30.45	55.24	53.59	53.97	57.34	96.32	124.36	201.52
	1973-1982	40.39	30.57	17.84	14.45	61.40	56.48	40.10	39.30	29.57	41.72	34.78	39.70	56.61	65.75	57.78	72.28	121.22	130.03	188.05
	1983-1987	32.57	22.64	12.44	7.67	67.42	38.48	24.29	25.65	23.25	23.49	30.69	31.21	47.98	50.72	51.75	68.62	95.19	120.63	237.61
	1988-1992	31.78	14.23	11.52	5.54	62.45	54.05	26.64	17.83	30.37	28.39	32.56	30.65	33.61	37.25	36.54	62.55	84.10	109.97	151.75
	1983-1992	32.17	18.58	11.99	6.63	64.85	46.27	25.38	21.94	27.05	26.21	31.61	30.93	39.91	42.95	43.43	65.36	89.15	114.66	189.25
	1993-1997	34.04	10.41	8.27	7.03	58.77	39.49	23.11	16.96	21.47	31.46	32.67	33.48	43.67	45.61	52.64	62.93	94.70	150.72	319.06
	1998-2002	32.11	5.62	4.88	3.30	37.29	31.99	23.94	17.09	18.79	24.84	35.77	33.66	43.50	49.52	46.71	75.96	107.78	151.07	232.26
	1993-2002	33.06	8.06	6.63	5.22	48.23	35.84	23.55	17.03	20.17	28.26	34.35	33.58	43.59	47.65	49.28	70.49	101.93	150.91	270.27
	2003-2007	32.16	6.69	7.38	3.99	15.68	20.79	17.99	16.91	23.12	20.48	30.51	35.71	41.43	37.09	70.19	68.39	93.61	168.91	288.40
	2008-2012	28.00	2.93	3.84	2.32	22.51	16.80	12.83	12.40	14.09	15.81	15.73	23.15	30.49	38.09	45.69	67.91	82.22	123.99	308.34
	2003-2012	30.06	4.83	5.64	3.18	18.97	18.88	15.51	14.72	18.30	18.13	23.34	29.64	35.42	37.65	58.32	68.14	87.09	142.60	299.29
女	1973-1977	13.95	21.58	8.55	4.12	12.04	12.35	6.51	3.11	5.55	4.87	8.39	10.30	12.03	17.41	15.01	46.21	72.12	97.01	154.51
	1978-1982	11.44	10.58	5.09	2.67	6.83	7.47	4.70	5.32	4.72	4.58	6.14	9.91	10.29	13.11	15.53	34.54	61.40	84.21	185.29
	1973-1982	12.66	16.27	6.76	3.40	9.52	10.02	5.53	4.36	5.15	4.72	7.19	10.09	11.09	15.11	15.29	39.98	66.16	90.05	172.19
	1983-1987	9.99	13.10	4.22	1.09	6.71	3.02	3.54	5.36	8.22	4.77	4.61	6.21	8.61	14.78	13.52	23.90	30.01	66.65	138.81
	1988-1992	9.60	9.25	3.23	1.54	9.37	6.34	3.28	3.04	2.48	2.45	4.23	8.74	9.42	16.75	12.46	26.08	31.17	68.37	83.81
	1983-1992	9.79	11.25	3.74	1.31	8.08	4.70	3.42	4.23	5.12	3.50	4.43	7.52	9.04	15.85	12.95	25.07	30.64	67.59	107.17
	1993-1997	12.71	8.11	2.61	2.03	6.95	6.48	5.46	4.09	3.46	3.35	6.45	5.49	11.17	6.37	13.40	29.62	45.73	82.92	172.69
	1998-2002	13.28	2.48	2.80	0.43	5.13	4.15	3.71	4.82	4.04	6.08	6.75	9.04	10.49	11.25	17.53	24.68	41.86	71.94	160.95
	1993-2002	13.00	5.35	2.70	1.26	6.06	5.35	4.54	4.47	3.75	4.69	6.61	7.44	10.84	8.90	15.61	26.92	43.64	76.99	166.12
	2003-2007	13.62	4.02	2.92	0.47	3.65	6.75	2.58	4.74	3.01	4.03	6.10	8.51	14.59	14.26	18.14	24.96	41.26	50.26	136.61
	2008-2012	14.11	2.02	2.53	0.98	2.95	1.05	1.82	2.93	2.29	2.61	4.54	6.61	9.92	10.55	19.17	21.37	28.38	57.99	167.89
	2003-2012	13.87	3.03	2.73	0.72	3.31	4.02	2.21	3.86	2.63	3.31	5.34	7.57	12.03	12.21	18.63	23.07	34.34	54.53	153.56

不慮の事故

● 年齢階級別にみた死亡率の推移（全国：1973-2012）

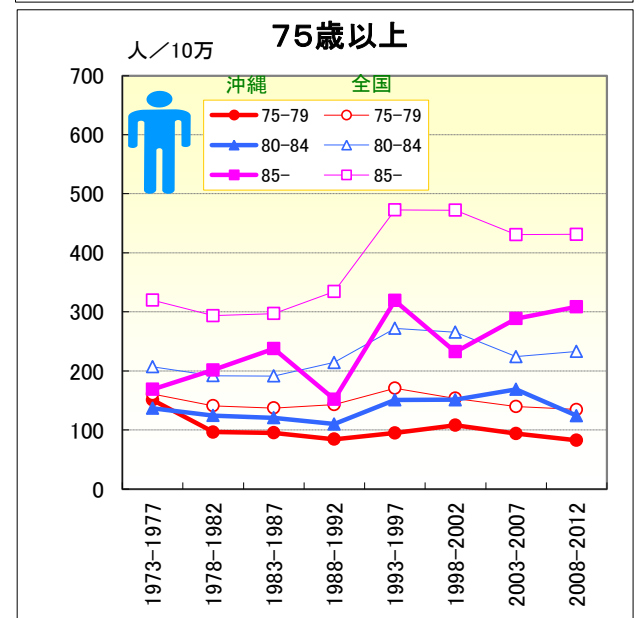
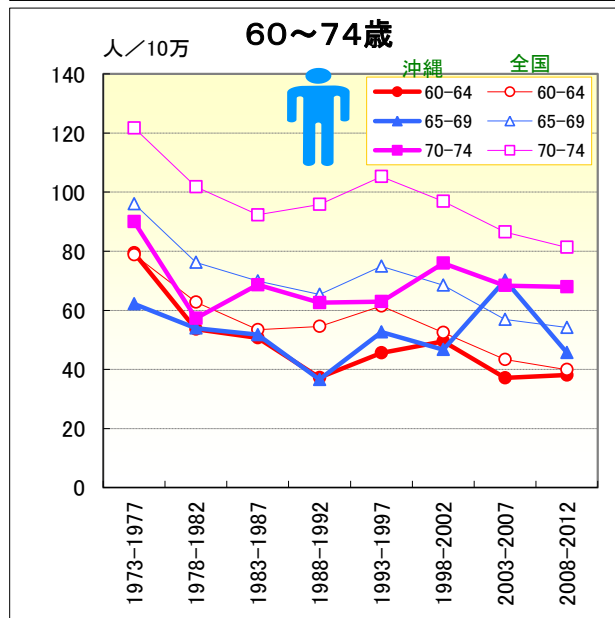
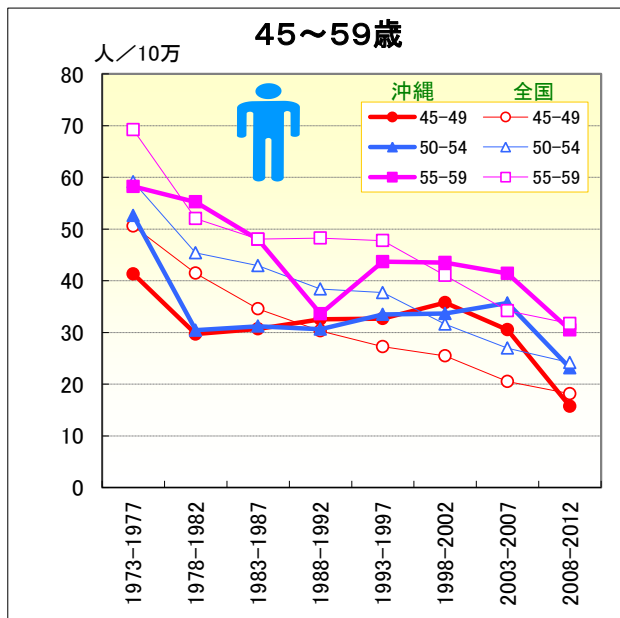
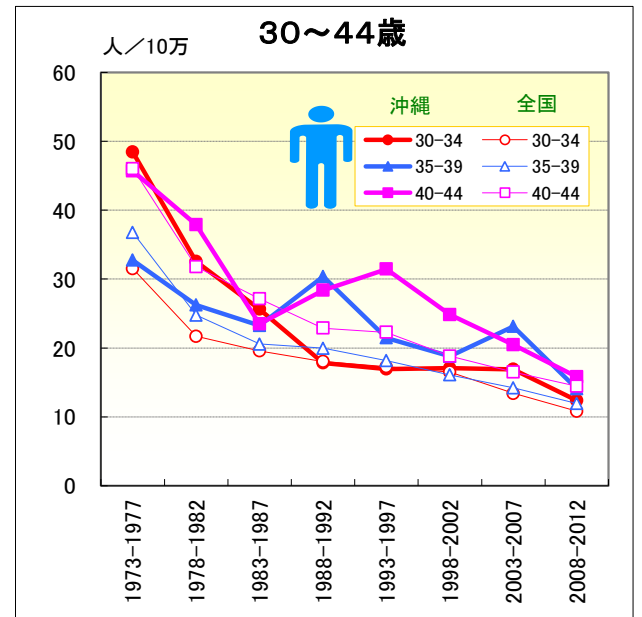
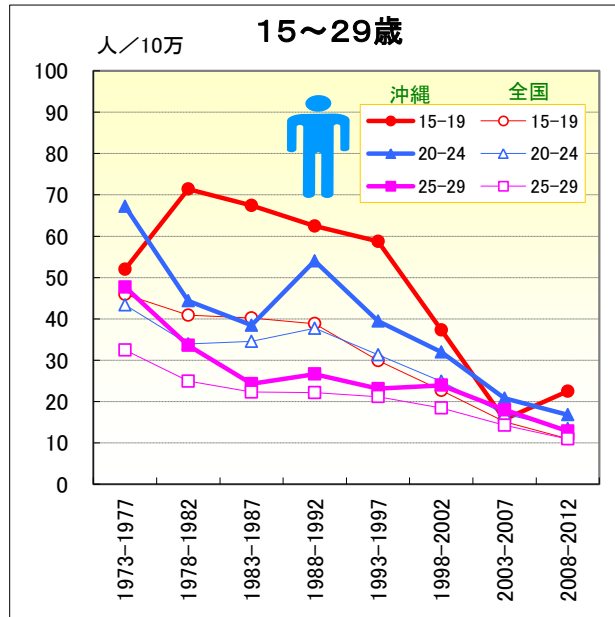
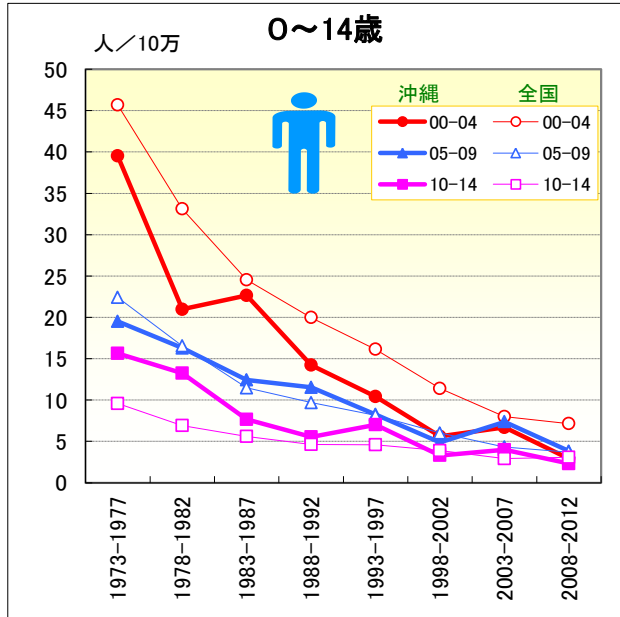


● 年齢階級別、性別*期間別死亡率（全国：1973-2012年）

		総数	00-04	05-09	10-14	15-19	20-24	25-29	30-34	35-39	40-44	45-49	50-54	55-59	60-64	65-69	70-74	75-79	80-84	85-
男	1973-1977	46.71	45.67	22.41	9.59	45.92	43.38	32.47	31.49	36.77	46.03	50.60	59.17	69.22	78.80	96.06	121.69	160.91	206.90	319.72
	1978-1982	37.31	33.12	16.55	6.91	40.91	33.95	24.94	21.69	24.77	31.77	41.45	45.43	52.05	62.73	76.23	101.81	140.92	191.86	293.43
	1973-1982	41.89	39.84	19.35	8.17	43.38	39.00	28.97	26.20	30.58	38.80	45.77	51.33	59.73	70.71	85.62	111.02	149.91	198.23	304.31
	1983-1987	35.33	24.52	11.48	5.62	40.20	34.58	22.31	19.57	20.57	27.12	34.56	42.94	48.04	53.39	69.90	92.32	137.09	191.18	296.86
	1988-1992	37.12	19.98	9.69	4.64	38.84	37.75	22.14	18.05	19.96	22.88	30.31	38.38	48.23	54.58	65.39	95.85	142.70	214.24	334.51
	1983-1992	36.24	22.40	10.65	5.16	39.49	36.25	22.22	18.87	20.29	24.84	32.36	40.62	48.14	54.07	67.39	94.13	140.12	204.04	318.78
	1993-1997	41.45	16.14	8.16	4.61	29.93	31.34	21.19	17.28	18.17	22.27	27.24	37.70	47.78	61.44	74.93	105.26	170.84	271.99	472.62
	1998-2002	40.66	11.41	6.01	3.91	22.68	24.89	18.44	16.50	16.10	18.82	25.48	31.62	41.02	52.50	68.52	96.91	153.46	265.44	472.21
	1993-2002	41.06	13.79	7.13	4.28	26.55	28.34	19.76	16.87	17.13	20.68	26.42	34.42	44.28	56.86	71.53	100.46	161.02	268.54	472.38
	2003-2007	38.39	7.99	4.32	2.93	15.11	17.01	14.25	13.42	14.22	16.50	20.53	26.96	34.17	43.38	56.92	86.56	139.62	224.08	430.78
2008-2012	40.88	7.16	3.72	3.09	11.03	13.45	10.95	10.81	11.95	14.45	18.15	24.18	31.69	39.90	54.21	81.35	134.56	232.76	431.17	
2003-2012	39.64	7.59	4.03	3.01	13.15	15.35	12.71	12.21	13.03	15.42	19.32	25.67	33.01	41.49	55.51	83.85	136.90	229.11	431.00	
女	1973-1977	15.79	28.69	9.15	2.98	6.27	7.25	4.56	5.03	6.34	8.13	9.82	12.75	16.24	21.14	32.28	53.74	91.53	149.06	269.70
	1978-1982	13.55	21.44	6.33	2.42	6.86	5.62	4.03	3.88	4.99	6.24	8.18	10.52	12.47	17.02	24.13	41.72	73.69	121.87	242.77
	1973-1982	14.64	25.32	7.68	2.69	6.57	6.50	4.32	4.41	5.64	7.17	8.97	11.56	14.19	19.00	27.87	47.16	81.67	133.44	254.23
	1983-1987	13.44	15.21	4.71	1.93	6.94	6.18	3.66	3.95	4.68	6.12	7.66	9.75	11.73	15.72	23.43	37.92	65.38	109.86	208.46
	1988-1992	15.79	13.53	4.34	2.18	8.31	7.79	4.01	3.61	4.17	5.44	7.58	9.91	12.87	16.90	25.64	41.05	69.59	110.54	211.38
	1983-1992	14.63	14.42	4.54	2.05	7.65	7.03	3.84	3.79	4.44	5.76	7.62	9.83	12.32	16.35	24.64	39.56	67.70	110.25	210.18
	1993-1997	21.41	11.38	4.06	2.18	7.65	8.00	4.91	4.34	4.56	5.98	8.07	11.39	15.18	20.52	29.89	50.06	89.00	142.10	261.33
	1998-2002	22.33	7.62	3.25	1.59	5.89	6.77	4.07	3.61	4.13	5.33	6.73	9.25	12.94	17.07	25.92	44.13	78.83	132.65	257.53
	1993-2002	21.87	9.52	3.67	1.90	6.83	7.43	4.47	3.95	4.34	5.68	7.44	10.24	14.02	18.76	27.81	46.86	83.36	137.03	259.09
	2003-2007	23.15	5.45	2.27	1.55	4.62	4.92	3.90	3.34	3.92	4.37	5.97	7.77	11.13	14.19	22.89	39.14	67.02	117.32	241.10
2008-2012	28.28	5.19	2.36	1.68	4.37	4.37	4.28	4.19	4.57	5.36	6.69	8.99	12.09	15.26	24.51	41.14	70.78	118.86	248.38	
2002-2012	25.72	5.32	2.32	1.62	4.50	4.66	4.08	3.74	4.26	4.89	6.33	8.33	11.58	14.76	23.73	40.17	69.01	118.16	245.23	

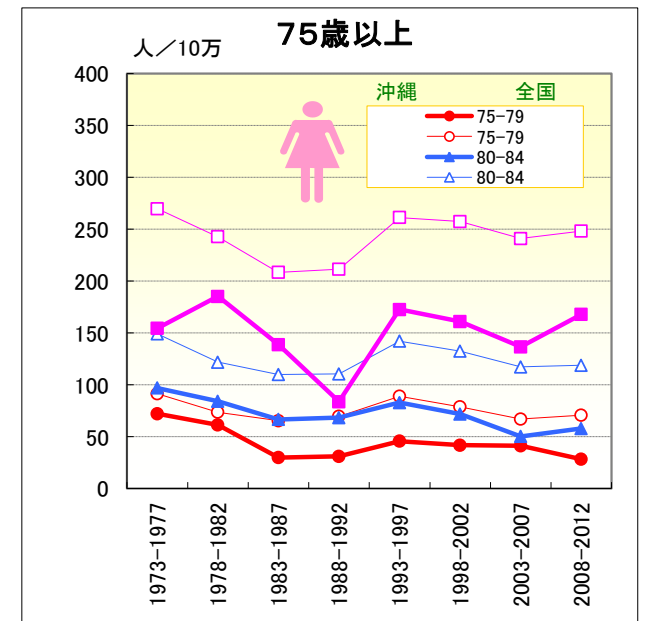
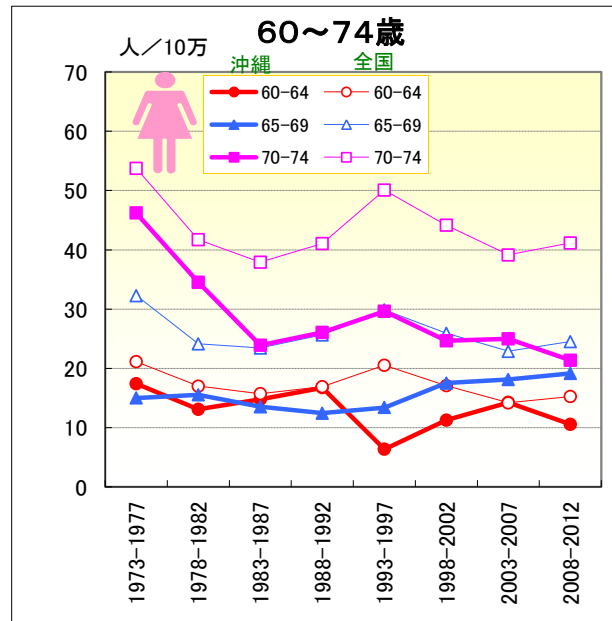
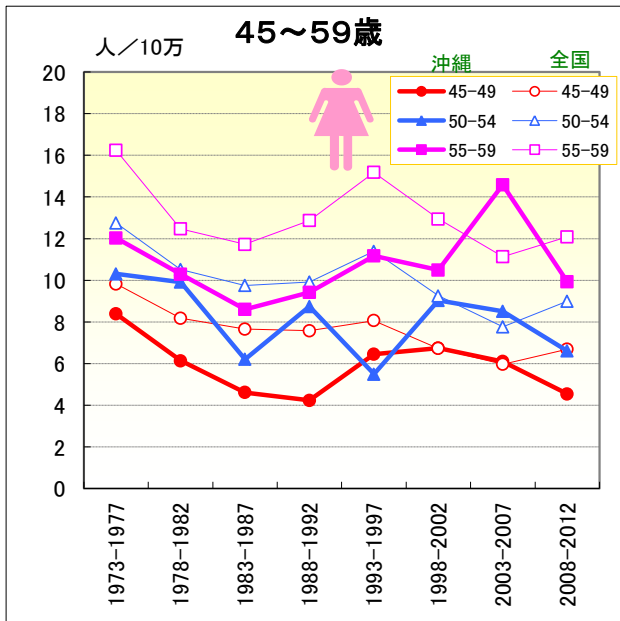
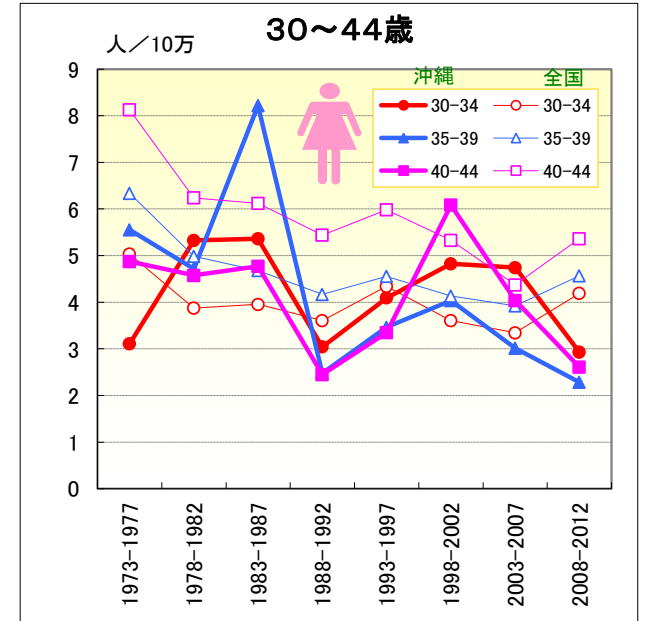
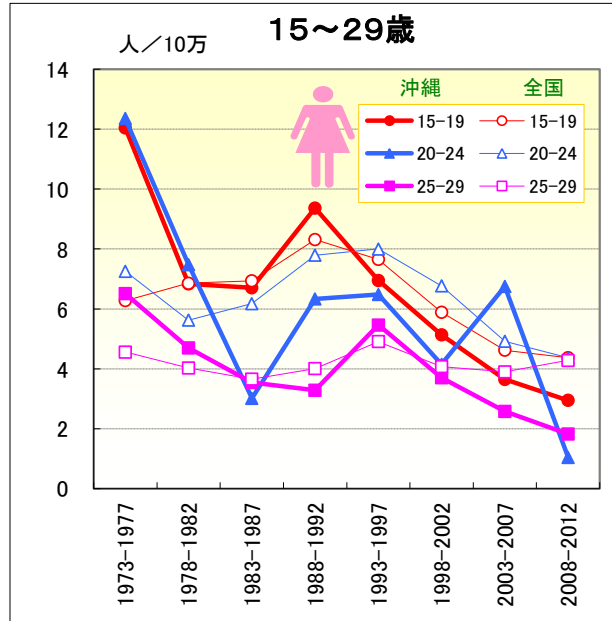
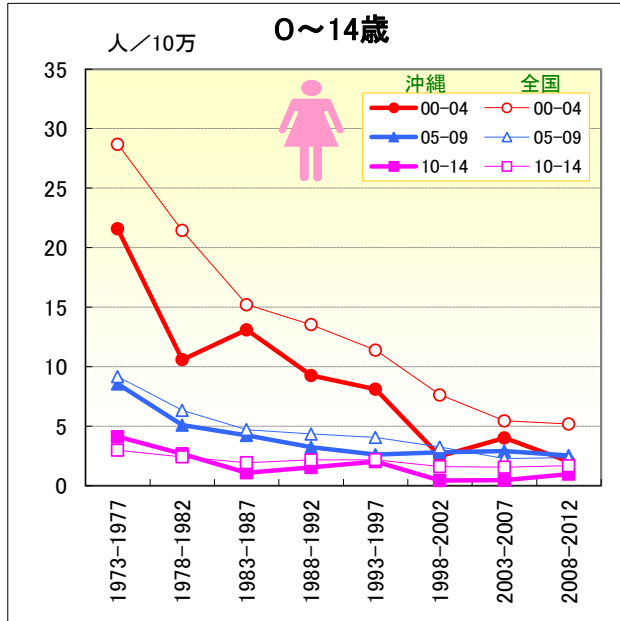
不慮の事故

● 年齢階級別にみた死亡率の推移 (沖縄・全国：男1973-2012)



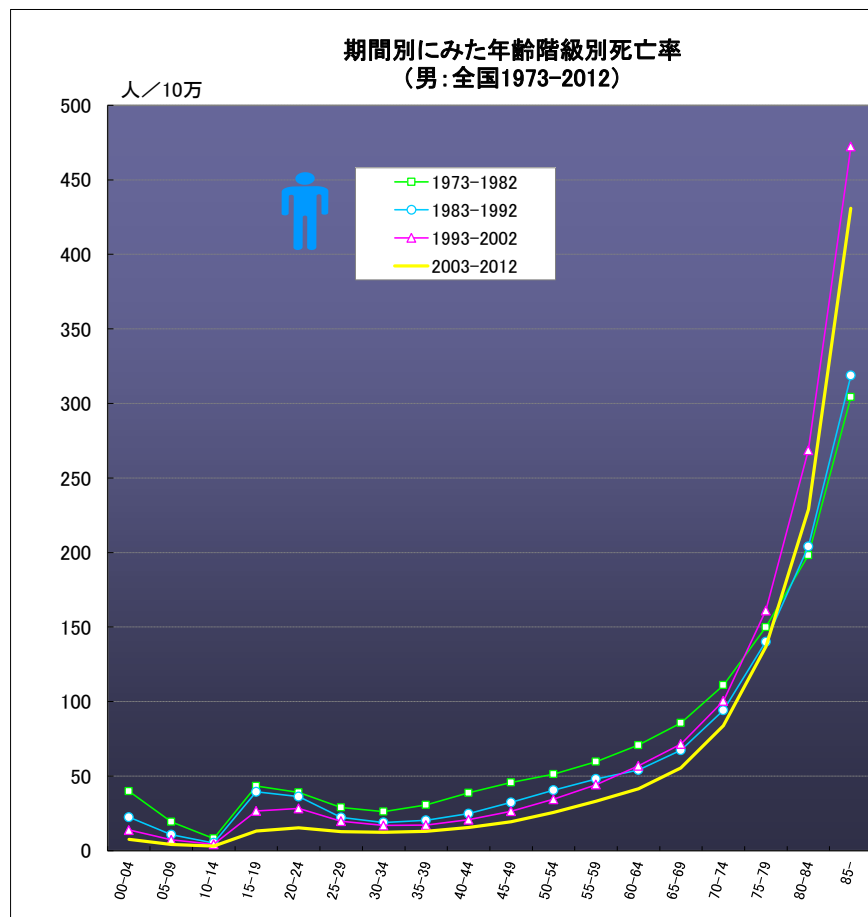
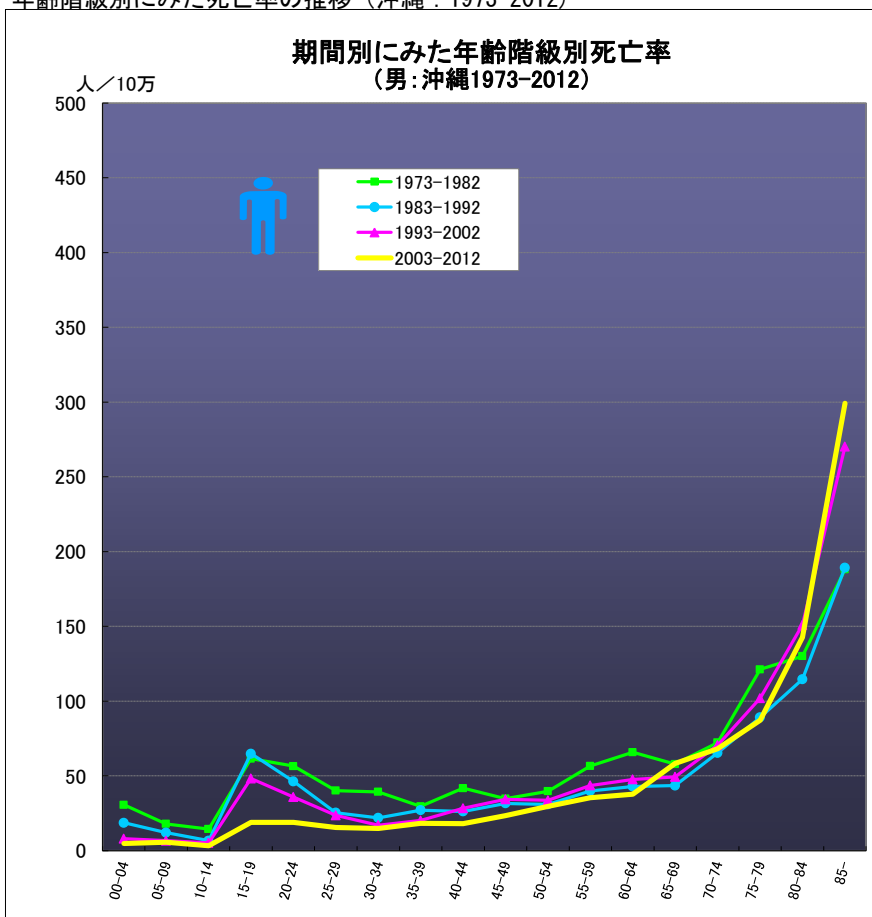
不慮の事故

● 年齢階級別にみた死亡率の推移 (沖縄・全国：女1973-2012)



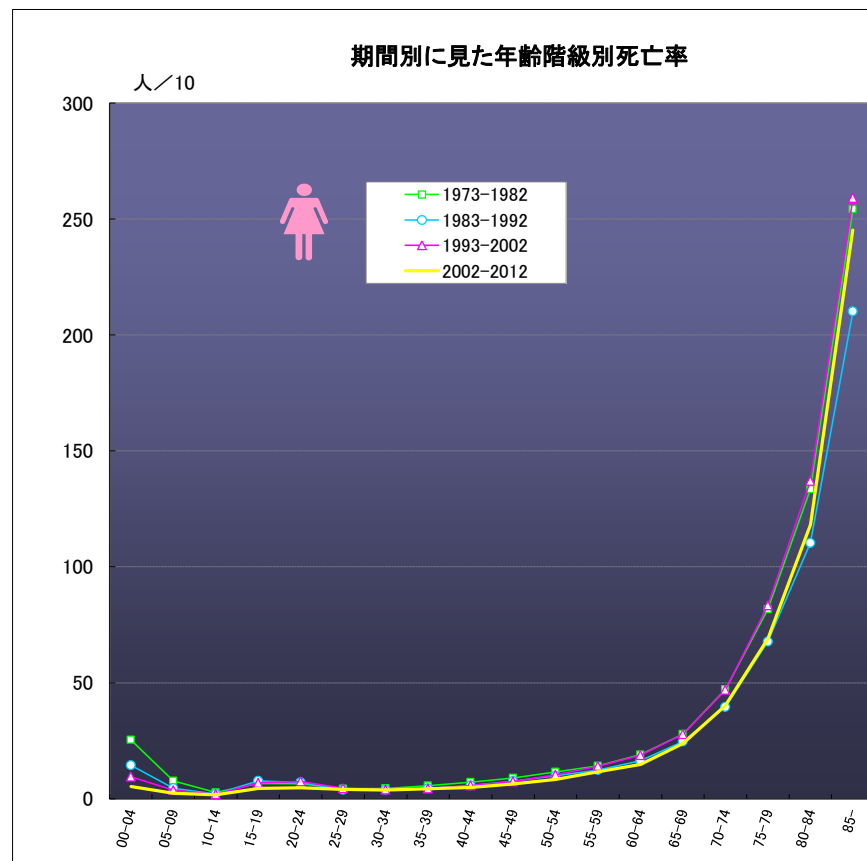
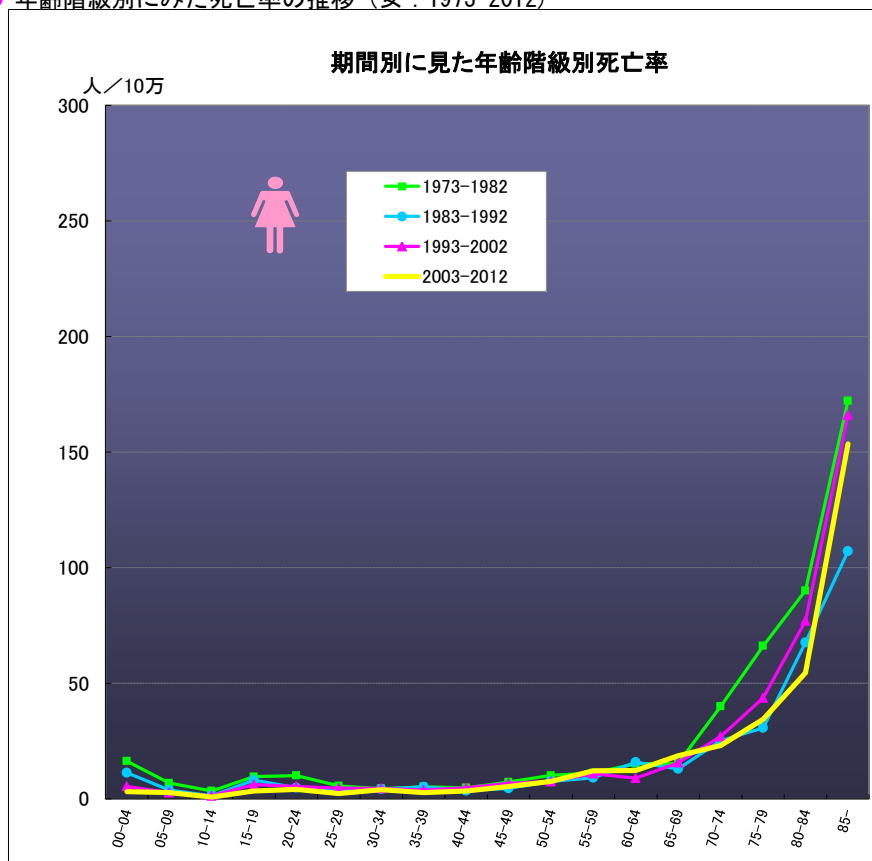
不慮の事故

● 年齢階級別にみた死亡率の推移 (沖縄: 1973-2012)



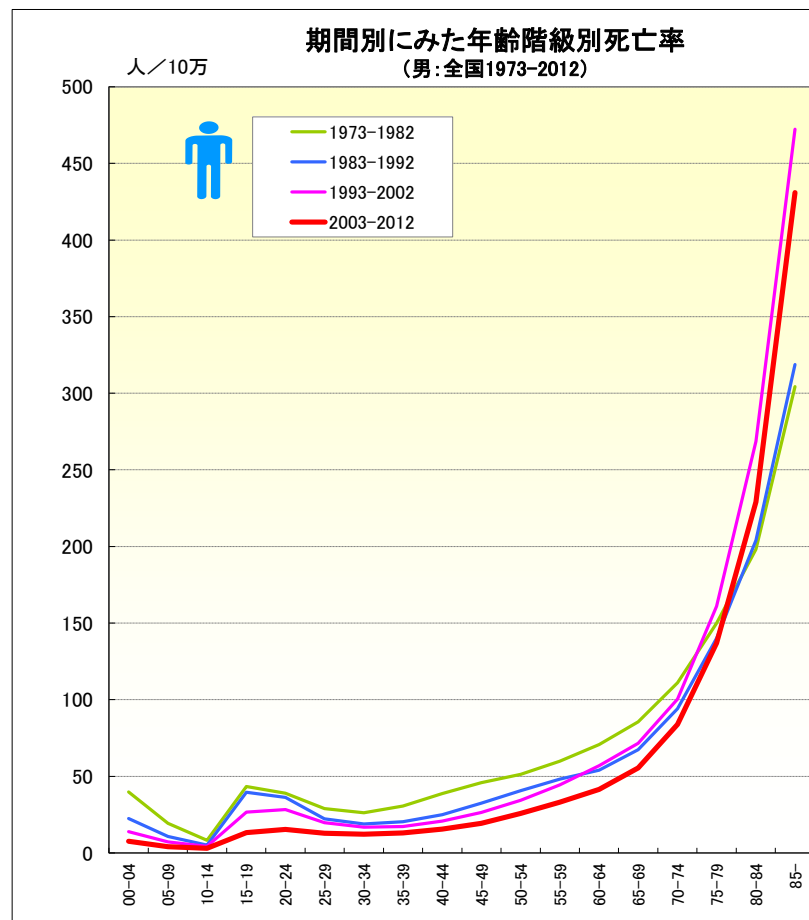
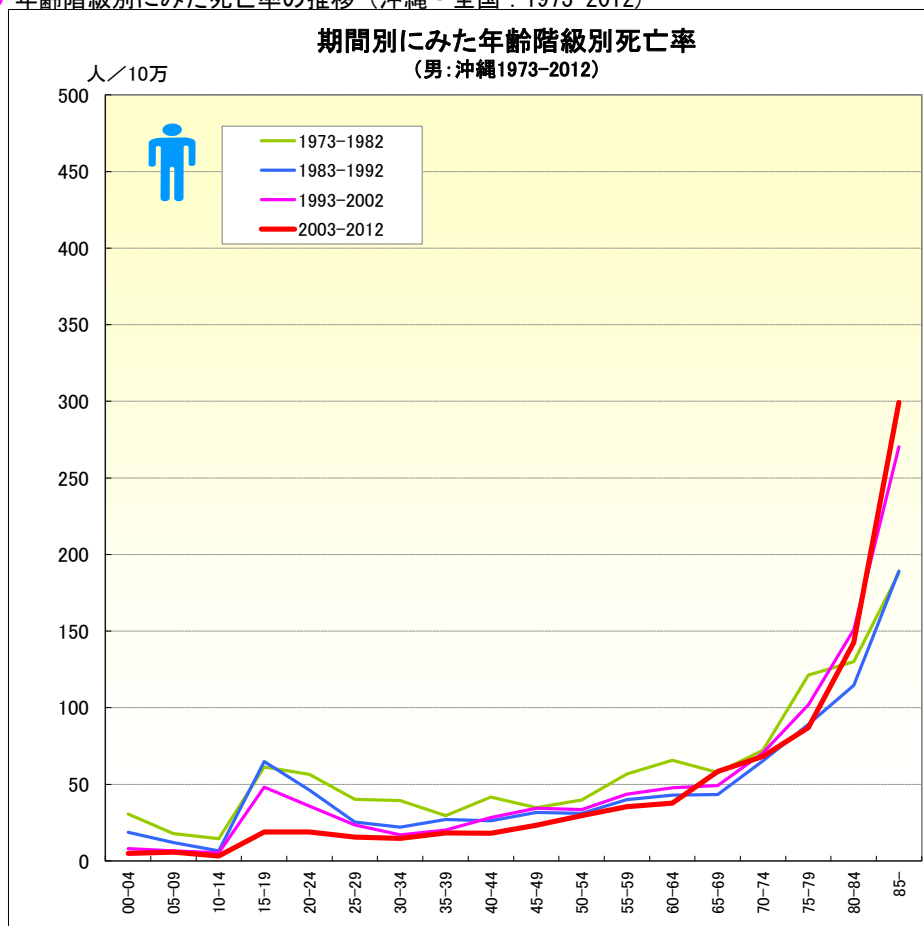
不慮の事故

● 年齢階級別に見た死亡率の推移（女：1973-2012）



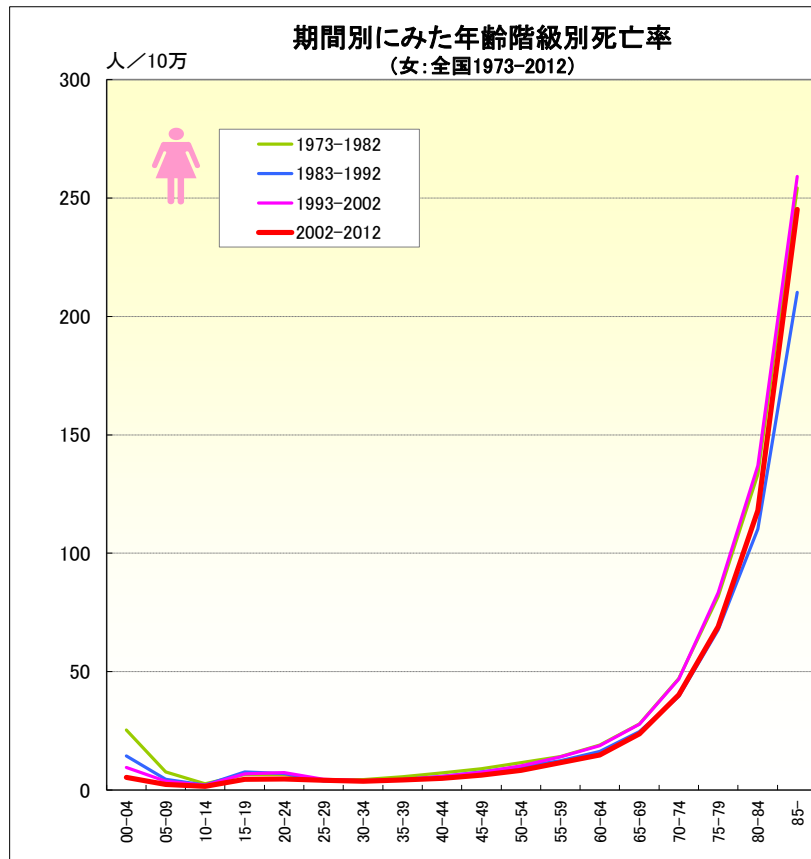
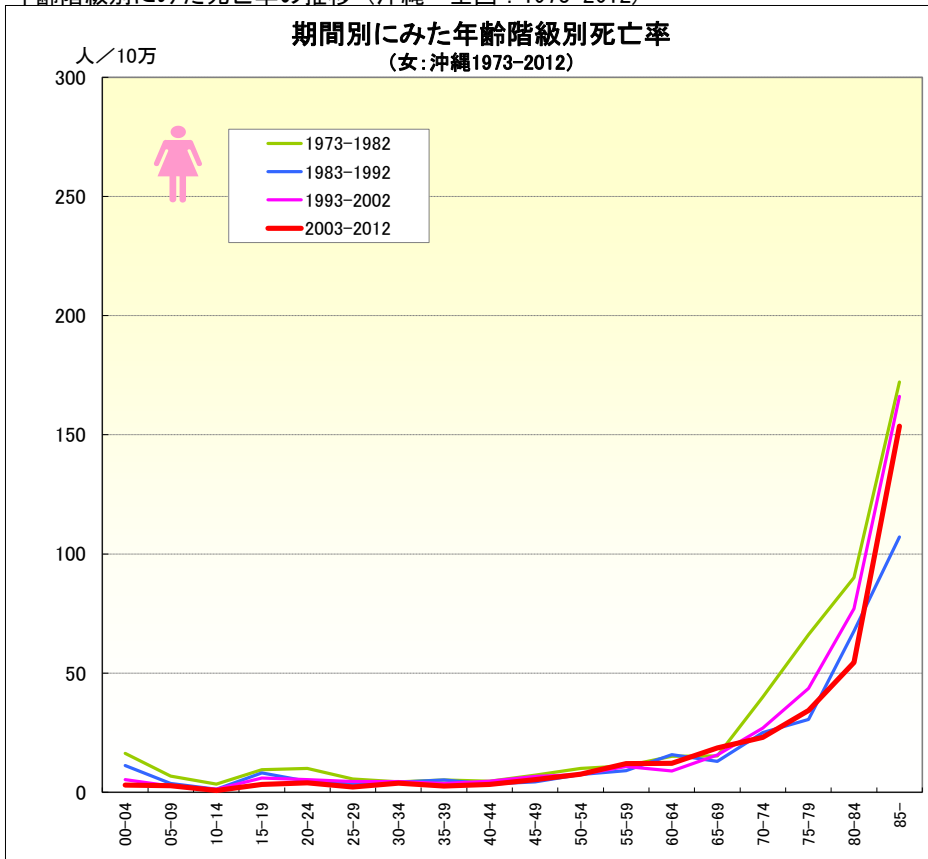
不慮の事故

● 年齢階級別に見た死亡率の推移（沖縄・全国：1973-2012）



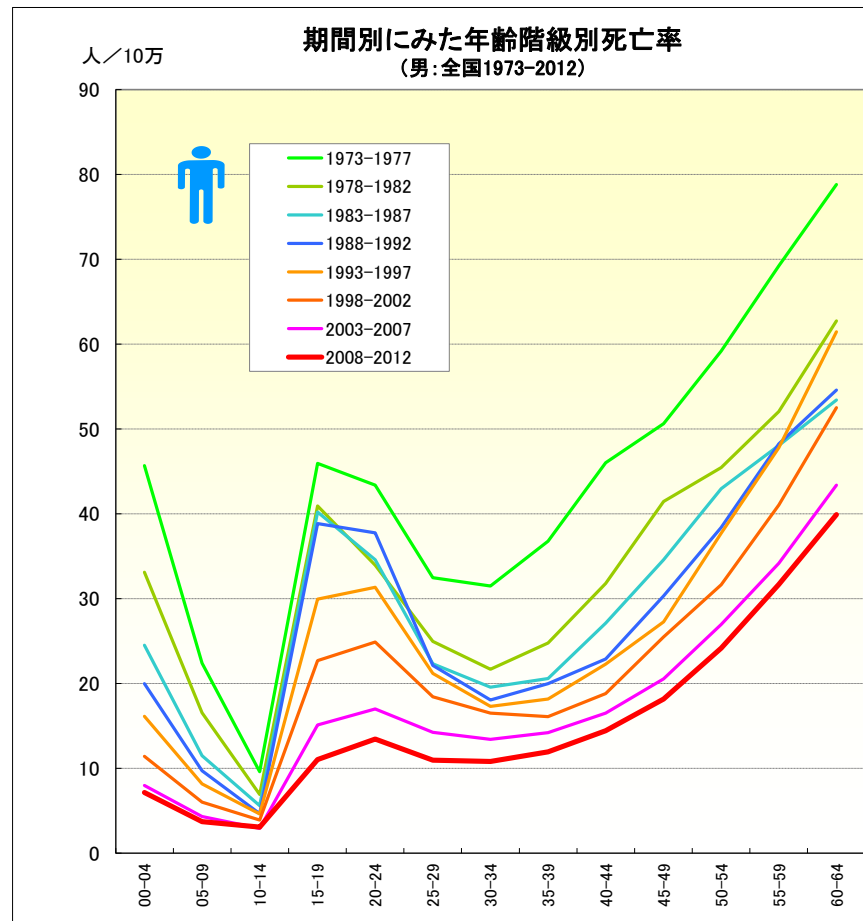
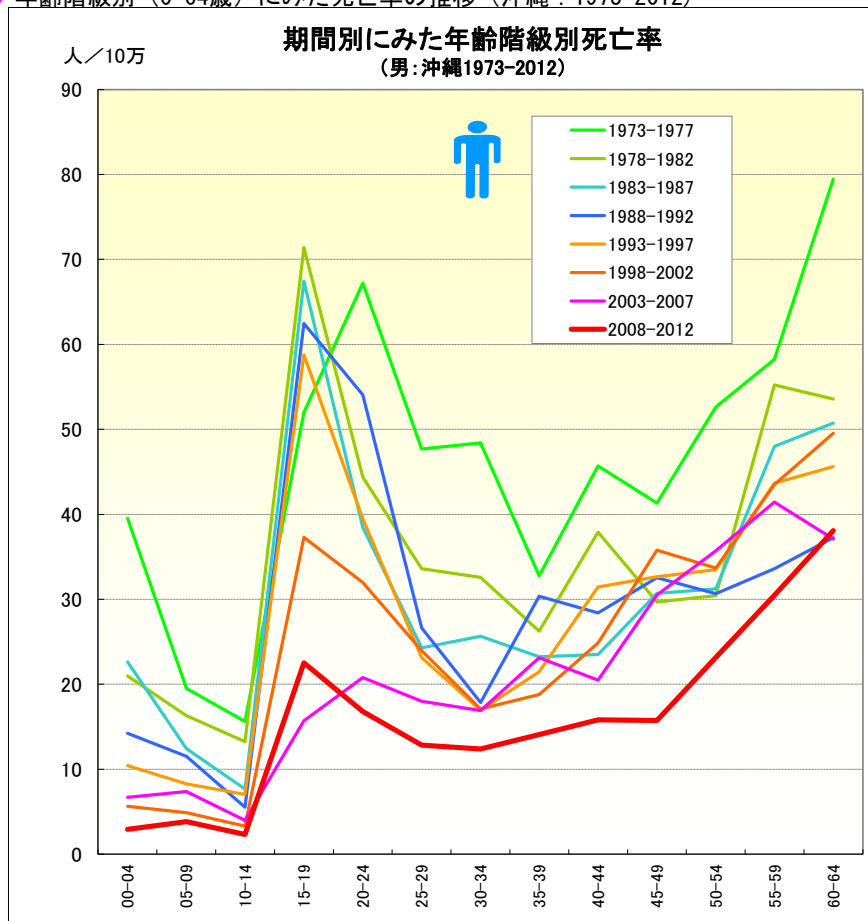
不慮の事故

● 年齢階級別にみた死亡率の推移（沖縄・全国：1973-2012）



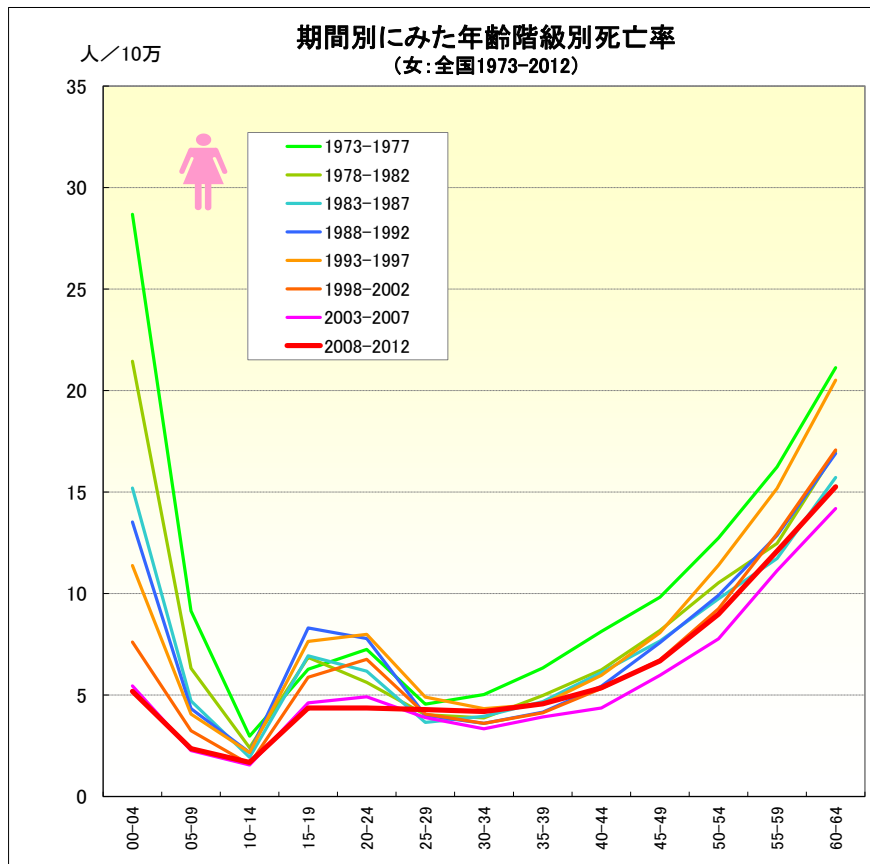
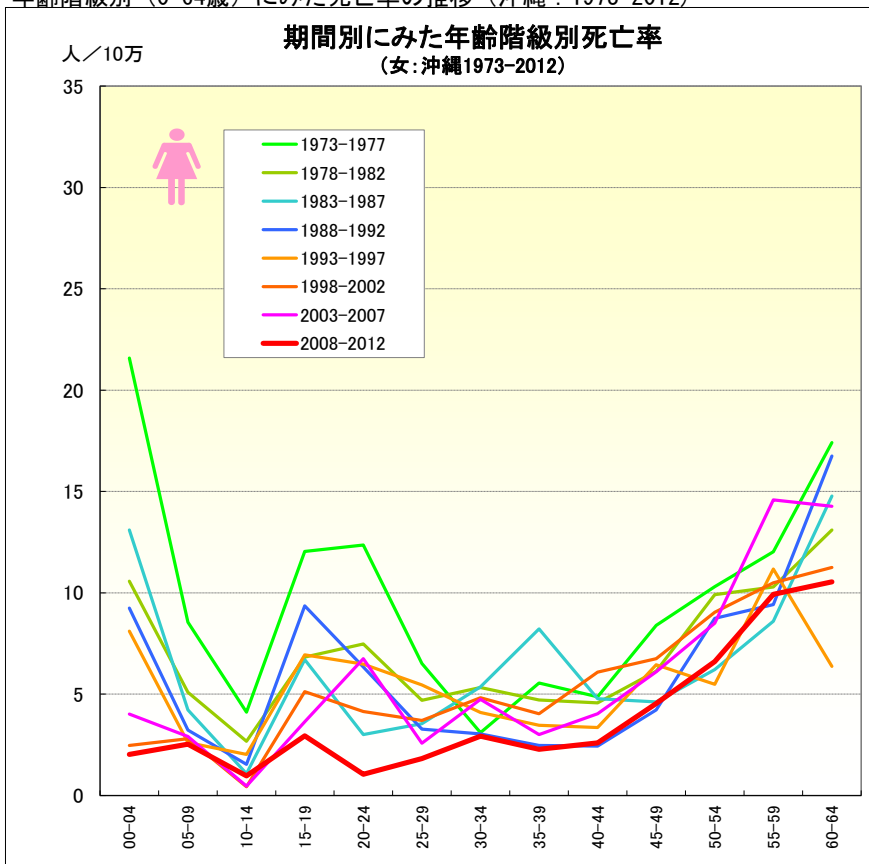
不慮の事故

● 年齢階級別（0-64歳）にみた死亡率の推移（沖縄：1973-2012）



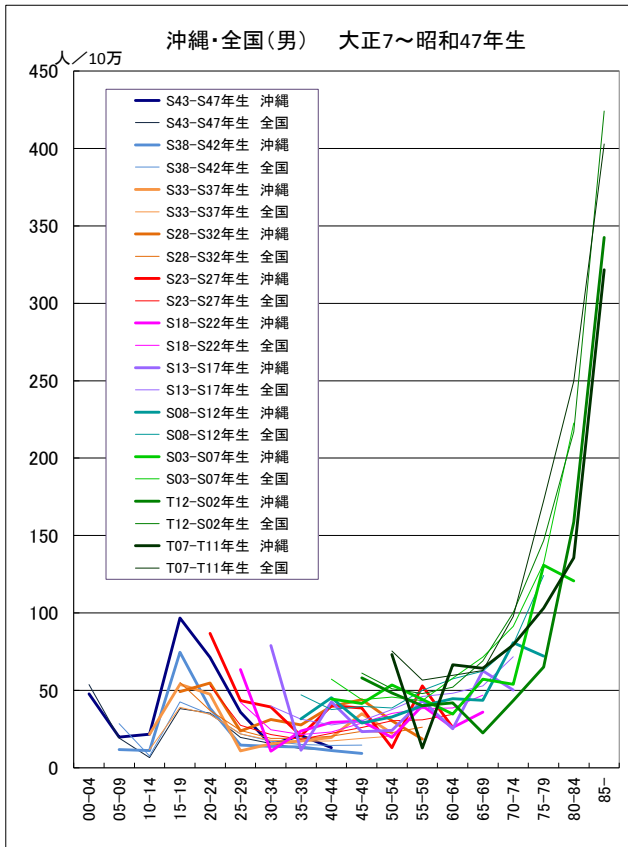
不慮の事故

● 年齢階級別 (0-64歳) にみた死亡率の推移 (沖縄: 1973-2012)

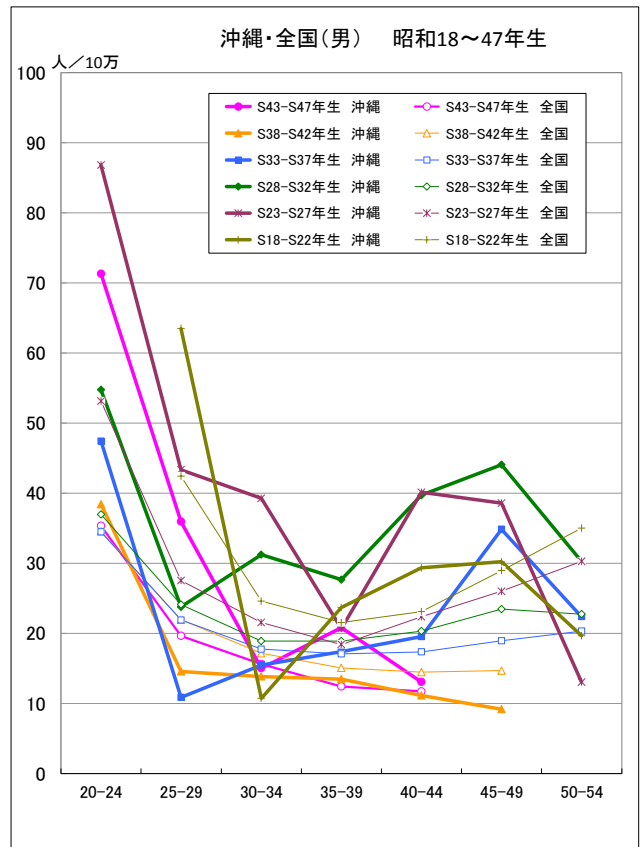


出生コホート別死亡率の推移（男） -1973-2012-

● 不慮の事故

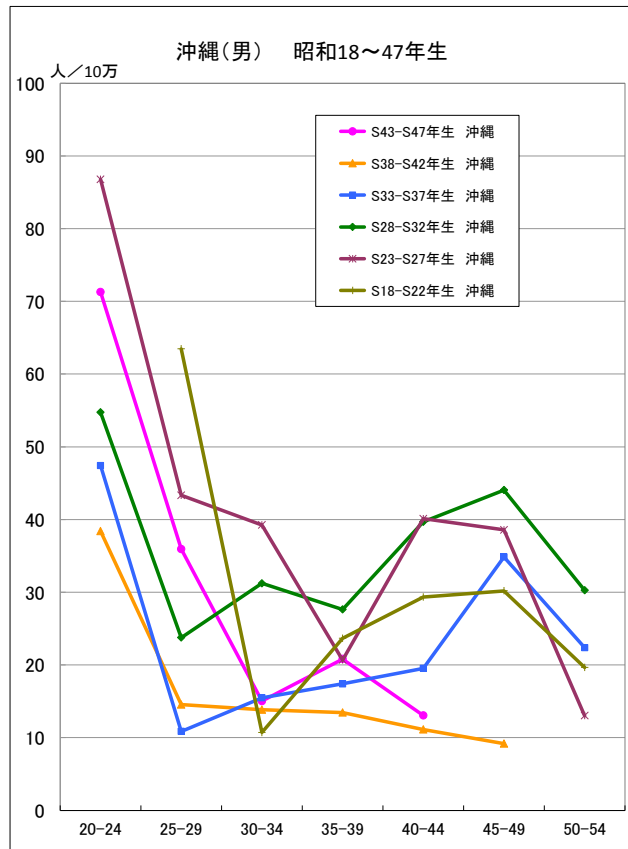


● 不慮の事故

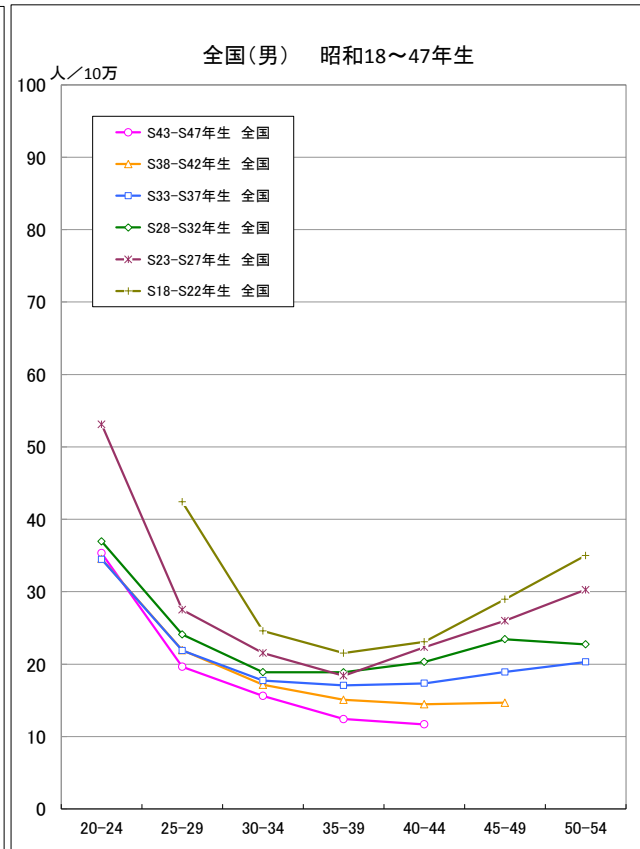


出生コホート別死亡率の推移（男） -1973-2012-

● 不慮の事故

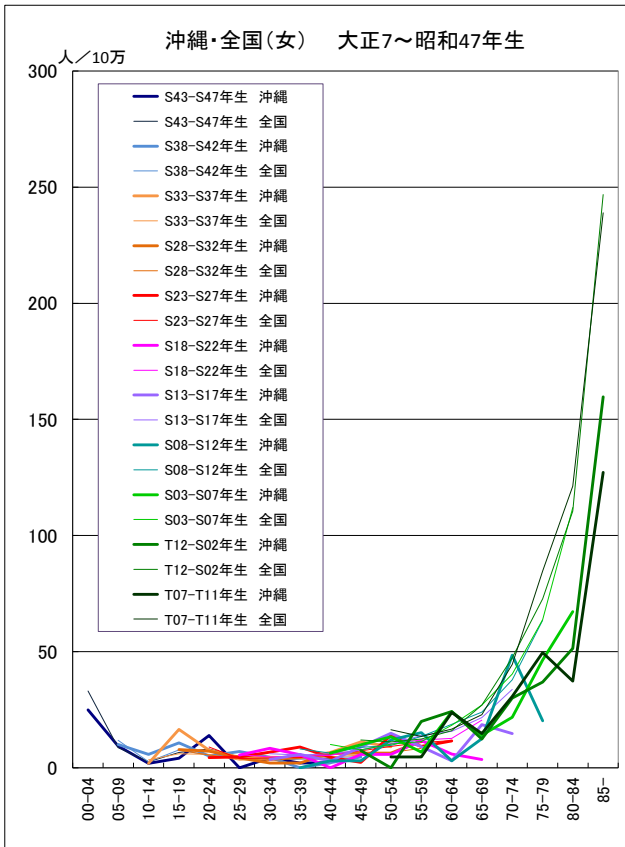


● 不慮の事故

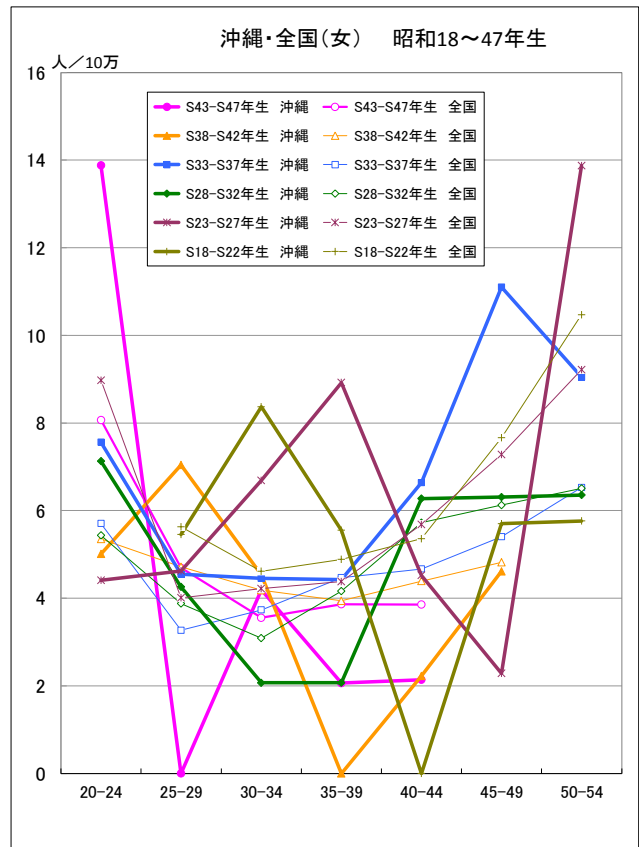


出生コホート別死亡率の推移（女） -1973-2012-

● 不慮の事故

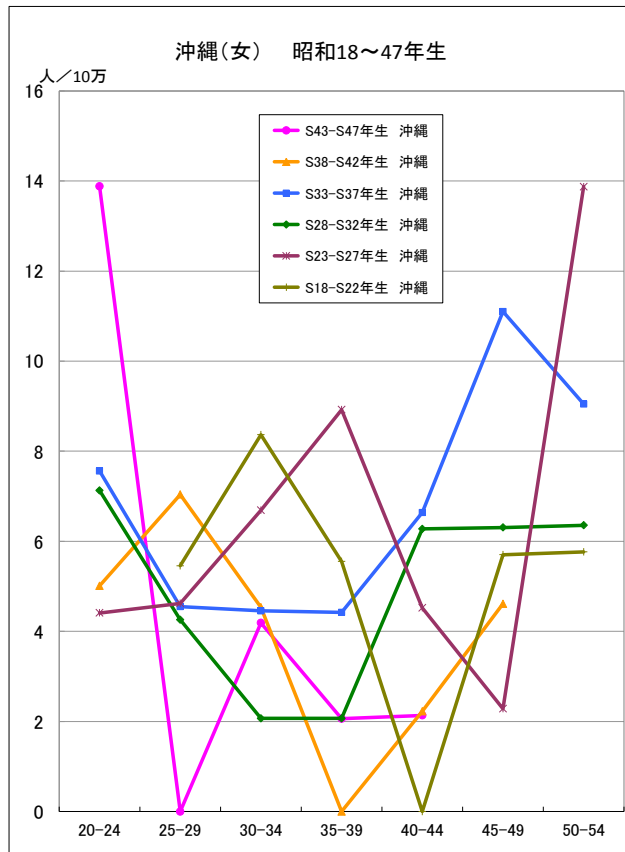


● 不慮の事故

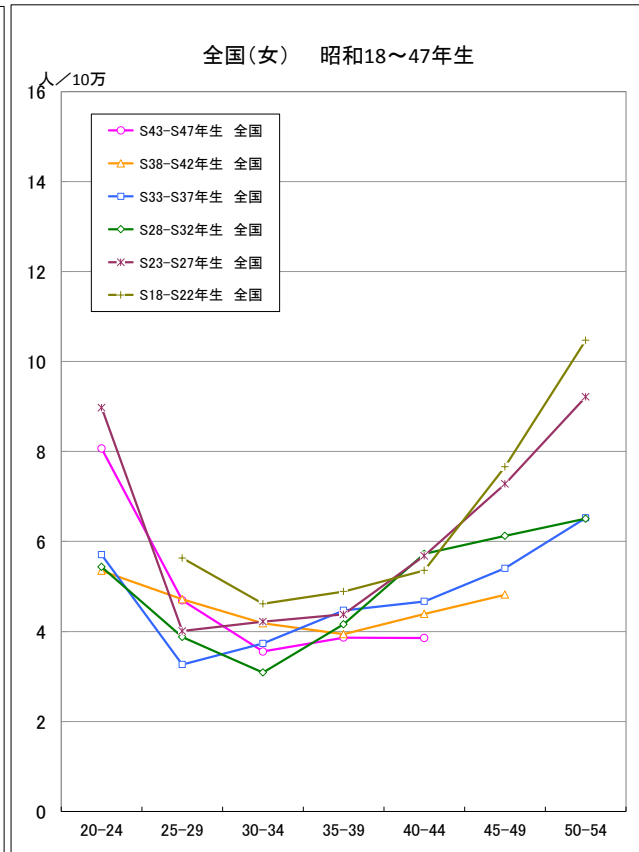


出生コホート別死亡率の推移（女） -1973-2012-

● 不慮の事故

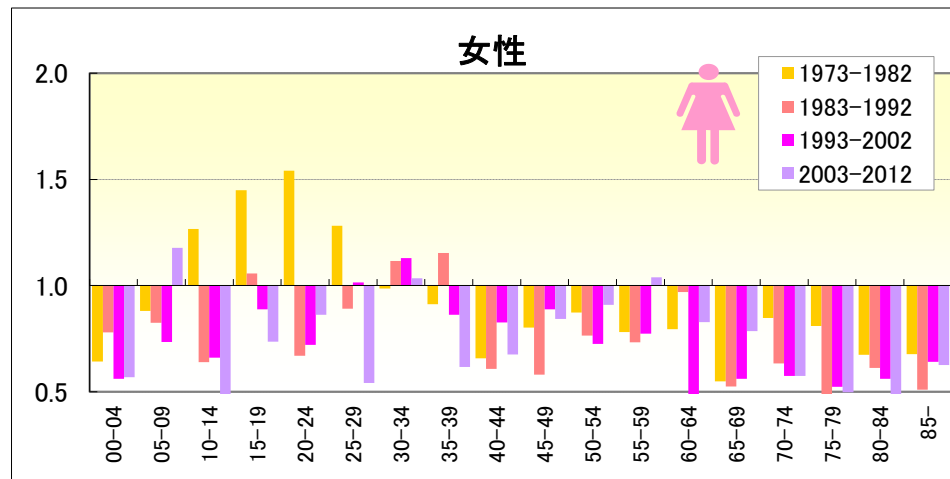
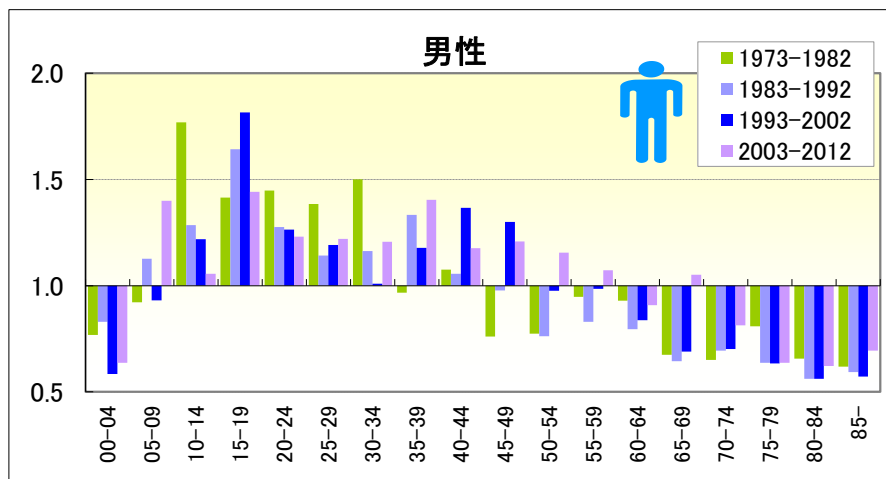


● 不慮の事故



不慮の事故

● 期間（10年）別にみた年齢階級別死亡率比の推移（沖縄／全国：1973-2012）

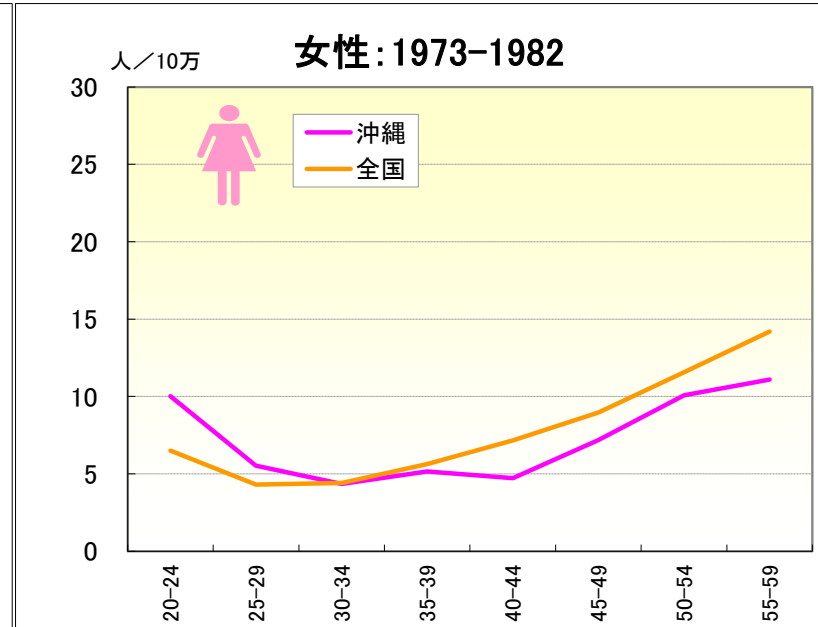
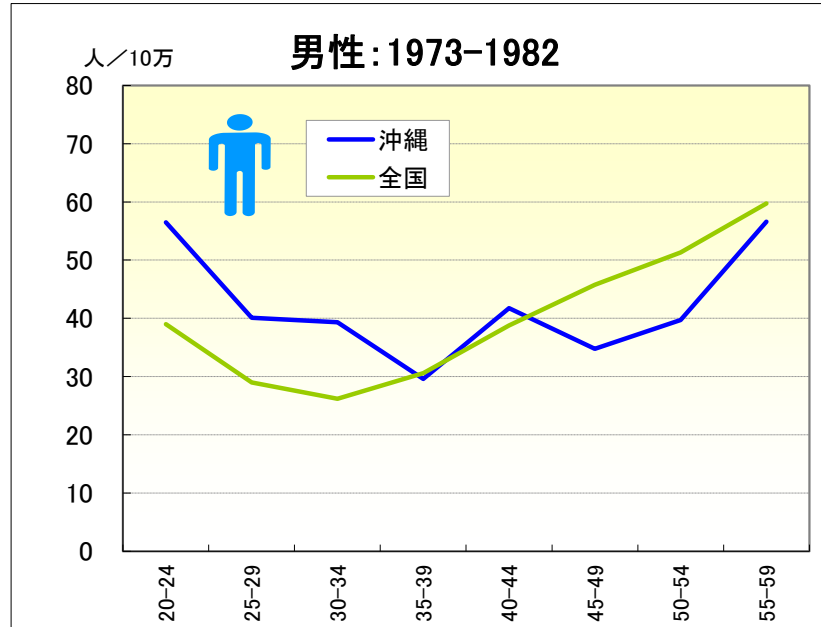


● 年齢階級別、性別*期間別死亡率比（沖縄：1973-2012年）

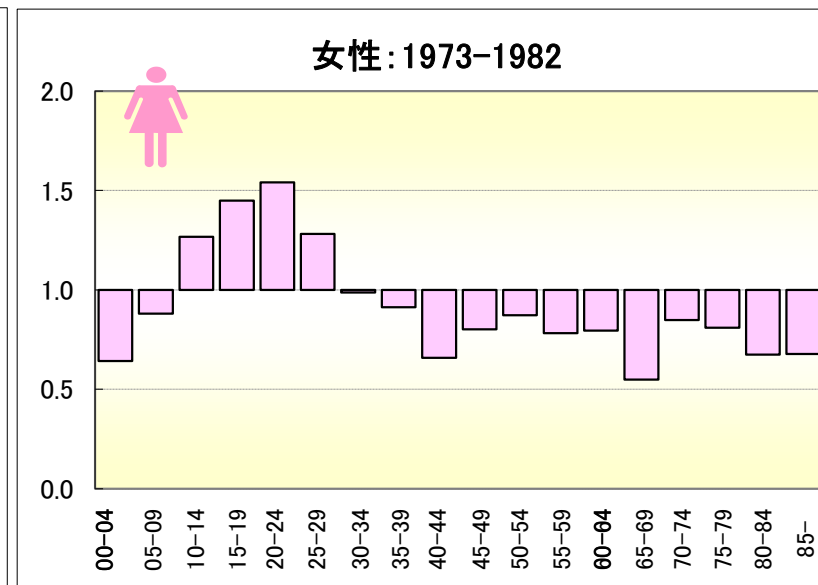
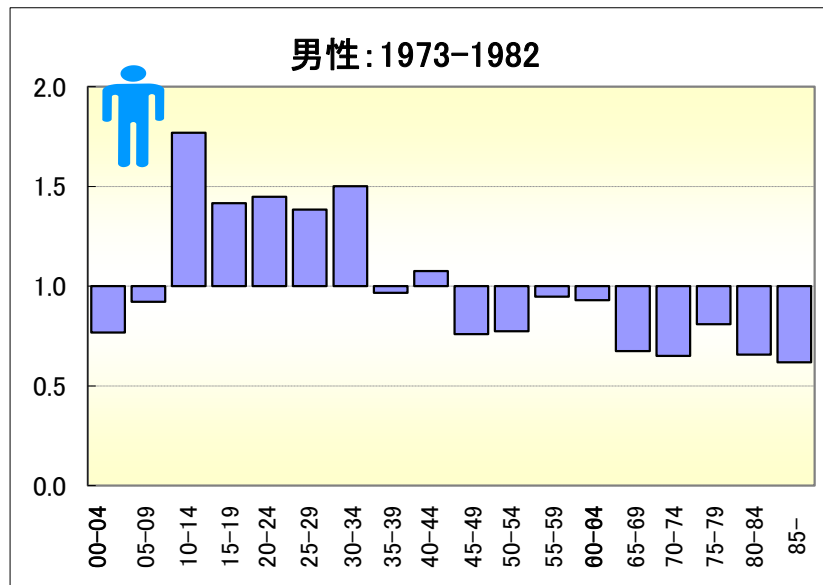
		総数	00-04	05-09	10-14	15-19	20-24	25-29	30-34	35-39	40-44	45-49	50-54	55-59	60-64	65-69	70-74	75-79	80-84	85-
男	1973-1977	0.97	0.87	0.87	1.63	1.13	1.55	1.47	1.54	0.89	0.99	0.82	0.89	0.84	1.01	0.65	0.74	0.94	0.66	0.53
	1978-1982	0.96	0.63	0.98	1.92	1.75	1.31	1.35	1.50	1.06	1.19	0.72	0.67	1.06	0.85	0.71	0.56	0.68	0.65	0.69
	1973-1982	0.96	0.77	0.92	1.77	1.42	1.45	1.38	1.50	0.97	1.08	0.76	0.77	0.95	0.93	0.67	0.65	0.81	0.66	0.62
	1983-1987	0.92	0.92	1.08	1.37	1.68	1.11	1.09	1.31	1.13	0.87	0.89	0.73	1.00	0.95	0.74	0.74	0.69	0.63	0.80
	1988-1992	0.86	0.71	1.19	1.19	1.61	1.43	1.20	0.99	1.52	1.24	1.07	0.80	0.70	0.68	0.56	0.65	0.59	0.51	0.45
	1983-1992	0.89	0.83	1.13	1.28	1.64	1.28	1.14	1.16	1.33	1.06	0.98	0.76	0.83	0.79	0.64	0.69	0.64	0.56	0.59
	1993-1997	0.82	0.65	1.01	1.52	1.96	1.26	1.09	0.98	1.18	1.41	1.20	0.89	0.91	0.74	0.70	0.60	0.55	0.55	0.68
	1998-2002	0.79	0.49	0.81	0.85	1.64	1.29	1.30	1.04	1.17	1.32	1.40	1.06	1.06	0.94	0.68	0.78	0.70	0.57	0.49
	1993-2002	0.81	0.58	0.93	1.22	1.82	1.26	1.19	1.01	1.18	1.37	1.30	0.98	0.98	0.84	0.69	0.70	0.63	0.56	0.57
	2003-2007	0.84	0.84	1.71	1.36	1.04	1.22	1.26	1.26	1.63	1.24	1.49	1.32	1.21	0.85	1.23	0.79	0.67	0.75	0.67
2008-2012	0.68	0.41	1.03	0.75	2.04	1.25	1.17	1.15	1.18	1.09	0.87	0.96	0.96	0.95	0.84	0.83	0.61	0.53	0.72	
2003-2012	0.76	0.64	1.40	1.06	1.44	1.23	1.22	1.21	1.40	1.18	1.21	1.15	1.07	0.91	1.05	0.81	0.64	0.62	0.69	
女	1973-1977	0.88	0.75	0.93	1.38	1.92	1.70	1.43	0.62	0.88	0.60	0.85	0.81	0.74	0.82	0.46	0.86	0.79	0.65	0.57
	1978-1982	0.84	0.49	0.80	1.10	1.00	1.33	1.16	1.37	0.95	0.73	0.75	0.94	0.82	0.77	0.64	0.83	0.83	0.69	0.76
	1973-1982	0.86	0.64	0.88	1.27	1.45	1.54	1.28	0.99	0.91	0.66	0.80	0.87	0.78	0.80	0.55	0.85	0.81	0.67	0.68
	1983-1987	0.74	0.86	0.90	0.56	0.97	0.49	0.97	1.36	1.76	0.78	0.60	0.64	0.73	0.94	0.58	0.63	0.46	0.61	0.67
	1988-1992	0.61	0.68	0.74	0.71	1.13	0.81	0.82	0.84	0.59	0.45	0.56	0.88	0.73	0.99	0.49	0.64	0.45	0.62	0.40
	1983-1992	0.67	0.78	0.82	0.64	1.06	0.67	0.89	1.12	1.15	0.61	0.58	0.76	0.73	0.97	0.53	0.63	0.45	0.61	0.51
	1993-1997	0.59	0.71	0.64	0.93	0.91	0.81	1.11	0.94	0.76	0.56	0.80	0.48	0.74	0.31	0.45	0.59	0.51	0.58	0.66
	1998-2002	0.59	0.33	0.86	0.27	0.87	0.61	0.91	1.34	0.98	1.14	1.00	0.98	0.81	0.66	0.68	0.56	0.53	0.54	0.62
	1993-2002	0.59	0.56	0.73	0.66	0.89	0.72	1.02	1.13	0.86	0.83	0.89	0.73	0.77	0.47	0.56	0.57	0.52	0.56	0.64
	2003-2007	0.59	0.74	1.28	0.30	0.79	1.37	0.66	1.42	0.77	0.92	1.02	1.10	1.31	1.01	0.79	0.64	0.62	0.43	0.57
2008-2012	0.50	0.39	1.07	0.58	0.67	0.24	0.43	0.70	0.50	0.49	0.68	0.73	0.82	0.69	0.78	0.52	0.40	0.49	0.68	
2003-2012	0.54	0.57	1.18	0.44	0.74	0.86	0.54	1.03	0.62	0.68	0.84	0.91	1.04	0.83	0.79	0.57	0.50	0.46	0.63	

不慮の事故

● 期間別にみた年齢階級別死亡率（沖縄、全国：1973-1982）

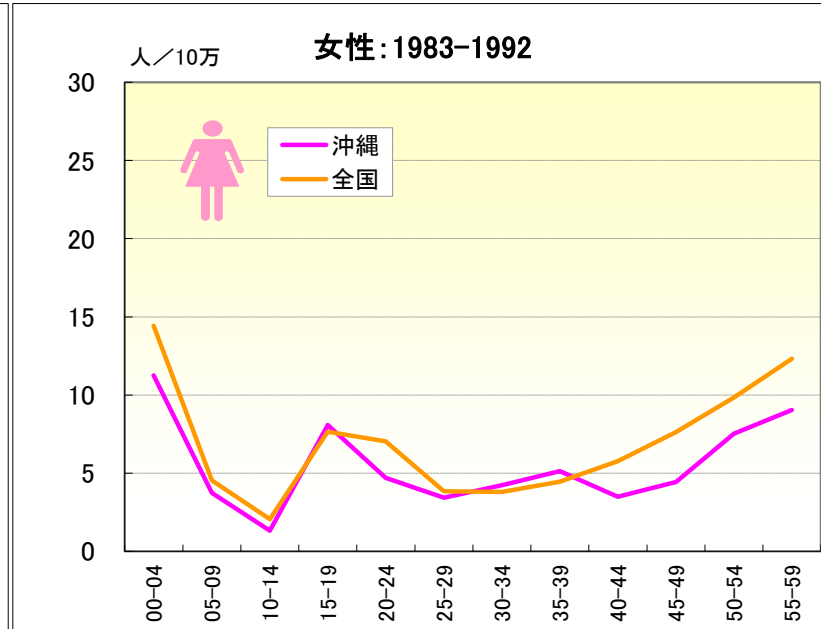
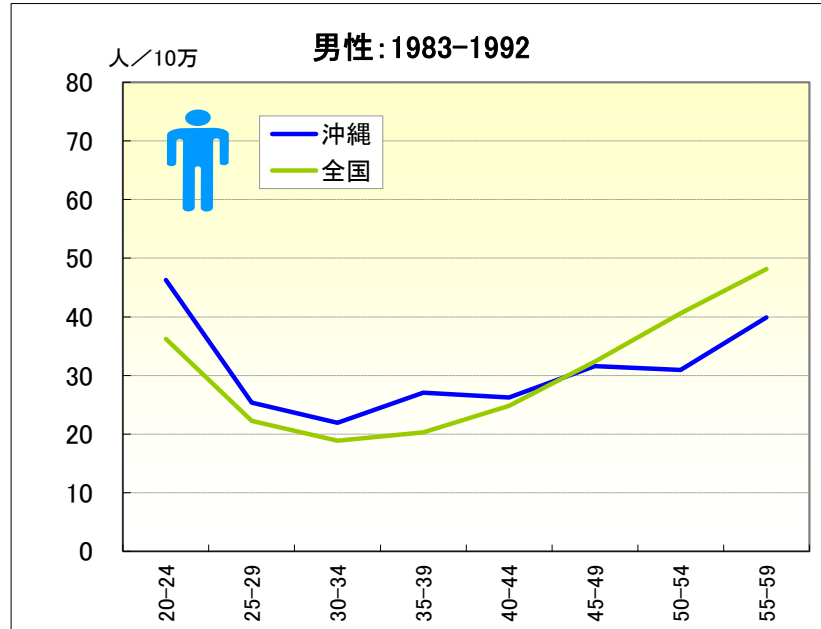


● 期間別にみた年齢階級別死亡率比（沖縄／全国：1973-1982）

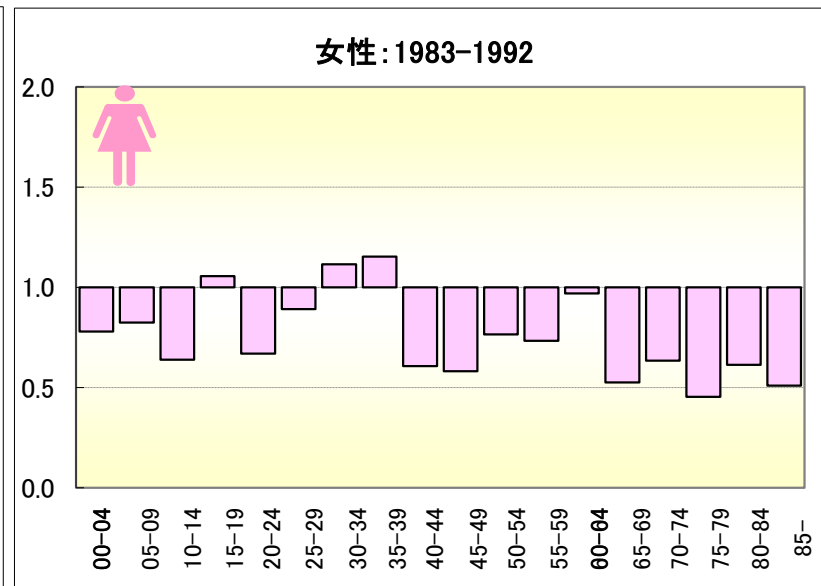
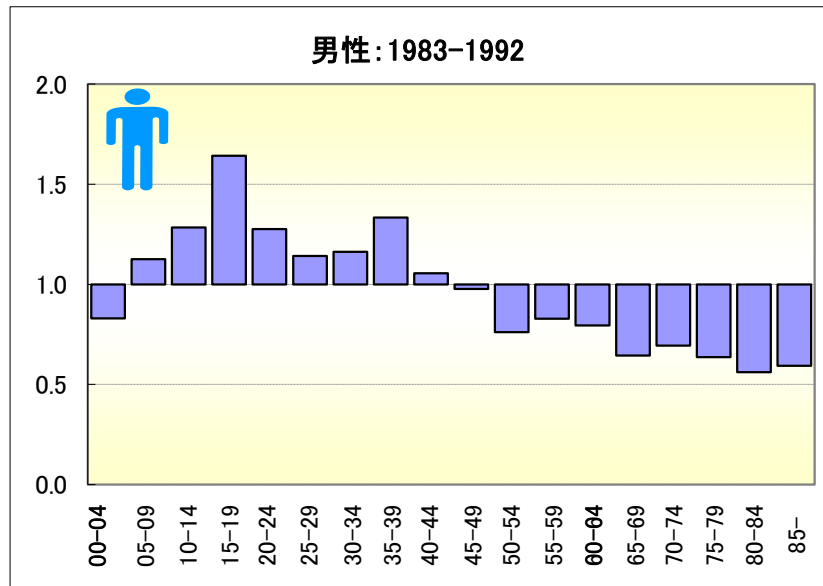


不慮の事故

● 期間別にみた年齢階級別死亡率（沖縄、全国：1983-1992）

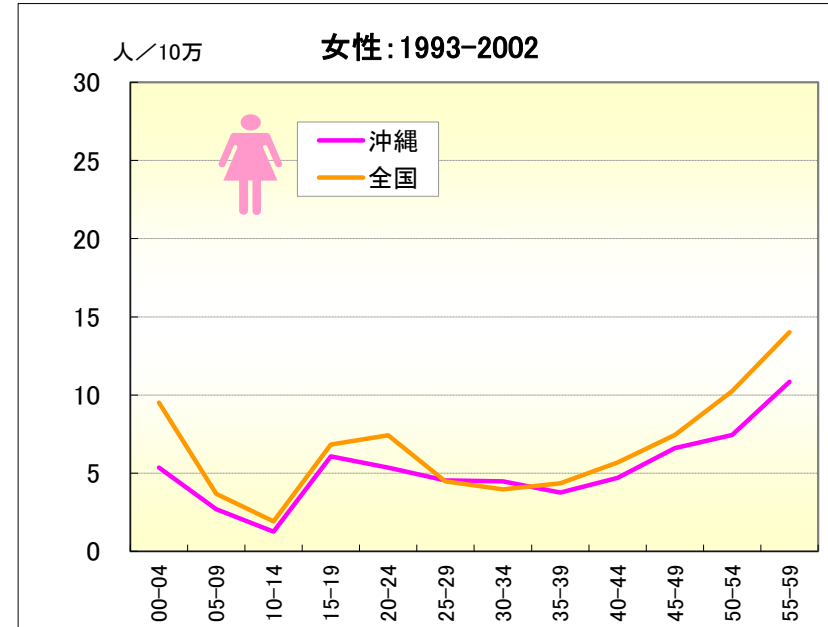
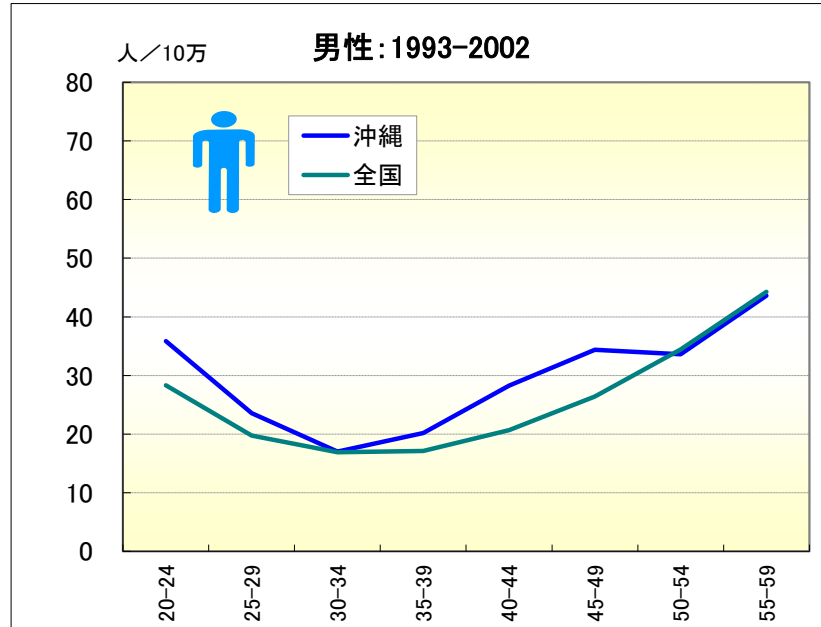


● 期間別にみた年齢階級別死亡率比（沖縄／全国：1983-1992）

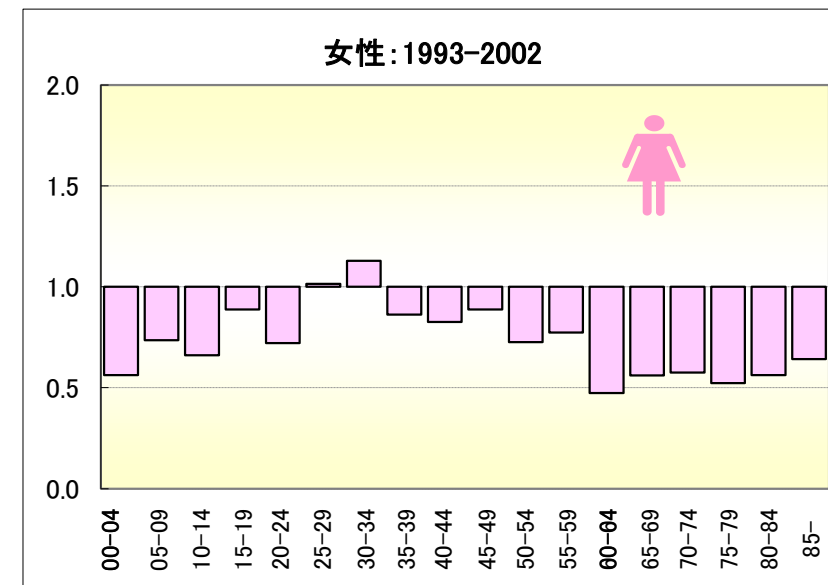
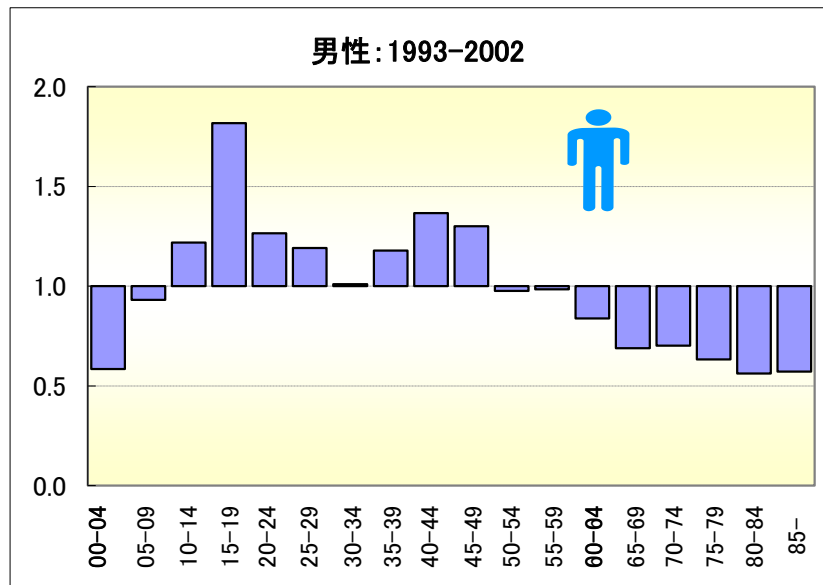


不慮の事故

● 期間別にみた年齢階級別死亡率（沖縄、全国：1993-2002）

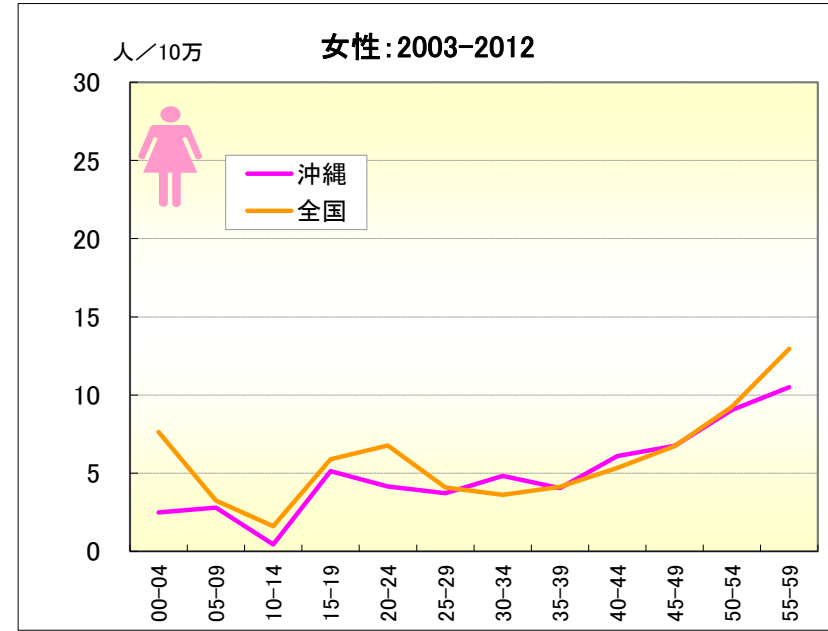
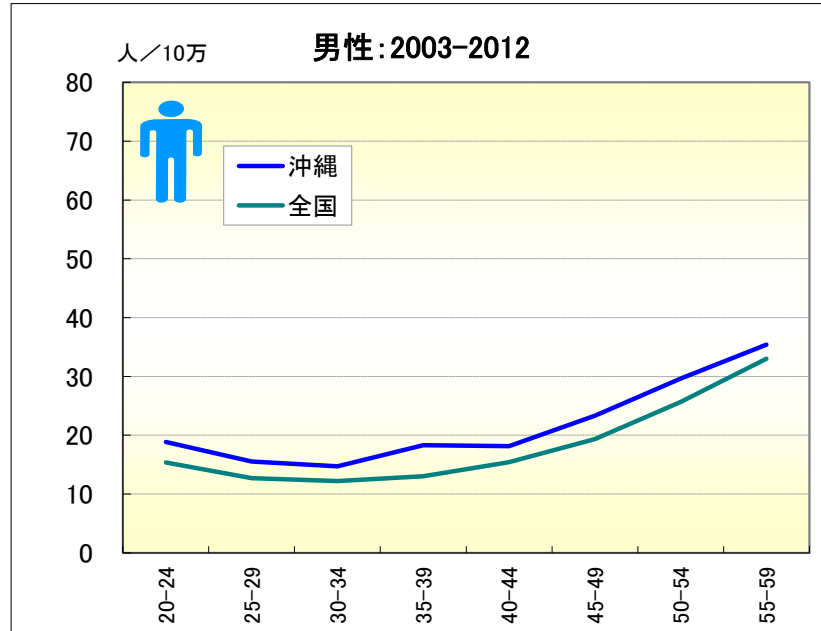


● 期間別にみた年齢階級別死亡率比（沖縄／全国：1993-2002）

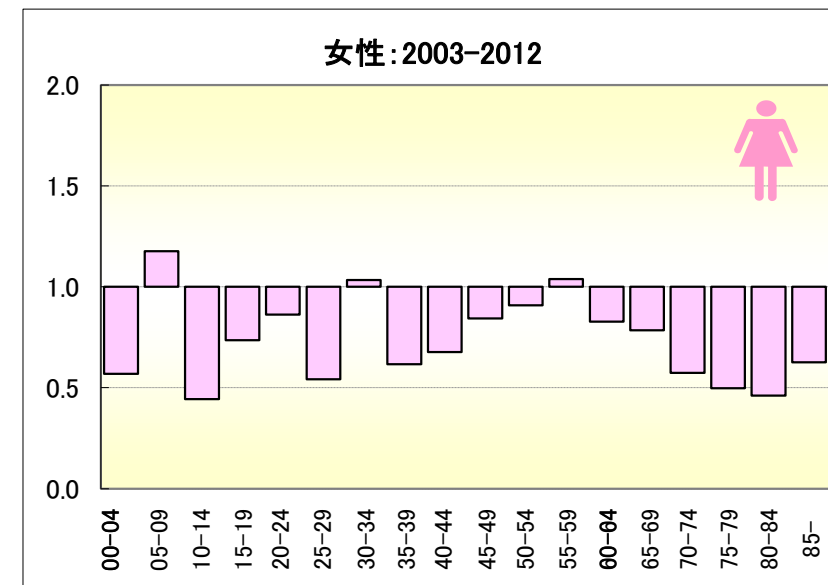
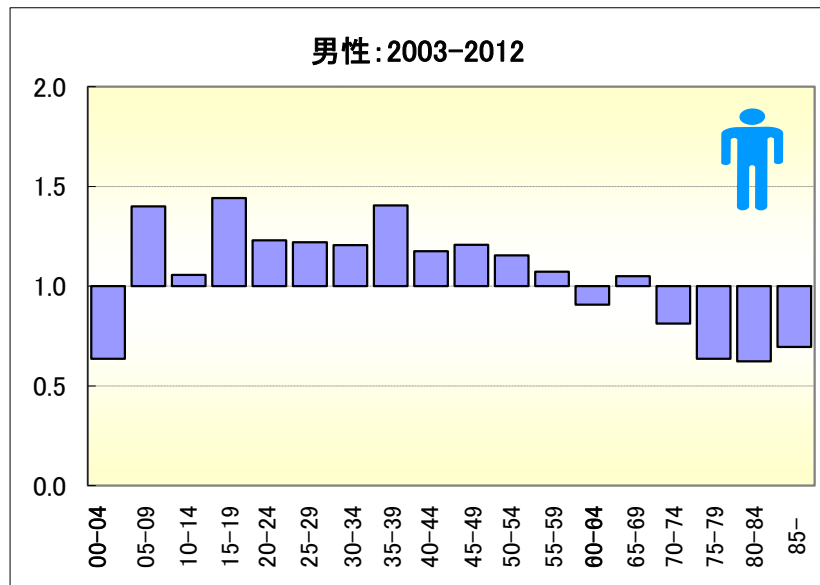


不慮の事故

● 期間別にみた年齢階級別死亡率（沖縄、全国：2003-2012）

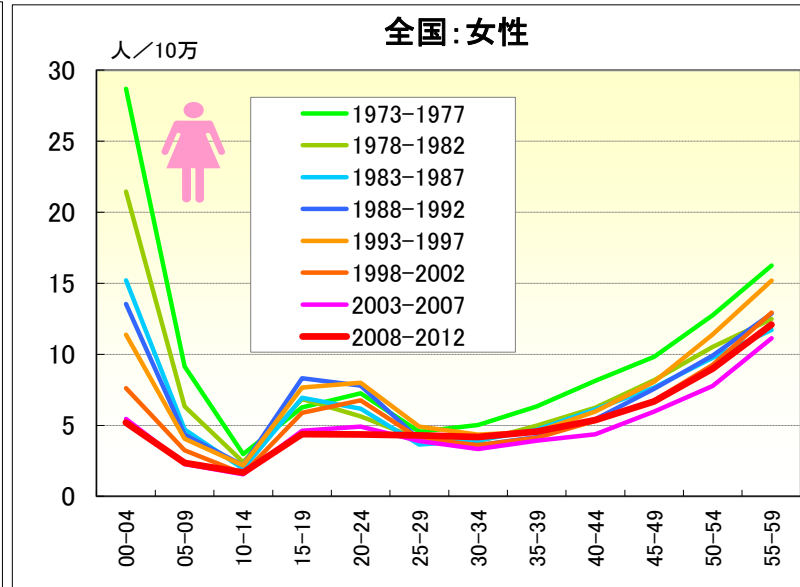
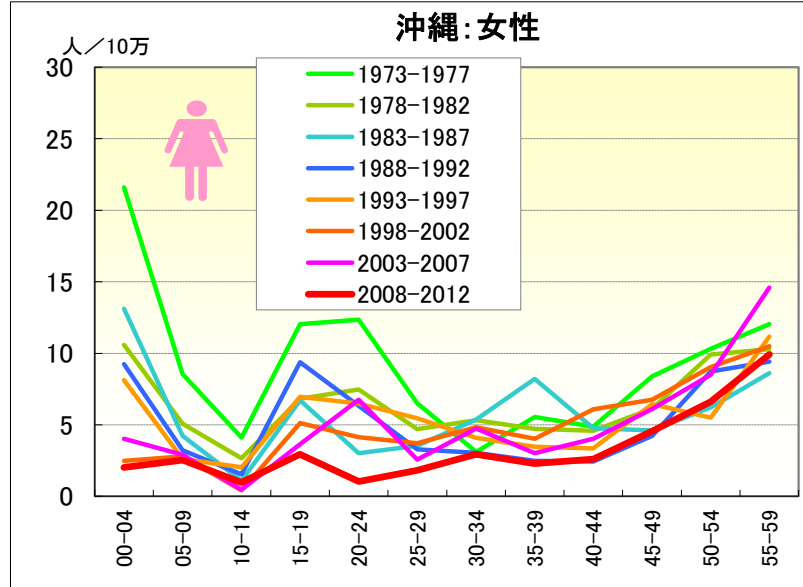
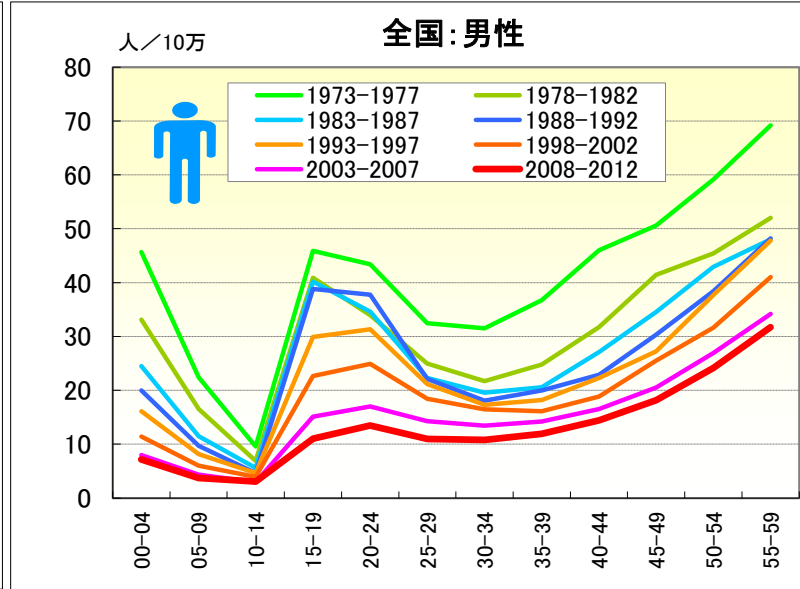
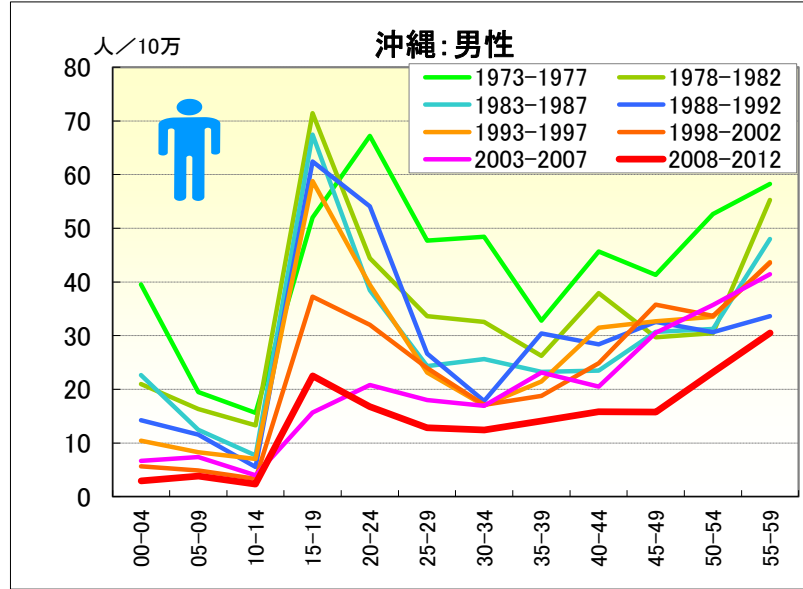


● 期間別にみた年齢階級別死亡率比（沖縄／全国：2003-2012）



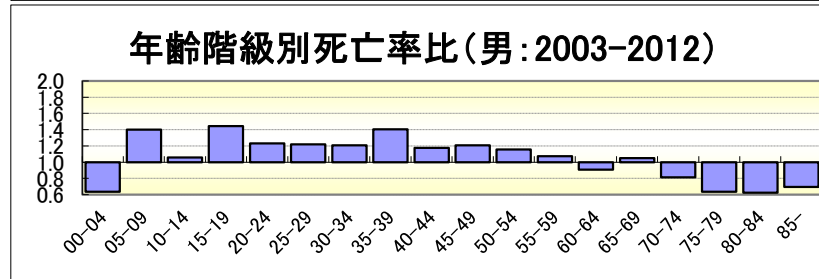
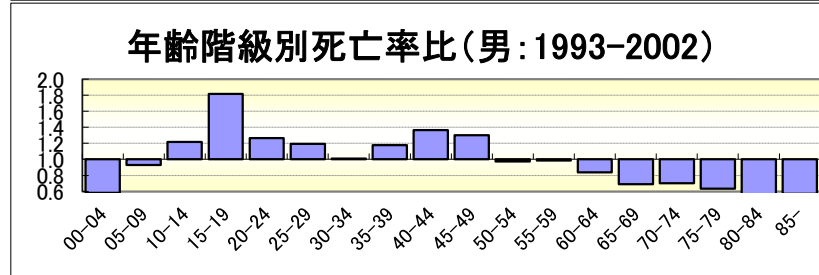
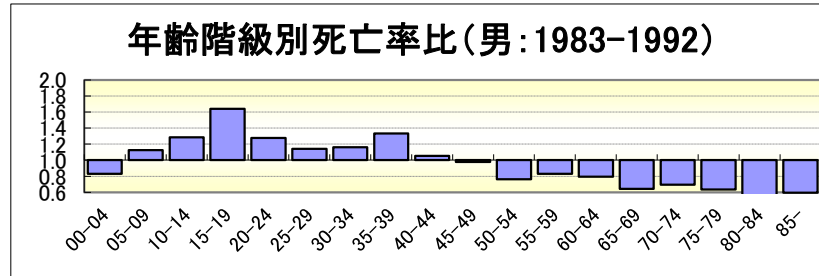
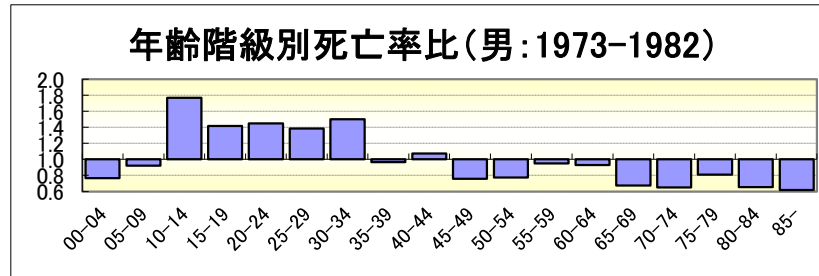
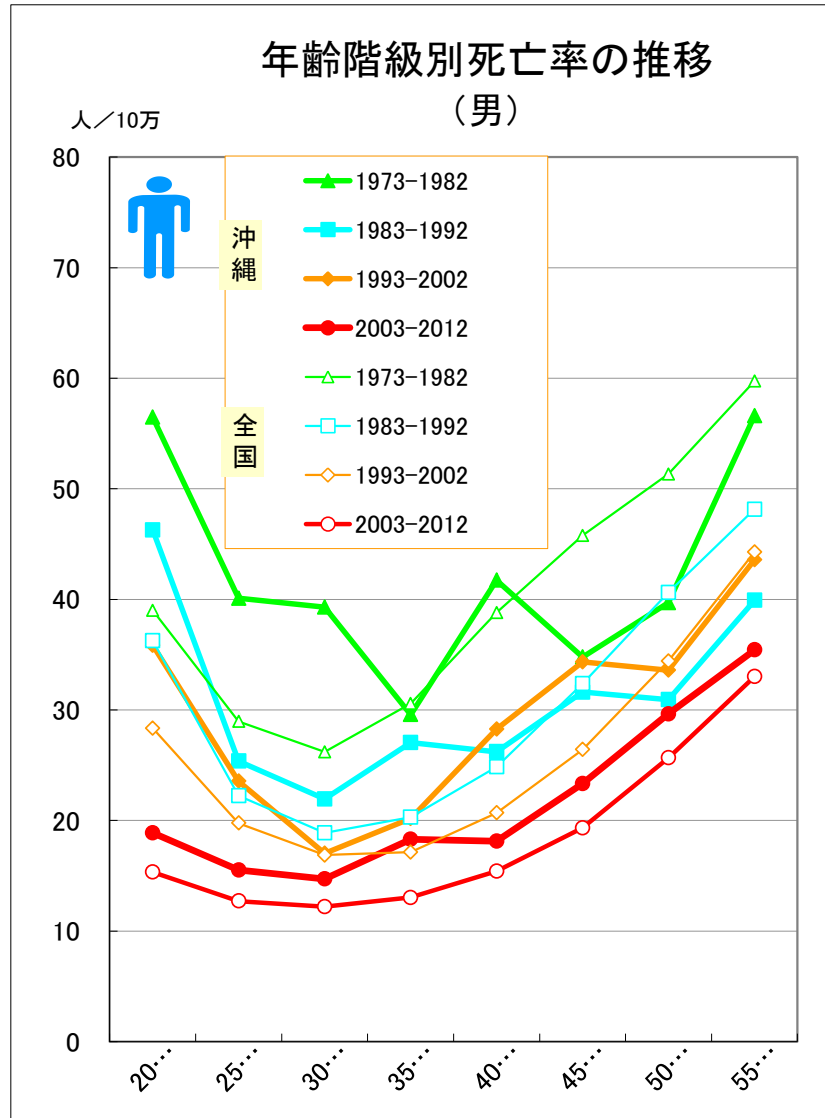
不慮の事故

● 期間（5年）別にみた年齢階級別死亡率の推移（沖縄・全国：1973-2012）



不慮の事故

● 期間（10年）別にみた年齢階級別死亡率および年齢階級別死亡率比の推移（沖縄・全国：男1973-2012）



不慮の事故

● 期間（10年）別にみた年齢階級別死亡率および年齢階級別死亡率比の推移（沖縄・全国：女1973-2012）

