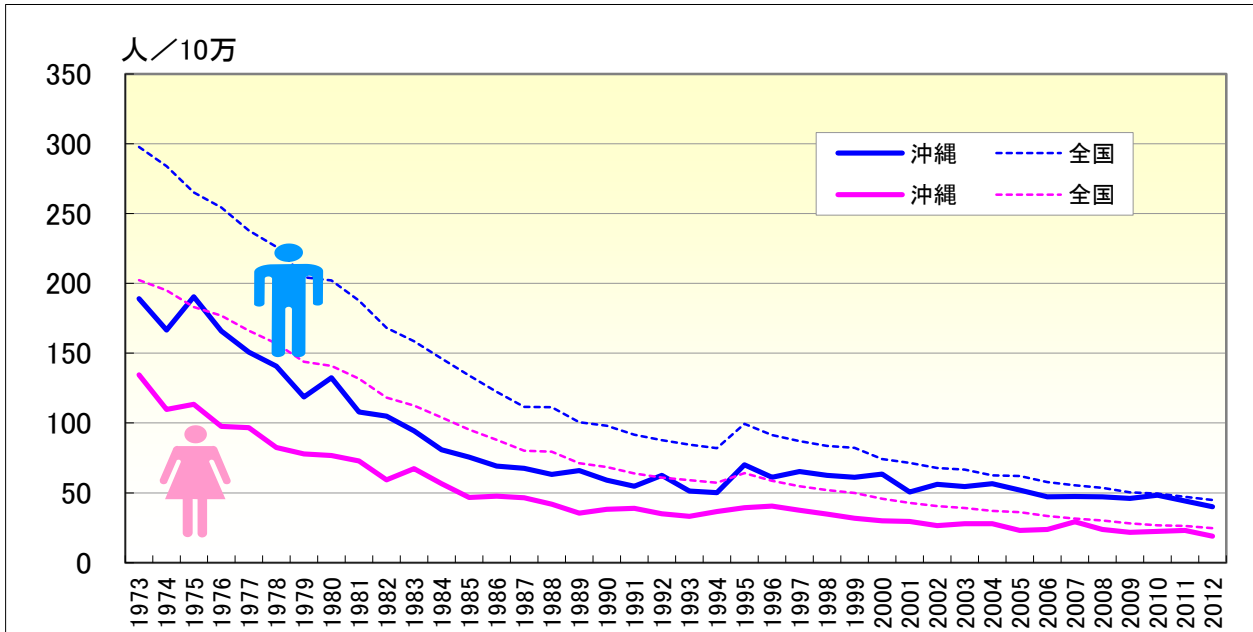


脳血管疾患

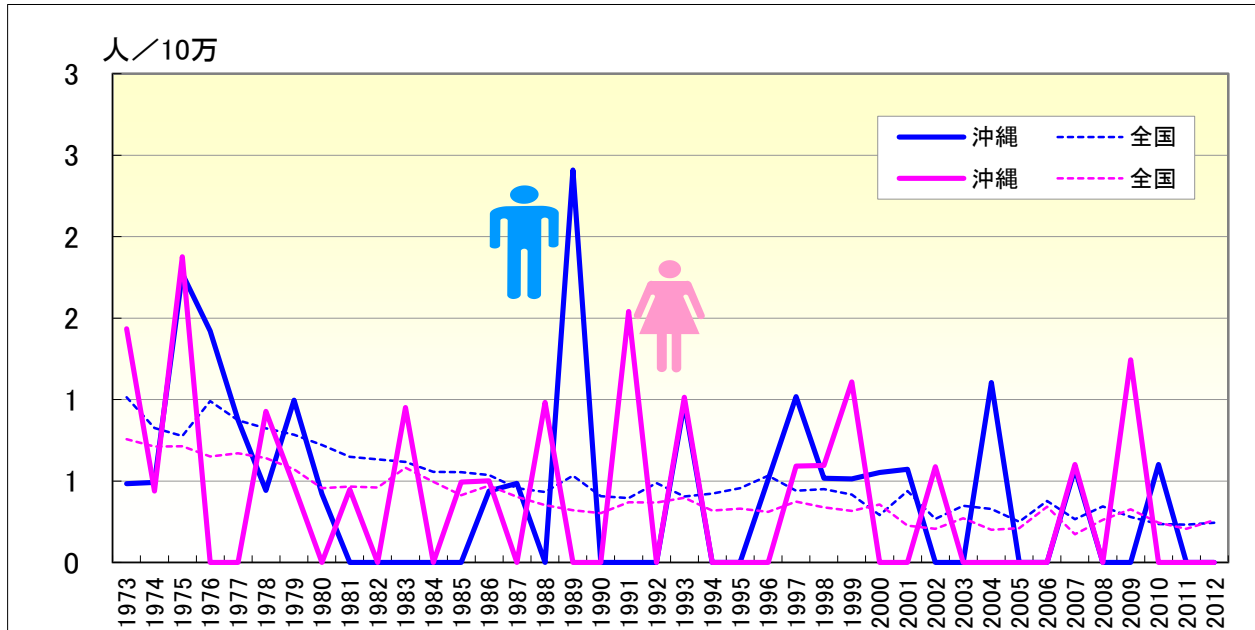
● 年齢調整死亡率の年次推移（沖縄、全国：1973-2012）



	男性				女性			
	粗死亡率		年齢調整死亡率		粗死亡率		年齢調整死亡率	
	沖縄	全国	沖縄	全国	沖縄	全国	沖縄	全国
1973	95.13	177.92	189.05	297.71	106.91	156.14	134.50	202.36
1974	85.28	172.49	166.53	283.91	91.84	153.84	109.84	194.93
1975	100.33	164.25	190.37	265.04	96.42	149.38	113.32	183.04
1976	90.08	161.10	165.92	254.42	85.38	148.12	97.59	176.79
1977	83.75	155.36	150.82	237.86	88.08	144.38	96.69	166.16
1978	78.71	151.31	140.64	226.09	79.94	141.26	82.34	156.84
1979	69.68	140.94	118.68	204.33	76.87	134.47	77.89	143.90
1980	77.70	142.71	132.33	201.97	77.96	136.45	76.68	140.91
1981	65.24	136.15	107.98	187.74	77.00	132.39	72.81	131.68
1982	65.72	126.05	104.89	168.11	63.35	124.00	59.27	118.18
1983	60.52	122.54	94.32	158.61	74.96	123.02	67.27	112.38
1984	53.20	116.07	80.74	146.19	63.70	118.28	56.54	103.92
1985	50.90	110.43	75.62	133.97	55.06	113.93	46.62	95.30
1986	48.94	103.95	69.08	122.35	58.08	109.67	47.61	88.00
1987	48.86	98.29	67.56	111.58	57.26	104.96	46.35	80.08
1988	47.77	101.40	63.13	111.42	56.46	109.34	41.99	79.53
1989	51.42	94.58	65.98	100.48	48.20	102.28	35.48	71.18
1990	47.98	95.59	59.08	97.93	54.08	102.95	38.20	68.56
1991	45.92	92.21	54.76	91.53	55.90	100.05	38.87	63.99
1992	53.97	91.40	62.43	87.74	50.72	99.59	35.10	60.92
1993	45.51	91.02	51.28	84.57	50.66	100.73	33.11	59.06
1994	45.31	91.24	50.08	81.99	56.22	102.37	36.65	57.13
1995	65.74	114.23	70.08	99.33	64.48	121.43	39.39	64.01
1996	59.48	108.78	61.15	91.29	66.05	116.19	40.50	58.53
1997	64.59	107.48	65.15	87.11	64.99	114.36	37.61	54.82
1998	64.58	106.88	62.42	83.69	63.49	113.06	34.68	51.89
1999	63.79	108.30	61.24	82.21	61.41	113.21	31.77	49.88
2000	68.60	102.67	63.48	74.20	62.35	108.23	29.97	45.74
2001	57.37	102.52	50.51	71.39	63.42	106.84	29.47	42.80
2002	64.97	101.04	56.12	67.73	57.23	105.61	26.62	40.59
2003	65.93	102.64	54.54	66.54	62.14	106.62	27.89	39.24
2004	69.91	99.92	56.49	62.46	64.80	104.54	28.02	37.01
2005	65.71	103.31	51.88	61.95	51.47	107.13	23.07	36.07
2006	61.39	99.64	47.06	57.77	56.86	103.54	23.87	33.39
2007	63.81	99.16	47.35	55.42	65.93	102.12	29.35	31.61
2008	64.58	99.51	47.08	53.60	58.05	101.83	23.70	30.24
2009	65.20	96.66	46.10	50.41	57.92	97.36	21.62	28.04
2010	70.96	97.75	48.38	49.46	61.77	97.63	22.35	26.86
2011	67.29	97.01	44.26	47.25	64.59	99.26	23.09	26.30
2012	63.51	95.59	39.97	44.79	56.01	97.44	18.92	24.64

脳血管疾患

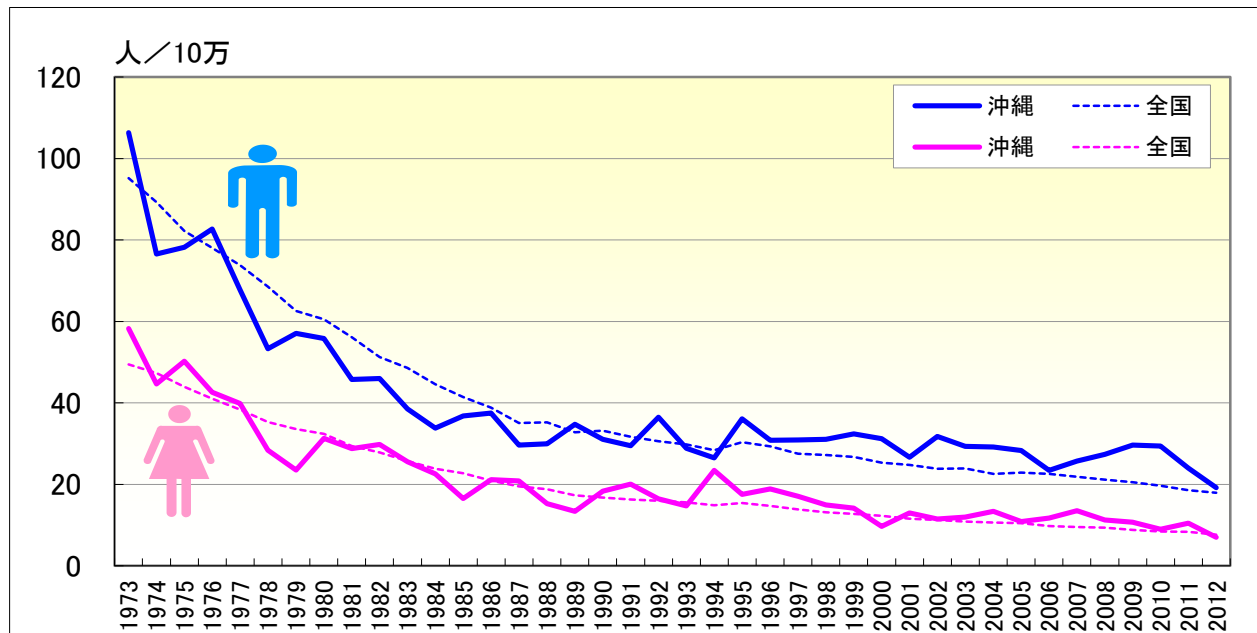
● 年齢調整死亡率（0-19歳）の年次推移（沖縄、全国：1973-2012）



	男性				女性			
	年齢調整死亡率		0-19年齢調整死亡率		年齢調整死亡率		0-19年齢調整死亡率	
	沖縄	全国	沖縄	全国	沖縄	全国	沖縄	全国
1973	189.05	297.71	0.49	1.02	134.50	202.36	1.44	0.76
1974	166.53	283.91	0.49	0.83	109.84	194.93	0.44	0.71
1975	190.37	265.04	1.77	0.78	113.32	183.04	1.88	0.71
1976	165.92	254.42	1.42	0.99	97.59	176.79		0.65
1977	150.82	237.86	0.87	0.87	96.69	166.16		0.67
1978	140.64	226.09	0.44	0.82	82.34	156.84	0.93	0.64
1979	118.68	204.33	1.00	0.78	77.89	143.90	0.47	0.57
1980	132.33	201.97	0.42	0.72	76.68	140.91		0.46
1981	107.98	187.74		0.65	72.81	131.68	0.45	0.47
1982	104.89	168.11		0.63	59.27	118.18		0.46
1983	94.32	158.61		0.62	67.27	112.38	0.95	0.58
1984	80.74	146.19		0.56	56.54	103.92		0.50
1985	75.62	133.97		0.56	46.62	95.30	0.49	0.41
1986	69.08	122.35	0.44	0.54	47.61	88.00	0.50	0.47
1987	67.56	111.58	0.49	0.46	46.35	80.08		0.40
1988	63.13	111.42		0.43	41.99	79.53	0.98	0.35
1989	65.98	100.48	2.41	0.53	35.48	71.18		0.32
1990	59.08	97.93		0.41	38.20	68.56		0.30
1991	54.76	91.53		0.40	38.87	63.99	1.54	0.37
1992	62.43	87.74		0.49	35.10	60.92		0.37
1993	51.28	84.57	0.98	0.41	33.11	59.06	1.01	0.40
1994	50.08	81.99		0.42	36.65	57.13		0.32
1995	70.08	99.33		0.46	39.39	64.01		0.33
1996	61.15	91.29	0.51	0.53	40.50	58.53		0.31
1997	65.15	87.11	1.02	0.44	37.61	54.82	0.59	0.37
1998	62.42	83.69	0.52	0.45	34.68	51.89	0.60	0.34
1999	61.24	82.21	0.51	0.42	31.77	49.88	1.11	0.32
2000	63.48	74.20	0.55	0.29	29.97	45.74		0.36
2001	50.51	71.39	0.57	0.44	29.47	42.80		0.23
2002	56.12	67.73		0.27	26.62	40.59	0.59	0.21
2003	54.54	66.54		0.35	27.89	39.24		0.27
2004	56.49	62.46	1.10	0.33	28.02	37.01		0.20
2005	51.88	61.95		0.25	23.07	36.07		0.21
2006	47.06	57.77		0.38	23.87	33.39		0.34
2007	47.35	55.42	0.58	0.27	29.35	31.61	0.60	0.17
2008	47.08	53.60		0.35	23.70	30.24		0.26
2009	46.10	50.41		0.28	21.62	28.04	1.24	0.33
2010	48.38	49.46	0.60	0.24	22.35	26.86		0.24
2011	44.26	47.25		0.23	23.09	26.30		0.21
2012	39.97	44.79		0.24	18.92	24.64		0.26

脳血管疾患

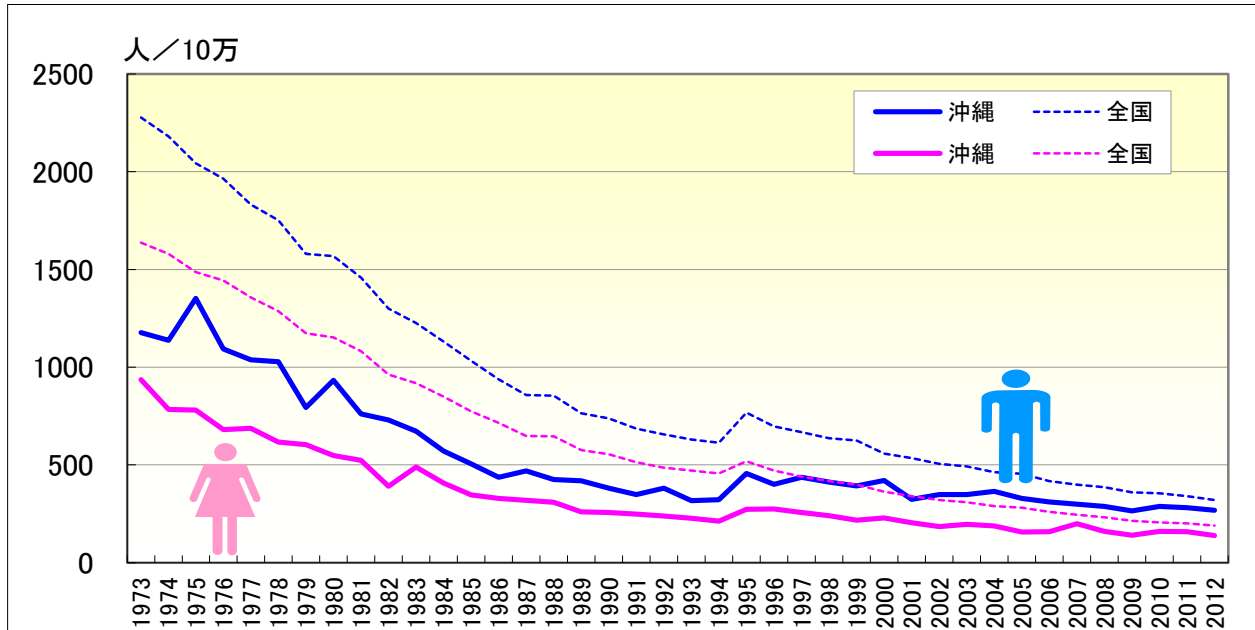
● 年齢調整死亡率（20-64歳）の年次推移（沖縄、全国：1973-2012）



	男性				女性			
	年齢調整死亡率		20-64年齢調整死亡率		年齢調整死亡率		20-64年齢調整死亡率	
	沖縄	全国	沖縄	全国	沖縄	全国	沖縄	全国
1973	189.05	297.71	106.31	95.16	134.50	202.36	58.22	49.43
1974	166.53	283.91	76.57	89.24	109.84	194.93	44.61	47.33
1975	190.37	265.04	78.22	82.24	113.32	183.04	50.21	43.91
1976	165.92	254.42	82.69	78.05	97.59	176.79	42.60	41.01
1977	150.82	237.86	67.76	73.80	96.69	166.16	39.86	38.38
1978	140.64	226.09	53.29	68.54	82.34	156.84	28.35	35.26
1979	118.68	204.33	57.06	62.58	77.89	143.90	23.51	33.56
1980	132.33	201.97	55.78	60.52	76.68	140.91	31.29	32.37
1981	107.98	187.74	45.75	56.14	72.81	131.68	28.79	29.41
1982	104.89	168.11	45.97	51.27	59.27	118.18	29.77	27.79
1983	94.32	158.61	38.50	48.61	67.27	112.38	25.58	25.74
1984	80.74	146.19	33.77	44.55	56.54	103.92	22.53	23.79
1985	75.62	133.97	36.76	41.40	46.62	95.30	16.50	22.69
1986	69.08	122.35	37.48	38.79	47.61	88.00	21.14	20.91
1987	67.56	111.58	29.60	35.03	46.35	80.08	20.86	19.51
1988	63.13	111.42	29.97	35.25	41.99	79.53	15.22	18.77
1989	65.98	100.48	34.75	32.81	35.48	71.18	13.35	17.30
1990	59.08	97.93	31.02	33.15	38.20	68.56	18.32	16.75
1991	54.76	91.53	29.51	31.64	38.87	63.99	20.07	16.29
1992	62.43	87.74	36.46	30.55	35.10	60.92	16.45	15.99
1993	51.28	84.57	28.88	29.80	33.11	59.06	14.74	15.59
1994	50.08	81.99	26.52	28.36	36.65	57.13	23.46	14.83
1995	70.08	99.33	36.08	30.36	39.39	64.01	17.54	15.43
1996	61.15	91.29	30.81	29.35	40.50	58.53	18.86	14.74
1997	65.15	87.11	30.86	27.49	37.61	54.82	17.10	13.85
1998	62.42	83.69	31.06	27.18	34.68	51.89	14.98	13.10
1999	61.24	82.21	32.41	26.75	31.77	49.88	14.15	12.75
2000	63.48	74.20	31.18	25.31	29.97	45.74	9.66	12.27
2001	50.51	71.39	26.67	24.73	29.47	42.80	12.99	11.55
2002	56.12	67.73	31.76	23.84	26.62	40.59	11.49	11.26
2003	54.54	66.54	29.34	23.87	27.89	39.24	11.99	10.86
2004	56.49	62.46	29.14	22.56	28.02	37.01	13.34	10.61
2005	51.88	61.95	28.32	22.92	23.07	36.07	10.86	10.46
2006	47.06	57.77	23.39	22.55	23.87	33.39	11.70	9.72
2007	47.35	55.42	25.67	21.84	29.35	31.61	13.50	9.52
2008	47.08	53.60	27.35	21.12	23.70	30.24	11.24	9.34
2009	46.10	50.41	29.62	20.55	21.62	28.04	10.68	8.79
2010	48.38	49.46	29.40	19.68	22.35	26.86	8.94	8.40
2011	44.26	47.25	23.96	18.56	23.09	26.30	10.50	8.38
2012	39.97	44.79	19.15	17.93	18.92	24.64	7.01	7.61

脳血管疾患

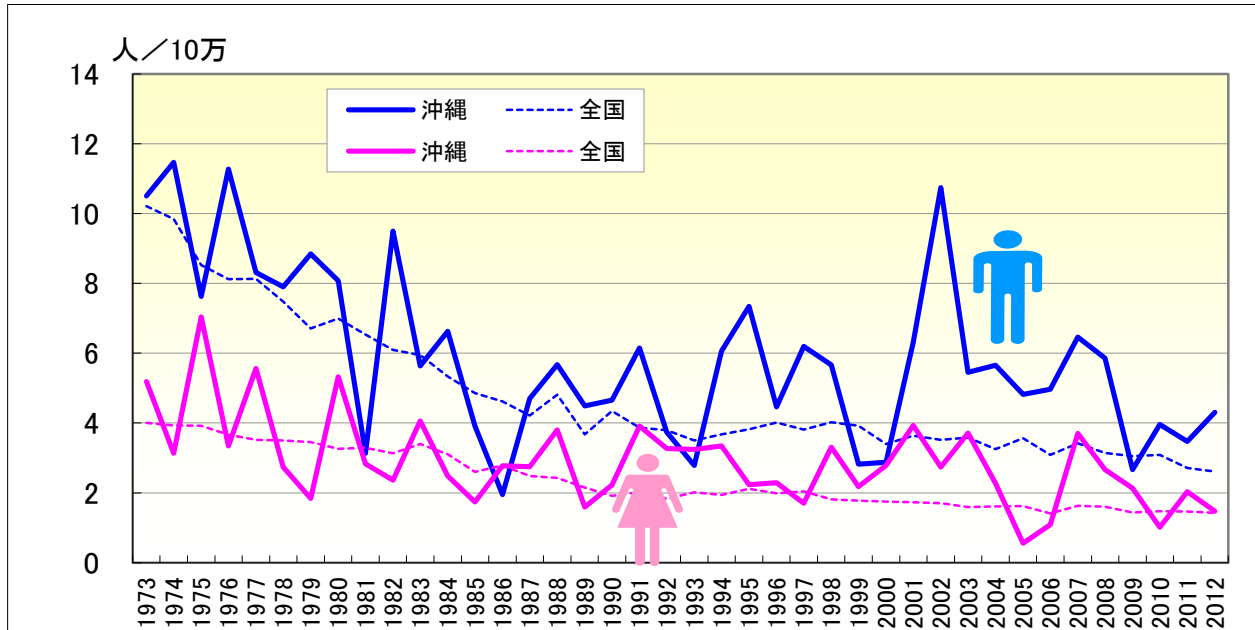
● 年齢調整死亡率（65歳以上）の年次推移（沖縄、全国：1973-2012）



	男性				女性			
	年齢調整死亡率		65-年齢調整死亡率		年齢調整死亡率		65-年齢調整死亡率	
	沖縄	全国	沖縄	全国	沖縄	全国	沖縄	全国
1973	189.05	297.71	1177.48	2277.23	134.50	202.36	936.93	1637.14
1974	166.53	283.91	1137.15	2180.91	109.84	194.93	784.28	1578.84
1975	190.37	265.04	1351.37	2042.26	113.32	183.04	780.87	1485.51
1976	165.92	254.42	1092.97	1965.05	97.59	176.79	680.45	1443.11
1977	150.82	237.86	1037.99	1832.42	96.69	166.16	687.98	1357.16
1978	140.64	226.09	1027.05	1751.10	82.34	156.84	616.21	1286.69
1979	118.68	204.33	794.06	1578.76	77.89	143.90	603.41	1173.51
1980	132.33	201.97	933.28	1568.52	76.68	140.91	547.47	1152.22
1981	107.98	187.74	761.06	1458.77	72.81	131.68	524.06	1081.59
1982	104.89	168.11	730.34	1300.23	59.27	118.18	390.45	962.36
1983	94.32	158.61	673.38	1225.34	67.27	112.38	488.74	918.80
1984	80.74	146.19	571.60	1130.89	56.54	103.92	406.87	849.86
1985	75.62	133.97	505.30	1032.86	46.62	95.30	346.32	774.30
1986	69.08	122.35	437.54	937.44	47.61	88.00	328.53	714.99
1987	67.56	111.58	469.16	856.99	46.35	80.08	319.58	647.87
1988	63.13	111.42	426.07	854.24	41.99	79.53	308.39	647.14
1989	65.98	100.48	418.81	764.04	35.48	71.18	259.94	576.20
1990	59.08	97.93	381.28	738.05	38.20	68.56	256.68	554.55
1991	54.76	91.53	348.97	685.95	38.87	63.99	248.71	513.51
1992	62.43	87.74	381.30	655.98	35.10	60.92	238.11	486.02
1993	51.28	84.57	316.92	630.40	33.11	59.06	226.54	470.56
1994	50.08	81.99	321.91	614.16	36.65	57.13	211.81	456.78
1995	70.08	99.33	456.52	767.68	39.39	64.01	272.61	518.89
1996	61.15	91.29	400.95	696.72	40.50	58.53	275.55	470.67
1997	65.15	87.11	437.34	668.06	37.61	54.82	256.72	440.35
1998	62.42	83.69	411.51	637.19	34.68	51.89	241.19	416.86
1999	61.24	82.21	392.35	625.72	31.77	49.88	216.89	399.91
2000	63.48	74.20	420.79	558.13	29.97	45.74	229.07	363.09
2001	50.51	71.39	323.59	534.35	29.47	42.80	204.75	339.64
2002	56.12	67.73	348.75	505.14	26.62	40.59	184.75	320.35
2003	54.54	66.54	347.90	493.34	27.89	39.24	195.52	309.66
2004	56.49	62.46	364.67	462.27	28.02	37.01	188.85	290.07
2005	51.88	61.95	328.48	455.46	23.07	36.07	156.18	282.02
2006	47.06	57.77	311.42	417.47	23.87	33.39	158.90	260.35
2007	47.35	55.42	299.34	399.54	29.35	31.61	199.07	244.99
2008	47.08	53.60	288.42	386.20	23.70	30.24	160.01	232.86
2009	46.10	50.41	265.73	359.33	21.62	28.04	140.13	214.92
2010	48.38	49.46	287.18	355.48	22.35	26.86	160.68	206.10
2011	44.26	47.25	281.37	341.01	23.09	26.30	158.51	201.01
2012	39.97	44.79	268.68	321.20	18.92	24.64	139.23	189.57

脳血管疾患

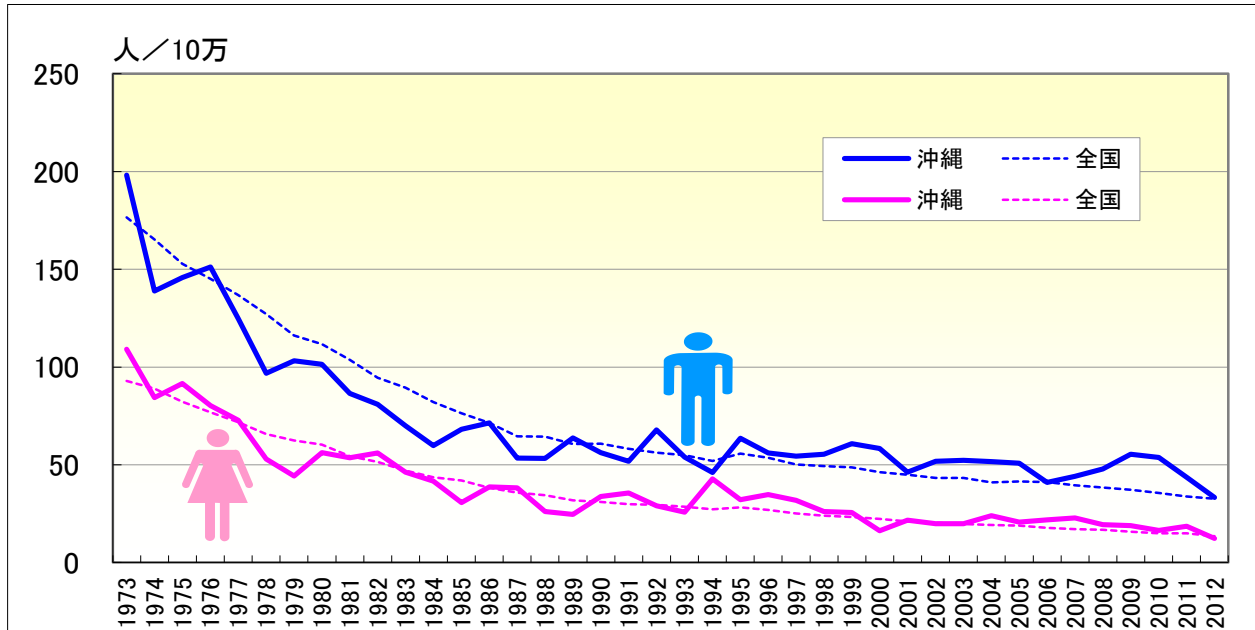
● 年齢調整死亡率（20-39歳）の年次推移（沖縄、全国：1973-2012）



	男性				女性			
	20-64年齢調整死亡率		20-39年齢調整死亡率		20-64年齢調整死亡率		20-39年齢調整死亡率	
	沖縄	全国	沖縄	全国	沖縄	全国	沖縄	全国
1973	106.31	95.16	10.50	10.21	58.22	49.43	5.19	4.01
1974	76.57	89.24	11.47	9.84	44.61	47.33	3.14	3.93
1975	78.22	82.24	7.63	8.53	50.21	43.91	7.04	3.92
1976	82.69	78.05	11.27	8.12	42.60	41.01	3.34	3.66
1977	67.76	73.80	8.32	8.13	39.86	38.38	5.56	3.52
1978	53.29	68.54	7.90	7.48	28.35	35.26	2.74	3.50
1979	57.06	62.58	8.84	6.70	23.51	33.56	1.84	3.45
1980	55.78	60.52	8.08	7.00	31.29	32.37	5.32	3.26
1981	45.75	56.14	3.14	6.54	28.79	29.41	2.83	3.29
1982	45.97	51.27	9.50	6.10	29.77	27.79	2.36	3.14
1983	38.50	48.61	5.64	5.95	25.58	25.74	4.06	3.40
1984	33.77	44.55	6.63	5.34	22.53	23.79	2.48	3.10
1985	36.76	41.40	3.92	4.86	16.50	22.69	1.74	2.60
1986	37.48	38.79	1.95	4.62	21.14	20.91	2.77	2.78
1987	29.60	35.03	4.70	4.22	20.86	19.51	2.75	2.48
1988	29.97	35.25	5.67	4.81	15.22	18.77	3.80	2.43
1989	34.75	32.81	4.49	3.67	13.35	17.30	1.60	2.15
1990	31.02	33.15	4.66	4.34	18.32	16.75	2.22	1.91
1991	29.51	31.64	6.15	3.86	20.07	16.29	3.92	2.02
1992	36.46	30.55	3.74	3.79	16.45	15.99	3.27	1.83
1993	28.88	29.80	2.79	3.50	14.74	15.59	3.24	2.01
1994	26.52	28.36	6.06	3.67	23.46	14.83	3.35	1.94
1995	36.08	30.36	7.34	3.82	17.54	15.43	2.24	2.12
1996	30.81	29.35	4.46	4.01	18.86	14.74	2.29	1.99
1997	30.86	27.49	6.20	3.81	17.10	13.85	1.70	2.04
1998	31.06	27.18	5.66	4.03	14.98	13.10	3.31	1.81
1999	32.41	26.75	2.83	3.92	14.15	12.75	2.18	1.77
2000	31.18	25.31	2.88	3.40	9.66	12.27	2.78	1.74
2001	26.67	24.73	6.32	3.64	12.99	11.55	3.93	1.73
2002	31.76	23.84	10.74	3.52	11.49	11.26	2.74	1.70
2003	29.34	23.87	5.45	3.58	11.99	10.86	3.71	1.60
2004	29.14	22.56	5.65	3.26	13.34	10.61	2.27	1.61
2005	28.32	22.92	4.82	3.56	10.86	10.46	0.56	1.62
2006	23.39	22.55	4.96	3.08	11.70	9.72	1.09	1.41
2007	25.67	21.84	6.46	3.42	13.50	9.52	3.70	1.63
2008	27.35	21.12	5.86	3.14	11.24	9.34	2.67	1.61
2009	29.62	20.55	2.67	3.05	10.68	8.79	2.13	1.44
2010	29.40	19.68	3.96	3.09	8.94	8.40	1.02	1.47
2011	23.96	18.56	3.47	2.71	10.50	8.38	2.03	1.46
2012	19.15	17.93	4.31	2.61	7.01	7.61	1.48	1.43

脳血管疾患

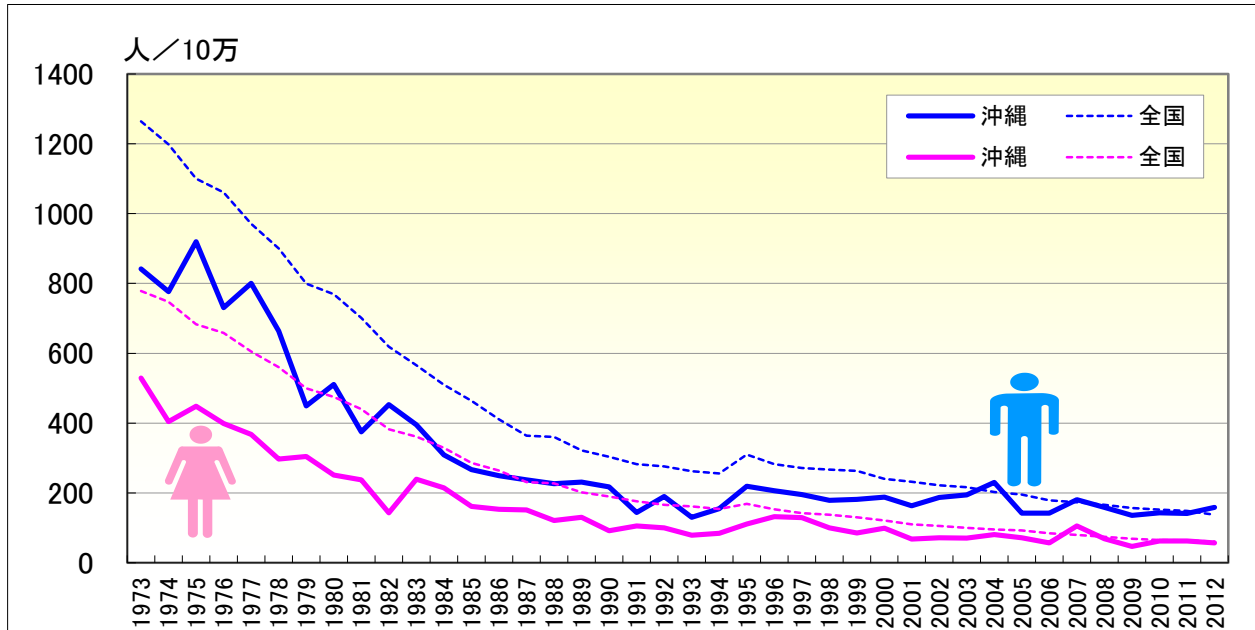
● 年齢調整死亡率（40-64歳）の年次推移（沖縄、全国：1973-2012）



	男性				女性			
	20-64年齢調整死亡率		40-64年齢調整死亡率		20-64年齢調整死亡率		40-64年齢調整死亡率	
	沖縄	全国	沖縄	全国	沖縄	全国	沖縄	全国
1973	106.31	95.16	198.08	176.54	58.22	49.43	109.03	92.95
1974	76.57	89.24	138.93	165.30	44.61	47.33	84.34	88.90
1975	78.22	82.24	145.84	152.86	50.21	43.91	91.56	82.22
1976	82.69	78.05	151.10	145.04	42.60	41.01	80.21	76.79
1977	67.76	73.80	124.71	136.70	39.86	38.38	72.72	71.77
1978	53.29	68.54	96.77	127.04	28.35	35.26	52.88	65.68
1979	57.06	62.58	103.25	116.10	23.51	33.56	44.28	62.40
1980	55.78	60.52	101.47	111.80	31.29	32.37	56.17	60.26
1981	45.75	56.14	86.57	103.67	28.79	29.41	53.64	54.43
1982	45.97	51.27	80.90	94.55	29.77	27.79	56.02	51.41
1983	38.50	48.61	69.99	89.47	25.58	25.74	46.19	47.14
1984	33.77	44.55	59.78	82.12	22.53	23.79	41.73	43.60
1985	36.76	41.40	68.23	76.40	16.50	22.69	30.64	41.93
1986	37.48	38.79	71.51	71.53	21.14	20.91	38.74	38.28
1987	29.60	35.03	53.46	64.56	20.86	19.51	38.20	35.83
1988	29.97	35.25	53.24	64.41	15.22	18.77	26.16	34.41
1989	34.75	32.81	63.73	60.72	13.35	17.30	24.62	31.81
1990	31.02	33.15	56.28	60.75	18.32	16.75	33.75	30.97
1991	29.51	31.64	51.89	58.25	20.07	16.29	35.54	29.95
1992	36.46	30.55	67.81	56.18	16.45	15.99	29.09	29.55
1993	28.88	29.80	53.87	54.98	14.74	15.59	25.75	28.60
1994	26.52	28.36	46.11	52.02	23.46	14.83	42.73	27.17
1995	36.08	30.36	63.60	55.78	17.54	15.43	32.19	28.17
1996	30.81	29.35	56.04	53.63	18.86	14.74	34.73	26.96
1997	30.86	27.49	54.49	50.18	17.10	13.85	31.84	25.16
1998	31.06	27.18	55.38	49.36	14.98	13.10	26.16	23.92
1999	32.41	26.75	60.75	48.63	14.15	12.75	25.63	23.27
2000	31.18	25.31	58.30	46.30	9.66	12.27	16.25	22.36
2001	26.67	24.73	46.17	44.94	12.99	11.55	21.67	20.95
2002	31.76	23.84	51.89	43.31	11.49	11.26	19.88	20.41
2003	29.34	23.87	52.22	43.32	11.99	10.86	19.93	19.74
2004	29.14	22.56	51.64	41.04	13.34	10.61	23.95	19.24
2005	28.32	22.92	50.83	41.46	10.86	10.46	20.74	18.92
2006	23.39	22.55	41.04	41.19	11.70	9.72	21.88	17.68
2007	25.67	21.84	44.06	39.50	13.50	9.52	22.88	17.08
2008	27.35	21.12	47.95	38.33	11.24	9.34	19.46	16.74
2009	29.62	20.55	55.44	37.30	10.68	8.79	18.87	15.83
2010	29.40	19.68	53.77	35.58	8.94	8.40	16.52	15.05
2011	23.96	18.56	43.59	33.74	10.50	8.38	18.61	15.00
2012	19.15	17.93	33.37	32.60	7.01	7.61	12.32	13.53

脳血管疾患

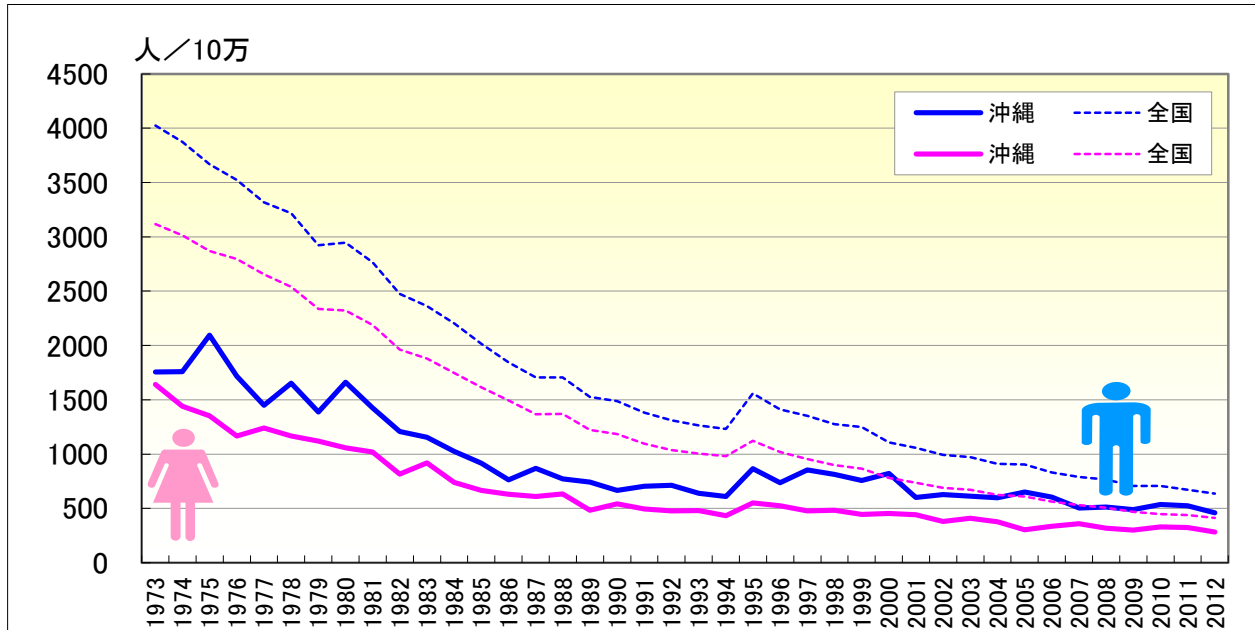
● 年齢調整死亡率（65-74歳）の年次推移（沖縄、全国：1973-2012）



	男性				女性			
	65-年齢調整死亡率		65-74年齢調整死亡率		65-年齢調整死亡率		65-74年齢調整死亡率	
	沖縄	全国	沖縄	全国	沖縄	全国	沖縄	全国
1973	1177.48	2277.23	841.99	1264.73	936.93	1637.14	529.51	778.46
1974	1137.15	2180.91	777.06	1198.24	784.28	1578.84	404.40	747.18
1975	1351.37	2042.26	919.73	1100.26	780.87	1485.51	448.84	682.98
1976	1092.97	1965.05	730.36	1061.04	680.45	1443.11	399.06	658.25
1977	1037.99	1832.42	800.28	971.28	687.98	1357.16	367.44	605.23
1978	1027.05	1751.10	663.82	900.84	616.21	1286.69	297.35	560.04
1979	794.06	1578.76	449.49	799.86	603.41	1173.51	304.37	499.53
1980	933.28	1568.52	510.85	769.20	547.47	1152.22	251.39	474.90
1981	761.06	1458.77	375.46	701.07	524.06	1081.59	237.31	439.72
1982	730.34	1300.23	453.35	618.89	390.45	962.36	142.95	382.81
1983	673.38	1225.34	395.02	565.58	488.74	918.80	239.43	361.70
1984	571.60	1130.89	309.14	509.67	406.87	849.86	215.00	328.83
1985	505.30	1032.86	266.81	463.96	346.32	774.30	161.66	286.46
1986	437.54	937.44	249.35	410.84	328.53	714.99	153.21	264.17
1987	469.16	856.99	237.62	364.17	319.58	647.87	151.18	231.33
1988	426.07	854.24	226.52	360.25	308.39	647.14	120.79	227.63
1989	418.81	764.04	231.00	322.22	259.94	576.20	129.90	201.45
1990	381.28	738.05	217.06	303.98	256.68	554.55	91.97	189.65
1991	348.97	685.95	143.74	282.37	248.71	513.51	105.51	175.74
1992	381.30	655.98	189.83	276.15	238.11	486.02	100.03	166.39
1993	316.92	630.40	130.16	262.40	226.54	470.56	79.04	161.47
1994	321.91	614.16	154.69	255.93	211.81	456.78	84.46	153.69
1995	456.52	767.68	219.20	309.86	272.61	518.89	111.24	169.19
1996	400.95	696.72	206.72	282.93	275.55	470.67	132.23	153.33
1997	437.34	668.06	195.40	271.34	256.72	440.35	129.55	142.56
1998	411.51	637.19	178.57	266.48	241.19	416.86	100.28	137.63
1999	392.35	625.72	181.69	263.47	216.89	399.91	84.96	129.86
2000	420.79	558.13	187.77	239.96	229.07	363.09	99.42	121.42
2001	323.59	534.35	163.15	231.85	204.75	339.64	68.00	110.18
2002	348.75	505.14	186.80	222.39	184.75	320.35	71.20	105.71
2003	347.90	493.34	194.50	216.49	195.52	309.66	70.77	100.07
2004	364.67	462.27	230.17	202.40	188.85	290.07	80.48	95.72
2005	328.48	455.46	142.04	194.97	156.18	282.02	71.42	92.80
2006	311.42	417.47	141.94	178.69	158.90	260.35	56.59	84.80
2007	299.34	399.54	181.04	173.27	199.07	244.99	105.84	79.48
2008	288.42	386.20	158.95	165.88	160.01	232.86	69.09	74.81
2009	265.73	359.33	135.62	157.17	140.13	214.92	46.60	68.69
2010	287.18	355.48	143.26	152.01	160.68	206.10	62.30	65.40
2011	281.37	341.01	141.15	148.89	158.51	201.01	62.08	63.89
2012	268.68	321.20	158.69	137.77	139.23	189.57	57.00	60.23

脳血管疾患

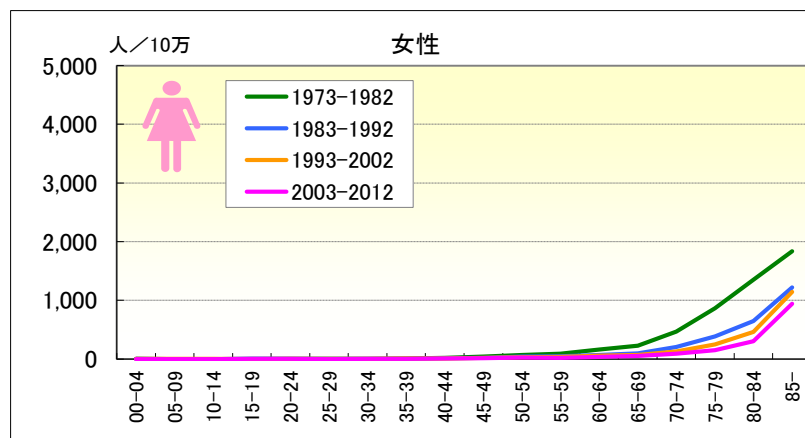
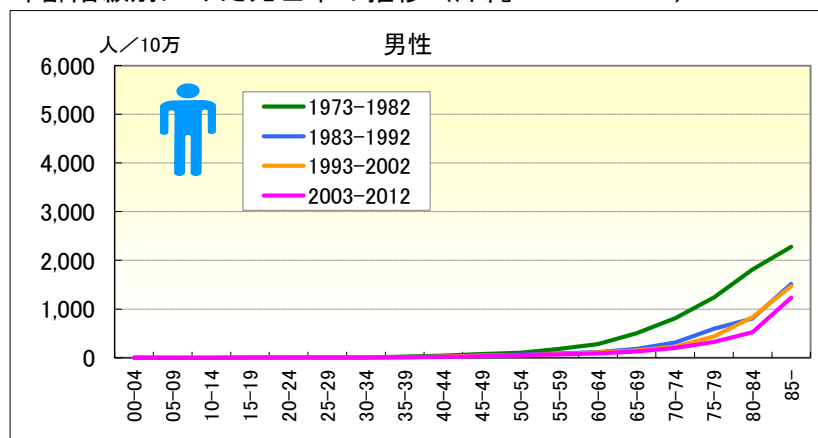
● 年齢調整死亡率（75歳以上）の年次推移（沖縄、全国：1973-2012）



	男性				女性			
	65-年齢調整死亡率		75-年齢調整死亡率		65-年齢調整死亡率		75-年齢調整死亡率	
	沖縄	全国	沖縄	全国	沖縄	全国	沖縄	全国
1973	1177.48	2277.23	1756.10	4023.48	936.93	1637.14	1639.60	3118.10
1974	1137.15	2180.91	1758.18	3875.71	784.28	1578.84	1439.45	3013.18
1975	1351.37	2042.26	2095.82	3666.92	780.87	1485.51	1353.52	2869.60
1976	1092.97	1965.05	1718.37	3524.17	680.45	1443.11	1165.75	2796.74
1977	1037.99	1832.42	1447.97	3317.61	687.98	1357.16	1240.81	2654.00
1978	1027.05	1751.10	1653.50	3217.55	616.21	1286.69	1166.12	2539.94
1979	794.06	1578.76	1388.34	2922.13	603.41	1173.51	1119.16	2335.91
1980	933.28	1568.52	1661.84	2947.10	547.47	1152.22	1058.12	2320.39
1981	761.06	1458.77	1426.08	2765.56	524.06	1081.59	1018.62	2188.60
1982	730.34	1300.23	1208.07	2475.32	390.45	962.36	817.31	1961.91
1983	673.38	1225.34	1153.47	2363.22	488.74	918.80	918.71	1879.61
1984	571.60	1130.89	1024.27	2202.28	406.87	849.86	737.79	1748.47
1985	505.30	1032.86	916.63	2014.01	346.32	774.30	664.81	1615.66
1986	437.54	937.44	762.12	1845.66	328.53	714.99	630.91	1492.52
1987	469.16	856.99	868.49	1706.94	319.58	647.87	610.01	1366.26
1988	426.07	854.24	770.23	1706.21	308.39	647.14	631.93	1370.68
1989	418.81	764.04	742.72	1526.03	259.94	576.20	484.23	1222.52
1990	381.28	738.05	664.50	1486.67	256.68	554.55	540.75	1183.88
1991	348.97	685.95	702.92	1382.00	248.71	513.51	495.69	1096.05
1992	381.30	655.98	711.54	1311.08	238.11	486.02	476.27	1037.30
1993	316.92	630.40	639.01	1265.07	226.54	470.56	480.93	1003.64
1994	321.91	614.16	610.30	1232.01	211.81	456.78	431.44	979.52
1995	456.52	767.68	865.82	1557.26	272.61	518.89	550.93	1122.03
1996	400.95	696.72	735.95	1410.38	275.55	470.67	522.71	1018.00
1997	437.34	668.06	854.61	1352.28	256.72	440.35	476.06	953.94
1998	411.51	637.19	813.24	1276.55	241.19	416.86	484.22	898.45
1999	392.35	625.72	755.67	1250.47	216.89	399.91	444.42	865.67
2000	420.79	558.13	822.68	1106.88	229.07	363.09	452.67	779.90
2001	323.59	534.35	600.28	1056.07	204.75	339.64	440.61	735.38
2002	348.75	505.14	628.06	992.80	184.75	320.35	380.58	690.53
2003	347.90	493.34	612.48	970.81	195.52	309.66	410.67	671.14
2004	364.67	462.27	596.64	910.47	188.85	290.07	375.76	625.25
2005	328.48	455.46	650.04	904.73	156.18	282.02	302.36	608.35
2006	311.42	417.47	603.74	829.29	158.90	260.35	335.37	563.13
2007	299.34	399.54	503.38	789.77	199.07	244.99	359.86	530.44
2008	288.42	386.20	511.71	766.19	160.01	232.86	316.82	505.44
2009	265.73	359.33	490.14	708.00	140.13	214.92	301.43	467.10
2010	287.18	355.48	535.39	706.39	160.68	206.10	330.37	448.77
2011	281.37	341.01	523.20	672.36	158.51	201.01	324.81	437.50
2012	268.68	321.20	458.38	637.56	139.23	189.57	281.07	412.66

脳血管疾患

● 年齢階級別にみた死亡率の推移（沖縄：1973-2012）

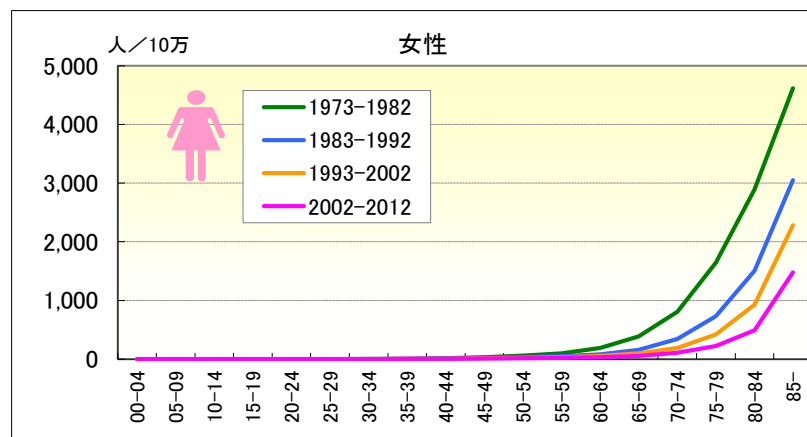
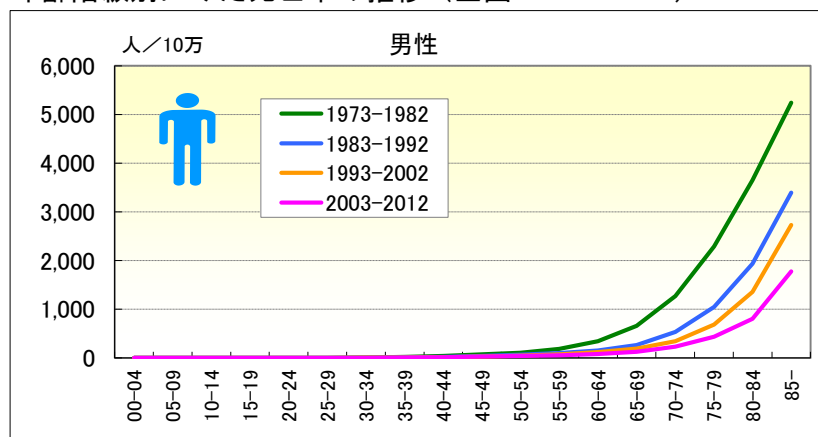


● 年齢階級別、性別*期間別死亡率（沖縄：1973-2012年）

		総数	00-04	05-09	10-14	15-19	20-24	25-29	30-34	35-39	40-44	45-49	50-54	55-59	60-64	65-69	70-74	75-79	80-84	85-
男	1973-1977	90.87	1.75	0.38	0.36	1.55	2.17	2.81	9.81	23.47	50.32	82.63	116.49	230.29	376.58	621.55	1,061.54	1,393.08	1,939.23	2,534.11
	1978-1982	71.32	0.37	0.35	0.37	0.41	2.93	2.80	4.98	18.83	33.99	66.05	88.93	135.29	191.78	400.44	600.92	1,114.55	1,705.55	2,097.65
	1973-1982	80.78	1.09	0.36	0.37	1.00	2.53	2.80	7.03	21.20	42.01	73.30	100.42	178.44	278.67	503.21	811.27	1,242.07	1,814.09	2,278.10
	1983-1987	52.42	0.39	0.00	0.35	0.00	1.01	1.65	6.89	8.49	31.51	47.74	69.30	86.03	113.24	222.23	376.43	736.34	897.51	1,635.33
	1988-1992	49.42	0.42	0.38	0.37	0.76	0.51	3.81	4.25	10.90	19.69	38.48	61.31	92.43	113.48	152.45	262.03	483.57	731.87	1,419.92
	1983-1992	50.90	0.40	0.19	0.36	0.39	0.76	2.65	5.64	9.78	24.94	43.21	65.19	89.62	113.38	184.05	315.00	598.55	804.76	1,514.00
	1993-1997	56.21	0.00	0.00	0.78	1.18	1.74	2.83	7.33	9.26	21.63	38.74	56.00	78.24	107.99	147.75	229.34	437.23	872.90	1,477.76
	1998-2002	63.85	0.47	0.44	0.41	0.41	0.91	1.26	5.85	14.32	26.95	41.34	49.31	72.71	106.48	145.78	223.84	432.76	803.05	1,458.98
	1993-2002	60.10	0.23	0.21	0.60	0.80	1.34	2.00	6.58	11.71	24.20	40.14	52.24	75.51	107.20	146.64	226.15	434.76	835.02	1,467.20
	2003-2007	65.34	0.00	0.00	0.00	1.31	0.48	2.63	4.43	13.96	18.70	28.39	59.79	68.41	86.12	141.03	224.60	353.12	585.82	1,340.50
	2008-2012	66.31	0.00	0.00	0.00	0.47	1.05	0.95	3.42	10.66	18.01	31.90	48.01	71.66	88.23	118.37	185.72	307.65	483.86	1,144.63
2003-2012	65.83	0.00	0.00	0.00	0.90	0.76	1.82	3.94	12.20	18.35	30.10	54.10	70.20	87.31	130.06	204.05	327.08	526.10	1,233.51	
女	1973-1977	93.62	1.46	0.00	0.37	1.20	2.29	2.00	2.49	12.21	24.35	56.62	82.44	121.32	206.58	297.41	597.41	1,077.12	1,598.93	1,799.59
	1978-1982	74.94	1.18	0.36	0.00	0.00	1.00	2.13	2.90	5.90	18.87	32.53	53.09	66.01	125.05	163.67	349.73	697.69	1,139.59	1,859.65
	1973-1982	84.01	1.32	0.19	0.19	0.62	1.67	2.07	2.72	9.15	21.53	43.79	66.35	91.50	162.95	226.11	465.11	866.29	1,349.17	1,834.08
	1983-1987	61.72	1.23	0.38	0.00	0.00	0.00	1.77	3.71	5.32	17.30	27.11	45.98	53.08	68.66	126.85	255.35	480.19	710.97	1,400.74
	1988-1992	53.06	0.44	0.00	0.38	1.17	0.97	0.94	4.35	5.37	11.75	15.12	31.45	44.57	64.80	71.20	158.66	303.57	591.31	1,085.86
	1983-1992	57.30	0.85	0.20	0.19	0.61	0.49	1.37	4.02	5.35	14.25	21.26	38.48	48.54	66.56	96.86	203.47	385.13	645.64	1,219.56
	1993-1997	60.53	0.48	0.00	0.41	0.41	0.00	0.46	1.82	7.80	12.99	26.28	37.24	41.16	64.94	67.75	161.04	273.22	530.36	1,110.95
	1998-2002	61.57	0.50	0.93	0.43	0.00	0.92	3.30	1.75	5.83	6.52	13.50	21.09	34.56	46.78	73.36	98.70	225.26	404.98	1,165.21
	1993-2002	61.06	0.49	0.45	0.42	0.21	0.45	1.95	1.79	6.83	9.81	19.38	28.38	37.94	55.53	70.75	127.03	247.30	462.64	1,141.30
	2003-2007	60.24	0.00	0.00	0.47	0.00	0.48	0.43	1.58	6.46	6.72	16.13	25.10	22.13	51.48	55.01	105.91	168.33	342.91	961.72
	2008-2012	59.67	0.00	0.00	0.00	0.98	1.05	0.00	2.51	3.81	7.82	16.81	21.58	17.37	27.13	43.64	79.36	137.65	270.00	921.87
2003-2012	59.95	0.00	0.00	0.24	0.47	0.75	0.22	2.03	5.05	7.28	16.46	23.37	19.52	38.02	49.58	91.97	151.84	302.66	940.13	

脳血管疾患

● 年齢階級別にみた死亡率の推移 (全国：1973-2012)

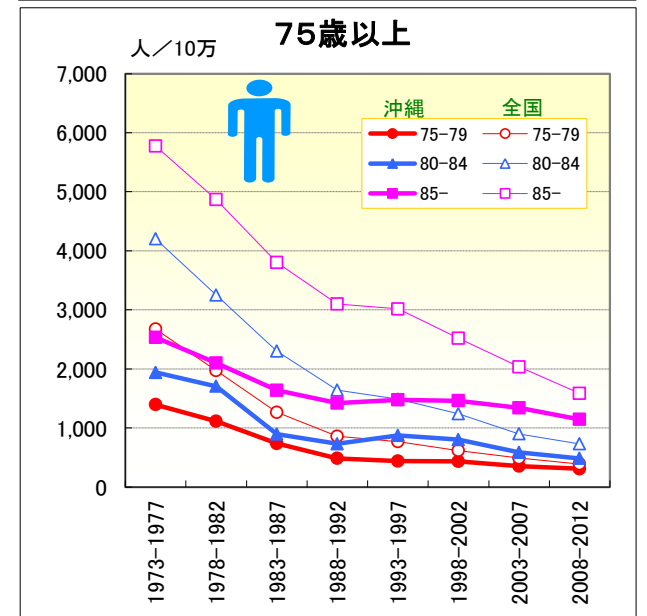
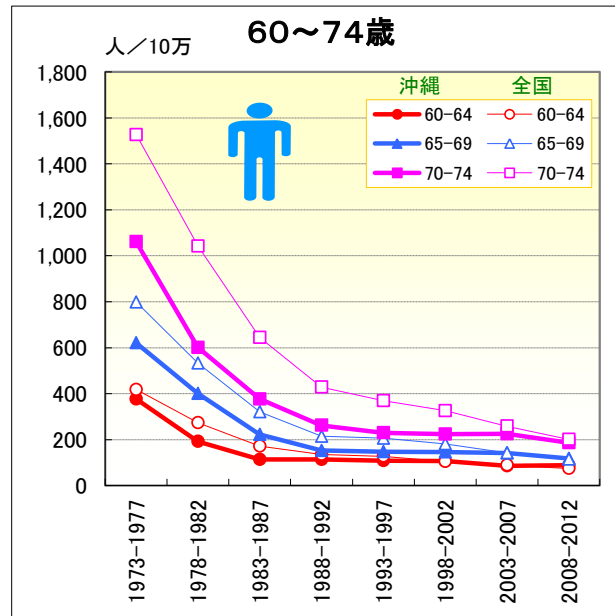
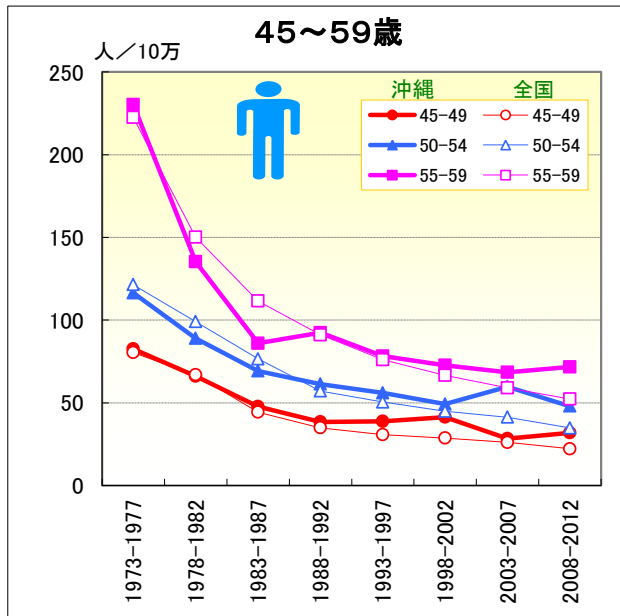
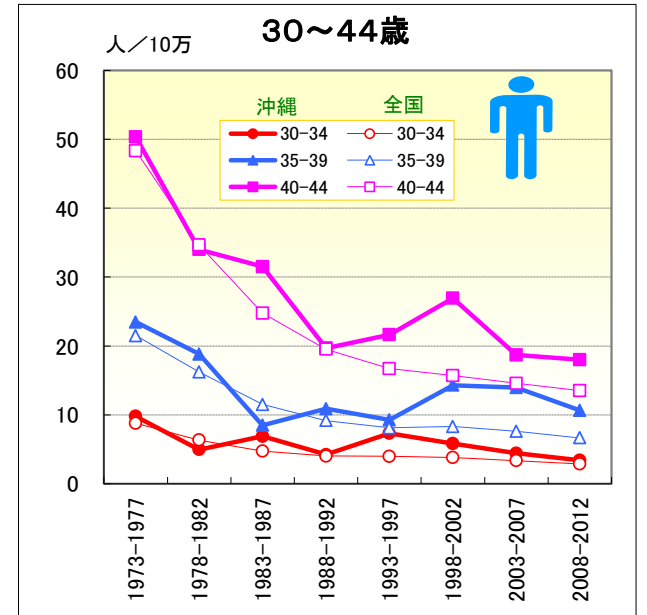
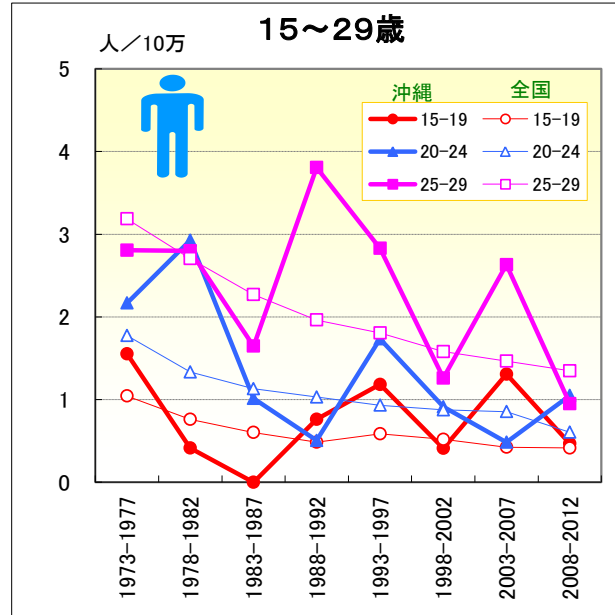
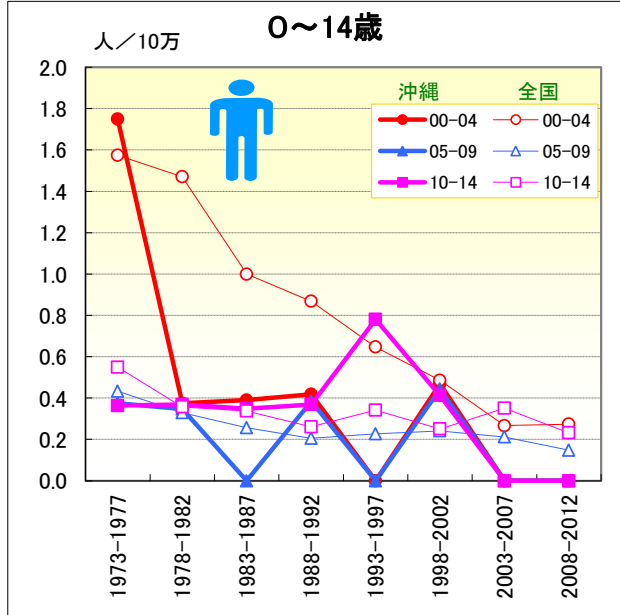


● 年齢階級別、性別*期間別死亡率 (全国：1973-2012年)

		総数	00-04	05-09	10-14	15-19	20-24	25-29	30-34	35-39	40-44	45-49	50-54	55-59	60-64	65-69	70-74	75-79	80-84	85-
男	1973-1977	166.07	1.57	0.43	0.55	1.04	1.77	3.19	8.79	21.50	48.31	80.35	121.45	222.53	417.61	798.11	1,527.03	2,672.02	4,201.78	5,772.45
	1978-1982	139.35	1.47	0.33	0.36	0.76	1.33	2.70	6.35	16.22	34.64	66.95	99.04	150.15	273.67	533.01	1,042.08	1,971.44	3,250.03	4,866.27
	1973-1982	152.39	1.53	0.38	0.45	0.90	1.57	2.96	7.48	18.77	41.38	73.28	108.66	182.51	345.15	658.60	1,266.65	2,286.64	3,653.07	5,241.48
	1983-1987	110.19	1.00	0.26	0.34	0.60	1.13	2.27	4.76	11.51	24.77	44.36	76.61	111.52	171.30	320.33	644.45	1,264.44	2,302.41	3,803.08
	1988-1992	95.02	0.87	0.21	0.26	0.48	1.03	1.96	4.03	9.18	19.53	34.91	57.12	91.09	134.69	214.61	428.23	859.63	1,638.25	3,097.81
	1983-1992	102.53	0.94	0.23	0.30	0.54	1.08	2.11	4.42	10.43	21.95	39.47	66.70	100.74	150.35	261.55	534.06	1,045.61	1,932.02	3,392.42
	1993-1997	102.57	0.65	0.23	0.34	0.59	0.93	1.80	3.99	8.12	16.72	30.70	50.45	76.09	127.41	205.91	369.04	767.07	1,486.67	3,015.49
	1998-2002	104.28	0.49	0.24	0.25	0.52	0.88	1.58	3.81	8.30	15.72	28.68	44.91	66.62	104.68	181.31	325.70	615.75	1,240.71	2,519.23
	1993-2002	103.43	0.57	0.23	0.30	0.55	0.91	1.69	3.90	8.21	16.26	29.76	47.46	71.18	115.77	192.88	344.15	681.57	1,357.32	2,730.13
	2003-2007	100.93	0.27	0.21	0.35	0.42	0.85	1.46	3.37	7.63	14.58	26.07	41.27	59.10	89.38	141.97	258.53	490.16	899.83	2,034.32
2008-2012	97.31	0.27	0.15	0.23	0.41	0.61	1.35	2.90	6.67	13.54	22.20	34.76	52.35	74.51	115.08	200.29	388.91	731.37	1,585.55	
2003-2012	99.12	0.27	0.18	0.29	0.42	0.74	1.41	3.15	7.13	14.03	24.11	38.25	55.95	81.33	127.97	228.30	435.81	802.34	1,778.83	
女	1973-1977	150.30	1.35	0.39	0.40	0.68	1.24	1.87	3.62	8.28	19.06	37.09	67.58	121.92	232.88	466.54	982.96	1,929.30	3,324.57	5,033.04
	1978-1982	133.66	0.96	0.30	0.33	0.50	0.97	1.63	3.06	7.46	15.60	31.69	51.82	82.77	154.34	315.84	665.83	1,414.51	2,575.18	4,305.02
	1973-1982	141.79	1.17	0.34	0.36	0.59	1.12	1.76	3.32	7.86	17.30	34.26	59.16	100.58	192.04	385.01	809.47	1,644.64	2,894.09	4,614.90
	1983-1987	113.92	0.78	0.24	0.31	0.57	1.04	1.69	2.72	5.90	12.91	23.82	40.73	57.13	98.07	195.21	419.46	900.86	1,822.75	3,408.86
	1988-1992	102.83	0.59	0.17	0.23	0.39	0.61	1.07	2.11	4.42	10.10	19.32	30.47	44.86	70.99	128.79	272.21	598.45	1,263.34	2,804.71
	1983-1992	108.31	0.69	0.21	0.27	0.47	0.81	1.38	2.44	5.22	11.41	21.49	35.51	50.71	83.54	158.85	342.18	734.00	1,505.40	3,051.93
	1993-1997	111.04	0.56	0.19	0.24	0.40	0.62	1.09	2.35	3.93	9.06	16.81	26.61	37.74	62.48	107.32	218.68	491.04	1,062.42	2,562.38
	1998-2002	109.38	0.29	0.21	0.29	0.37	0.62	0.94	1.92	3.46	7.52	14.15	22.55	31.54	47.90	86.53	164.81	361.66	808.00	2,082.99
	1993-2002	110.20	0.42	0.20	0.27	0.39	0.62	1.01	2.12	3.69	8.35	15.58	24.43	34.53	55.03	96.40	189.64	419.31	925.85	2,280.15
	2003-2007	104.79	0.24	0.14	0.23	0.35	0.52	0.90	1.56	3.24	6.58	12.19	19.02	27.60	37.22	63.99	124.74	260.51	577.55	1,676.11
2008-2012	98.71	0.21	0.16	0.29	0.38	0.56	0.82	1.37	3.11	5.76	10.42	16.27	21.22	30.33	48.53	89.87	189.42	421.37	1,328.86	
2002-2012	101.74	0.22	0.15	0.26	0.36	0.54	0.86	1.47	3.17	6.15	11.30	17.75	24.60	33.54	56.00	106.78	222.87	492.01	1,478.95	

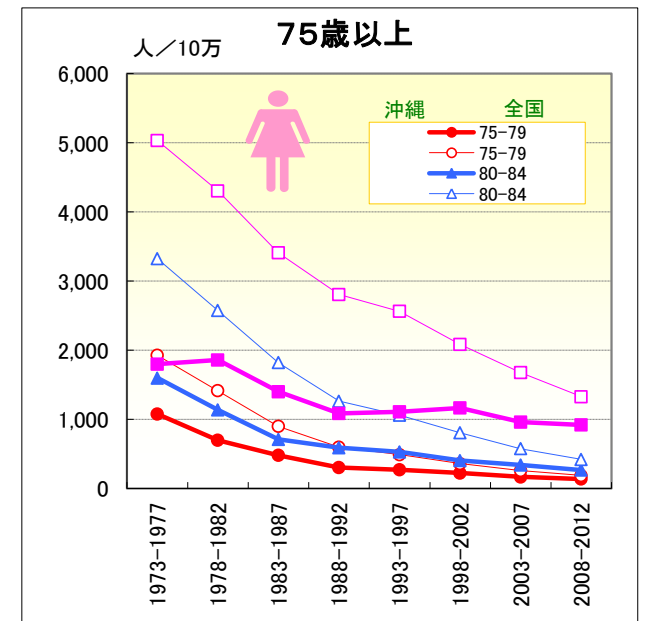
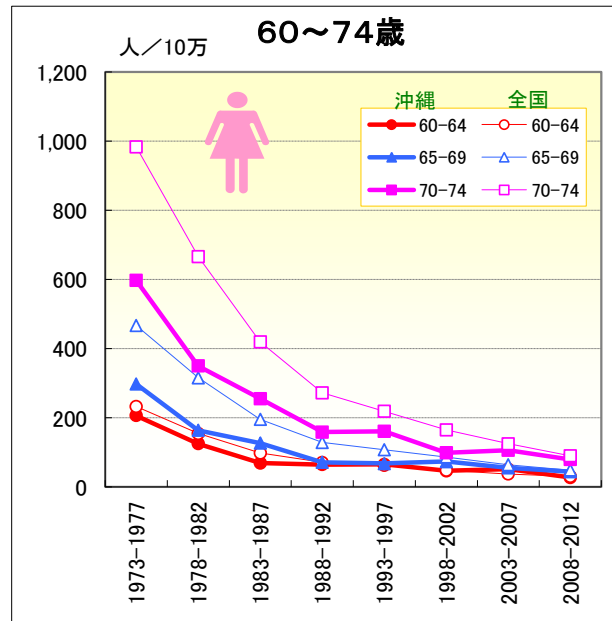
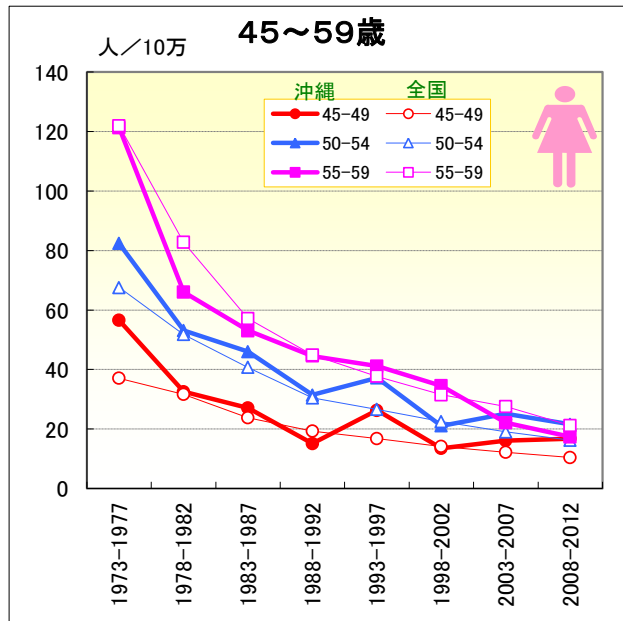
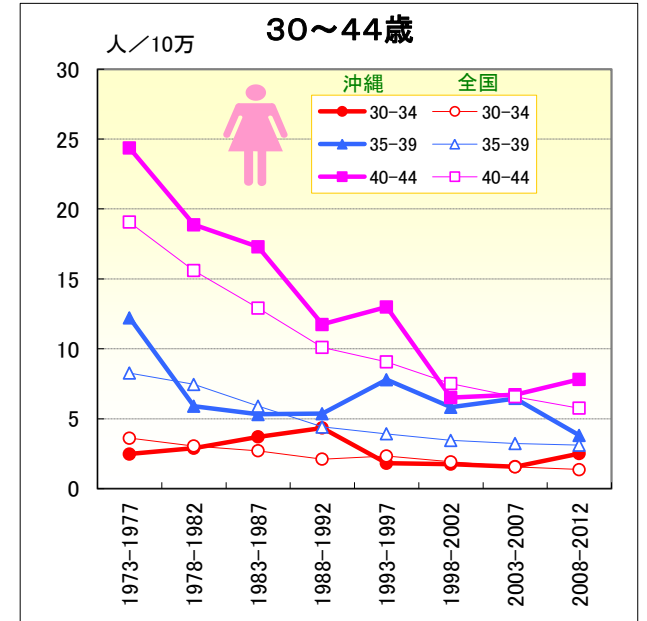
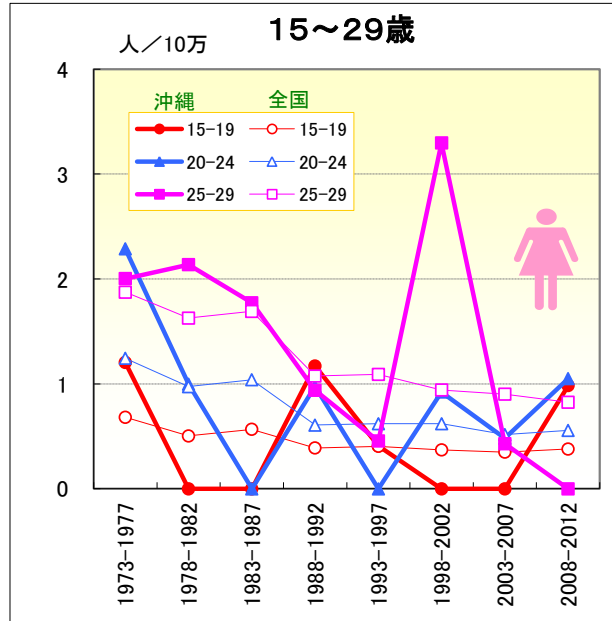
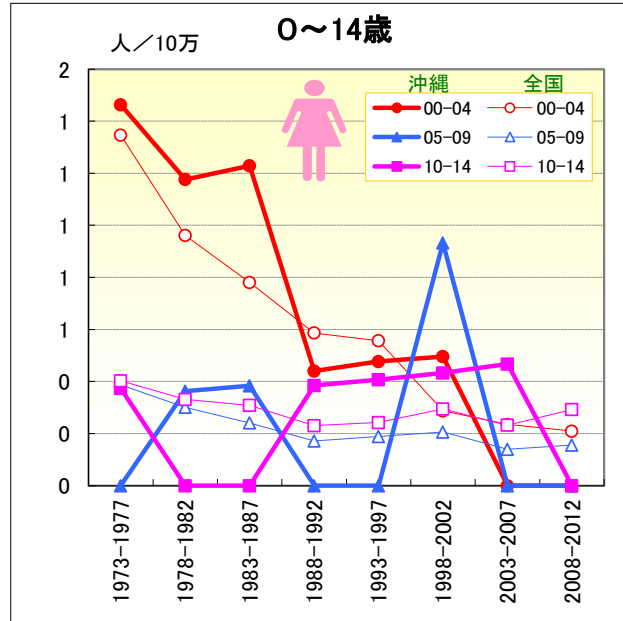
脳血管疾患

● 年齢階級別にみた死亡率の推移 (沖縄・全国：男1973-2012)



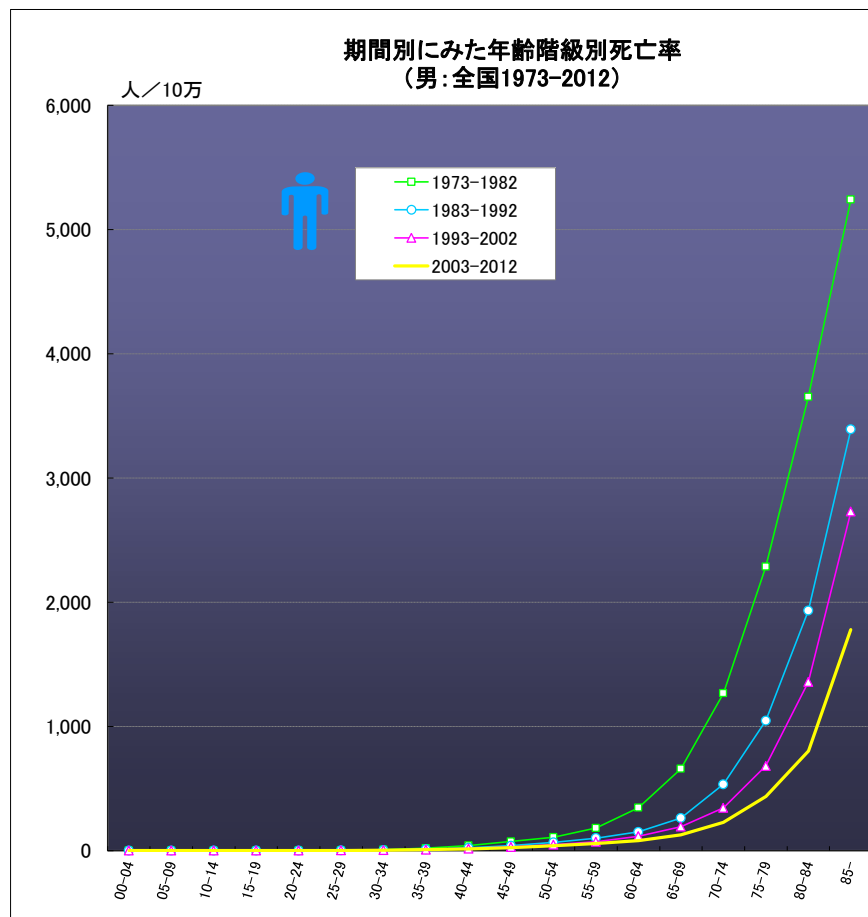
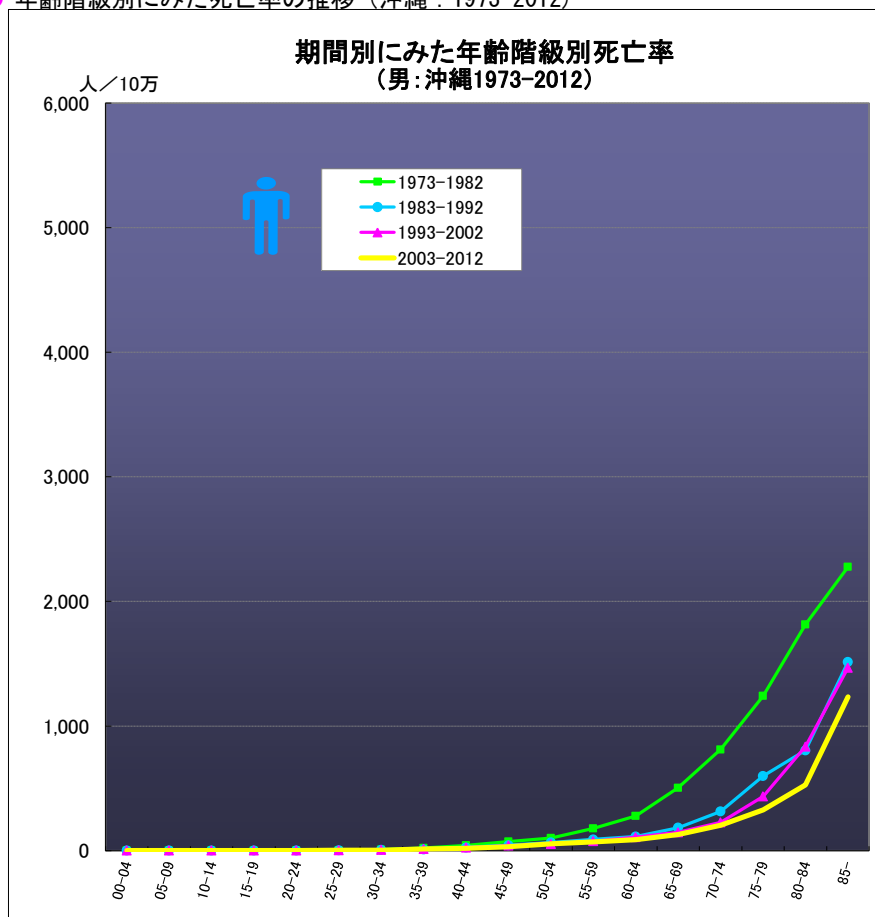
脳血管疾患

● 年齢階級別にみた死亡率の推移 (沖縄・全国：女1973-2012)



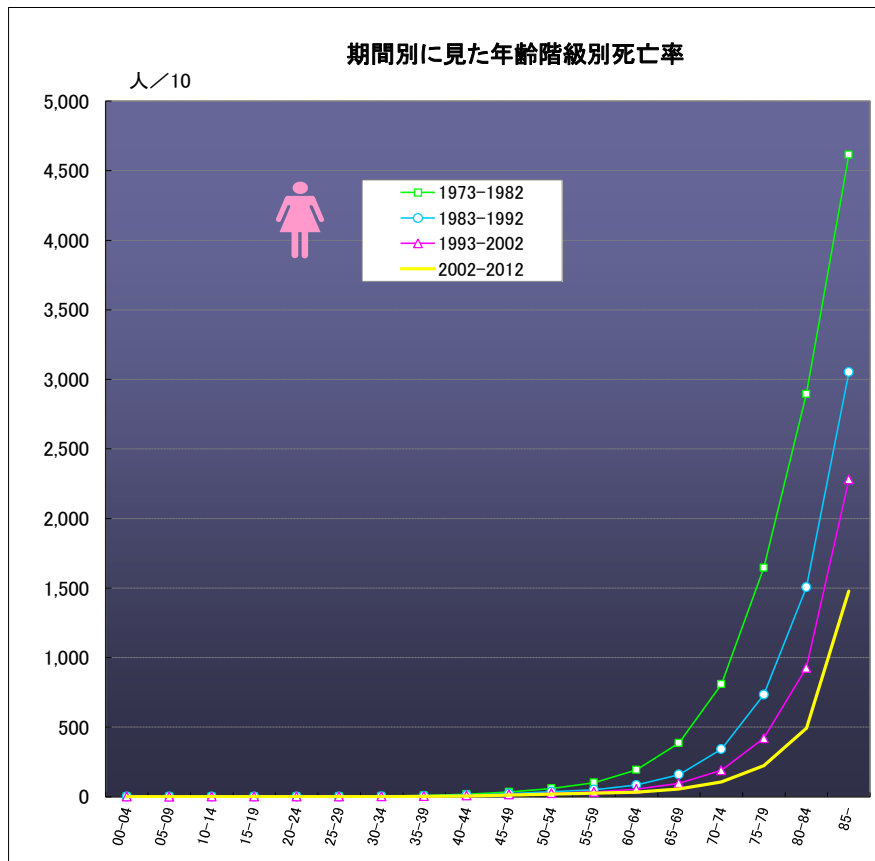
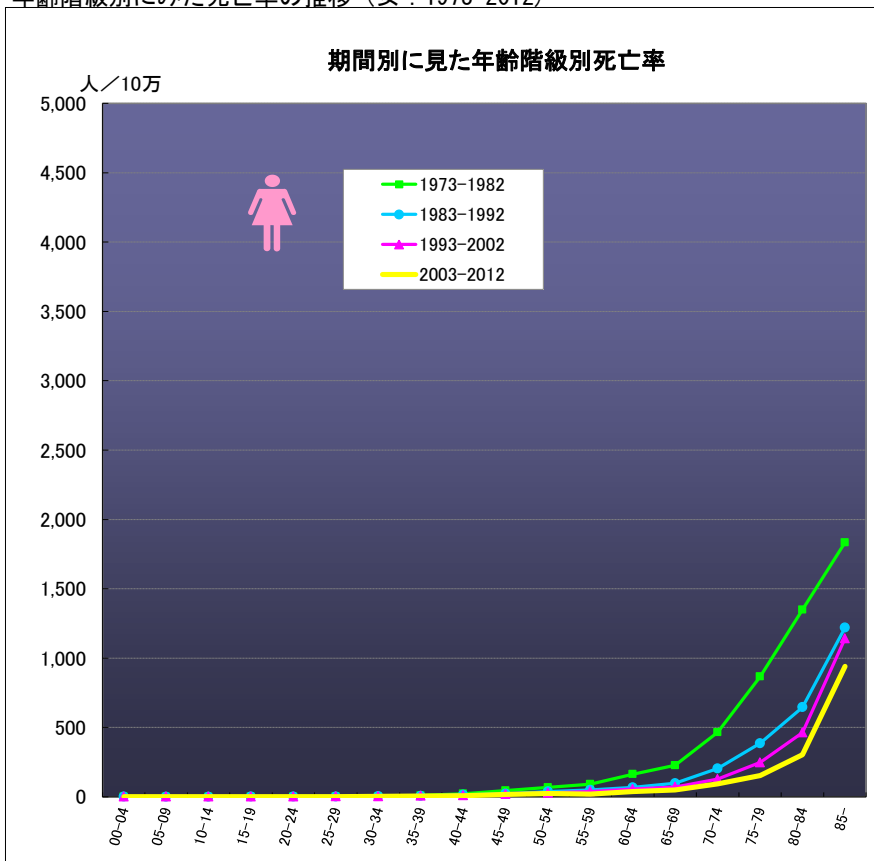
脳血管疾患

● 年齢階級別にみた死亡率の推移（沖縄：1973-2012）



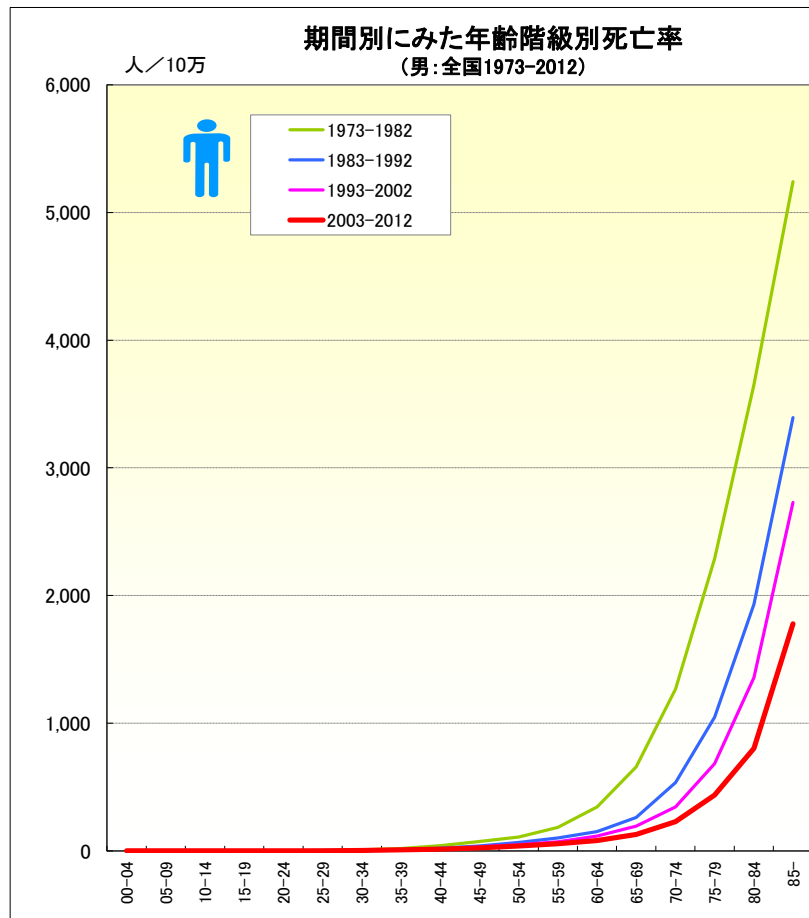
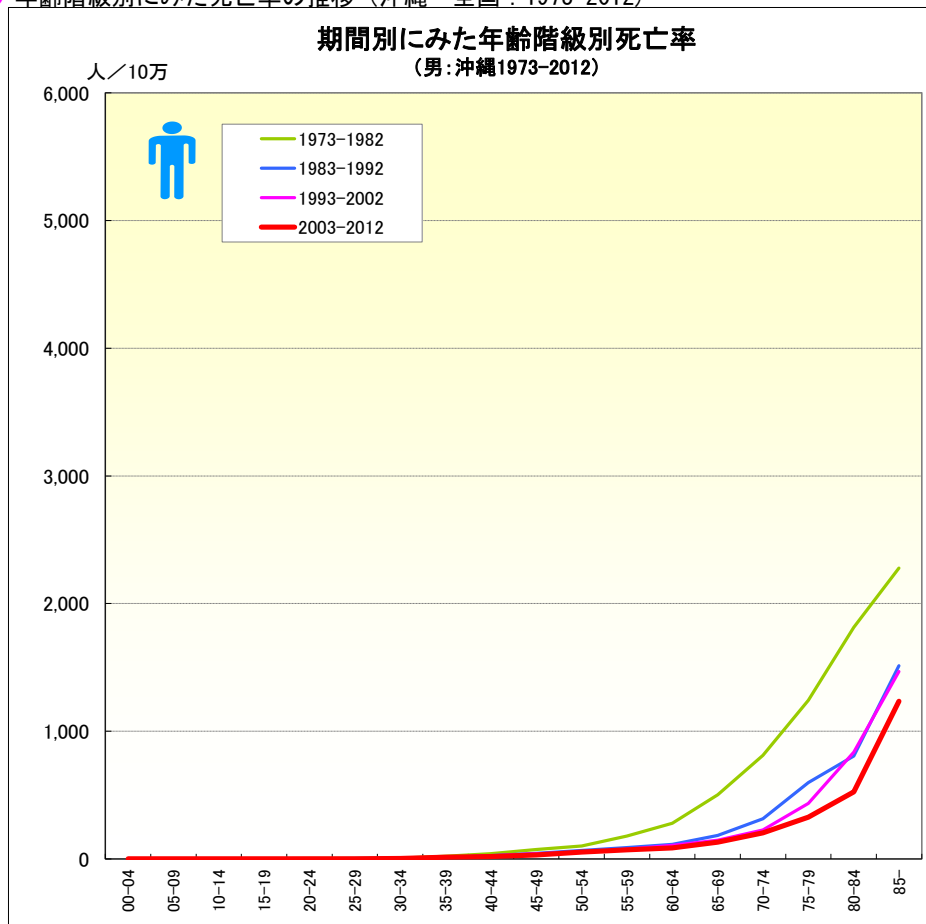
脳血管疾患

● 年齢階級別にみた死亡率の推移（女：1973-2012）



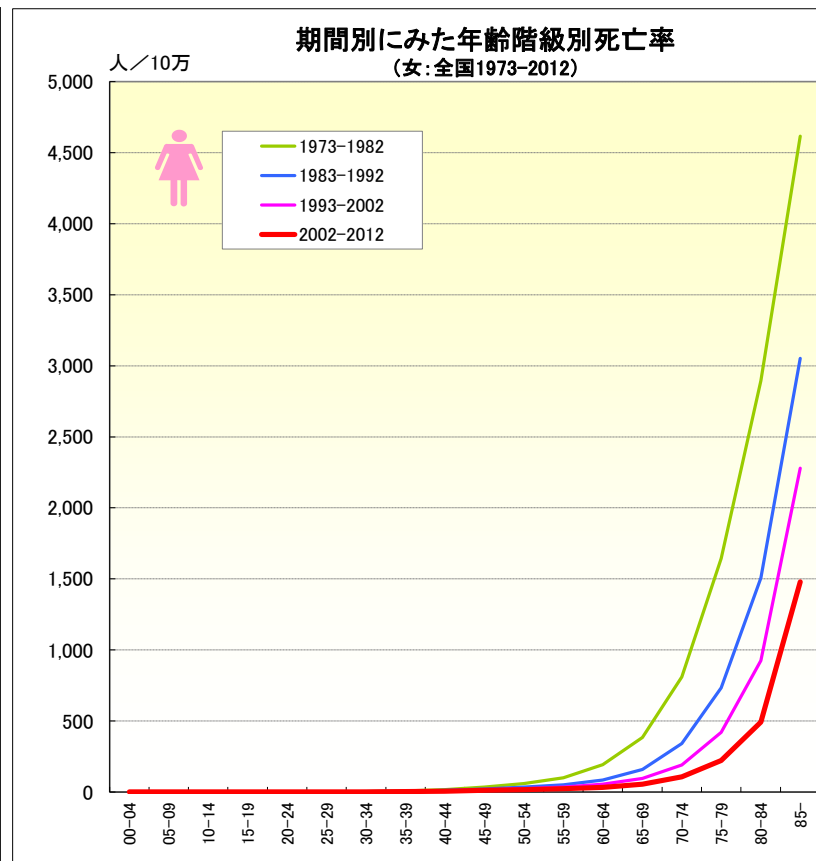
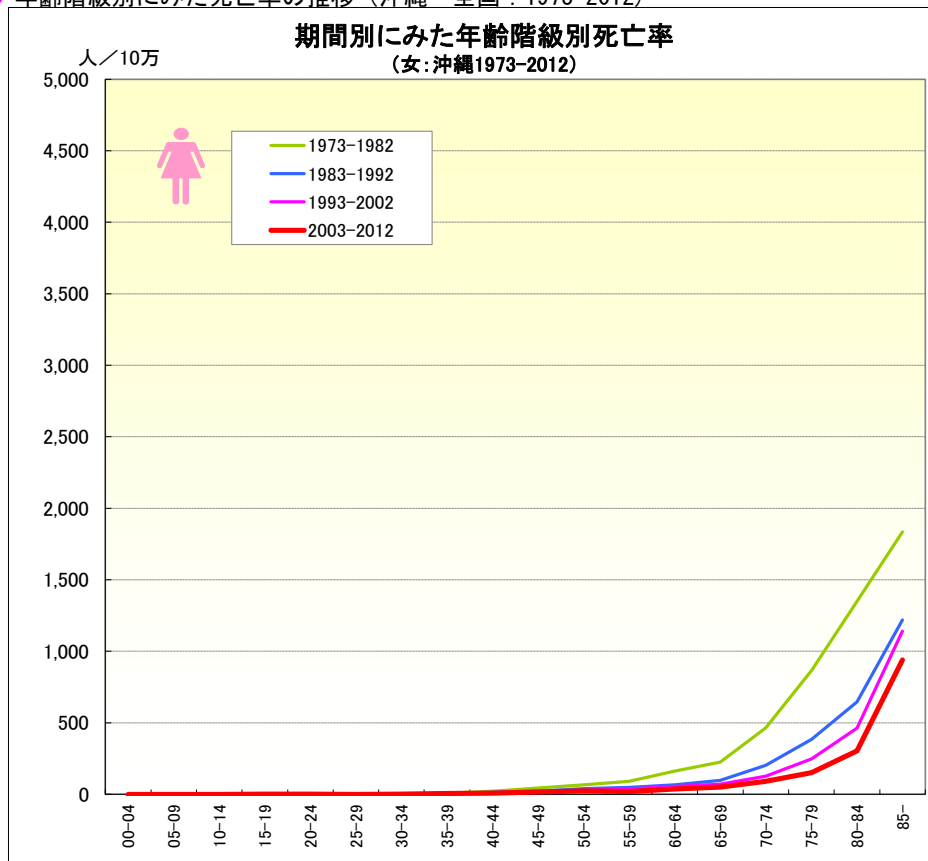
脳血管疾患

● 年齢階級別にみた死亡率の推移（沖縄・全国：1973-2012）



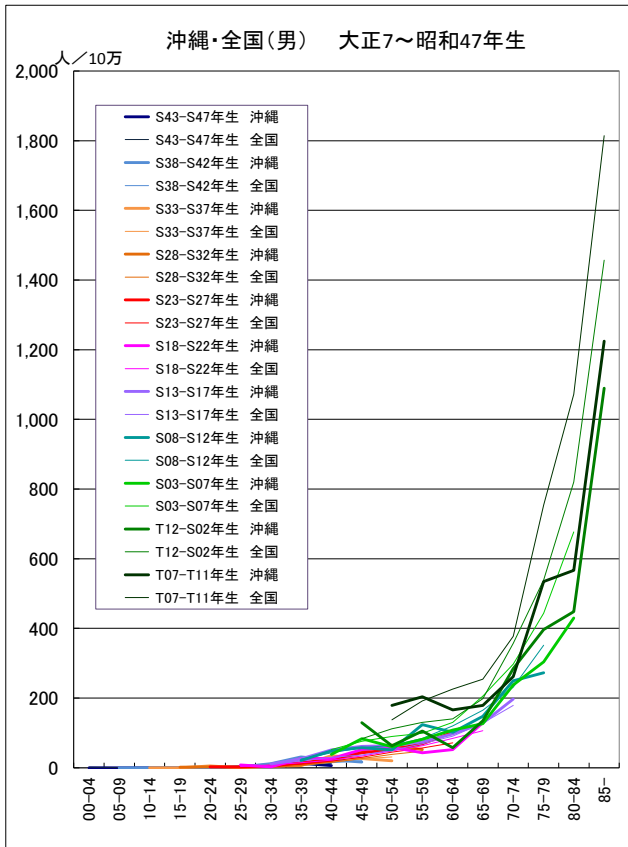
脳血管疾患

● 年齢階級別にみた死亡率の推移（沖縄・全国：1973-2012）

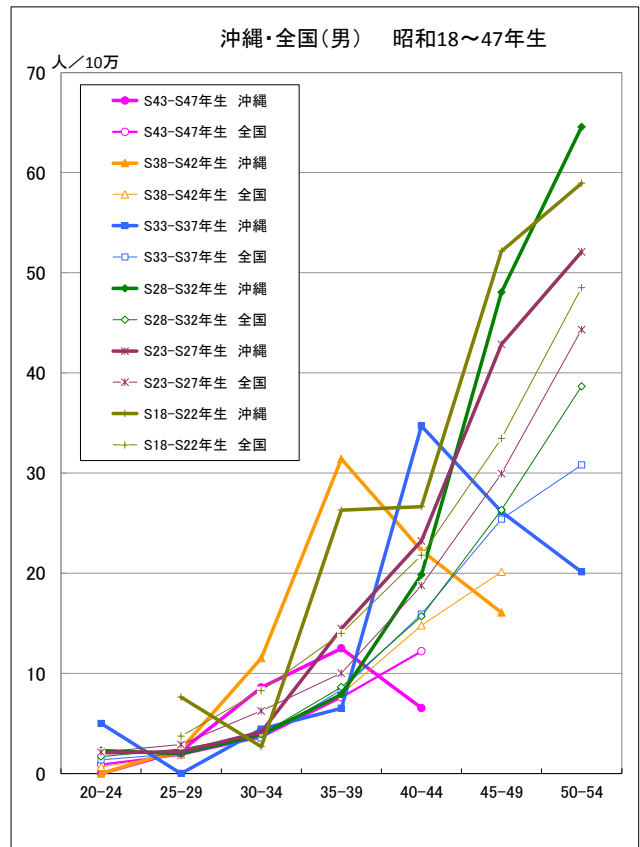


出生コホート別死亡率の推移 (男) -1973-2012-

● 脳血管疾患

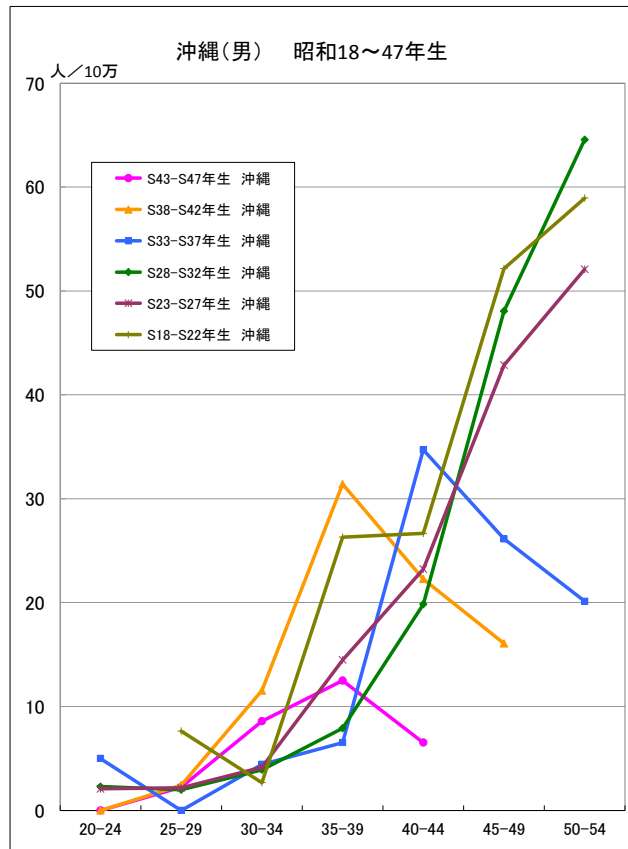


● 脳血管疾患

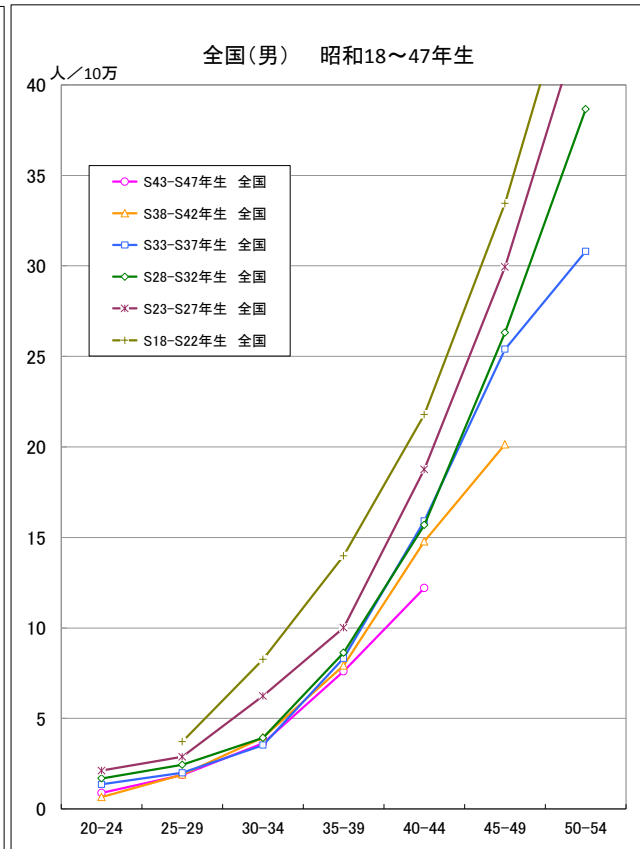


出生コホート別死亡率の推移 (男) -1973-2012-

● 脳血管疾患

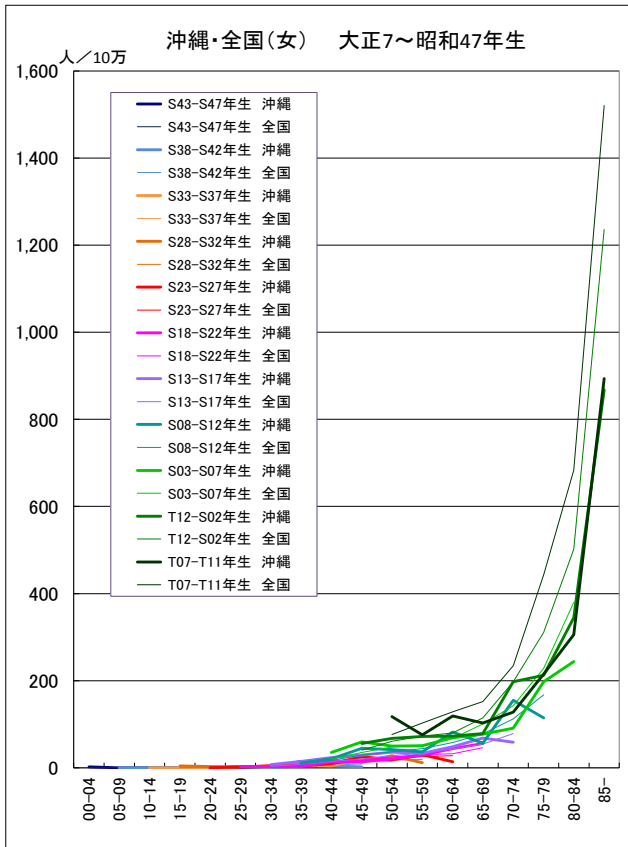


● 脳血管疾患

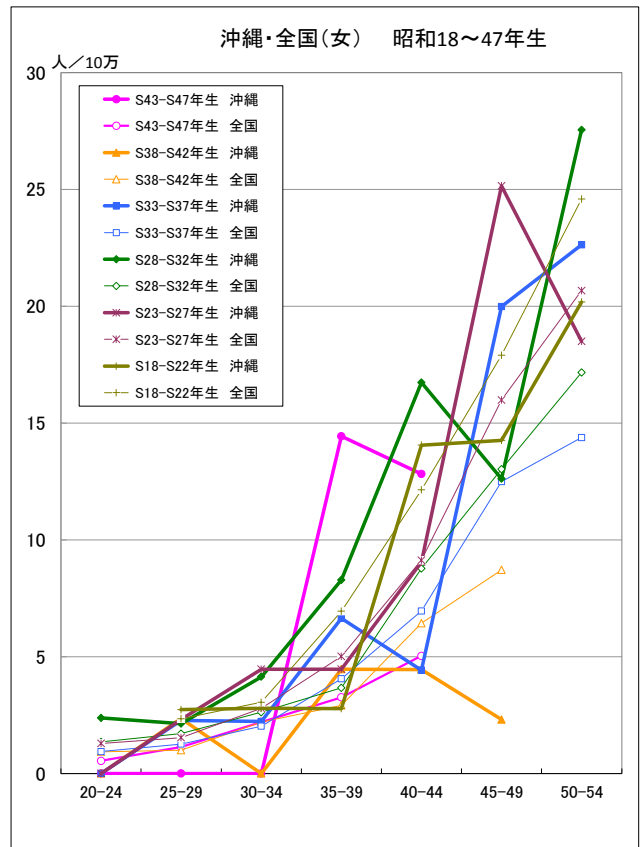


出生コホート別死亡率の推移 (女) -1973-2012-

● 脳血管疾患

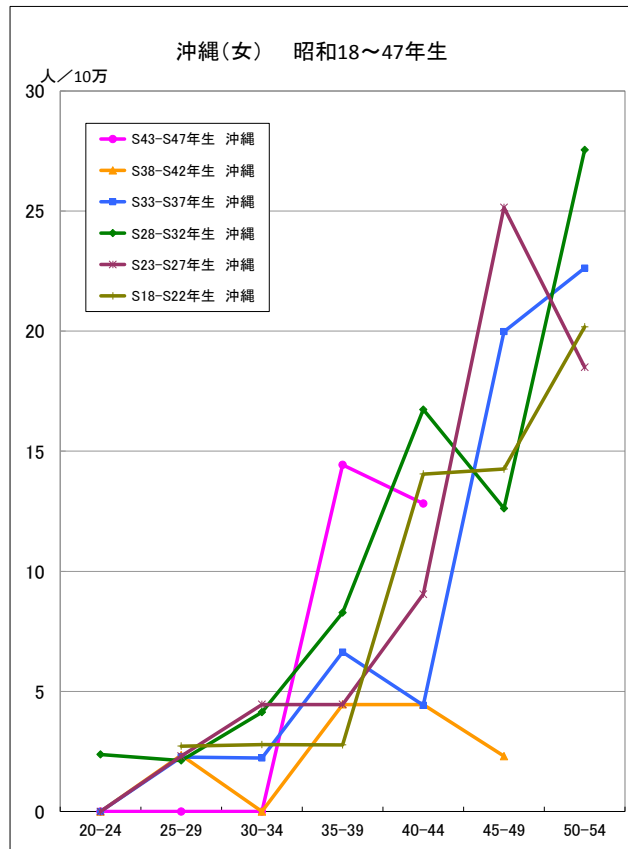


● 脳血管疾患

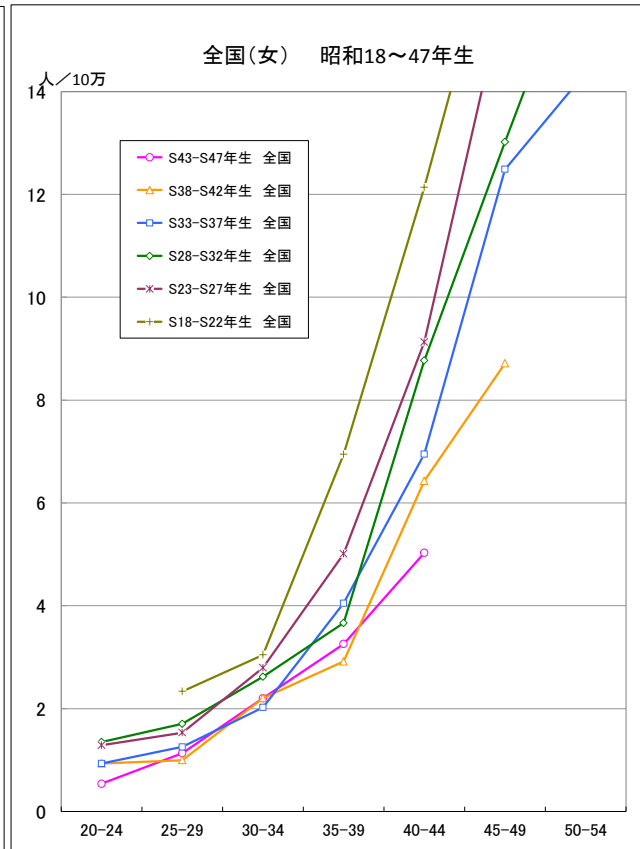


出生コホート別死亡率の推移 (女) -1973-2012-

● 脳血管疾患

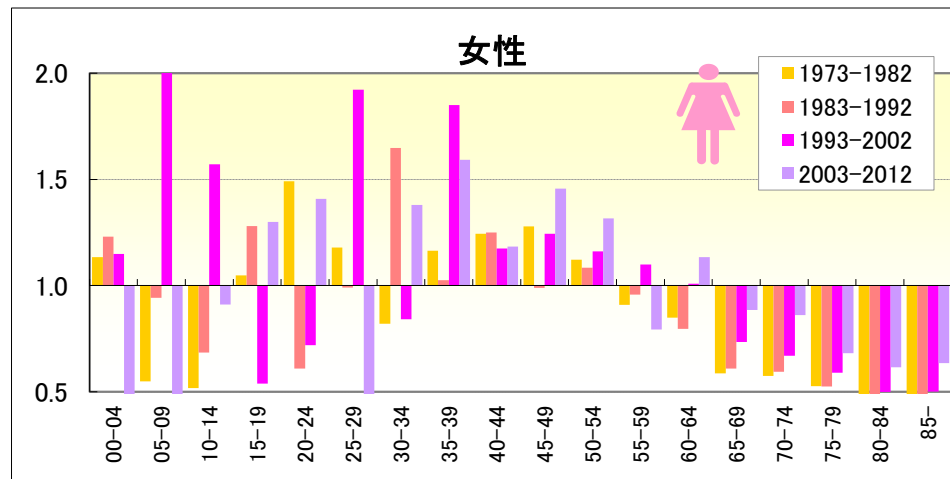
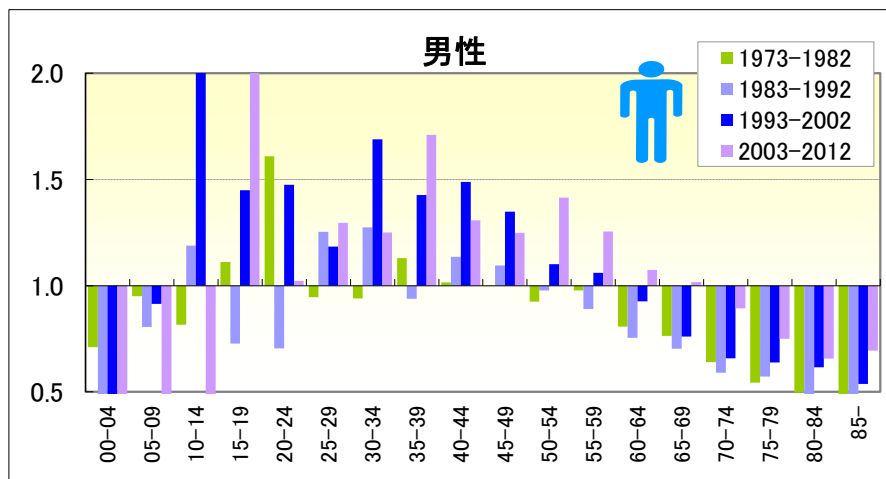


● 脳血管疾患



脳血管疾患

● 期間（10年）別にみた年齢階級別死亡率比の推移（沖縄／全国：1973-2012）

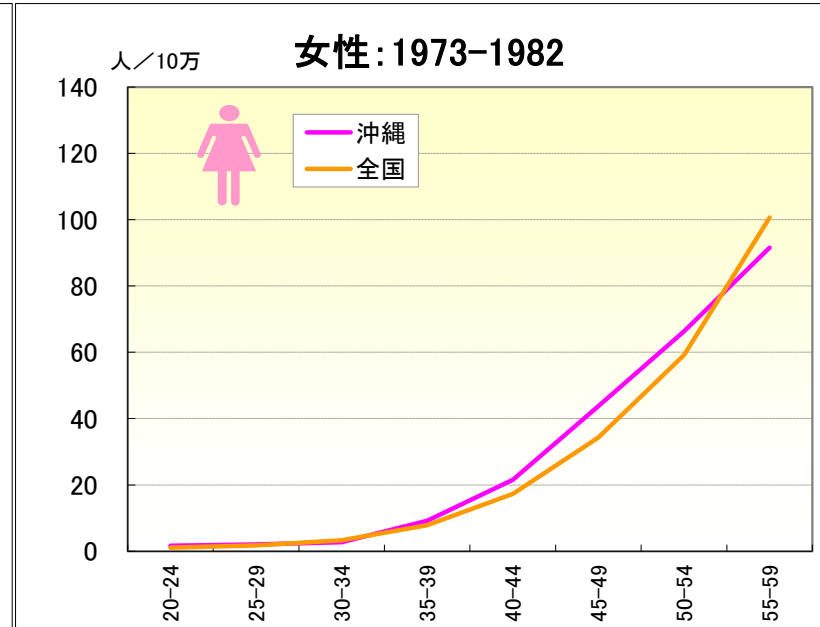
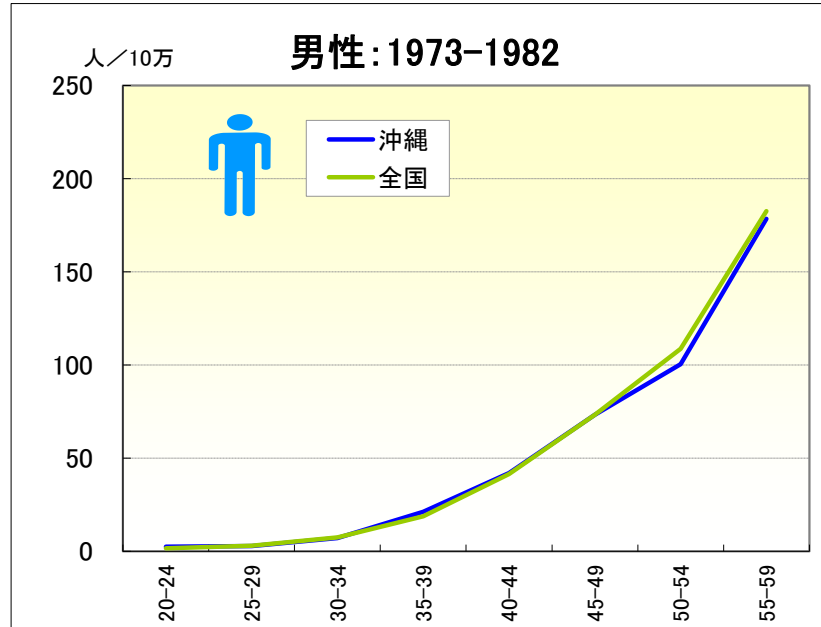


● 年齢階級別、性別*期間別死亡率比（沖縄：1973-2012年）

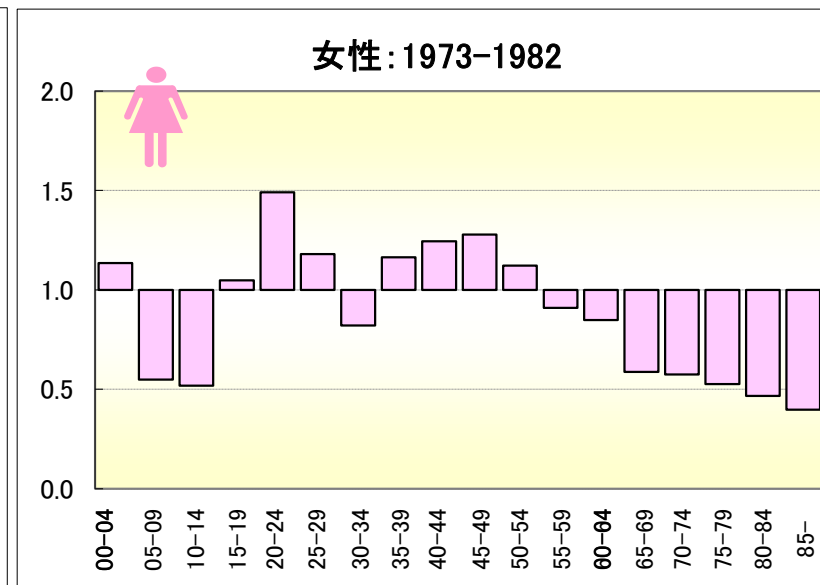
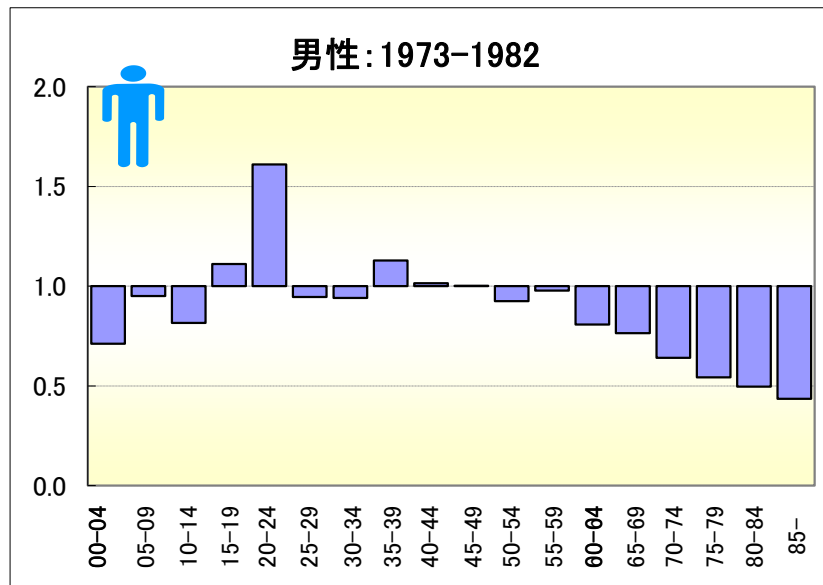
		総数	00-04	05-09	10-14	15-19	20-24	25-29	30-34	35-39	40-44	45-49	50-54	55-59	60-64	65-69	70-74	75-79	80-84	85-
男	1973-1977	0.55	1.11	0.87	0.66	1.49	1.22	0.88	1.12	1.09	1.04	1.03	0.96	1.03	0.90	0.78	0.70	0.52	0.46	0.44
	1978-1982	0.51	0.25	1.05	1.03	0.54	2.20	1.04	0.78	1.16	0.98	0.99	0.90	0.90	0.70	0.75	0.58	0.57	0.52	0.43
	1973-1982	0.53	0.71	0.95	0.82	1.11	1.61	0.95	0.94	1.13	1.02	1.00	0.92	0.98	0.81	0.76	0.64	0.54	0.50	0.43
	1983-1987	0.48	0.39	0.00	1.03	0.00	0.90	0.73	1.45	0.74	1.27	1.08	0.90	0.77	0.66	0.69	0.58	0.58	0.39	0.43
	1988-1992	0.52	0.48	1.87	1.42	1.57	0.49	1.94	1.05	1.19	1.01	1.10	1.07	1.01	0.84	0.71	0.61	0.56	0.45	0.46
	1983-1992	0.50	0.43	0.80	1.19	0.73	0.70	1.25	1.27	0.94	1.14	1.09	0.98	0.89	0.75	0.70	0.59	0.57	0.42	0.45
	1993-1997	0.55	0.00	0.00	2.29	2.02	1.86	1.57	1.84	1.14	1.29	1.26	1.11	1.03	0.85	0.72	0.62	0.57	0.59	0.49
	1998-2002	0.61	0.96	1.84	1.65	0.79	1.04	0.80	1.53	1.72	1.71	1.44	1.10	1.09	1.02	0.80	0.69	0.70	0.65	0.58
	1993-2002	0.58	0.41	0.91	2.01	1.45	1.47	1.18	1.69	1.43	1.49	1.35	1.10	1.06	0.93	0.76	0.66	0.64	0.62	0.54
	2003-2007	0.65	0.00	0.00	0.00	3.09	0.57	1.80	1.32	1.83	1.28	1.09	1.45	1.16	0.96	0.99	0.87	0.72	0.65	0.66
2008-2012	0.68	0.00	0.00	0.00	1.13	1.73	0.71	1.18	1.60	1.33	1.44	1.38	1.37	1.18	1.03	0.93	0.79	0.66	0.72	
2003-2012	0.66	0.00	0.00	0.00	2.16	1.02	1.30	1.25	1.71	1.31	1.25	1.41	1.25	1.07	1.02	0.89	0.75	0.66	0.69	
女	1973-1977	0.62	1.09	0.00	0.93	1.77	1.84	1.07	0.69	1.48	1.28	1.53	1.22	1.00	0.89	0.64	0.61	0.56	0.48	0.36
	1978-1982	0.56	1.22	1.21	0.00	0.00	1.02	1.31	0.95	0.79	1.21	1.03	1.02	0.80	0.81	0.52	0.53	0.49	0.44	0.43
	1973-1982	0.59	1.13	0.55	0.52	1.05	1.49	1.18	0.82	1.16	1.24	1.28	1.12	0.91	0.85	0.59	0.57	0.53	0.47	0.40
	1983-1987	0.54	1.57	1.59	0.00	0.00	0.00	1.05	1.37	0.90	1.34	1.14	1.13	0.93	0.70	0.65	0.61	0.53	0.39	0.41
	1988-1992	0.52	0.75	0.00	1.66	3.01	1.61	0.87	2.06	1.21	1.16	0.78	1.03	0.99	0.91	0.55	0.58	0.51	0.47	0.39
	1983-1992	0.53	1.23	0.94	0.68	1.28	0.61	0.99	1.65	1.02	1.25	0.99	1.08	0.96	0.80	0.61	0.59	0.52	0.43	0.40
	1993-1997	0.55	0.86	0.00	1.68	1.01	0.00	0.42	0.77	1.98	1.43	1.56	1.40	1.09	1.04	0.63	0.74	0.56	0.50	0.43
	1998-2002	0.56	1.73	4.54	1.47	0.00	1.49	3.51	0.91	1.69	0.87	0.95	0.94	1.10	0.98	0.85	0.60	0.62	0.50	0.56
	1993-2002	0.55	1.15	2.29	1.57	0.54	0.72	1.92	0.84	1.85	1.17	1.24	1.16	1.10	1.01	0.73	0.67	0.59	0.50	0.50
	2003-2007	0.57	0.00	0.00	2.01	0.00	0.93	0.48	1.01	1.99	1.02	1.32	1.32	0.80	1.38	0.86	0.85	0.65	0.59	0.57
2008-2012	0.60	0.00	0.00	0.00	2.59	1.88	0.00	1.83	1.23	1.36	1.61	1.33	0.82	0.89	0.90	0.88	0.73	0.64	0.69	
2003-2012	0.59	0.00	0.00	0.91	1.30	1.41	0.26	1.38	1.59	1.18	1.46	1.32	0.79	1.13	0.89	0.86	0.68	0.62	0.64	

脳血管疾患

● 期間別にみた年齢階級別死亡率（沖縄、全国：1973-1982）

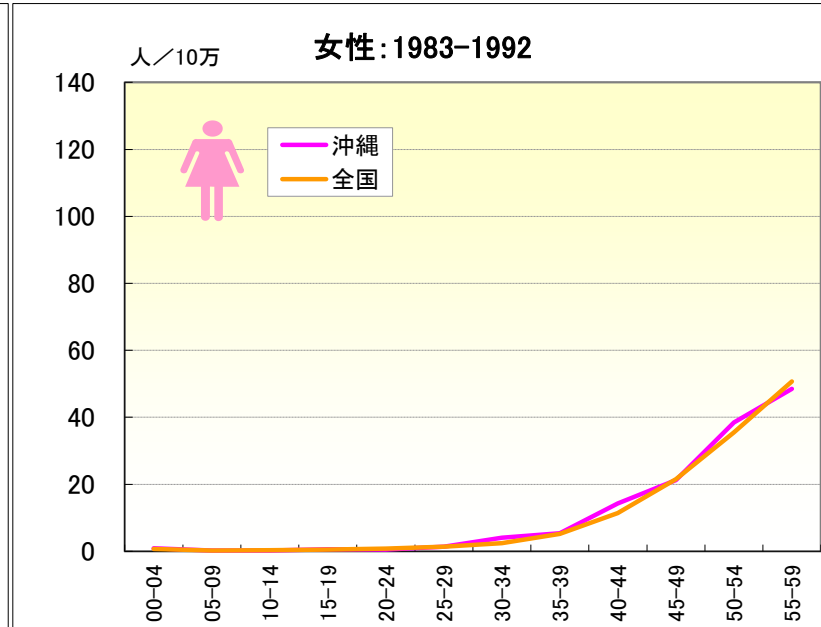
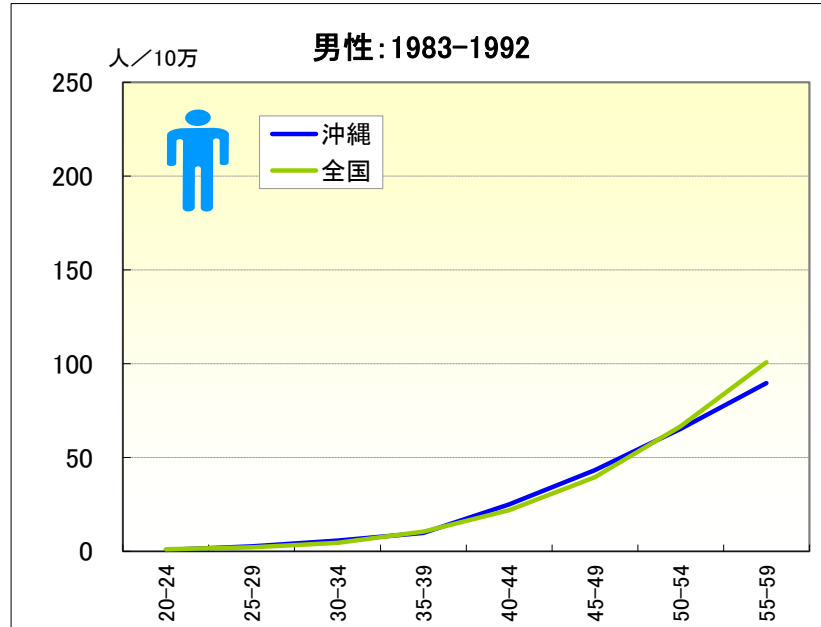


● 期間別にみた年齢階級別死亡率比（沖縄／全国：1973-1982）

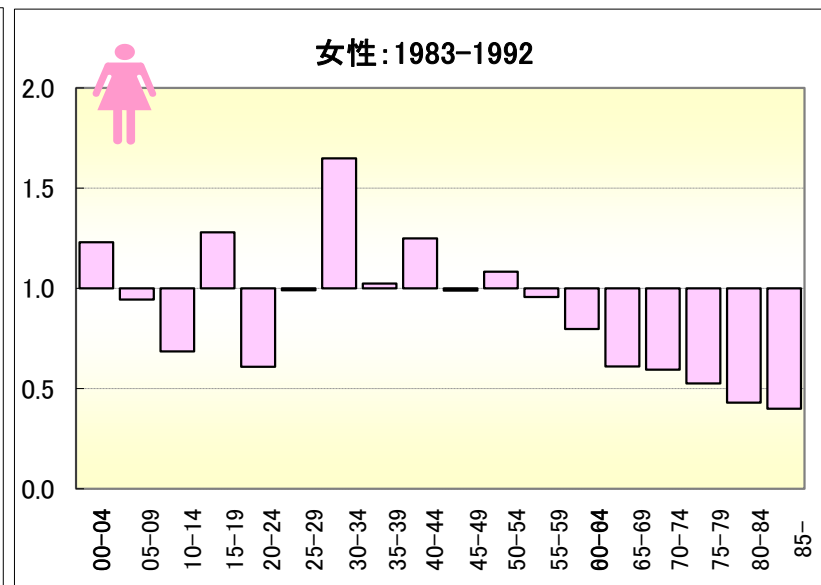
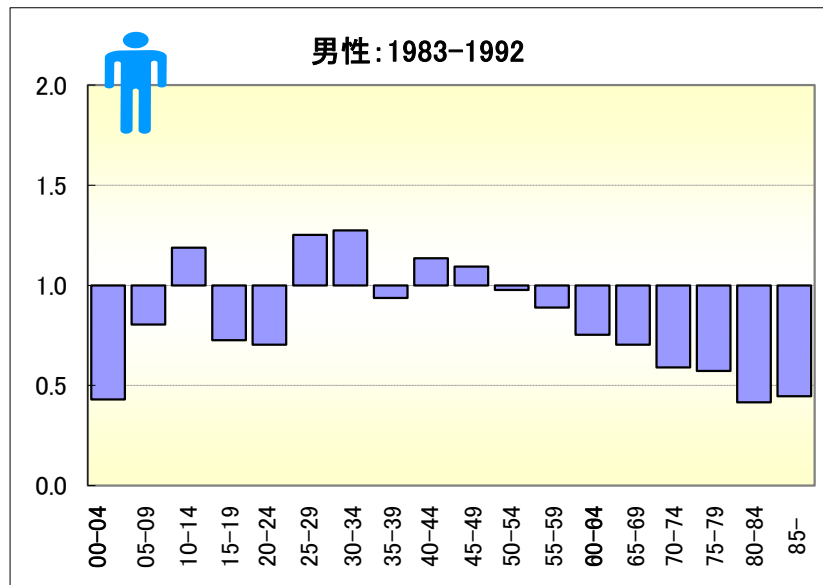


脳血管疾患

● 期間別にみた年齢階級別死亡率（沖縄、全国：1983-1992）

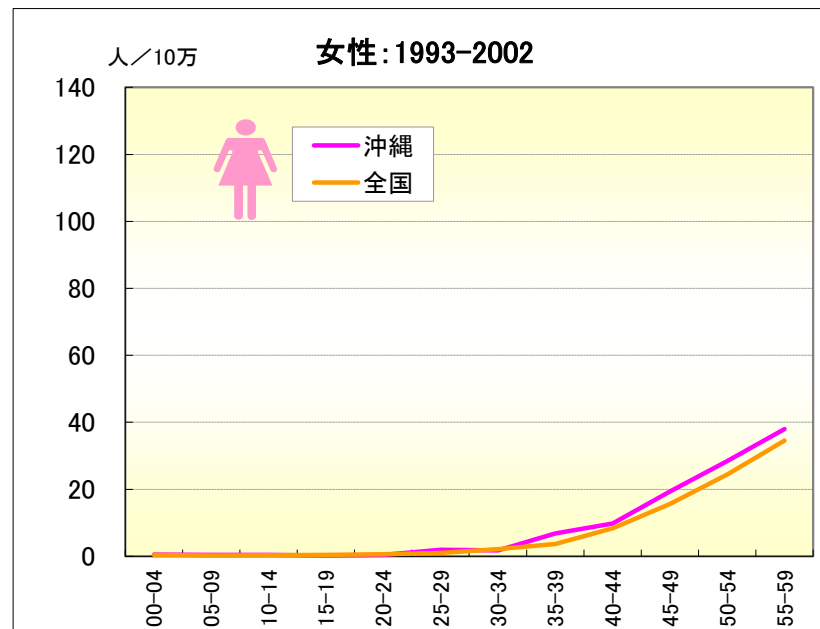
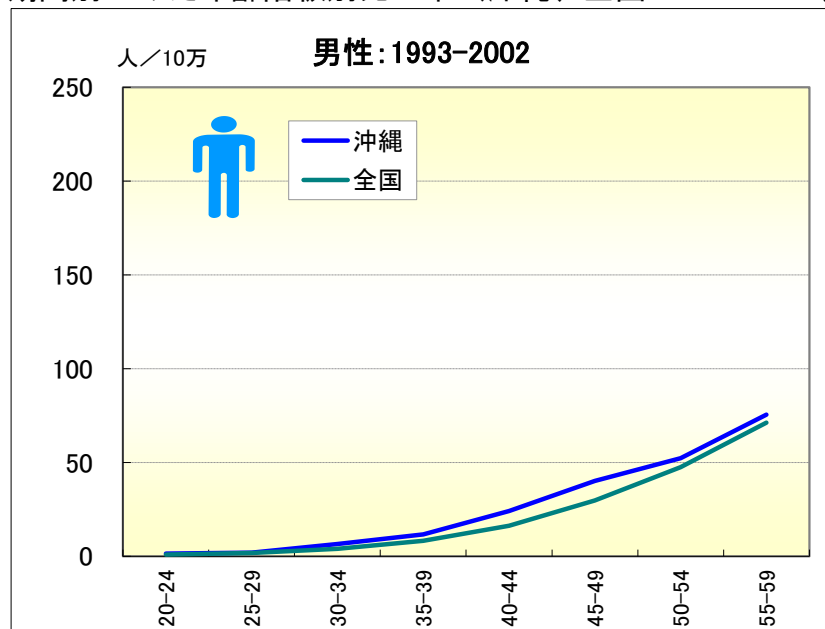


● 期間別にみた年齢階級別死亡率比（沖縄／全国：1983-1992）

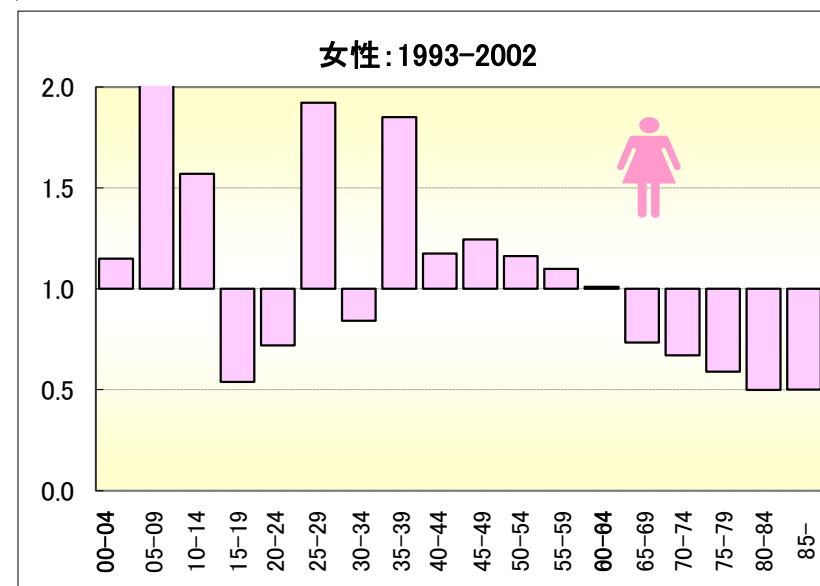
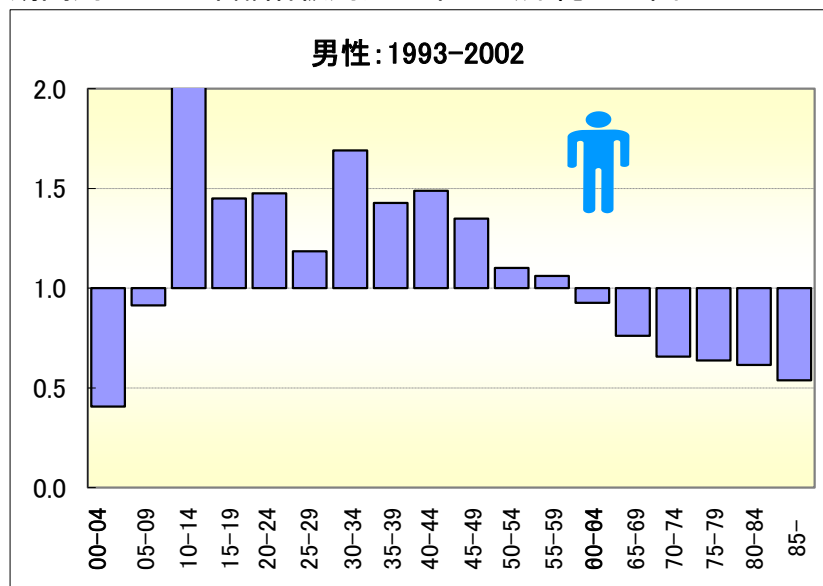


脳血管疾患

● 期間別にみた年齢階級別死亡率（沖縄、全国：1993-2002）

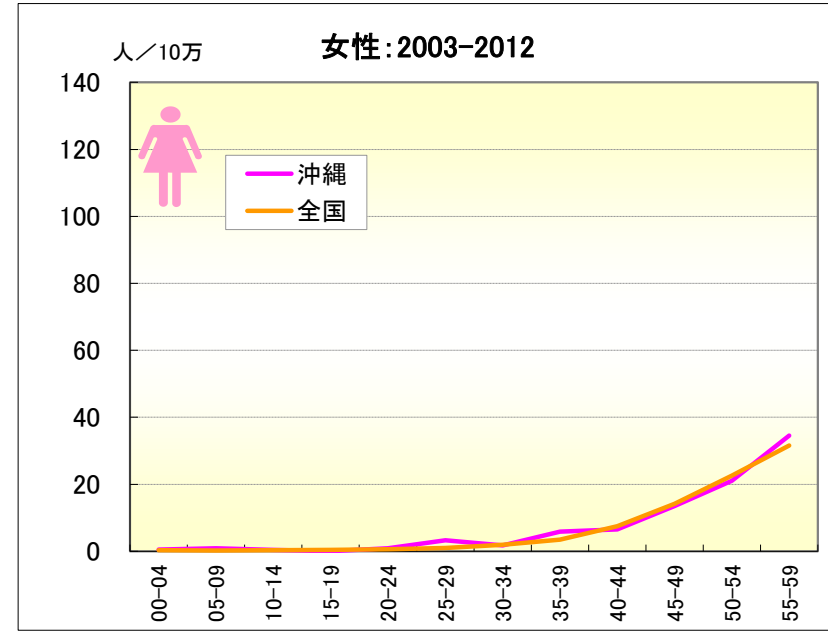
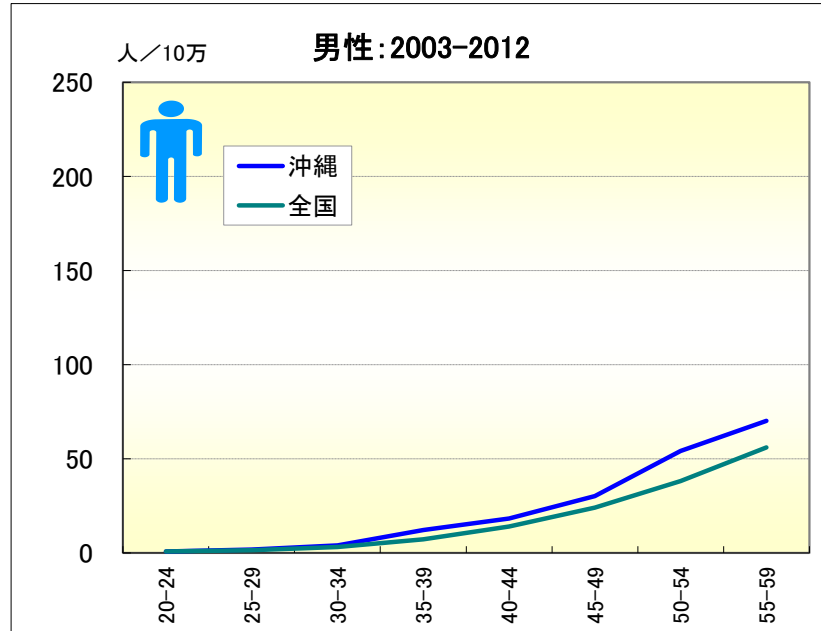


● 期間別にみた年齢階級別死亡率比（沖縄／全国：1993-2002）

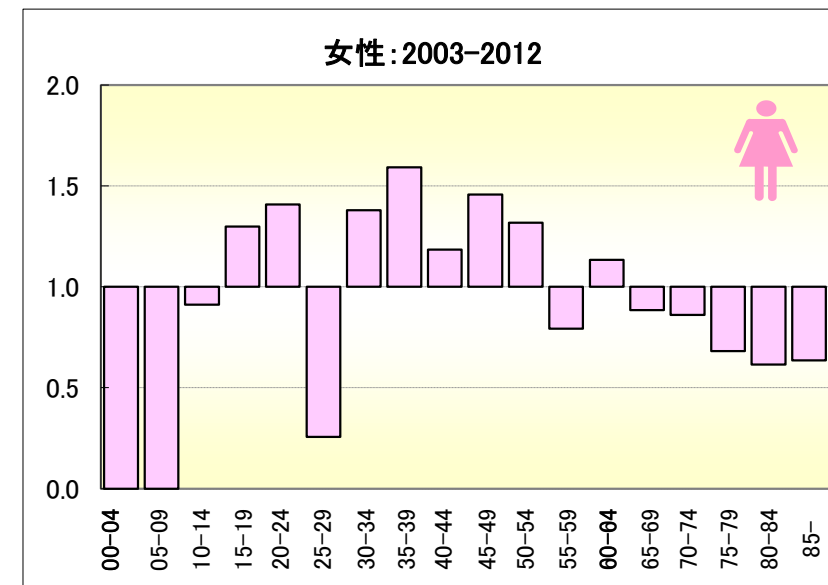
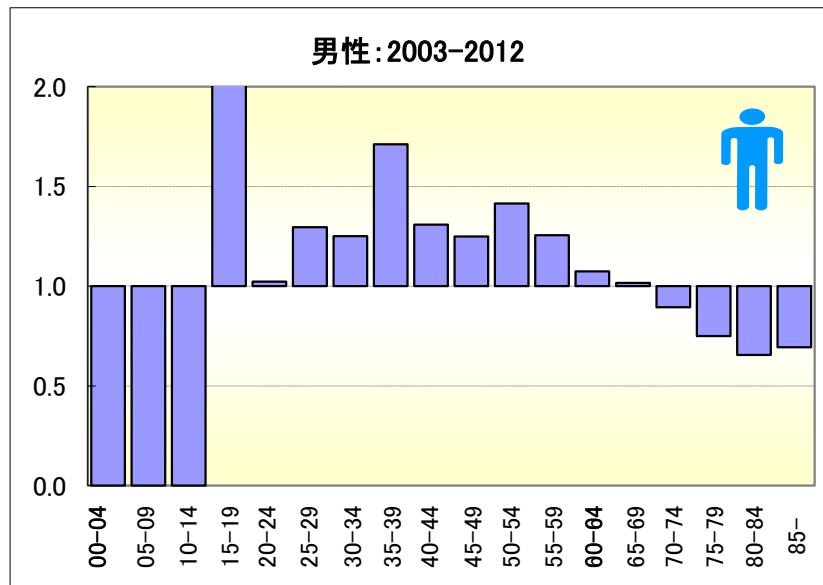


脳血管疾患

● 期間別にみた年齢階級別死亡率（沖縄、全国：2003-2012）

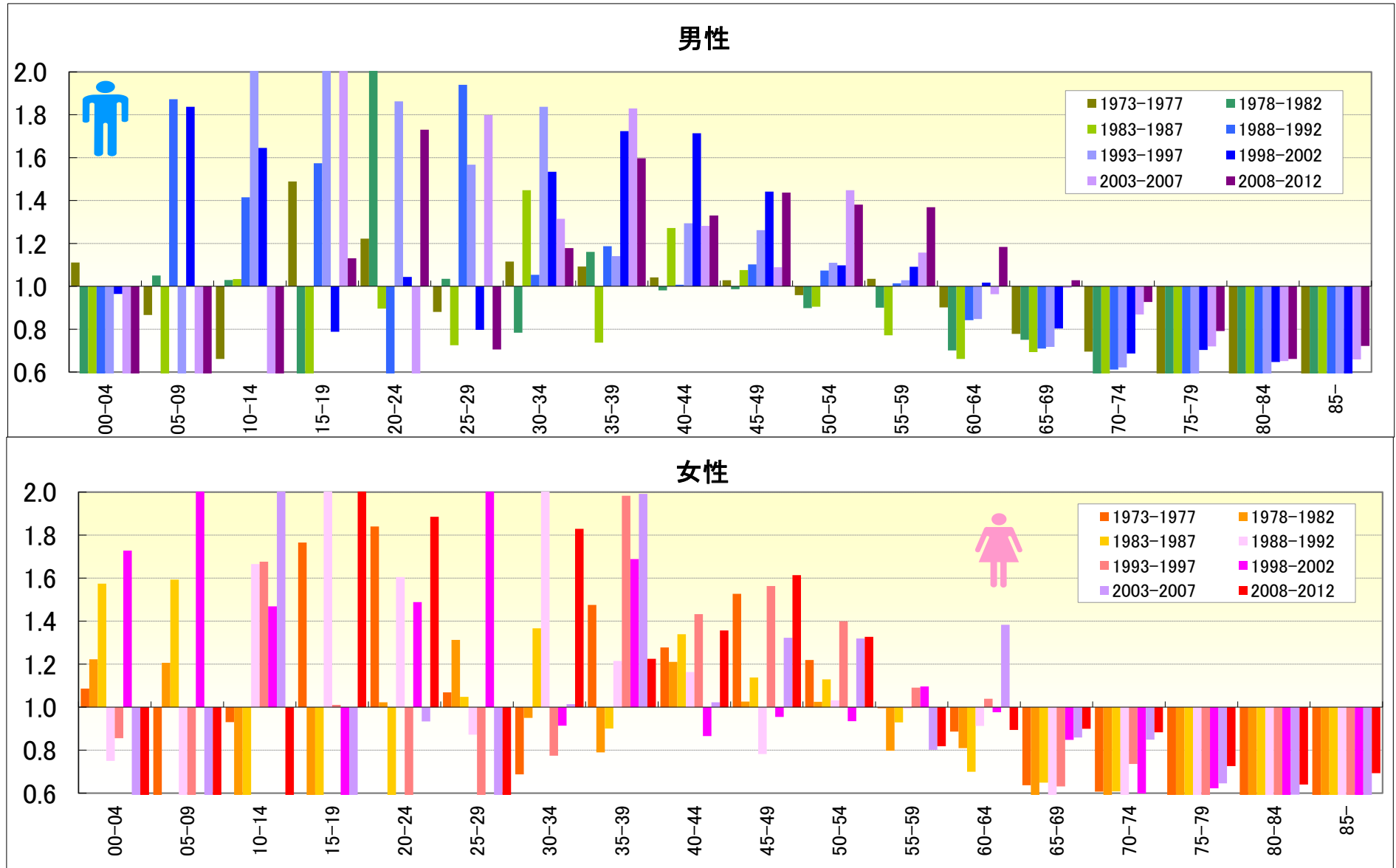


● 期間別にみた年齢階級別死亡率比（沖縄／全国：2003-2012）



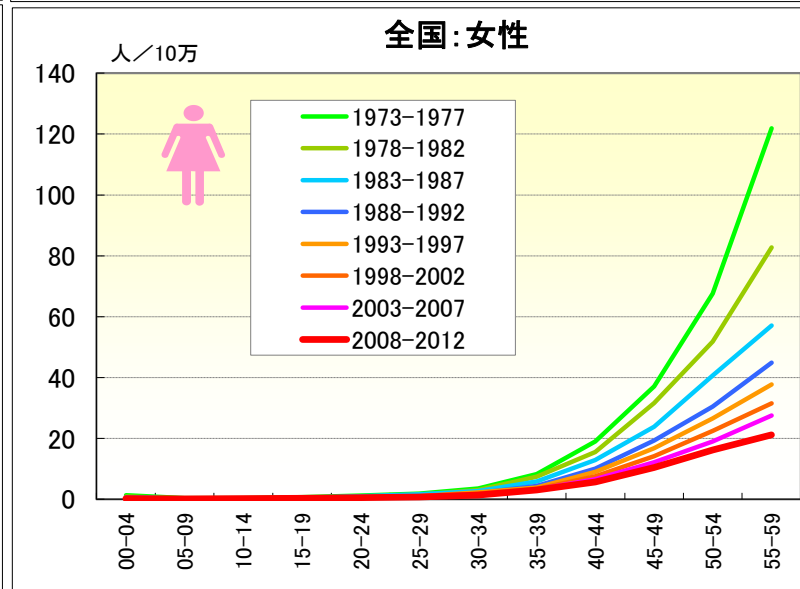
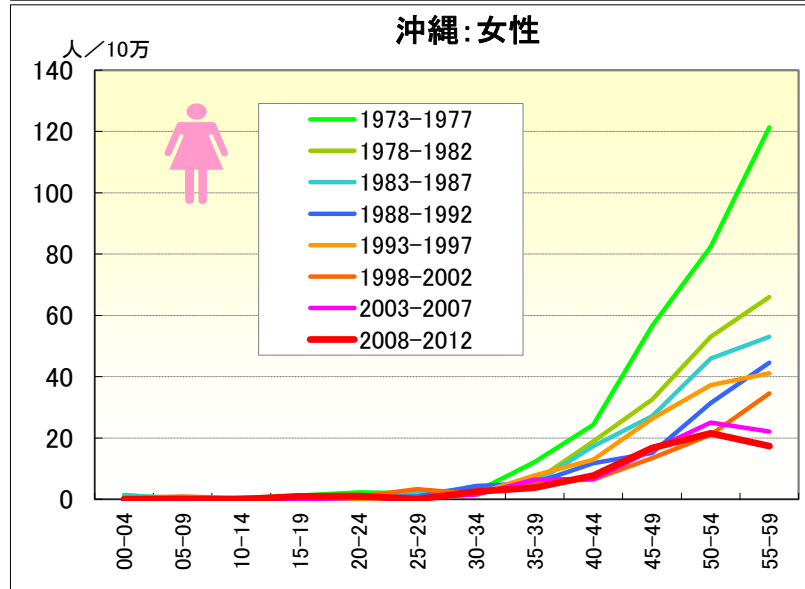
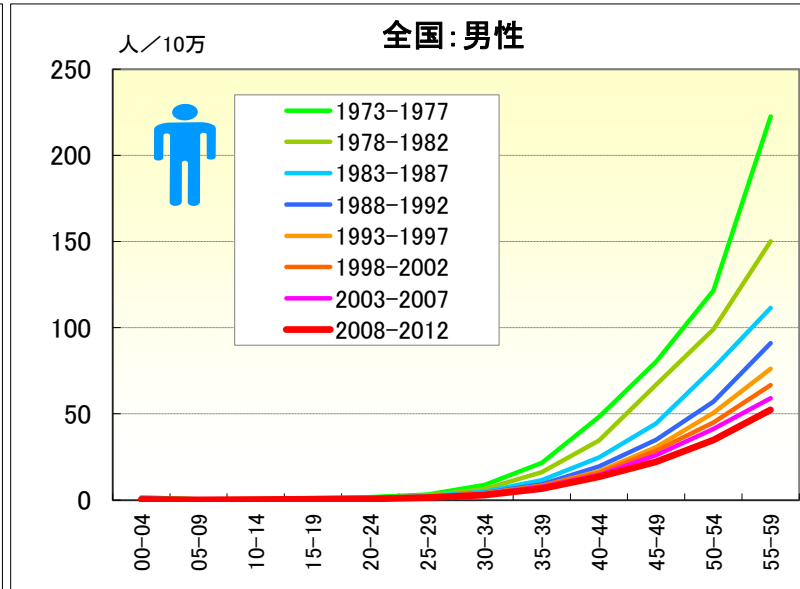
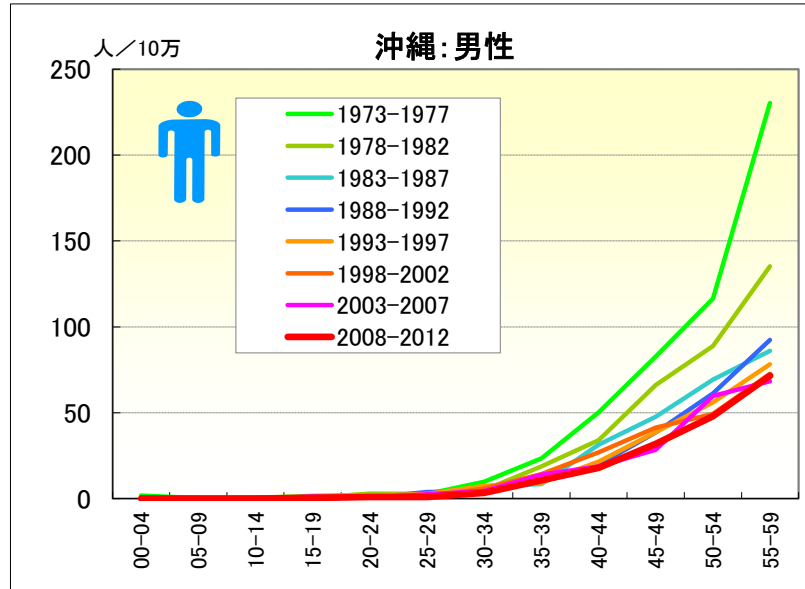
脳血管疾患

● 期間（5年）別にみた年齢階級別死亡率比の推移（沖縄／全国：1973-2012）



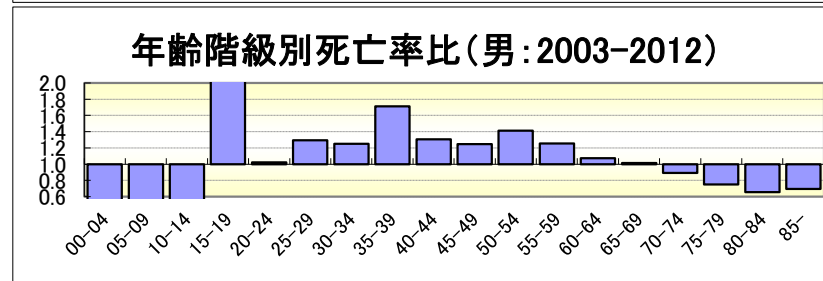
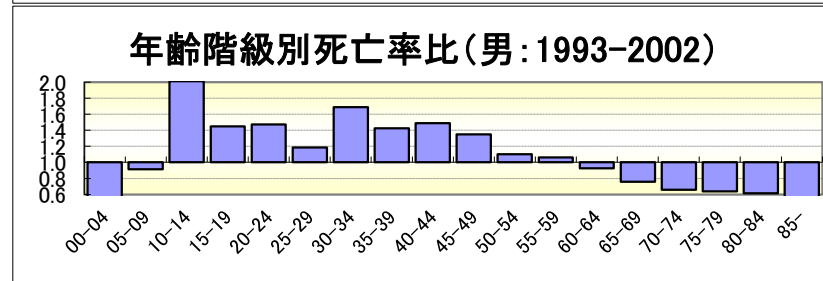
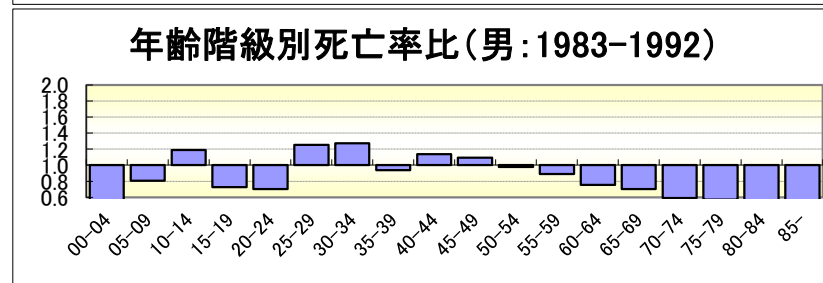
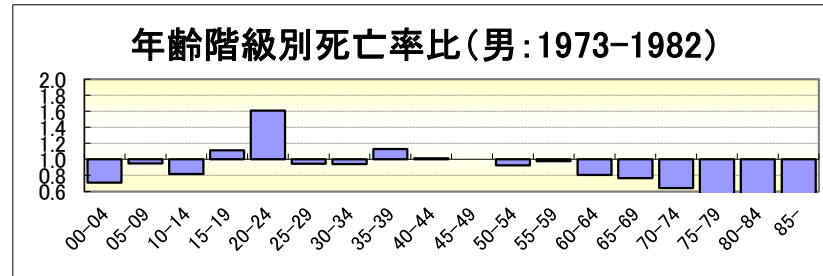
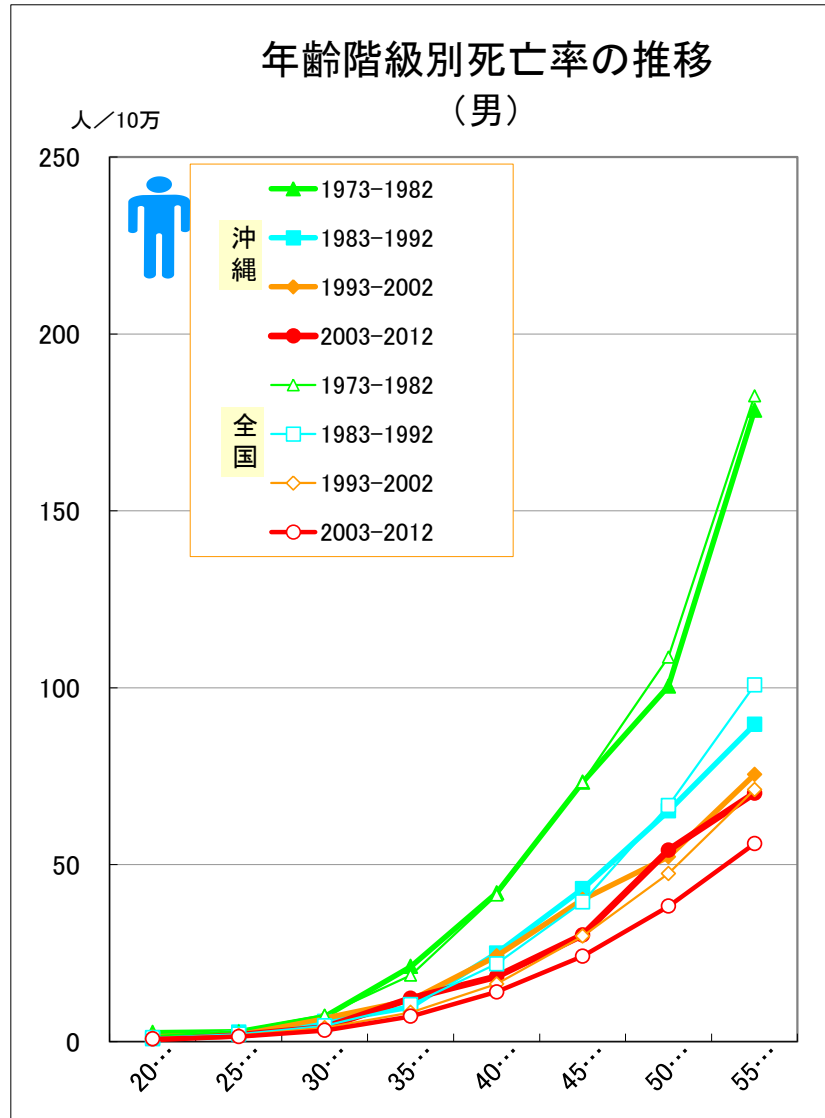
脳血管疾患

● 期間（5年）別にみた年齢階級別死亡率の推移（沖縄・全国：1973-2012）



脳血管疾患

● 期間（10年）別にみた年齢階級別死亡率および年齢階級別死亡率比の推移（沖縄・全国：男1973-2012）



脳血管疾患

● 期間（10年）別にみた年齢階級別死亡率および年齢階級別死亡率比の推移（沖縄・全国：女1973-2012）

