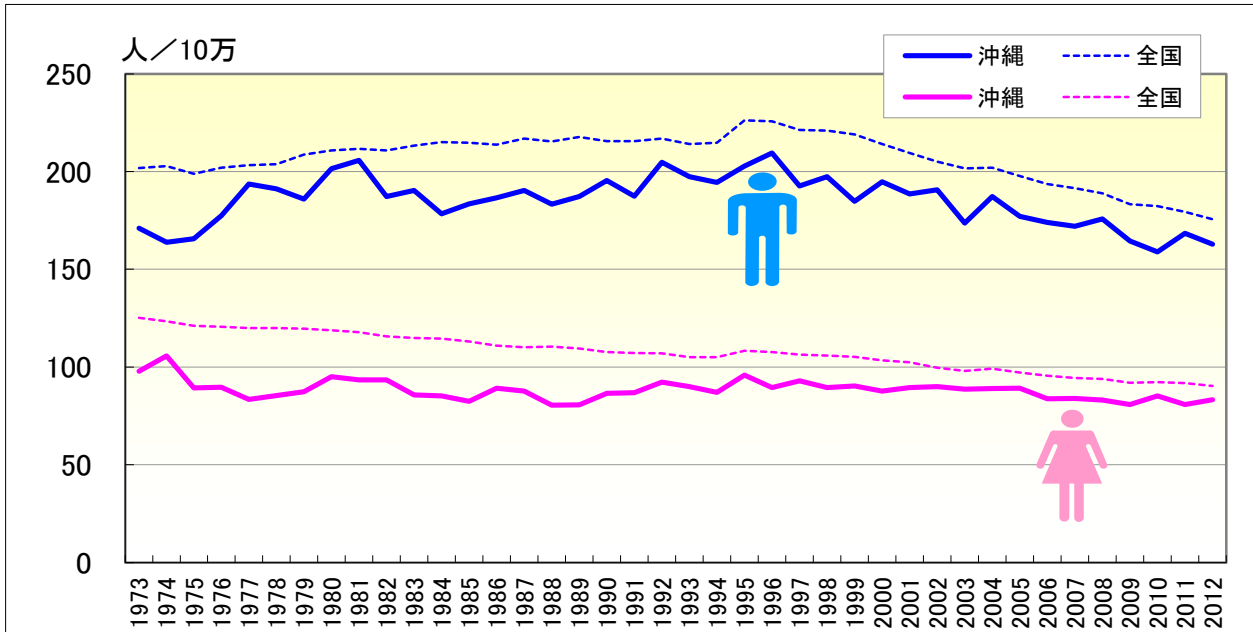


# がん

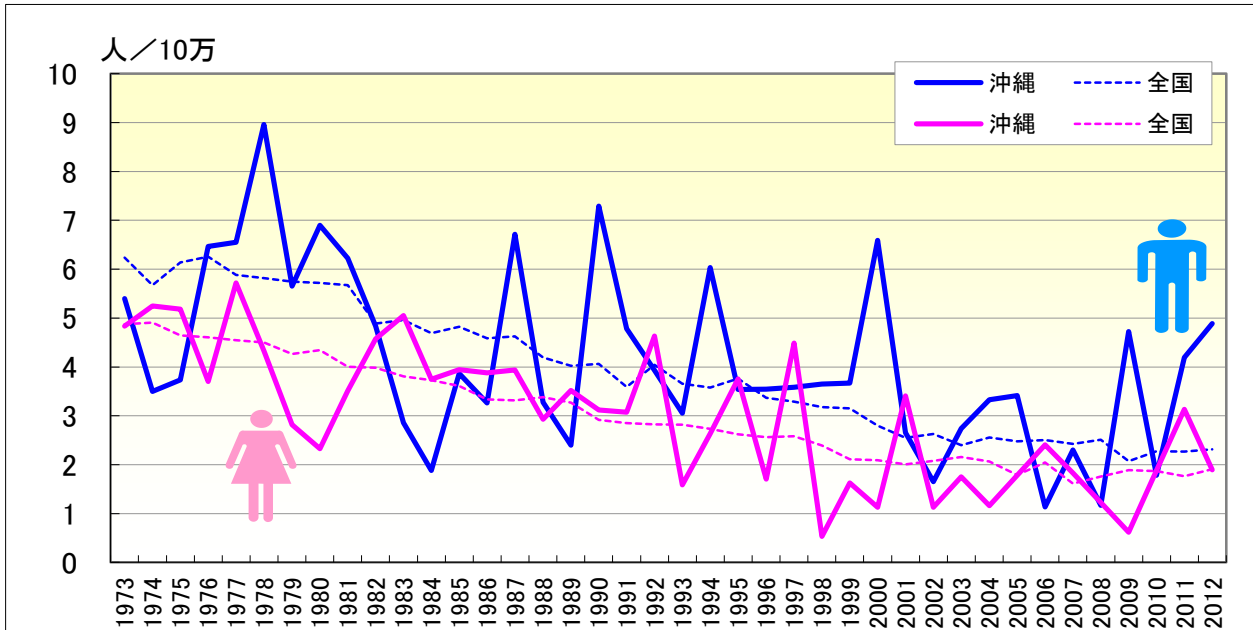
## ● 年齢調整死亡率の年次推移（沖縄、全国：1973-2012）



	男性				女性			
	粗死亡率		年齢調整死亡率		粗死亡率		年齢調整死亡率	
	沖縄	全国	沖縄	全国	沖縄	全国	沖縄	全国
1973	90.07	138.49	171.07	201.88	73.79	104.51	97.78	125.22
1974	87.08	140.56	163.85	202.78	82.08	104.59	105.64	123.41
1975	90.08	140.55	165.60	198.88	71.09	105.19	89.37	121.09
1976	100.40	144.57	177.44	202.02	73.05	106.68	89.72	120.65
1977	111.22	148.73	193.66	203.35	70.17	108.75	83.51	120.03
1978	113.80	151.93	191.15	203.81	73.74	111.28	85.41	120.03
1979	109.38	158.59	185.95	208.64	76.51	113.47	87.43	119.60
1980	121.55	163.46	201.54	210.86	85.28	115.47	95.13	118.77
1981	126.47	167.41	205.75	211.56	85.63	117.33	93.50	117.78
1982	119.04	170.73	187.28	210.73	88.41	118.45	93.44	115.66
1983	122.80	176.83	190.38	213.27	82.35	120.75	85.80	114.83
1984	116.51	182.29	178.39	215.08	85.27	123.67	85.28	114.63
1985	122.26	187.22	183.55	214.82	85.94	125.94	82.49	113.14
1986	129.01	191.08	186.51	213.82	94.86	126.92	89.17	110.90
1987	138.07	199.51	190.31	216.92	94.39	130.07	87.65	110.07
1988	136.54	203.46	183.28	215.47	90.00	134.46	80.43	110.48
1989	144.13	211.39	187.18	217.76	92.17	137.12	80.65	109.45
1990	154.84	216.42	195.39	215.59	101.07	139.29	86.49	107.70
1991	152.57	222.54	187.43	215.60	102.22	142.40	86.85	107.13
1992	170.65	230.46	204.73	216.83	112.38	146.68	92.30	106.96
1993	170.10	234.19	197.39	214.11	110.60	148.25	89.93	105.03
1994	171.83	241.45	194.42	214.70	112.27	153.05	86.99	105.08
1995	182.72	262.02	202.73	226.16	125.40	163.14	95.90	108.27
1996	198.28	269.69	209.55	225.73	121.01	167.25	89.50	107.75
1997	187.59	272.96	192.60	221.30	129.37	169.93	92.96	106.38
1998	198.79	281.04	197.33	221.03	132.45	174.56	89.48	105.85
1999	192.94	286.54	184.80	218.96	130.82	179.07	90.39	105.22
2000	206.26	291.34	194.83	214.03	129.66	181.43	87.75	103.48
2001	208.80	294.49	188.56	209.43	137.12	185.44	89.55	102.49
2002	219.13	298.80	190.67	205.08	145.08	187.12	90.00	99.72
2003	204.96	303.33	173.60	201.70	143.83	190.07	88.73	98.05
2004	226.83	313.48	187.20	202.03	148.43	197.06	88.95	99.20
2005	221.05	319.07	177.15	197.74	151.66	200.25	89.21	97.28
2006	225.35	321.68	173.94	193.58	146.77	203.09	83.80	95.63
2007	231.55	329.60	171.98	191.50	152.26	206.76	83.90	94.44
2008	242.15	335.95	175.84	188.95	155.28	211.07	83.12	94.00
2009	233.30	336.41	164.50	183.30	151.57	212.70	80.77	91.91
2010	233.50	343.40	158.95	182.37	164.20	219.20	85.24	92.22
2011	254.51	346.92	168.39	179.43	155.27	222.65	80.76	91.81
2012	252.14	350.75	162.93	175.68	166.50	225.67	83.22	90.29

# がん

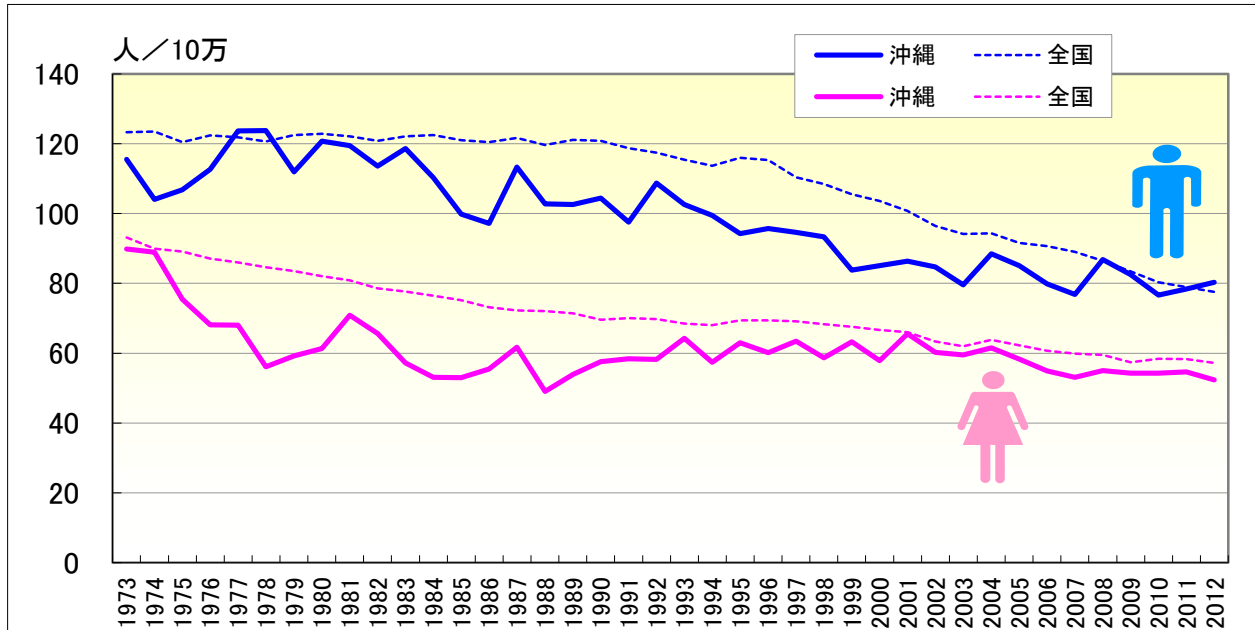
## ● 年齢調整死亡率（0-19歳）の年次推移（沖縄、全国：1973-2012）



	男性				女性			
	年齢調整死亡率		0-19年齢調整死亡率		年齢調整死亡率		0-19年齢調整死亡率	
	沖縄	全国	沖縄	全国	沖縄	全国	沖縄	全国
1973	171.07	201.88	5.40	6.24	97.78	125.22	4.84	4.88
1974	163.85	202.78	3.50	5.67	105.64	123.41	5.25	4.91
1975	165.60	198.88	3.73	6.14	89.37	121.09	5.18	4.65
1976	177.44	202.02	6.46	6.25	89.72	120.65	3.71	4.61
1977	193.66	203.35	6.55	5.88	83.51	120.03	5.72	4.55
1978	191.15	203.81	8.96	5.82	85.41	120.03	4.33	4.50
1979	185.95	208.64	5.65	5.74	87.43	119.60	2.82	4.27
1980	201.54	210.86	6.90	5.72	95.13	118.77	2.33	4.35
1981	205.75	211.56	6.22	5.67	93.50	117.78	3.51	4.00
1982	187.28	210.73	4.83	4.89	93.44	115.66	4.57	3.99
1983	190.38	213.27	2.86	4.96	85.80	114.83	5.05	3.81
1984	178.39	215.08	1.88	4.69	85.28	114.63	3.75	3.73
1985	183.55	214.82	3.87	4.82	82.49	113.14	3.95	3.61
1986	186.51	213.82	3.27	4.59	89.17	110.90	3.88	3.34
1987	190.31	216.92	6.72	4.63	87.65	110.07	3.94	3.32
1988	183.28	215.47	3.28	4.19	80.43	110.48	2.93	3.38
1989	187.18	217.76	2.40	4.03	80.65	109.45	3.52	3.27
1990	195.39	215.59	7.29	4.06	86.49	107.70	3.12	2.92
1991	187.43	215.60	4.79	3.59	86.85	107.13	3.08	2.85
1992	204.73	216.83	3.93	4.05	92.30	106.96	4.64	2.83
1993	197.39	214.11	3.06	3.66	89.93	105.03	1.59	2.82
1994	194.42	214.70	6.03	3.58	86.99	105.08	2.64	2.74
1995	202.73	226.16	3.54	3.76	95.90	108.27	3.76	2.62
1996	209.55	225.73	3.54	3.37	89.50	107.75	1.71	2.56
1997	192.60	221.30	3.58	3.29	92.96	106.38	4.49	2.58
1998	197.33	221.03	3.65	3.18	89.48	105.85	0.53	2.39
1999	184.80	218.96	3.67	3.15	90.39	105.22	1.63	2.11
2000	194.83	214.03	6.59	2.80	87.75	103.48	1.13	2.09
2001	188.56	209.43	2.65	2.55	89.55	102.49	3.41	2.00
2002	190.67	205.08	1.65	2.63	90.00	99.72	1.13	2.08
2003	173.60	201.70	2.74	2.40	88.73	98.05	1.75	2.16
2004	187.20	202.03	3.33	2.55	88.95	99.20	1.16	2.07
2005	177.15	197.74	3.42	2.48	89.21	97.28	1.78	1.79
2006	173.94	193.58	1.13	2.51	83.80	95.63	2.41	2.04
2007	171.98	191.50	2.30	2.43	83.90	94.44	1.83	1.61
2008	175.84	188.95	1.17	2.51	83.12	94.00	1.22	1.76
2009	164.50	183.30	4.72	2.07	80.77	91.91	0.62	1.89
2010	158.95	182.37	1.78	2.28	85.24	92.22	1.88	1.87
2011	168.39	179.43	4.19	2.27	80.76	91.81	3.13	1.77
2012	162.93	175.68	4.89	2.32	83.22	90.29	1.89	1.91

# がん

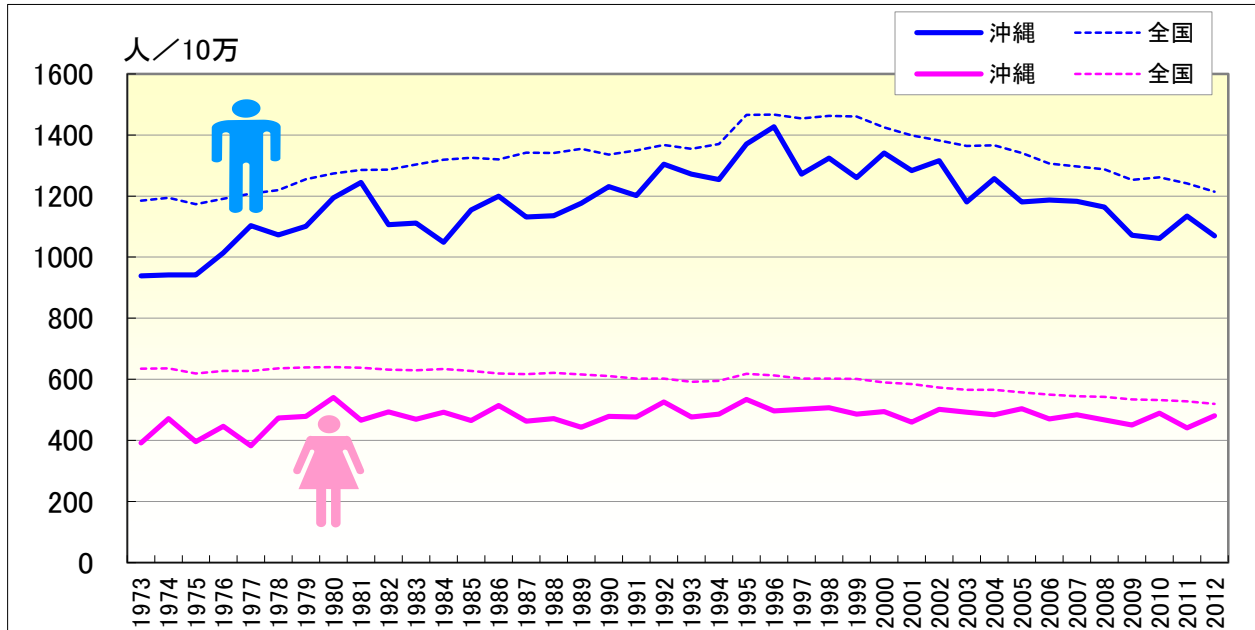
## ● 年齢調整死亡率（20-64歳）の年次推移（沖縄、全国：1973-2012）



	男性				女性			
	年齢調整死亡率		20-64年齢調整死亡率		年齢調整死亡率		20-64年齢調整死亡率	
	沖縄	全国	沖縄	全国	沖縄	全国	沖縄	全国
1973	171.07	201.88	115.48	123.28	97.78	125.22	89.88	93.14
1974	163.85	202.78	104.10	123.47	105.64	123.41	88.91	89.98
1975	165.60	198.88	106.82	120.46	89.37	121.09	75.42	89.11
1976	177.44	202.02	112.66	122.44	89.72	120.65	68.11	87.10
1977	193.66	203.35	123.71	121.85	83.51	120.03	68.02	86.01
1978	191.15	203.81	123.80	120.65	85.41	120.03	56.16	84.67
1979	185.95	208.64	111.99	122.51	87.43	119.60	59.27	83.54
1980	201.54	210.86	120.79	122.88	95.13	118.77	61.36	82.02
1981	205.75	211.56	119.45	122.08	93.50	117.78	70.91	80.90
1982	187.28	210.73	113.59	120.88	93.44	115.66	65.64	78.56
1983	190.38	213.27	118.61	122.17	85.80	114.83	57.18	77.62
1984	178.39	215.08	110.32	122.50	85.28	114.63	53.07	76.51
1985	183.55	214.82	99.82	121.06	82.49	113.14	52.96	75.19
1986	186.51	213.82	97.16	120.47	89.17	110.90	55.46	73.17
1987	190.31	216.92	113.31	121.68	87.65	110.07	61.71	72.24
1988	183.28	215.47	102.76	119.61	80.43	110.48	49.07	72.11
1989	187.18	217.76	102.56	121.14	80.65	109.45	53.91	71.41
1990	195.39	215.59	104.42	120.88	86.49	107.70	57.61	69.61
1991	187.43	215.60	97.57	118.75	86.85	107.13	58.45	70.08
1992	204.73	216.83	108.70	117.46	92.30	106.96	58.20	69.81
1993	197.39	214.11	102.62	115.46	89.93	105.03	64.26	68.52
1994	194.42	214.70	99.53	113.73	86.99	105.08	57.38	68.08
1995	202.73	226.16	94.21	115.95	95.90	108.27	63.03	69.43
1996	209.55	225.73	95.75	115.37	89.50	107.75	60.13	69.44
1997	192.60	221.30	94.60	110.36	92.96	106.38	63.44	69.13
1998	197.33	221.03	93.31	108.47	89.48	105.85	58.70	68.34
1999	184.80	218.96	83.80	105.49	90.39	105.22	63.26	67.56
2000	194.83	214.03	85.13	103.64	87.75	103.48	57.86	66.71
2001	188.56	209.43	86.40	100.78	89.55	102.49	65.58	65.98
2002	190.67	205.08	84.75	96.46	90.00	99.72	60.24	63.37
2003	173.60	201.70	79.60	94.19	88.73	98.05	59.52	62.02
2004	187.20	202.03	88.45	94.34	88.95	99.20	61.53	63.78
2005	177.15	197.74	85.11	91.58	89.21	97.28	58.33	62.24
2006	173.94	193.58	79.90	90.69	83.80	95.63	54.91	60.70
2007	171.98	191.50	76.79	89.03	83.90	94.44	53.12	59.91
2008	175.84	188.95	86.84	86.48	83.12	94.00	54.98	59.50
2009	164.50	183.30	82.48	83.44	80.77	91.91	54.26	57.44
2010	158.95	182.37	76.69	80.28	85.24	92.22	54.31	58.37
2011	168.39	179.43	78.42	78.94	80.76	91.81	54.68	58.33
2012	162.93	175.68	80.30	77.54	83.22	90.29	52.36	57.24

# がん

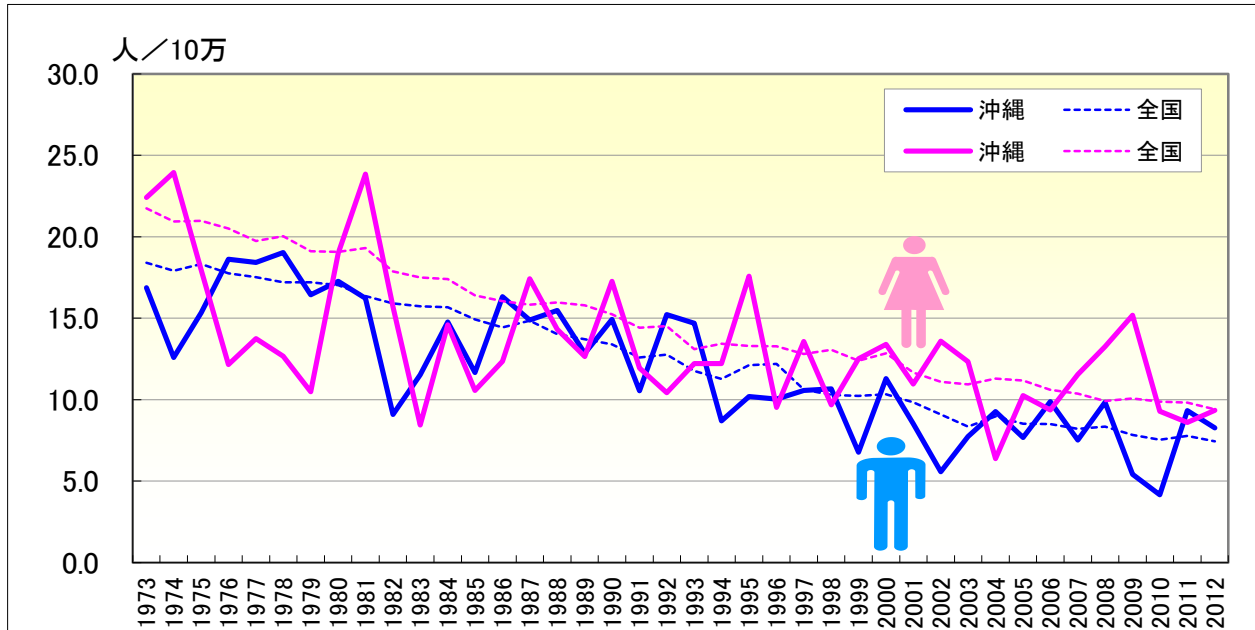
## ● 年齢調整死亡率（65歳以上）の年次推移（沖縄、全国：1973-2012）



	男性				女性			
	年齢調整死亡率		65-年齢調整死亡率		年齢調整死亡率		65-年齢調整死亡率	
	沖縄	全国	沖縄	全国	沖縄	全国	沖縄	全国
1973	171.07	201.88	939.11	1184.90	97.78	125.22	392.16	634.51
1974	163.85	202.78	942.10	1193.91	105.64	123.41	471.68	635.69
1975	165.60	198.88	942.21	1173.04	89.37	121.09	395.82	619.33
1976	177.44	202.02	1013.54	1191.08	89.72	120.65	445.96	627.07
1977	193.66	203.35	1103.15	1208.25	83.51	120.03	381.92	627.67
1978	191.15	203.81	1072.27	1219.86	85.41	120.03	473.29	635.66
1979	185.95	208.64	1100.80	1255.14	87.43	119.60	478.36	638.81
1980	201.54	210.86	1194.44	1274.25	95.13	118.77	540.80	639.64
1981	205.75	211.56	1244.28	1285.71	93.50	117.78	466.11	637.69
1982	187.28	210.73	1106.26	1286.92	93.44	115.66	493.59	631.20
1983	190.38	213.27	1111.59	1303.39	85.80	114.83	469.10	629.31
1984	178.39	215.08	1048.58	1319.43	85.28	114.63	491.80	634.09
1985	183.55	214.82	1154.08	1325.03	82.49	113.14	465.30	627.96
1986	186.51	213.82	1199.51	1319.54	89.17	110.90	514.48	619.21
1987	190.31	216.92	1131.79	1341.94	87.65	110.07	463.17	616.84
1988	183.28	215.47	1135.82	1341.38	80.43	110.48	471.18	621.30
1989	187.18	217.76	1176.53	1354.71	80.65	109.45	443.28	615.81
1990	195.39	215.59	1230.85	1335.46	86.49	107.70	478.35	610.67
1991	187.43	215.60	1201.71	1349.30	86.85	107.13	476.94	602.62
1992	204.73	216.83	1303.74	1367.42	92.30	106.96	526.24	602.69
1993	197.39	214.11	1271.77	1354.20	89.93	105.03	476.24	591.92
1994	194.42	214.70	1253.67	1370.25	86.99	105.08	485.74	595.20
1995	202.73	226.16	1370.69	1465.91	95.90	108.27	534.54	617.98
1996	209.55	225.73	1426.69	1466.30	89.50	107.75	496.06	613.09
1997	192.60	221.30	1271.69	1453.63	92.96	106.38	502.12	601.82
1998	197.33	221.03	1324.16	1462.41	89.48	105.85	507.32	601.93
1999	184.80	218.96	1260.44	1460.33	90.39	105.22	486.33	601.23
2000	194.83	214.03	1340.49	1425.10	87.75	103.48	494.24	589.70
2001	188.56	209.43	1283.76	1398.66	89.55	102.49	460.02	584.72
2002	190.67	205.08	1316.20	1382.32	90.00	99.72	501.69	573.45
2003	173.60	201.70	1180.83	1364.01	88.73	98.05	492.07	565.23
2004	187.20	202.03	1256.92	1365.85	88.95	99.20	484.06	566.07
2005	177.15	197.74	1180.49	1341.40	89.21	97.28	503.56	557.59
2006	173.94	193.58	1186.52	1306.80	83.80	95.63	470.40	550.22
2007	171.98	191.50	1182.95	1296.96	83.90	94.44	483.39	544.61
2008	175.84	188.95	1163.92	1287.37	83.12	94.00	466.63	542.48
2009	164.50	183.30	1071.92	1252.52	80.77	91.91	450.17	534.26
2010	158.95	182.37	1060.76	1261.66	85.24	92.22	489.06	531.82
2011	168.39	179.43	1134.11	1241.44	80.76	91.81	440.86	528.40
2012	162.93	175.68	1069.22	1213.81	83.22	90.29	481.25	519.90

# がん

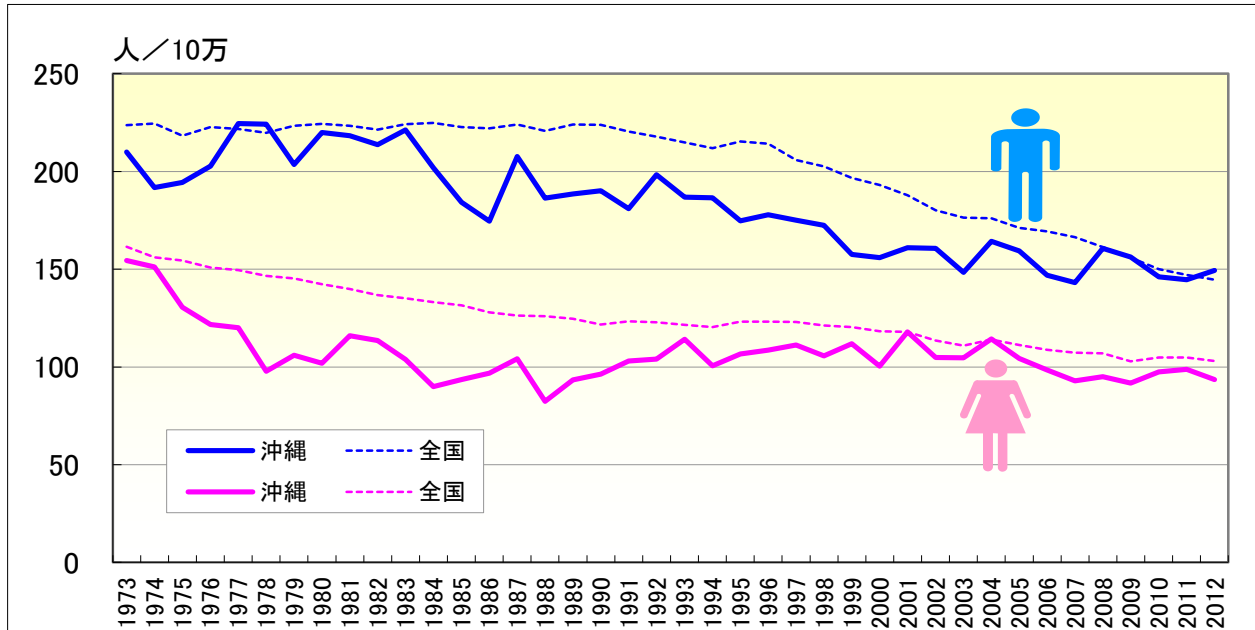
## ● 年齢調整死亡率（20-39歳）の年次推移（沖縄、全国：1973-2012）



	男性				女性			
	20-64年齢調整死亡率		20-39年齢調整死亡率		20-64年齢調整死亡率		20-39年齢調整死亡率	
	沖縄	全国	沖縄	全国	沖縄	全国	沖縄	全国
1973	115.48	123.28	16.87	18.41	89.88	93.14	22.41	21.74
1974	104.10	123.47	12.59	17.91	88.91	89.98	23.94	20.93
1975	106.82	120.46	15.33	18.31	75.42	89.11	17.96	20.98
1976	112.66	122.44	18.62	17.76	68.11	87.10	12.15	20.50
1977	123.71	121.85	18.42	17.52	68.02	86.01	13.75	19.73
1978	123.80	120.65	19.02	17.20	56.16	84.67	12.67	20.03
1979	111.99	122.51	16.44	17.21	59.27	83.54	10.48	19.11
1980	120.79	122.88	17.27	17.02	61.36	82.02	18.99	19.06
1981	119.45	122.08	16.23	16.35	70.91	80.90	23.85	19.30
1982	113.59	120.88	9.09	15.91	65.64	78.56	15.68	17.87
1983	118.61	122.17	11.53	15.73	57.18	77.62	8.45	17.51
1984	110.32	122.50	14.76	15.67	53.07	76.51	14.58	17.41
1985	99.82	121.06	11.67	14.93	52.96	75.19	10.57	16.40
1986	97.16	120.47	16.31	14.43	55.46	73.17	12.35	16.05
1987	113.31	121.68	14.88	14.84	61.71	72.24	17.42	15.82
1988	102.76	119.61	15.47	14.02	49.07	72.11	14.31	15.97
1989	102.56	121.14	12.84	13.70	53.91	71.41	12.65	15.78
1990	104.42	120.88	14.93	13.40	57.61	69.61	17.26	15.24
1991	97.57	118.75	10.55	12.60	58.45	70.08	11.94	14.41
1992	108.70	117.46	15.23	12.76	58.20	69.81	10.42	14.52
1993	102.62	115.46	14.69	11.75	64.26	68.52	12.20	13.10
1994	99.53	113.73	8.69	11.27	57.38	68.08	12.21	13.43
1995	94.21	115.95	10.19	12.11	63.03	69.43	17.57	13.29
1996	95.75	115.37	10.03	12.19	60.13	69.44	9.53	13.27
1997	94.60	110.36	10.56	10.62	63.44	69.13	13.56	12.81
1998	93.31	108.47	10.65	10.29	58.70	68.34	9.67	13.06
1999	83.80	105.49	6.78	10.24	63.26	67.56	12.50	12.39
2000	85.13	103.64	11.29	10.33	57.86	66.71	13.40	12.85
2001	86.40	100.78	8.52	9.83	65.58	65.98	10.96	11.67
2002	84.75	96.46	5.58	9.08	60.24	63.37	13.59	11.09
2003	79.60	94.19	7.74	8.34	59.52	62.02	12.32	10.93
2004	88.45	94.34	9.26	8.97	61.53	63.78	6.37	11.28
2005	85.11	91.58	7.67	8.52	58.33	62.24	10.26	11.16
2006	79.90	90.69	9.87	8.51	54.91	60.70	9.37	10.60
2007	76.79	89.03	7.52	8.21	53.12	59.91	11.55	10.38
2008	86.84	86.48	9.83	8.34	54.98	59.50	13.26	9.92
2009	82.48	83.44	5.41	7.83	54.26	57.44	15.17	10.08
2010	76.69	80.28	4.16	7.54	54.31	58.37	9.29	9.88
2011	78.42	78.94	9.32	7.77	54.68	58.33	8.60	9.81
2012	80.30	77.54	8.27	7.44	52.36	57.24	9.34	9.41

# がん

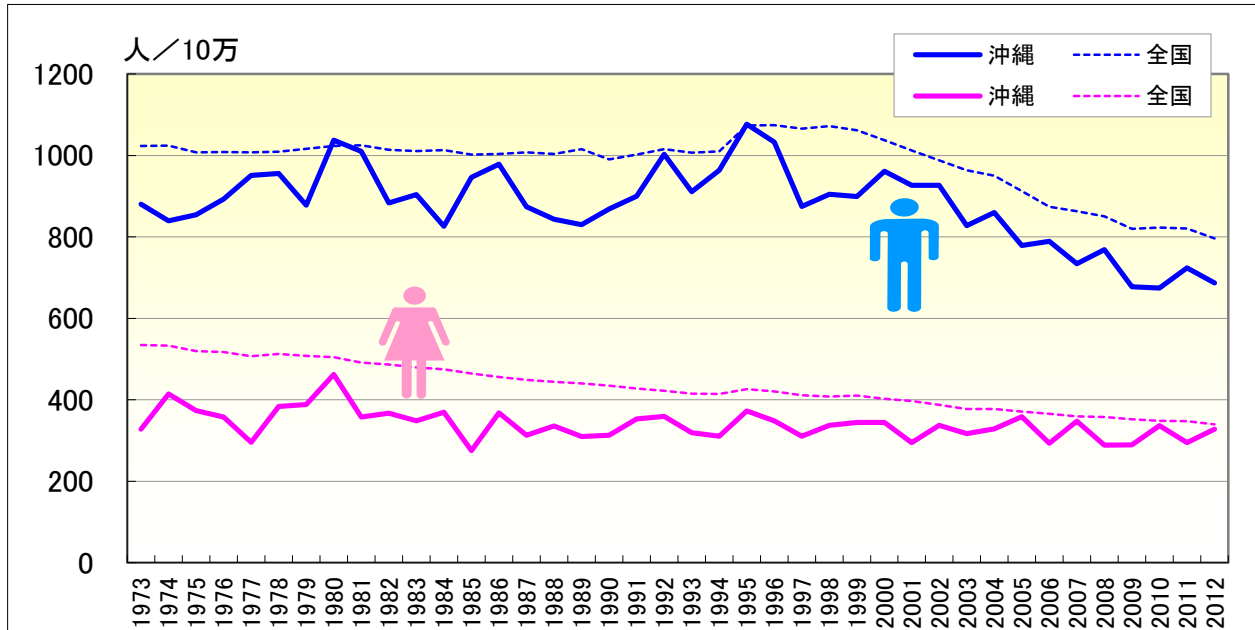
## ● 年齢調整死亡率（40-64歳）の年次推移（沖縄、全国：1973-2012）



	男性				女性			
	20-64年齢調整死亡率		40-64年齢調整死亡率		20-64年齢調整死亡率		40-64年齢調整死亡率	
	沖縄	全国	沖縄	全国	沖縄	全国	沖縄	全国
1973	115.48	123.28	209.95	223.75	89.88	93.14	154.50	161.54
1974	104.10	123.47	191.76	224.59	88.91	89.98	151.15	156.12
1975	106.82	120.46	194.46	218.31	75.42	89.11	130.47	154.37
1976	112.66	122.44	202.74	222.72	68.11	87.10	121.72	150.89
1977	123.71	121.85	224.58	221.80	68.02	86.01	120.01	149.50
1978	123.80	120.65	224.17	219.75	56.16	84.67	97.82	146.58
1979	111.99	122.51	203.52	223.38	59.27	83.54	106.01	145.27
1980	120.79	122.88	219.96	224.30	61.36	82.02	101.95	142.34
1981	119.45	122.08	218.33	223.36	70.91	80.90	116.00	139.92
1982	113.59	120.88	213.69	221.43	65.64	78.56	113.50	136.69
1983	118.61	122.17	221.20	224.13	57.18	77.62	103.85	135.20
1984	110.32	122.50	201.86	224.83	53.07	76.51	89.93	133.13
1985	99.82	121.06	184.26	222.73	52.96	75.19	93.57	131.50
1986	97.16	120.47	174.61	222.05	55.46	73.17	96.75	127.89
1987	113.31	121.68	207.61	224.02	61.71	72.24	104.15	126.28
1988	102.76	119.61	186.37	220.76	49.07	72.11	82.36	125.89
1989	102.56	121.14	188.51	224.06	53.91	71.41	93.43	124.70
1990	104.42	120.88	190.14	223.84	57.61	69.61	96.26	121.70
1991	97.57	118.75	180.94	220.44	58.45	70.08	103.01	123.42
1992	108.70	117.46	198.25	217.76	58.20	69.81	103.97	122.78
1993	102.62	115.46	186.84	214.80	64.26	68.52	114.12	121.61
1994	99.53	113.73	186.54	211.88	57.38	68.08	100.64	120.43
1995	94.21	115.95	174.70	215.42	63.03	69.43	106.57	123.21
1996	95.75	115.37	177.86	214.21	60.13	69.44	108.60	123.25
1997	94.60	110.36	175.12	205.91	63.44	69.13	111.22	123.08
1998	93.31	108.47	172.49	202.53	58.70	68.34	105.66	121.29
1999	83.80	105.49	157.59	196.73	63.26	67.56	111.89	120.41
2000	85.13	103.64	155.86	193.02	57.86	66.71	100.44	118.30
2001	86.40	100.78	161.00	187.91	65.58	65.98	117.91	118.00
2002	84.75	96.46	160.60	180.17	60.24	63.37	104.92	113.46
2003	79.60	94.19	148.44	176.44	59.52	62.02	104.74	110.97
2004	88.45	94.34	164.32	176.13	61.53	63.78	114.37	114.07
2005	85.11	91.58	159.30	171.15	58.33	62.24	104.38	111.16
2006	79.90	90.69	147.00	169.42	54.91	60.70	98.54	108.70
2007	76.79	89.03	143.16	166.46	53.12	59.91	92.94	107.37
2008	86.84	86.48	160.60	161.33	54.98	59.50	94.95	107.00
2009	82.48	83.44	156.30	155.87	54.26	57.44	91.70	102.81
2010	76.69	80.28	146.16	149.96	54.31	58.37	97.44	104.81
2011	78.42	78.94	144.62	147.12	54.68	58.33	98.83	104.82
2012	80.30	77.54	149.30	144.70	52.36	57.24	93.56	103.06

# がん

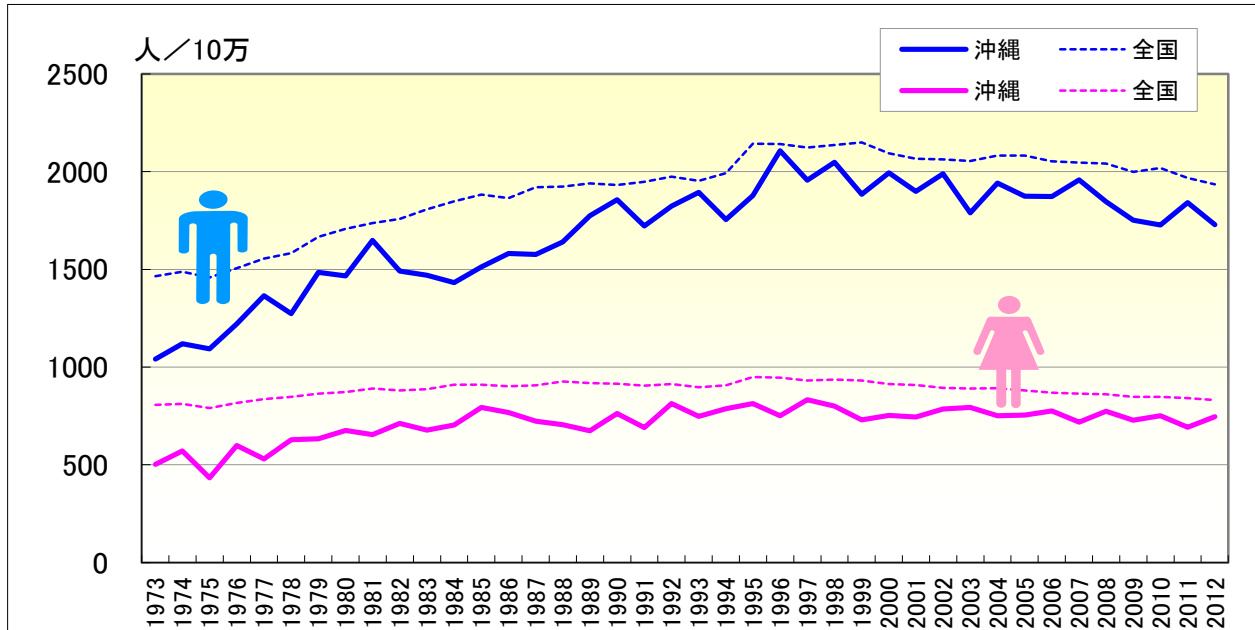
## ● 年齢調整死亡率（65-74歳）の年次推移（沖縄、全国：1973-2012）



	男性				女性			
	65-年齢調整死亡率		65-74年齢調整死亡率		65-年齢調整死亡率		65-74年齢調整死亡率	
	沖縄	全国	沖縄	全国	沖縄	全国	沖縄	全国
1973	939.11	1184.90	880.21	1022.82	392.16	634.51	328.11	534.73
1974	942.10	1193.91	838.95	1023.94	471.68	635.69	413.91	533.22
1975	942.21	1173.04	854.14	1007.85	395.82	619.33	373.76	519.79
1976	1013.54	1191.08	892.92	1008.18	445.96	627.07	357.69	517.02
1977	1103.15	1208.25	951.07	1007.37	381.92	627.67	295.64	507.12
1978	1072.27	1219.86	955.28	1009.06	473.29	635.66	383.50	512.73
1979	1100.80	1255.14	877.90	1016.38	478.36	638.81	388.37	507.95
1980	1194.44	1274.25	1037.01	1023.21	540.80	639.64	462.06	504.62
1981	1244.28	1285.71	1010.16	1024.68	466.11	637.69	357.28	491.60
1982	1106.26	1286.92	883.08	1013.47	493.59	631.20	367.14	486.29
1983	1111.59	1303.39	903.67	1011.00	469.10	629.31	348.45	479.55
1984	1048.58	1319.43	825.84	1012.98	491.80	634.09	369.36	474.41
1985	1154.08	1325.03	945.90	1002.13	465.30	627.96	274.79	464.48
1986	1199.51	1319.54	978.12	1003.42	514.48	619.21	367.51	455.64
1987	1131.79	1341.94	873.88	1007.16	463.17	616.84	312.48	448.68
1988	1135.82	1341.38	843.45	1003.59	471.18	621.30	335.27	444.34
1989	1176.53	1354.71	829.79	1015.11	443.28	615.81	309.50	440.25
1990	1230.85	1335.46	868.53	990.27	478.35	610.67	313.13	434.39
1991	1201.71	1349.30	900.09	1001.94	476.94	602.62	353.15	427.38
1992	1303.74	1367.42	1002.60	1015.38	526.24	602.69	359.50	422.20
1993	1271.77	1354.20	911.03	1007.02	476.24	591.92	318.91	415.08
1994	1253.67	1370.25	963.48	1010.06	485.74	595.20	310.78	414.18
1995	1370.69	1465.91	1076.94	1073.71	534.54	617.98	372.84	425.94
1996	1426.69	1466.30	1032.44	1074.63	496.06	613.09	348.47	420.41
1997	1271.69	1453.63	874.95	1065.95	502.12	601.82	310.44	411.17
1998	1324.16	1462.41	904.30	1071.81	507.32	601.93	337.06	408.19
1999	1260.44	1460.33	898.96	1061.36	486.33	601.23	344.62	409.97
2000	1340.49	1425.10	961.33	1037.54	494.24	589.70	344.61	402.30
2001	1283.76	1398.66	926.84	1011.96	460.02	584.72	295.08	397.14
2002	1316.20	1382.32	926.67	987.55	501.69	573.45	336.84	387.42
2003	1180.83	1364.01	827.71	963.71	492.07	565.23	317.16	377.13
2004	1256.92	1365.85	859.78	950.31	484.06	566.07	328.76	377.32
2005	1180.49	1341.40	778.72	912.24	503.56	557.59	358.51	370.80
2006	1186.52	1306.80	789.11	874.23	470.40	550.22	293.16	365.45
2007	1182.95	1296.96	733.98	862.71	483.39	544.61	347.35	358.98
2008	1163.92	1287.37	768.24	850.06	466.63	542.48	288.20	357.90
2009	1071.92	1252.52	677.74	819.58	450.17	534.26	289.07	352.30
2010	1060.76	1261.66	674.12	823.12	489.06	531.82	336.79	348.52
2011	1134.11	1241.44	723.79	820.19	440.86	528.40	295.03	347.34
2012	1069.22	1213.81	686.87	796.21	481.25	519.90	327.65	339.57

# がん

## ● 年齢調整死亡率（75歳以上）の年次推移（沖縄、全国：1973-2012）

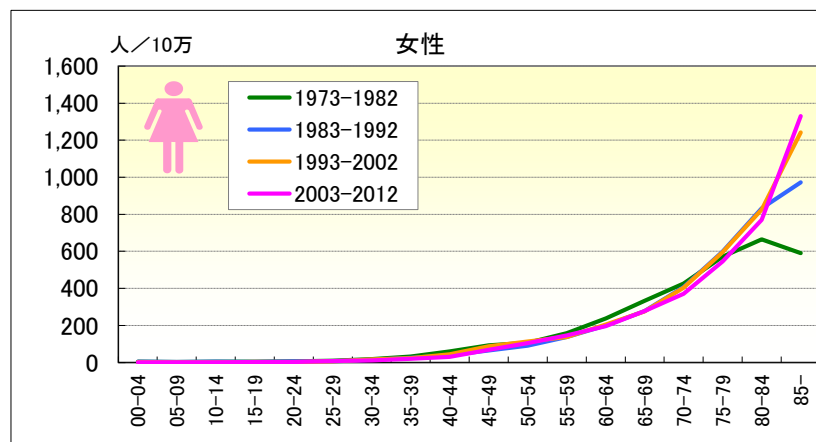
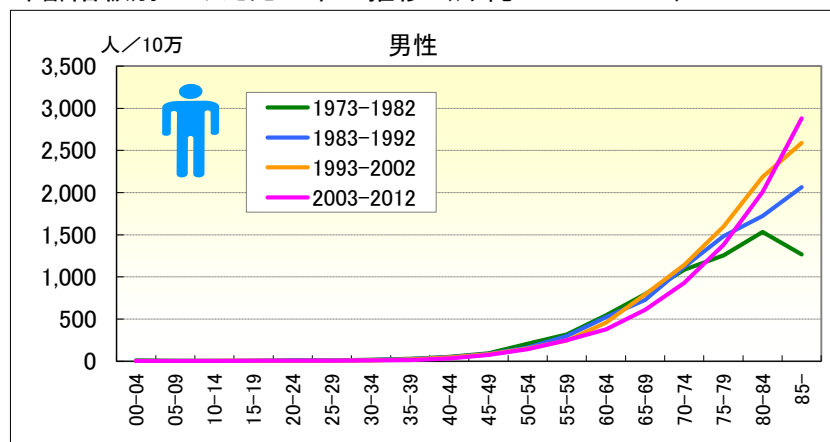


	男性				女性			
	65-年齢調整死亡率		75-年齢調整死亡率		65-年齢調整死亡率		75-年齢調整死亡率	
	沖縄	全国	沖縄	全国	沖縄	全国	沖縄	全国
1973	939.11	1184.90	1040.70	1464.43	392.16	634.51	502.64	806.61
1974	942.10	1193.91	1120.01	1487.06	471.68	635.69	571.31	812.44
1975	942.21	1173.04	1094.12	1457.95	395.82	619.33	433.87	791.01
1976	1013.54	1191.08	1221.57	1506.53	445.96	627.07	598.21	816.87
1977	1103.15	1208.25	1365.45	1554.70	381.92	627.67	530.73	835.57
1978	1072.27	1219.86	1274.04	1583.43	473.29	635.66	628.15	847.67
1979	1100.80	1255.14	1485.24	1666.93	478.36	638.81	633.57	864.50
1980	1194.44	1274.25	1465.97	1707.20	540.80	639.64	676.60	872.49
1981	1244.28	1285.71	1648.06	1735.91	466.11	637.69	653.81	889.64
1982	1106.26	1286.92	1491.18	1758.53	493.59	631.20	711.67	881.12
1983	1111.59	1303.39	1470.18	1807.66	469.10	629.31	677.17	887.62
1984	1048.58	1319.43	1432.73	1847.96	491.80	634.09	702.96	909.50
1985	1154.08	1325.03	1513.13	1881.91	465.30	627.96	793.87	909.91
1986	1199.51	1319.54	1581.36	1864.73	514.48	619.21	767.96	901.31
1987	1131.79	1341.94	1576.61	1919.33	463.17	616.84	723.07	906.85
1988	1135.82	1341.38	1640.07	1923.95	471.18	621.30	705.58	926.52
1989	1176.53	1354.71	1774.53	1940.42	443.28	615.81	674.00	918.59
1990	1230.85	1335.46	1855.73	1930.81	478.35	610.67	763.30	914.70
1991	1201.71	1349.30	1721.91	1948.39	476.94	602.62	690.44	904.85
1992	1303.74	1367.42	1823.12	1974.59	526.24	602.69	813.81	913.98
1993	1271.77	1354.20	1893.93	1952.97	476.24	591.92	747.59	896.91
1994	1253.67	1370.25	1754.16	1991.45	485.74	595.20	787.50	907.42
1995	1370.69	1465.91	1877.32	2142.34	534.54	617.98	813.41	949.19
1996	1426.69	1466.30	2106.63	2141.80	496.06	613.09	750.62	945.40
1997	1271.69	1453.63	1955.94	2122.25	502.12	601.82	832.70	930.63
1998	1324.16	1462.41	2048.27	2136.07	507.32	601.93	800.97	936.07
1999	1260.44	1460.33	1883.87	2148.42	486.33	601.23	730.73	931.09
2000	1340.49	1425.10	1994.42	2093.50	494.24	589.70	752.31	912.91
2001	1283.76	1398.66	1899.33	2065.60	460.02	584.72	744.49	908.25
2002	1316.20	1382.32	1988.01	2063.17	501.69	573.45	786.01	894.28
2003	1180.83	1364.01	1789.85	2054.40	492.07	565.23	793.74	889.63
2004	1256.92	1365.85	1941.84	2082.53	484.06	566.07	751.91	891.60
2005	1180.49	1341.40	1873.40	2081.58	503.56	557.59	753.72	879.73
2006	1186.52	1306.80	1871.93	2052.83	470.40	550.22	776.09	868.89
2007	1182.95	1296.96	1957.27	2045.91	483.39	544.61	718.03	864.75
2008	1163.92	1287.37	1846.33	2041.61	466.63	542.48	774.37	860.81
2009	1071.92	1252.52	1751.76	1999.20	450.17	534.26	728.02	848.09
2010	1060.76	1261.66	1727.59	2017.98	489.06	531.82	751.69	847.94
2011	1134.11	1241.44	1841.78	1967.96	440.86	528.40	692.39	840.68
2012	1069.22	1213.81	1728.64	1934.05	481.25	519.90	746.16	830.91



# がん

## ● 年齢階級別にみた死亡率の推移（沖縄：1973-2012）

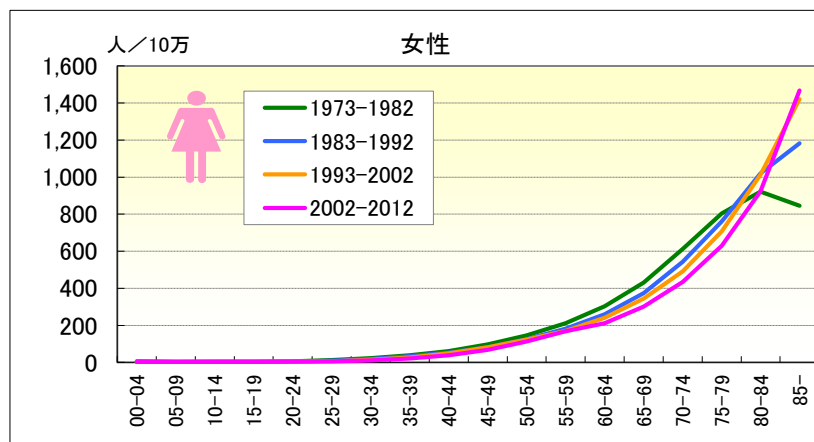
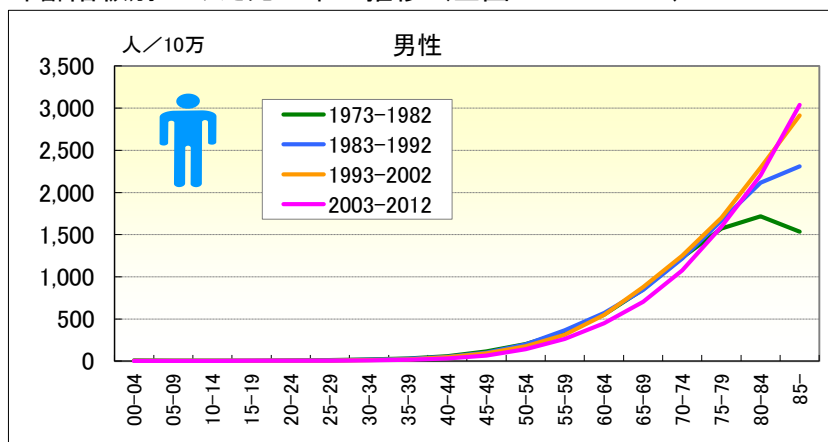


## ● 年齢階級別、性別\*期間別死亡率（沖縄：1973-2012年）

	総数	00-04	05-09	10-14	15-19	20-24	25-29	30-34	35-39	40-44	45-49	50-54	55-59	60-64	65-69	70-74	75-79	80-84	85-	
男	1973-1977	95.92	8.05	3.00	3.64	5.82	11.71	7.95	17.16	27.84	46.27	87.31	203.85	285.83	564.07	765.91	1,039.71	1,197.56	1,229.09	1,000.65
	1978-1982	118.12	8.61	5.55	3.31	8.67	7.32	11.60	15.83	26.81	53.50	99.98	208.31	343.87	528.80	820.03	1,123.85	1,303.75	1,794.39	1,456.44
	1973-1982	107.38	8.32	4.32	3.48	7.20	9.64	9.92	16.40	27.34	49.95	94.44	206.45	317.51	545.39	794.88	1,085.43	1,255.13	1,531.83	1,268.00
	1983-1987	125.80	3.12	2.56	3.84	5.28	8.10	10.29	13.78	22.80	45.26	85.83	177.30	291.18	546.16	744.33	1,115.58	1,374.70	1,573.06	1,865.96
	1988-1992	151.85	3.77	4.99	5.54	3.05	7.07	9.04	12.31	26.48	48.54	88.21	147.97	306.39	502.44	713.09	1,124.19	1,574.52	1,842.95	2,216.59
	1983-1992	139.04	3.43	3.75	4.66	4.13	7.59	9.71	13.08	24.76	47.08	86.99	162.21	299.72	520.95	727.24	1,120.20	1,483.63	1,724.18	2,063.44
	1993-1997	182.20	1.36	4.13	5.08	5.13	3.91	5.66	10.54	22.73	43.26	78.88	162.52	260.81	497.68	828.35	1,156.50	1,619.97	2,135.16	2,476.93
	1998-2002	205.26	2.81	3.11	3.30	5.33	3.66	4.62	9.00	16.55	47.15	82.68	142.25	230.56	423.43	765.00	1,133.38	1,579.17	2,226.27	2,672.61
	1993-2002	193.94	2.07	3.64	4.21	5.23	3.78	5.11	9.76	19.74	45.14	80.93	151.13	245.87	459.07	792.48	1,143.09	1,597.44	2,184.57	2,586.91
	2003-2007	222.00	0.96	1.84	4.44	3.05	4.35	5.70	10.07	13.09	32.94	80.94	156.10	238.47	358.29	615.45	1,032.84	1,420.79	2,182.94	2,825.21
2008-2012	243.16	1.95	3.36	2.32	5.63	5.25	5.23	5.98	12.95	29.87	69.65	124.74	260.52	394.85	606.38	834.37	1,349.07	1,881.00	2,928.13	
2003-2012	232.70	1.45	2.59	3.40	4.29	4.78	5.47	8.09	13.01	31.40	75.46	140.94	250.57	378.98	611.06	927.93	1,379.71	2,006.08	2,881.43	
女	1973-1977	74.00	5.85	2.72	6.36	4.82	6.86	11.01	21.77	31.64	71.24	104.15	121.08	172.45	265.77	312.41	405.97	572.29	501.76	440.81
	1978-1982	82.00	4.70	2.91	3.05	3.42	6.98	8.97	15.97	33.02	48.62	83.47	95.56	145.74	213.79	351.23	443.27	571.17	799.96	700.74
	1973-1982	78.12	5.30	2.82	4.72	4.14	6.92	9.91	18.51	32.31	59.57	93.14	107.09	158.05	237.96	333.11	425.90	571.67	663.90	590.08
	1983-1987	88.63	5.32	3.46	4.35	3.35	6.03	6.64	15.67	22.23	36.38	58.84	86.36	143.46	222.50	291.13	389.94	603.40	859.83	921.21
	1988-1992	99.66	4.84	2.02	3.46	3.51	4.87	6.10	14.78	26.85	40.63	72.57	96.68	132.44	182.02	266.98	422.72	596.29	809.36	1,009.49
	1983-1992	94.27	5.09	2.75	3.92	3.44	5.44	6.38	15.24	24.72	38.72	65.54	91.69	137.58	200.48	278.12	407.53	599.58	832.27	972.00
	1993-1997	119.79	3.82	2.61	1.63	3.27	3.02	5.92	16.83	25.55	46.91	89.75	106.21	140.54	206.28	275.45	406.30	635.56	852.64	1,144.05
	1998-2002	135.07	0.50	0.93	2.16	2.57	2.31	6.59	15.79	22.88	43.01	86.49	120.02	135.17	204.30	276.57	402.52	561.16	803.29	1,318.23
	1993-2002	127.56	2.19	1.80	1.89	2.93	2.68	6.27	16.30	24.24	45.00	87.99	113.79	137.92	205.26	276.05	404.24	595.35	825.99	1,241.49
	2003-2007	148.61	1.51	1.46	1.87	2.28	1.93	6.88	13.44	17.23	28.69	77.59	103.38	149.41	212.73	287.74	383.17	556.17	788.59	1,330.56
2008-2012	158.59	1.01	2.02	1.47	2.46	3.15	8.20	9.22	23.62	33.43	58.14	107.04	145.13	183.36	265.14	361.39	537.84	756.55	1,328.51	
2003-2012	153.66	1.26	1.74	1.67	2.36	2.51	7.52	11.39	20.62	31.10	68.06	105.18	147.06	196.51	276.95	371.74	546.31	770.90	1,329.45	

# がん

## ● 年齢階級別にみた死亡率の推移（全国：1973-2012）

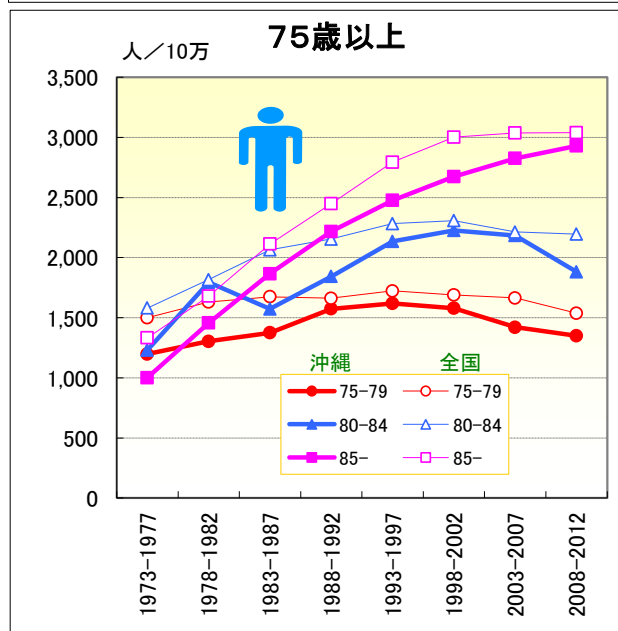
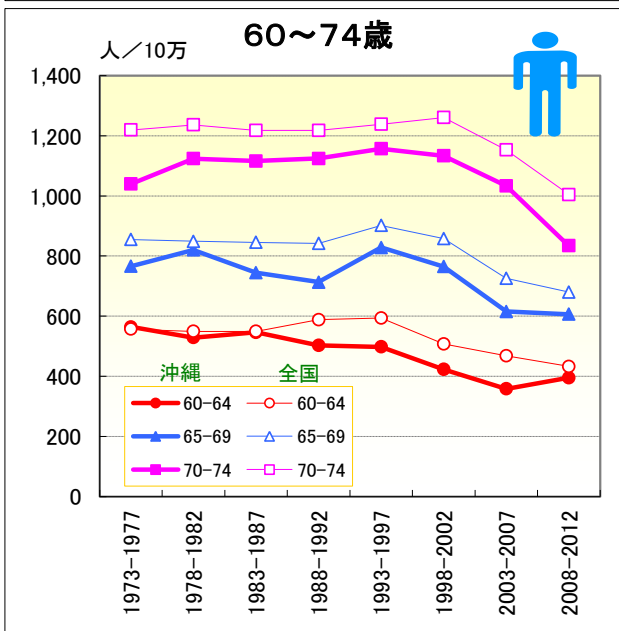
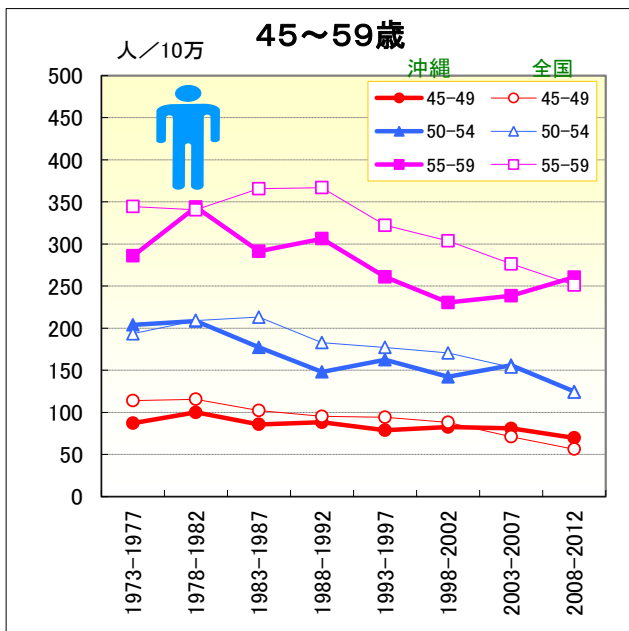
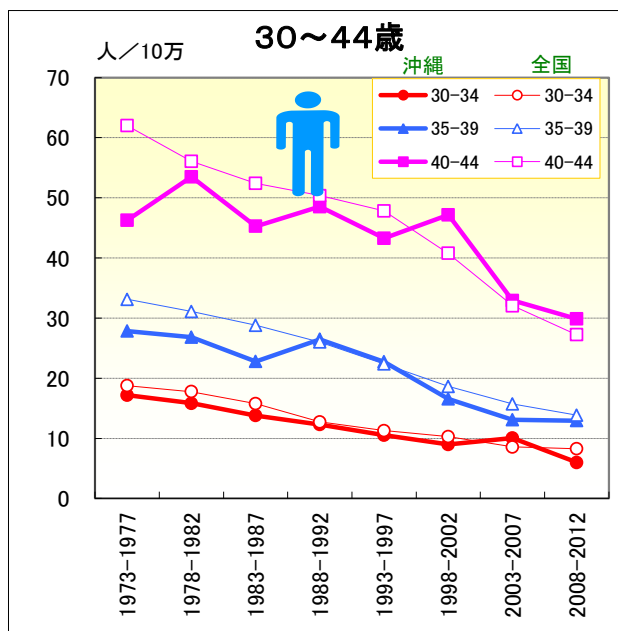
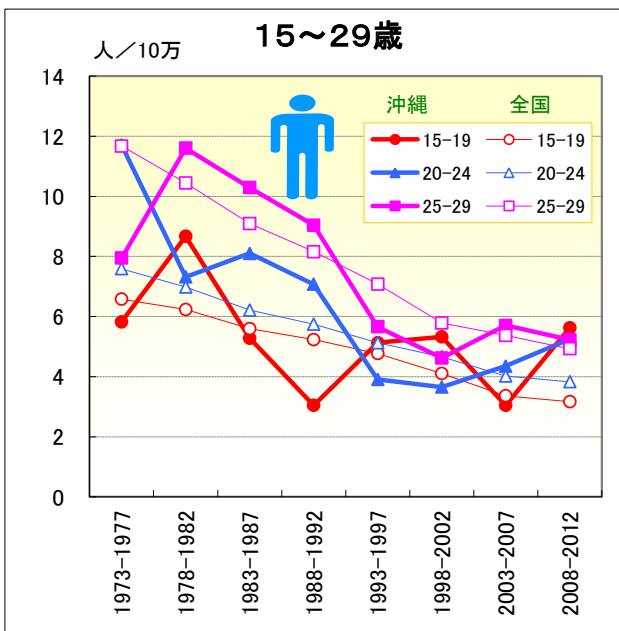
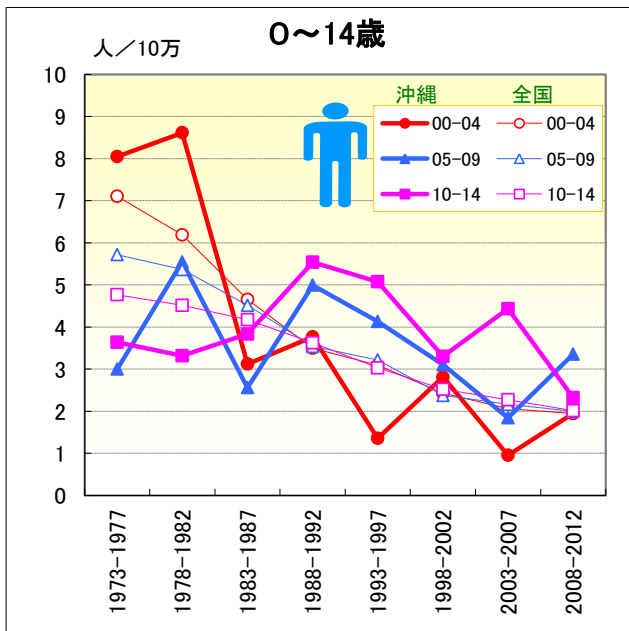


## ● 年齢階級別、性別\*期間別死亡率（全国：1973-2012年）

		総数	00-04	05-09	10-14	15-19	20-24	25-29	30-34	35-39	40-44	45-49	50-54	55-59	60-64	65-69	70-74	75-79	80-84	85-
男	1973-1977	142.64	7.11	5.72	4.77	6.58	7.59	11.67	18.77	33.11	62.00	114.11	193.39	344.47	557.10	855.18	1,219.31	1,500.37	1,581.37	1,332.44
	1978-1982	162.49	6.19	5.37	4.52	6.23	6.98	10.44	17.77	31.11	56.07	115.62	209.21	340.60	549.49	848.92	1,236.07	1,630.12	1,816.73	1,679.78
	1973-1982	152.81	6.68	5.54	4.63	6.40	7.30	11.10	18.23	32.08	58.99	114.91	202.42	342.33	553.27	851.88	1,228.31	1,571.74	1,717.06	1,535.97
	1983-1987	187.44	4.65	4.51	4.17	5.59	6.22	9.09	15.78	28.81	52.39	102.19	213.11	365.56	549.38	845.45	1,217.27	1,674.39	2,065.03	2,113.65
	1988-1992	216.89	3.50	3.54	3.63	5.23	5.75	8.16	12.74	26.02	50.36	95.35	182.76	367.02	588.06	842.20	1,217.92	1,662.12	2,154.16	2,448.72
	1983-1992	202.31	4.11	4.06	3.92	5.40	5.97	8.62	14.38	27.51	51.30	98.66	197.69	366.33	571.52	843.64	1,217.60	1,667.76	2,114.74	2,308.75
	1993-1997	256.10	3.09	3.21	3.03	4.77	5.13	7.08	11.28	22.38	47.81	94.32	177.26	322.26	593.65	901.77	1,238.19	1,723.21	2,281.81	2,793.21
	1998-2002	290.45	2.43	2.38	2.52	4.10	4.66	5.78	10.31	18.64	40.77	88.06	170.68	303.83	507.35	857.58	1,260.68	1,688.67	2,306.95	3,001.37
	1993-2002	273.35	2.76	2.81	2.79	4.46	4.91	6.40	10.77	20.49	44.55	91.41	173.71	312.72	549.45	878.35	1,251.11	1,703.69	2,295.03	2,912.91
	2003-2007	317.43	2.06	2.16	2.27	3.36	4.02	5.37	8.56	15.74	32.05	71.15	153.67	276.31	467.92	725.59	1,152.63	1,664.16	2,212.63	3,036.12
2008-2012	342.69	1.94	2.00	2.01	3.17	3.83	4.92	8.26	13.84	27.25	56.29	124.13	251.16	432.79	680.20	1,004.53	1,536.13	2,195.10	3,039.87	
2003-2012	330.04	2.00	2.08	2.14	3.27	3.93	5.16	8.42	14.75	29.52	63.63	139.97	264.58	448.90	701.96	1,075.76	1,595.43	2,202.48	3,038.25	
女	1973-1977	105.97	5.99	4.28	4.03	4.63	6.81	12.64	23.56	39.16	64.06	102.22	152.18	220.31	313.34	446.44	619.68	794.21	878.76	754.63
	1978-1982	115.23	4.89	3.82	3.68	4.52	5.78	11.69	21.64	36.31	57.71	91.61	140.10	203.44	293.49	418.78	605.83	812.35	954.34	912.43
	1973-1982	110.70	5.48	4.04	3.85	4.58	6.34	12.20	22.53	37.69	60.83	96.66	145.72	211.11	303.02	431.48	612.11	804.24	922.18	845.26
	1983-1987	125.50	3.95	3.14	3.28	3.87	5.08	9.21	18.87	32.69	53.86	83.66	128.99	186.95	269.91	388.82	561.80	779.04	1,009.29	1,101.52
	1988-1992	140.01	3.18	2.62	2.96	3.45	4.22	7.68	15.98	32.13	51.90	80.01	121.43	177.70	252.36	362.08	525.74	746.50	1,028.75	1,238.30
	1983-1992	132.83	3.59	2.90	3.13	3.65	4.63	8.44	17.54	32.43	52.81	81.78	125.14	182.11	260.49	374.18	542.88	761.09	1,020.33	1,182.33
	1993-1997	160.36	2.67	2.46	2.42	3.11	3.50	6.60	14.40	27.51	50.99	81.71	122.30	171.55	248.35	353.44	500.21	728.18	1,025.39	1,370.90
	1998-2002	181.54	1.99	1.80	2.03	2.71	3.53	6.17	12.77	25.71	46.48	80.18	122.96	169.05	233.15	337.30	483.18	690.78	1,004.09	1,457.17
	1993-2002	171.01	2.33	2.15	2.23	2.92	3.51	6.37	13.54	26.60	48.91	81.00	122.66	170.26	240.59	344.97	491.03	707.45	1,013.96	1,421.69
	2003-2007	199.45	2.02	1.57	1.82	2.33	3.27	5.32	11.44	22.89	39.74	70.18	118.34	170.67	211.02	306.05	452.56	647.50	942.99	1,480.99
2008-2012	218.26	2.02	1.65	1.67	2.01	2.71	4.86	10.37	20.82	37.26	63.90	104.78	163.50	212.03	296.82	416.71	613.50	906.31	1,457.95	
2002-2012	208.86	2.02	1.61	1.75	2.18	3.01	5.11	10.94	21.81	38.44	67.01	112.06	167.30	211.56	301.28	434.10	629.49	922.90	1,467.91	

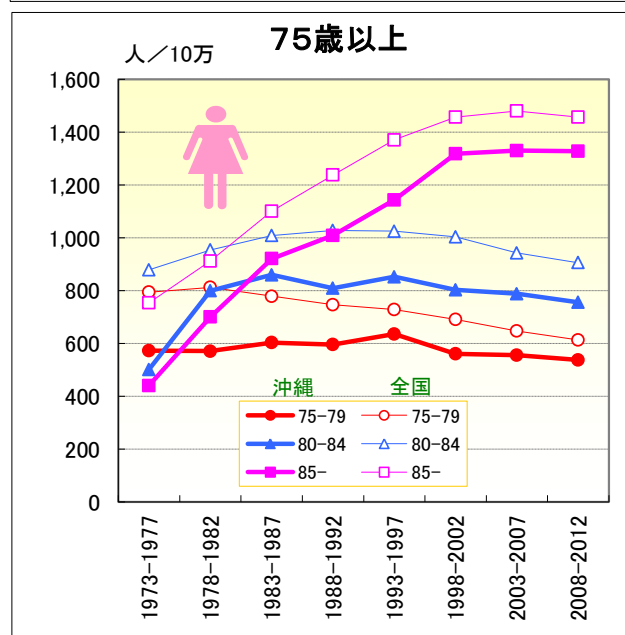
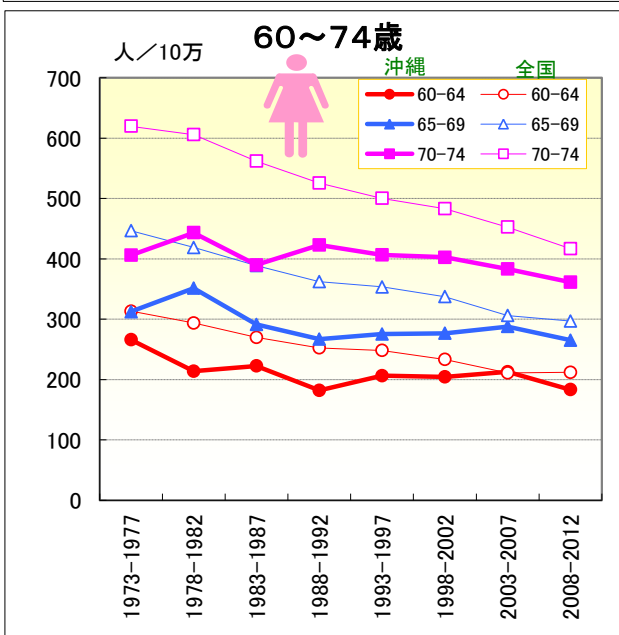
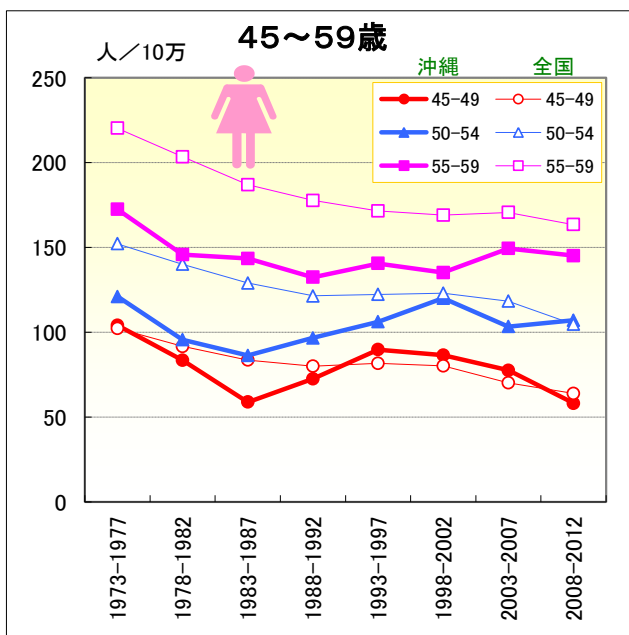
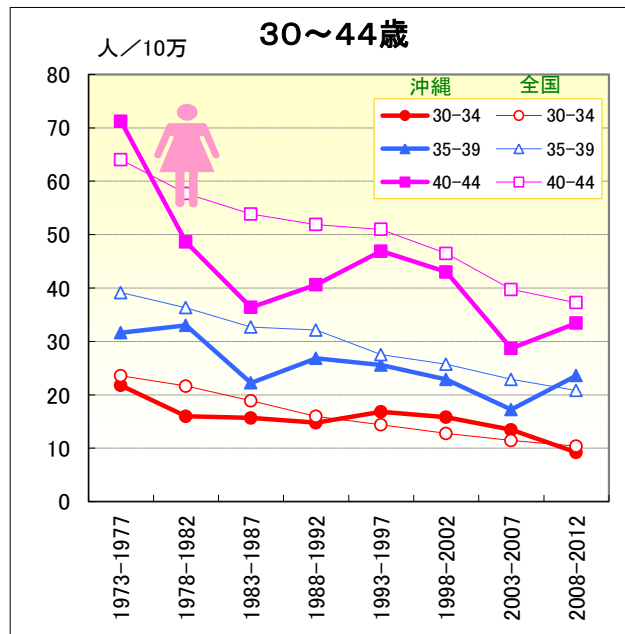
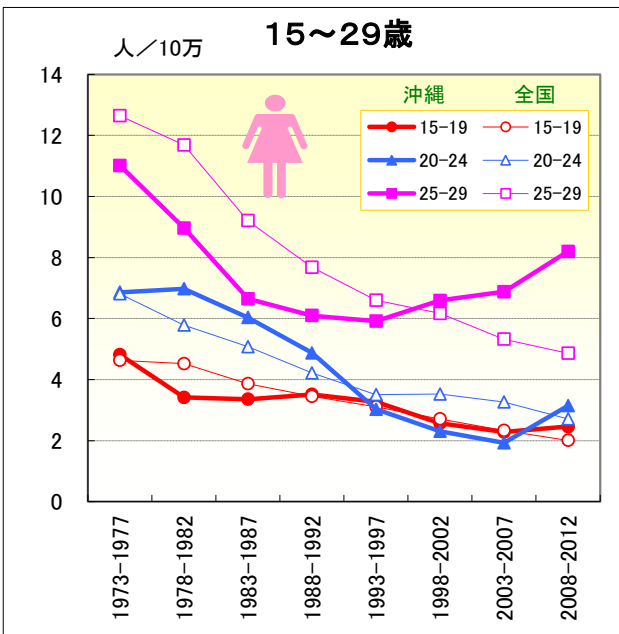
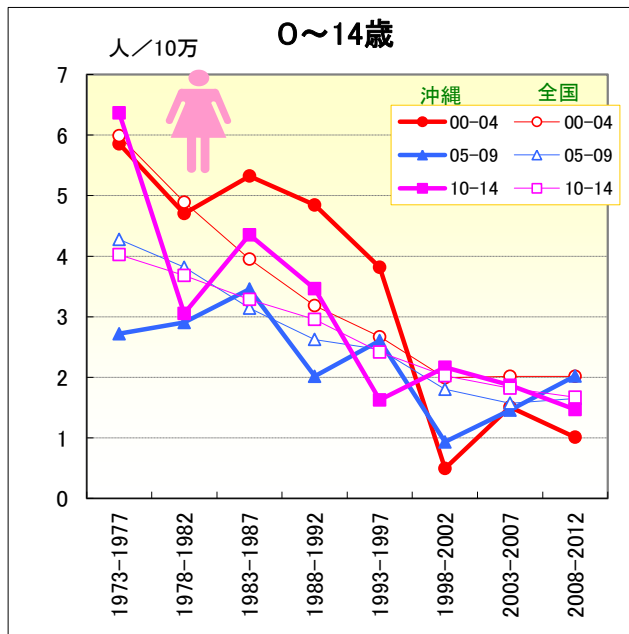
# がん

## ● 年齢階級別にみた死亡率の推移（沖縄・全国：男1973-2012）



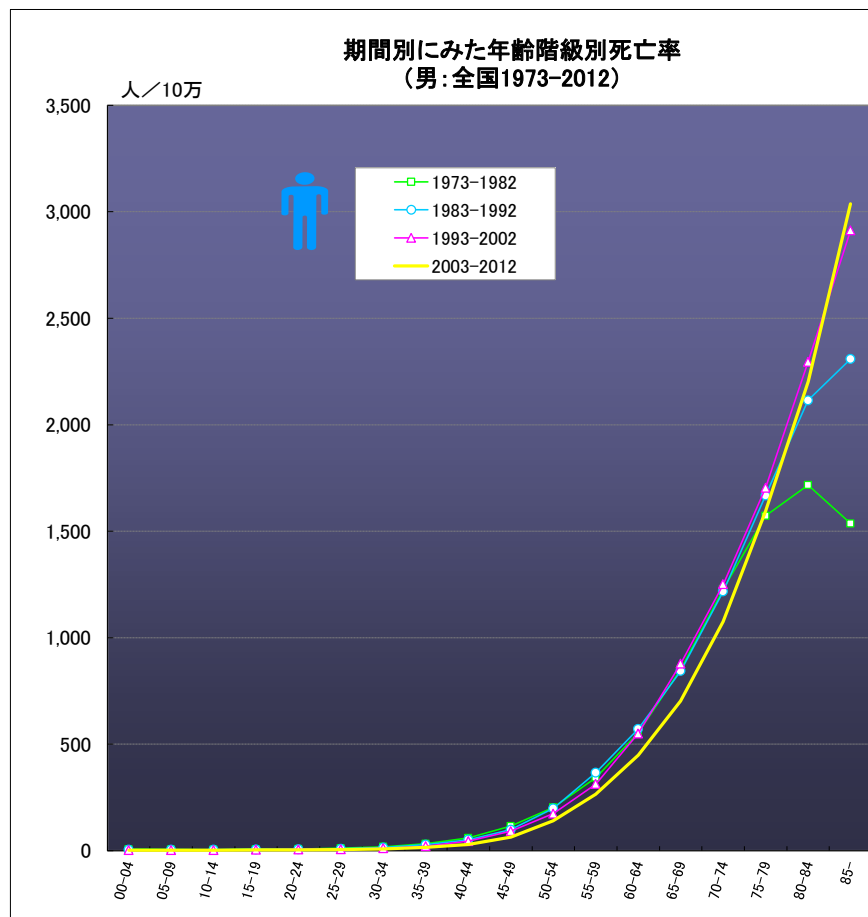
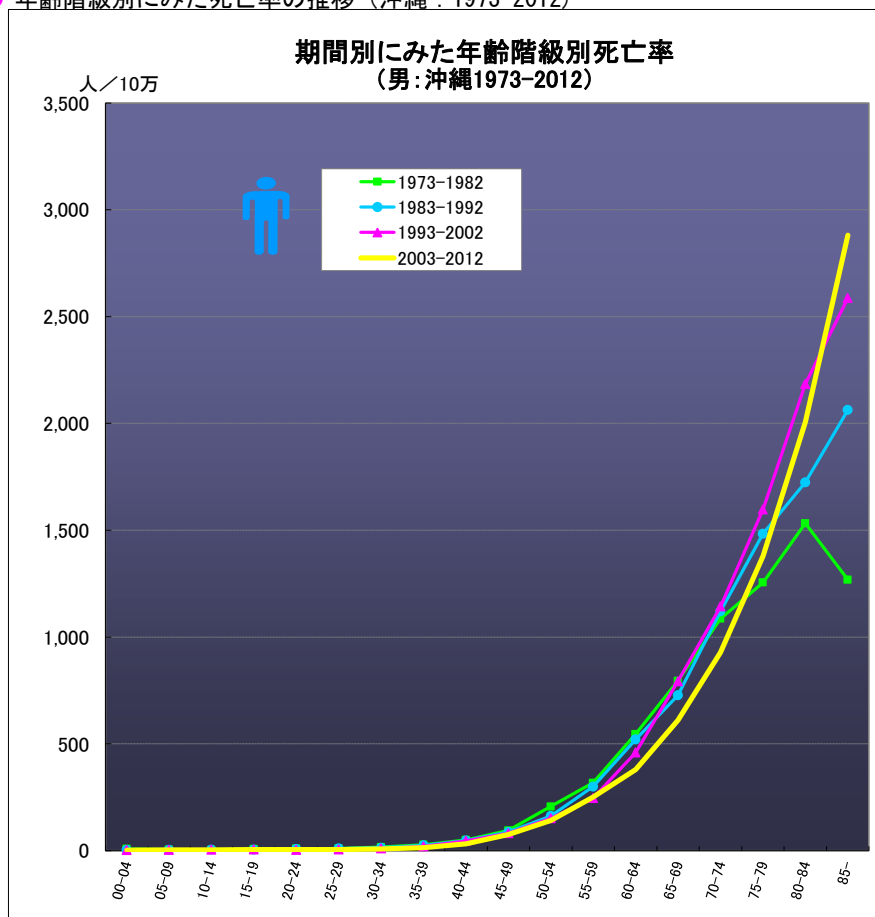
# がん

## ● 年齢階級別にみた死亡率の推移（沖縄・全国：女1973-2012）



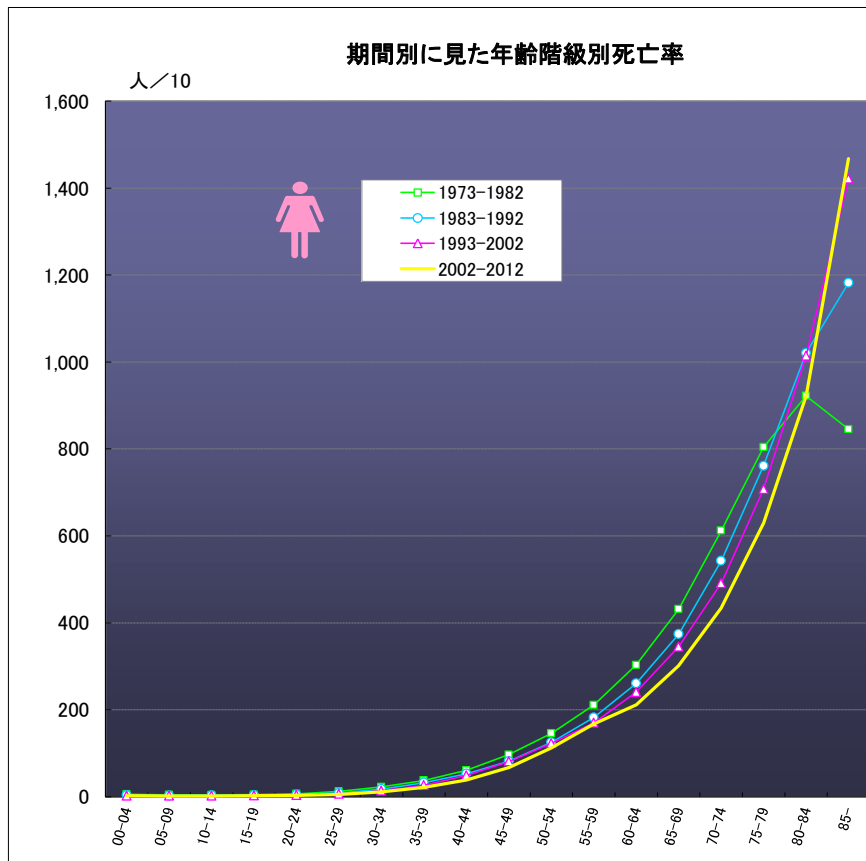
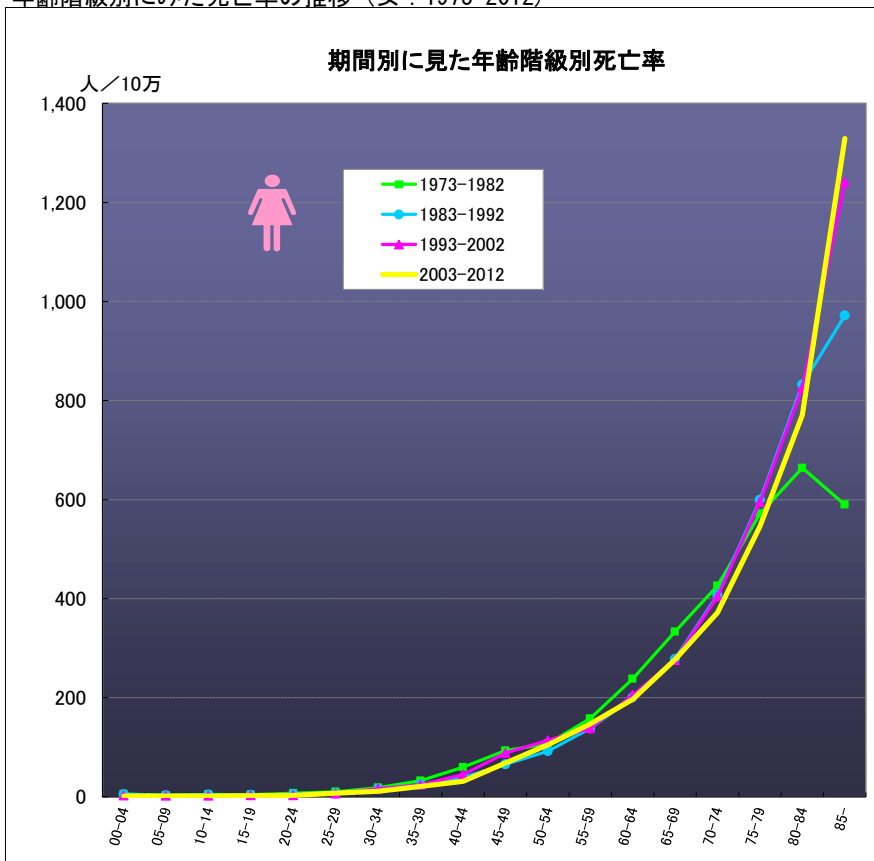
がん

● 年齢階級別にみた死亡率の推移（沖縄：1973-2012）



がん

● 年齢階級別にみた死亡率の推移（女：1973-2012）



がん

● 年齢階級別、性別\*期間別死亡率（沖縄：1973-2012年）

	総数	00-04	05-09	10-14	15-19	20-24	25-29	30-34	35-39	40-44	45-49	50-54	55-59	60-64	65-69	70-74	75-79	80-84	85-	
男	1973-1977	95.92	8.05	3.00	3.64	5.82	11.71	7.95	17.16	27.84	46.27	87.31	203.85	285.83	564.07	765.91	1039.71	1197.56	1229.09	1000.65
	1978-1982	118.12	8.61	5.55	3.31	8.67	7.32	11.60	15.83	26.81	53.50	99.98	208.31	343.87	528.80	820.03	1123.85	1303.75	1794.39	1456.44
	1973-1982	107.38	8.32	4.32	3.48	7.20	9.64	9.92	16.40	27.34	49.95	94.44	206.45	317.51	545.39	794.88	1085.43	1255.13	1531.83	1268.00
	1983-1987	125.80	3.12	2.56	3.84	5.28	8.10	10.29	13.78	22.80	45.26	85.83	177.30	291.18	546.16	744.33	1115.58	1374.70	1573.06	1865.96
	1988-1992	151.85	3.77	4.99	5.54	3.05	7.07	9.04	12.31	26.48	48.54	88.21	147.97	306.39	502.44	713.09	1124.19	1574.52	1842.95	2216.59
	1983-1992	139.04	3.43	3.75	4.66	4.13	7.59	9.71	13.08	24.76	47.08	86.99	162.21	299.72	520.95	727.24	1120.20	1483.63	1724.18	2063.44
	1993-1997	182.20	1.36	4.13	5.08	5.13	3.91	5.66	10.54	22.73	43.26	78.88	162.52	260.81	497.68	828.35	1156.50	1619.97	2135.16	2476.93
	1998-2002	205.26	2.81	3.11	3.30	5.33	3.66	4.62	9.00	16.55	47.15	82.68	142.25	230.56	423.43	765.00	1133.38	1579.17	2226.27	2672.61
	1993-2002	193.94	2.07	3.64	4.21	5.23	3.78	5.11	9.76	19.74	45.14	80.93	151.13	245.87	459.07	792.48	1143.09	1597.44	2184.57	2586.91
	2003-2007	222.00	0.96	1.84	4.44	3.05	4.35	5.70	10.07	13.09	32.94	80.94	156.10	238.47	358.29	615.45	1032.84	1420.79	2182.94	2825.21
	2008-2012	243.16	1.95	3.36	2.32	5.63	5.25	5.23	8.98	12.95	29.87	69.65	124.74	260.52	394.85	606.38	834.37	1349.07	1881.00	2928.13
	2003-2012	232.70	1.45	2.59	3.40	4.29	4.78	5.47	8.09	13.01	31.40	75.46	140.94	250.57	378.98	611.06	927.93	1379.71	2006.08	2881.43
	女	1973-1977	74.00	5.85	2.72	6.36	4.82	6.86	11.01	21.77	31.64	71.24	104.15	121.08	172.45	265.77	312.41	405.97	572.29	501.76
1978-1982		82.00	4.70	2.91	3.05	3.42	6.98	8.97	15.97	33.02	48.62	83.47	95.56	145.74	213.79	351.23	443.27	571.17	799.96	700.74
1973-1982		78.12	5.30	2.82	4.72	4.14	6.92	9.91	18.51	32.31	59.57	93.14	107.09	158.05	237.96	333.11	425.90	571.67	663.90	590.08
1983-1987		88.63	5.32	3.46	4.35	3.35	6.03	6.64	15.67	22.23	36.38	58.84	86.36	143.46	222.50	291.13	389.94	603.40	859.83	921.21
1988-1992		99.66	4.84	2.02	3.46	3.51	4.87	6.10	14.78	26.85	40.63	72.57	96.68	132.44	182.02	266.98	422.72	596.29	809.36	1009.49
1983-1992		94.27	5.09	2.75	3.92	3.44	5.44	6.38	15.24	24.72	38.72	65.54	91.69	137.58	200.48	278.12	407.53	599.58	832.27	972.00
1993-1997		119.79	3.82	2.61	1.63	3.27	3.02	5.92	16.83	25.55	46.91	89.75	106.21	140.54	206.28	275.45	406.30	635.56	852.64	1144.05
1998-2002		135.07	0.50	0.93	2.16	2.57	2.31	6.59	15.79	22.88	43.01	86.49	120.02	135.17	204.30	276.57	402.52	561.16	803.29	1318.23
1993-2002		127.56	2.19	1.80	1.89	2.93	2.68	6.27	16.30	24.24	45.00	87.99	113.79	137.92	205.26	276.05	404.24	595.35	825.99	1241.49
2003-2007		148.61	1.51	1.46	1.87	2.28	1.93	6.88	13.44	17.23	28.69	77.59	103.38	149.41	212.73	287.74	383.17	556.17	788.59	1330.56
2008-2012		158.59	1.01	2.02	1.47	2.46	3.15	8.20	9.22	23.62	33.43	58.14	107.04	145.13	183.36	265.14	361.39	537.84	756.55	1328.51
2003-2012		153.66	1.26	1.74	1.67	2.36	2.51	7.52	11.39	20.62	31.10	68.06	105.18	147.06	196.51	276.95	371.74	546.31	770.90	1329.45

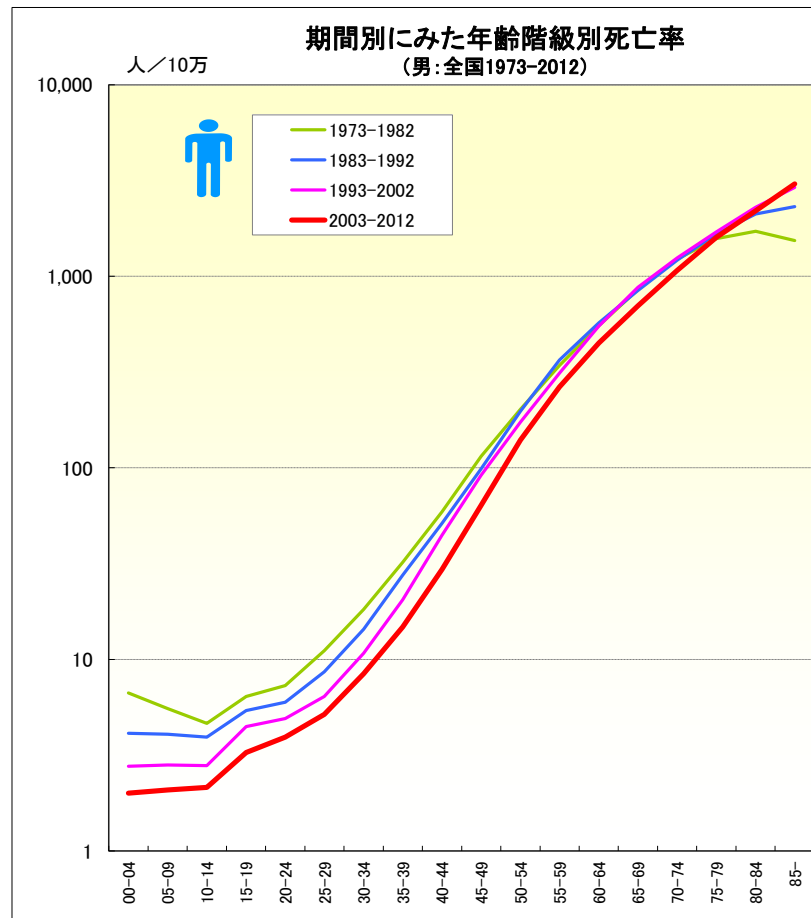
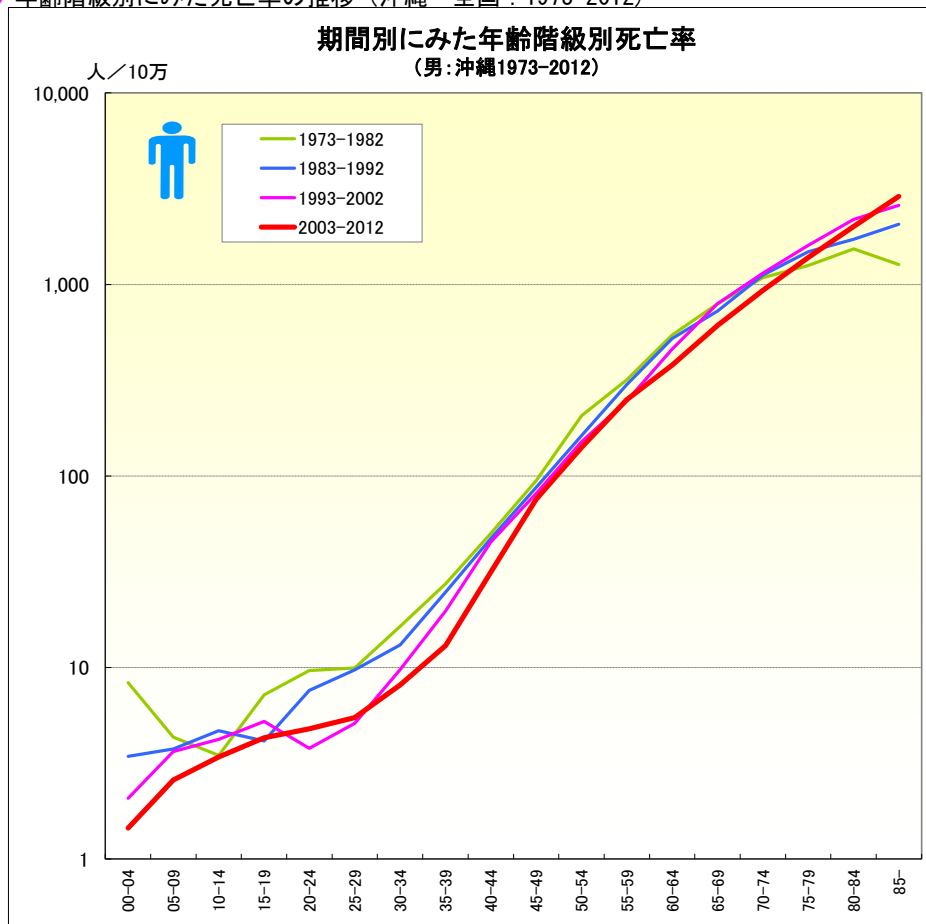
がん

● 年齢階級別、性別\*期間別死亡率（全国：1973-2012年）

	総数	00-04	05-09	10-14	15-19	20-24	25-29	30-34	35-39	40-44	45-49	50-54	55-59	60-64	65-69	70-74	75-79	80-84	85-	
男	1973-1977	142.64	7.11	5.72	4.77	6.58	7.59	11.67	18.77	33.11	62.00	114.11	193.39	344.47	557.10	855.18	1219.31	1500.37	1581.37	1332.44
	1978-1982	162.49	6.19	5.37	4.52	6.23	6.98	10.44	17.77	31.11	56.07	115.62	209.21	340.60	549.49	848.92	1236.07	1630.12	1816.73	1679.78
	1973-1982	152.81	6.68	5.54	4.63	6.40	7.30	11.10	18.23	32.08	58.99	114.91	202.42	342.33	553.27	851.88	1228.31	1571.74	1717.06	1535.97
	1983-1987	187.44	4.65	4.51	4.17	5.59	6.22	9.09	15.78	28.81	52.39	102.19	213.11	365.56	549.38	845.45	1217.27	1674.39	2065.03	2113.65
	1988-1992	216.89	3.50	3.54	3.63	5.23	5.75	8.16	12.74	26.02	50.36	95.35	182.76	367.02	588.06	842.20	1217.92	1662.12	2154.16	2448.72
	1983-1992	202.31	4.11	4.06	3.92	5.40	5.97	8.62	14.38	27.51	51.30	98.66	197.69	366.33	571.52	843.64	1217.60	1667.76	2114.74	2308.75
	1993-1997	256.10	3.09	3.21	3.03	4.77	5.13	7.08	11.28	22.38	47.81	94.32	177.26	322.26	593.65	901.77	1238.19	1723.21	2281.81	2793.21
	1998-2002	290.45	2.43	2.38	2.52	4.10	4.66	5.78	10.31	18.64	40.77	88.06	170.68	303.83	507.35	857.58	1260.68	1688.67	2306.95	3001.37
	1993-2002	273.35	2.76	2.81	2.79	4.46	4.91	6.40	10.77	20.49	44.55	91.41	173.71	312.72	549.45	878.35	1251.11	1703.69	2295.03	2912.91
	2003-2007	317.43	2.06	2.16	2.27	3.36	4.02	5.37	8.56	15.74	32.05	71.15	153.67	276.31	467.92	725.59	1152.63	1664.16	2212.63	3036.12
	2008-2012	342.69	1.94	2.00	2.01	3.17	3.83	4.92	8.26	13.84	27.25	56.29	124.13	251.16	432.79	680.20	1004.53	1536.13	2195.10	3039.87
	2003-2012	330.04	2.00	2.08	2.14	3.27	3.93	5.16	8.42	14.75	29.52	63.63	139.97	264.58	448.90	701.96	1075.76	1595.43	2202.48	3038.25
	女	1973-1977	105.97	5.99	4.28	4.03	4.63	6.81	12.64	23.56	39.16	64.06	102.22	152.18	220.31	313.34	446.44	619.68	794.21	878.76
1978-1982		115.23	4.89	3.82	3.68	4.52	5.78	11.69	21.64	36.31	57.71	91.61	140.10	203.44	293.49	418.78	605.83	812.35	954.34	912.43
1973-1982		110.70	5.48	4.04	3.85	4.58	6.34	12.20	22.53	37.69	60.83	96.66	145.72	211.11	303.02	431.48	612.11	804.24	922.18	845.26
1983-1987		125.50	3.95	3.14	3.28	3.87	5.08	9.21	18.87	32.69	53.86	83.66	128.99	186.95	269.91	388.82	561.80	779.04	1009.29	1101.52
1988-1992		140.01	3.18	2.62	2.96	3.45	4.22	7.68	15.98	32.13	51.90	80.01	121.43	177.70	252.36	362.08	525.74	746.50	1028.75	1238.30
1983-1992		132.83	3.59	2.90	3.13	3.65	4.63	8.44	17.54	32.43	52.81	81.78	125.14	182.11	260.49	374.18	542.88	761.09	1020.33	1182.33
1993-1997		160.36	2.67	2.46	2.42	3.11	3.50	6.60	14.40	27.51	50.99	81.71	122.30	171.55	248.35	353.44	500.21	728.18	1025.39	1370.90
1998-2002		181.54	1.99	1.80	2.03	2.71	3.53	6.17	12.77	25.71	46.48	80.18	122.96	169.05	233.15	337.30	483.18	690.78	1004.09	1457.17
1993-2002		171.01	2.33	2.15	2.23	2.92	3.51	6.37	13.54	26.60	48.91	81.00	122.66	170.26	240.59	344.97	491.03	707.45	1013.96	1421.69
2003-2007		199.45	2.02	1.57	1.82	2.33	3.27	5.32	11.44	22.89	39.74	70.18	118.34	170.67	211.02	306.05	452.56	647.50	942.99	1480.99
2008-2012		218.26	2.02	1.65	1.67	2.01	2.71	4.86	10.37	20.82	37.26	63.90	104.78	163.50	212.03	296.82	416.71	613.50	906.31	1457.95
2003-2012		208.86	2.02	1.61	1.75	2.18	3.01	5.11	10.94	21.81	38.44	67.01	112.06	167.30	211.56	301.28	434.10	629.49	922.90	1467.91

がん

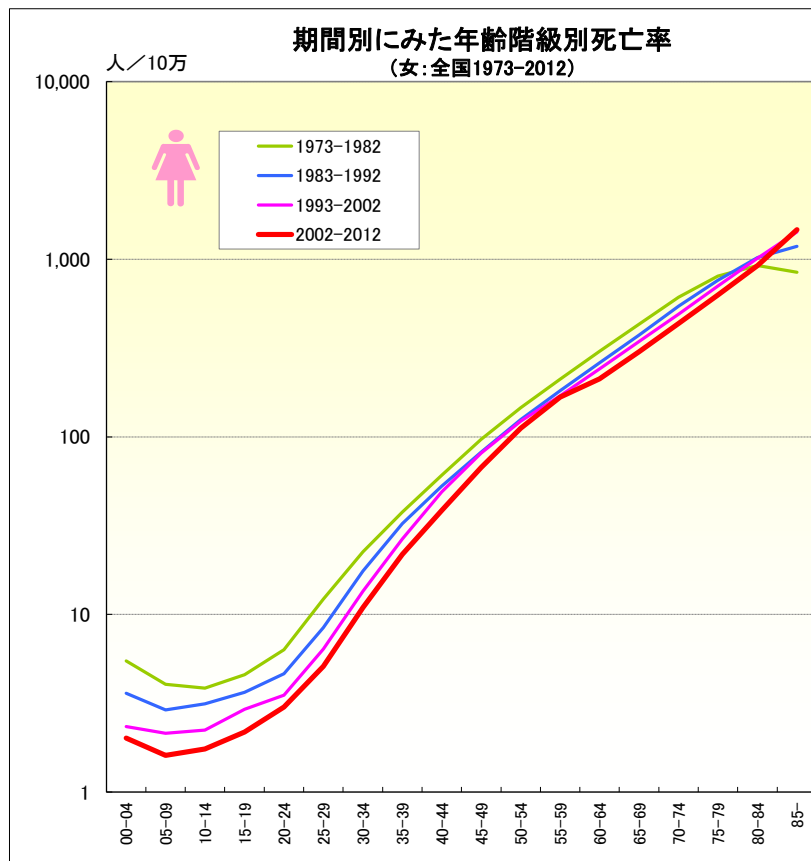
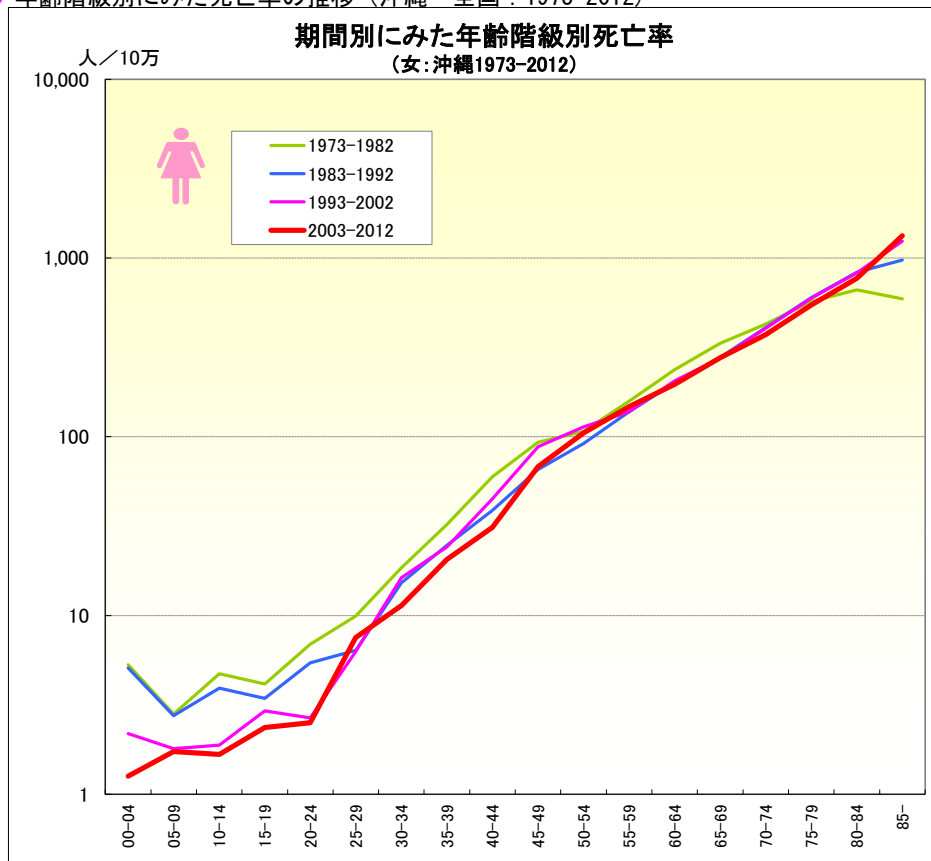
● 年齢階級別にみた死亡率の推移（沖縄・全国：1973-2012）





がん

● 年齢階級別にみた死亡率の推移（沖縄・全国：1973-2012）



● 年齢階級別、性別\*期間別死亡率（沖繩：1973-2012年）

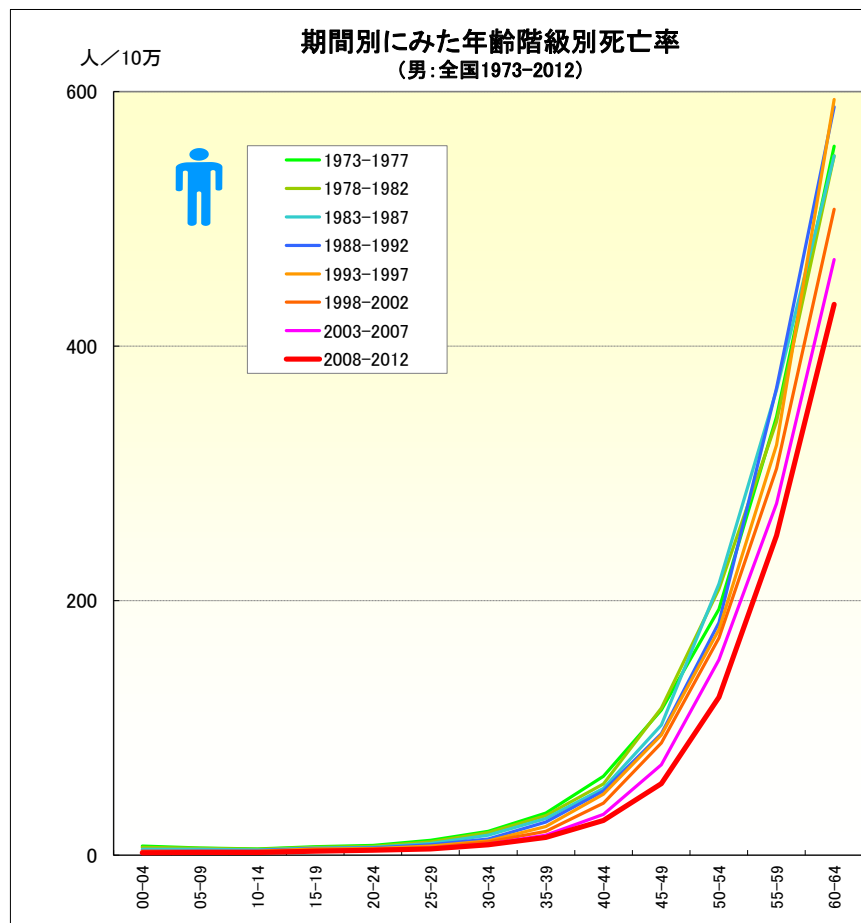
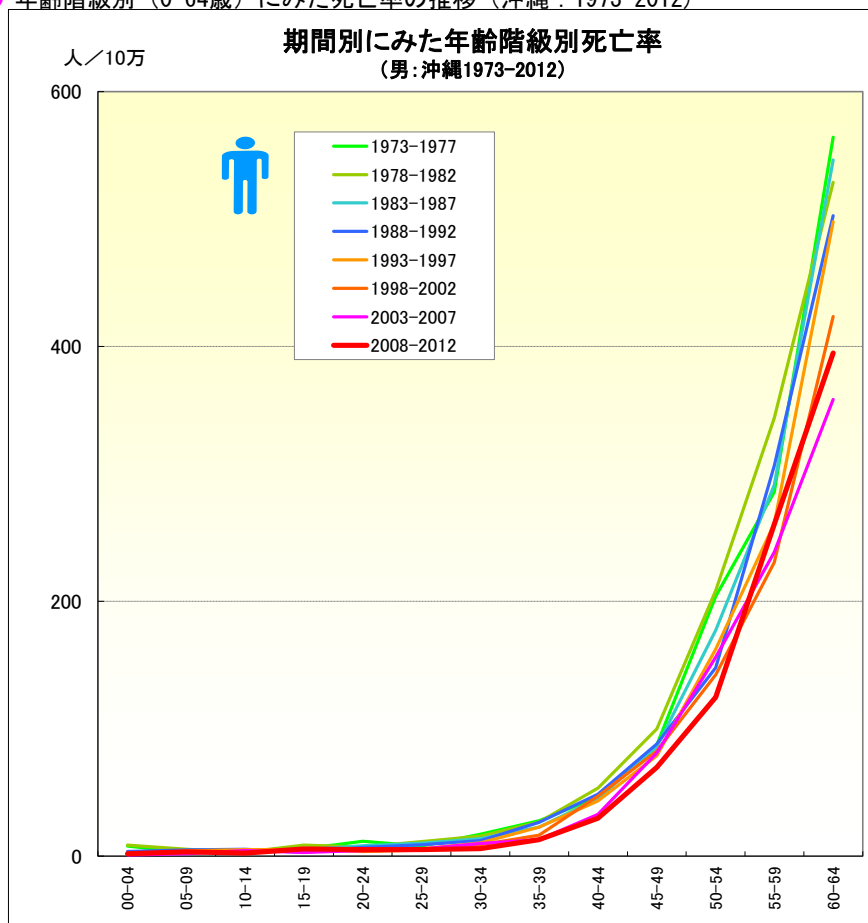
	● 年齢階級別、性別*期間別死亡率（沖繩：1973-2012年）																			
	総数	00-04	05-09	10-14	15-19	20-24	25-29	30-34	35-39	40-44	45-49	50-54	55-59	60-64	65-69	70-74	75-79	80-84	85-	
男	1973-1977	95.92	8.05	3.00	3.64	5.82	11.71	7.95	17.16	27.84	46.27	87.31	203.85	285.83	564.07	765.91	1039.71	1197.56	1229.09	1000.65
	1978-1982	118.12	8.61	5.55	3.31	8.67	7.32	11.60	15.83	26.81	53.50	99.98	208.31	343.87	528.80	820.03	1123.85	1303.75	1794.39	1456.44
	1973-1982	107.38	8.32	4.32	3.48	7.20	9.64	9.92	16.40	27.34	49.95	94.44	206.45	317.51	545.39	794.88	1085.43	1255.13	1531.83	1268.00
	1983-1987	125.80	3.12	2.56	3.84	5.28	8.10	10.29	13.78	22.80	45.26	85.83	177.30	291.18	546.16	744.33	1115.58	1374.70	1573.06	1865.96
	1988-1992	151.85	3.77	4.99	5.54	3.05	7.07	9.04	12.31	26.48	48.54	88.21	147.97	306.39	502.44	713.09	1124.19	1574.52	1842.95	2216.59
	1983-1992	139.04	3.43	3.75	4.66	4.13	7.59	9.71	13.08	24.76	47.08	86.99	162.21	299.72	520.95	727.24	1120.20	1483.63	1724.18	2063.44
	1993-1997	182.20	1.36	4.13	5.08	5.13	3.91	5.66	10.54	22.73	43.26	78.88	162.52	260.81	497.68	828.35	1156.50	1619.97	2135.16	2476.93
	1998-2002	205.26	2.81	3.11	3.30	5.33	3.66	4.62	9.00	16.55	47.15	82.68	142.25	230.56	423.43	765.00	1133.38	1579.17	2226.27	2672.61
	1993-2002	193.94	2.07	3.64	4.21	5.23	3.78	5.11	9.76	19.74	45.14	80.93	151.13	245.87	459.07	792.48	1143.09	1597.44	2184.57	2586.91
	2003-2007	222.00	0.96	1.84	4.44	3.05	4.35	5.70	10.07	13.09	32.94	80.94	156.10	238.47	358.29	615.45	1032.84	1420.79	2182.94	2825.21
	2008-2012	243.16	1.95	3.36	2.32	5.63	5.25	5.23	8.98	12.95	29.87	69.65	124.74	260.52	394.85	606.38	834.37	1349.07	1881.00	2928.13
	2003-2012	232.70	1.45	2.59	3.40	4.29	4.78	5.47	8.09	13.01	31.40	75.46	140.94	250.57	378.98	611.06	927.93	1379.71	2006.08	2881.43
女	1973-1977	74.00	5.85	2.72	6.36	4.82	6.86	11.01	21.77	31.64	71.24	104.15	121.08	172.45	265.77	312.41	405.97	572.29	501.76	440.81
	1978-1982	82.00	4.70	2.91	3.05	3.42	6.98	8.97	15.97	33.02	48.62	83.47	95.56	145.74	213.79	351.23	443.27	571.17	799.96	700.74
	1973-1982	78.12	5.30	2.82	4.72	4.14	6.92	9.91	18.51	32.31	59.57	93.14	107.09	158.05	237.96	333.11	425.90	571.67	663.90	590.08
	1983-1987	88.63	5.32	3.46	4.35	3.35	6.03	6.64	15.67	22.23	36.38	58.84	86.36	143.46	222.50	291.13	389.94	603.40	859.83	921.21
	1988-1992	99.66	4.84	2.02	3.46	3.51	4.87	6.10	14.78	26.85	40.63	72.57	96.68	132.44	182.02	266.98	422.72	596.29	809.36	1009.49
	1983-1992	94.27	5.09	2.75	3.92	3.44	5.44	6.38	15.24	24.72	38.72	65.54	91.69	137.58	200.48	278.12	407.53	599.58	832.27	972.00
	1993-1997	119.79	3.82	2.61	1.63	3.27	3.02	5.92	16.83	25.55	46.91	89.75	106.21	140.54	206.28	275.45	406.30	635.56	852.64	1144.05
	1998-2002	135.07	0.50	0.93	2.16	2.57	2.31	6.59	15.79	22.88	43.01	86.49	120.02	135.17	204.30	276.57	402.52	561.16	803.29	1318.23
	1993-2002	127.56	2.19	1.80	1.89	2.93	2.68	6.27	16.30	24.24	45.00	87.99	113.79	137.92	205.26	276.05	404.24	595.35	825.99	1241.49
	2003-2007	148.61	1.51	1.46	1.87	2.28	1.93	6.88	13.44	17.23	28.69	77.59	103.38	149.41	212.73	287.74	383.17	556.17	788.59	1330.56
	2008-2012	158.59	1.01	2.02	1.47	2.46	3.15	8.20	9.22	23.62	33.43	58.14	107.04	145.13	183.36	265.14	361.39	537.84	756.55	1328.51
	2003-2012	153.66	1.26	1.74	1.67	2.36	2.51	7.52	11.39	20.62	31.10	68.06	105.18	147.06	196.51	276.95	371.74	546.31	770.90	1329.45

● 年齢階級別、性別\*期間別死亡率（全国：1973-2011年）

	● 年齢階級別、性別*期間別死亡率（全国：1973-2011年）																			
	総数	00-04	05-09	10-14	15-19	20-24	25-29	30-34	35-39	40-44	45-49	50-54	55-59	60-64	65-69	70-74	75-79	80-84	85-	
男	1973-1977	142.64	7.11	5.72	4.77	6.58	7.59	11.67	18.77	33.11	62.00	114.11	193.39	344.47	557.10	855.18	1219.31	1500.37	1581.37	1332.44
	1978-1982	162.49	6.19	5.37	4.52	6.23	6.98	10.44	17.77	31.11	56.07	115.62	209.21	340.60	549.49	848.92	1236.07	1630.12	1816.73	1679.78
	1973-1982	152.81	6.68	5.54	4.63	6.40	7.30	11.10	18.23	32.08	58.99	114.91	202.42	342.33	553.27	851.88	1228.31	1571.74	1717.06	1535.97
	1983-1987	187.44	4.65	4.51	4.17	5.59	6.22	9.09	15.78	28.81	52.39	102.19	213.11	365.56	549.38	845.45	1217.27	1674.39	2065.03	2113.65
	1988-1992	216.89	3.50	3.54	3.63	5.23	5.75	8.16	12.74	26.02	50.36	95.35	182.76	367.02	588.06	842.20	1217.92	1662.12	2154.16	2448.72
	1983-1992	202.31	4.11	4.06	3.92	5.40	5.97	8.62	14.38	27.51	51.30	98.66	197.69	366.33	571.52	843.64	1217.60	1667.76	2114.74	2308.75
	1993-1997	256.10	3.09	3.21	3.03	4.77	5.13	7.08	11.28	22.38	47.81	94.32	177.26	322.26	593.65	901.77	1238.19	1723.21	2281.81	2793.21
	1998-2002	290.45	2.43	2.38	2.52	4.10	4.66	5.78	10.31	18.64	40.77	88.06	170.68	303.83	507.35	857.58	1260.68	1688.67	2306.95	3001.37
	1993-2002	273.35	2.76	2.81	2.79	4.46	4.91	6.40	10.77	20.49	44.55	91.41	173.71	312.72	549.45	878.35	1251.11	1703.69	2295.03	2912.91
	2003-2007	317.43	2.06	2.16	2.27	3.36	4.02	5.37	8.56	15.74	32.05	71.15	153.67	276.31	467.92	725.59	1152.63	1664.16	2212.63	3036.12
	2008-2012	342.69	1.94	2.00	2.01	3.17	3.83	4.92	8.26	13.84	27.25	56.29	124.13	251.16	432.79	680.20	1004.53	1536.13	2195.10	3039.87
	2003-2012	330.04	2.00	2.08	2.14	3.27	3.93	5.16	8.42	14.75	29.52	63.63	139.97	264.58	448.90	701.96	1075.76	1595.43	2202.48	3038.25
女	1973-1977	105.97	5.99	4.28	4.03	4.63	6.81	12.64	23.56	39.16	64.06	102.22	152.18	220.31	313.34	446.44	619.68	794.21	878.76	754.63
	1978-1982	115.23	4.89	3.82	3.68	4.52	5.78	11.69	21.64	36.31	57.71	91.61	140.10	203.44	293.49	418.78	605.83	812.35	954.34	912.43
	1973-1982	110.70	5.48	4.04	3.85	4.58	6.34	12.20	22.53	37.69	60.83	96.66	145.72	211.11	303.02	431.48	612.11	804.24	922.18	845.26
	1983-1987	125.50	3.95	3.14	3.28	3.87	5.08	9.21	18.87	32.69	53.86	83.66	128.99	186.95	269.91	388.82	561.80	779.04	1009.29	1101.52
	1988-1992	140.01	3.18	2.62	2.96	3.45	4.22	7.68	15.98	32.13	51.90	80.01	121.43	177.70	252.36	362.08	525.74	746.50	1028.75	1238.30
	1983-1992	132.83	3.59	2.90	3.13	3.65	4.63	8.44	17.54	32.43	52.81	81.78	125.14	182.11	260.49	374.18	542.88	761.09	1020.33	1182.33
	1993-1997	160.36	2.67	2.46	2.42	3.11	3.50	6.60	14.40	27.51	50.99	81.71	122.30	171.55	248.35	353.44	500.21	728.18	1025.39	1370.90
	1998-2002	181.54	1.99	1.80	2.03	2.71	3.53	6.17	12.77	25.71	46.48	80.18	122.96	169.05	233.15	337.30	483.18	690.78	1004.09	1457.17
	1993-2002	171.01	2.33	2.15	2.23	2.92	3.51	6.37	13.54	26.60	48.91	81.00	122.66	170.26	240.59	344.97	491.03	707.45	1013.96	1421.69
	2003-2007	199.45	2.02	1.57	1.82	2.33	3.27	5.32	11.44	22.89	39.74	70.18	118.34	170.67	211.02	306.05	452.56	647.50	942.99	1480.99
	2008-2012	218.26	2.02	1.65	1.67	2.01	2.71	4.86	10.37	20.82	37.26	63.90	104.78	163.50	212.03	296.82	416.71	613.50	906.31	1457.95
	2003-2012	208.86	2.02	1.61	1.75	2.18	3.01	5.11	10.94	21.81	38.44	67.01	112.06	167.30	211.56	301.28	434.10	629.49	922.90	1467.91

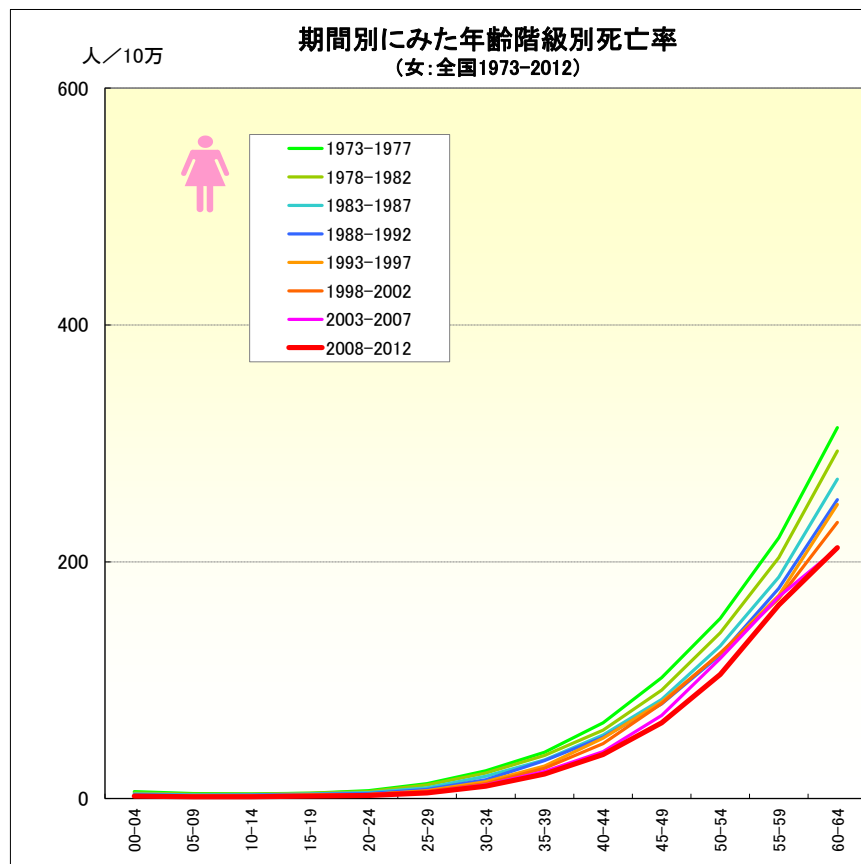
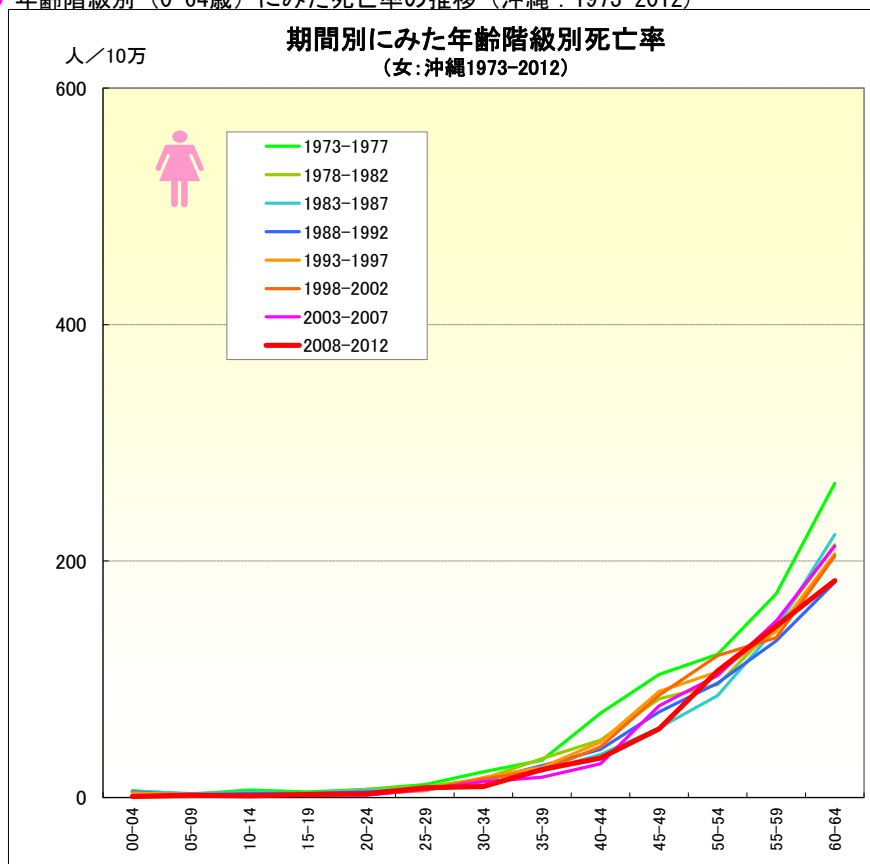
# がん

● 年齢階級別（0-64歳）にみた死亡率の推移（沖縄：1973-2012）



# がん

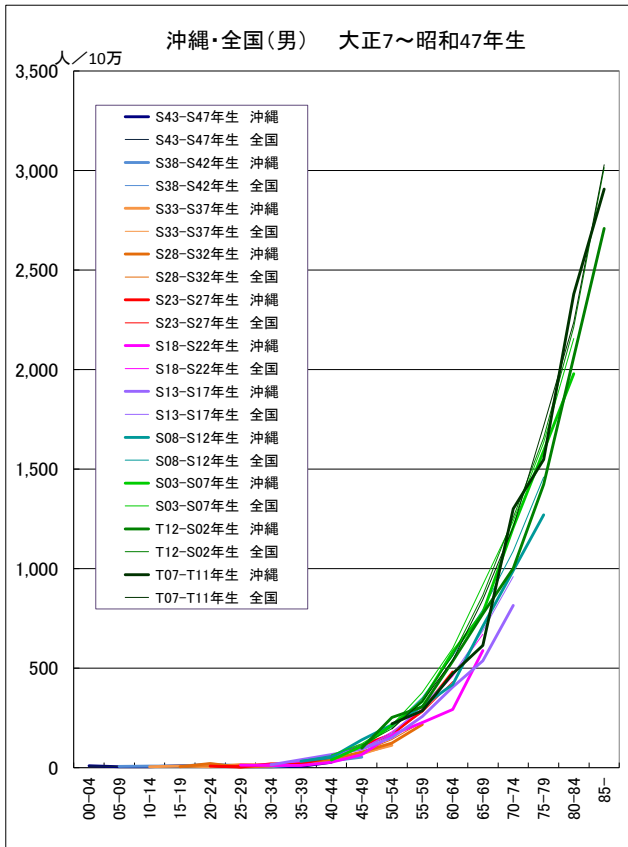
● 年齢階級別（0-64歳）にみた死亡率の推移（沖縄：1973-2012）



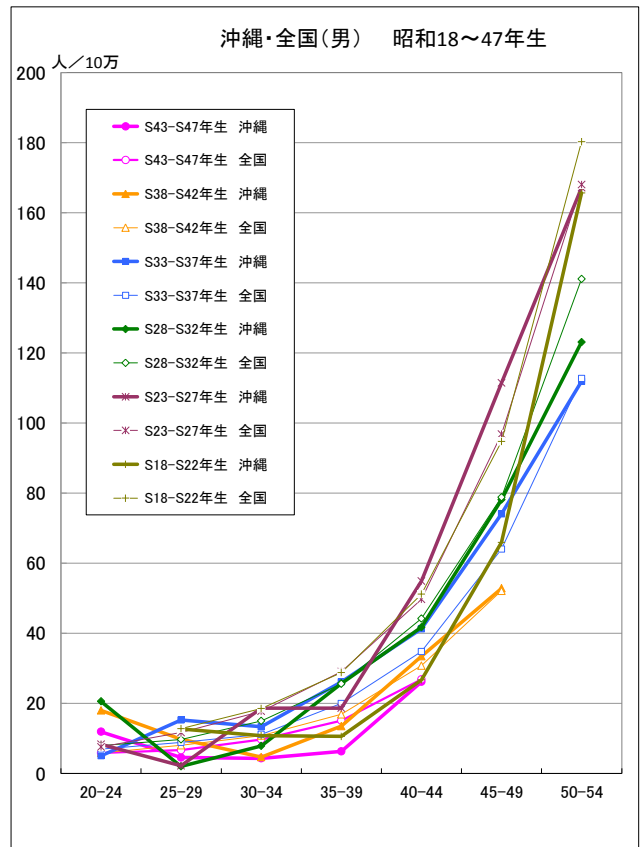


出生コホート別死亡率の推移 (男) -1973-2012-

● がん

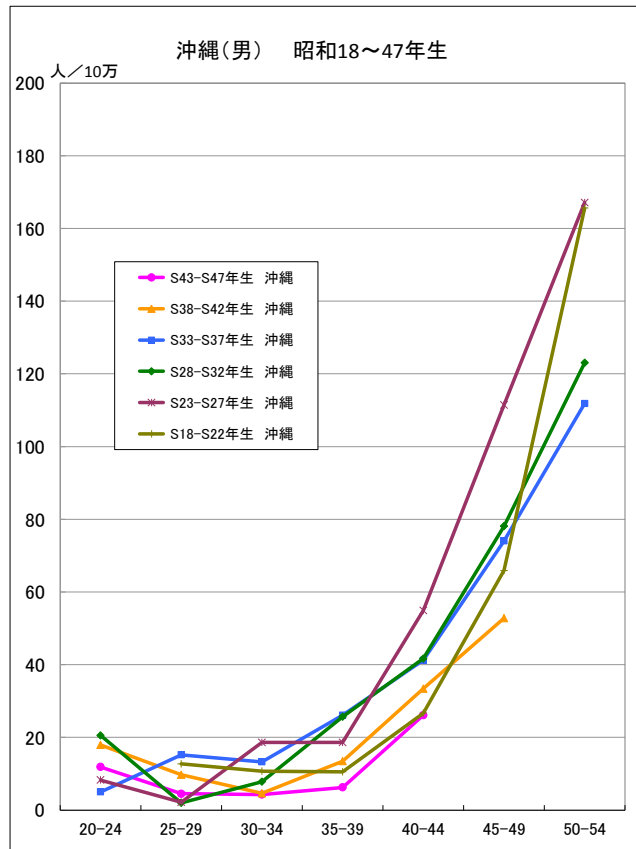


● がん

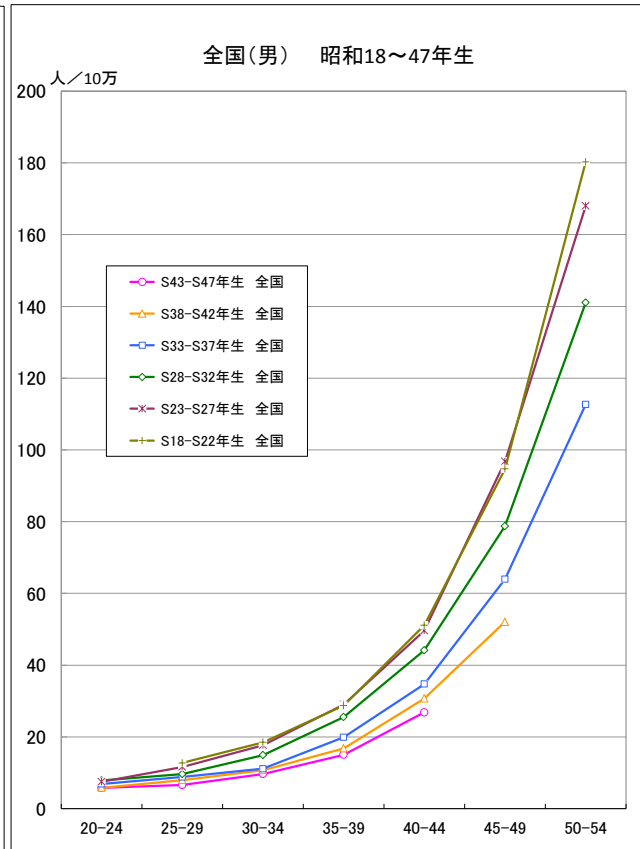


出生コホート別死亡率の推移 (男) -1973-2012-

● がん

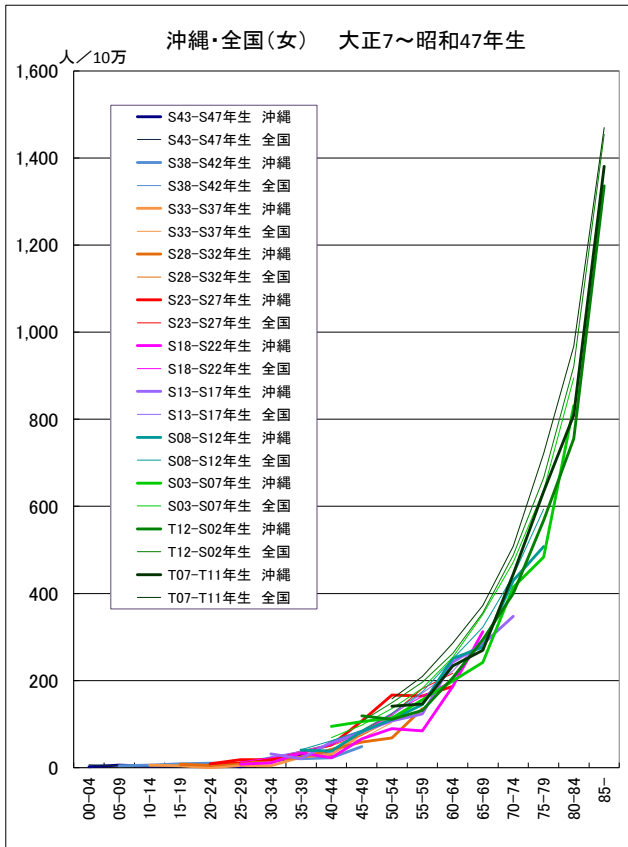


● がん

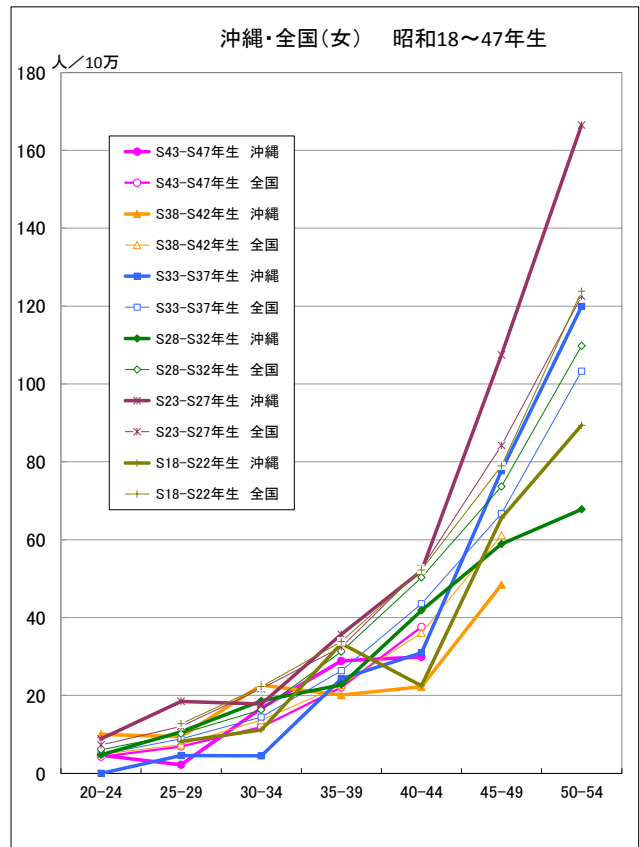


出生コホート別死亡率の推移（女） -1973-2012-

● がん

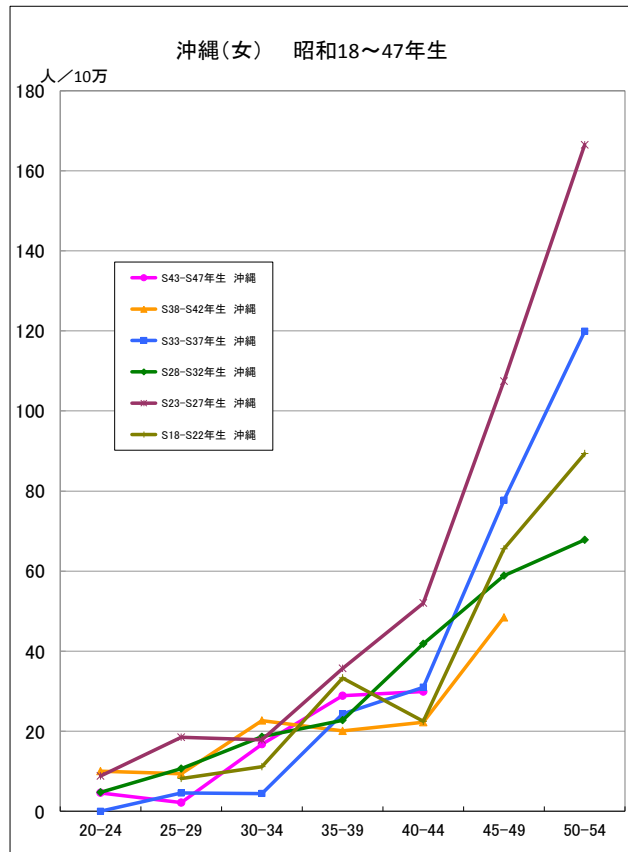


● がん

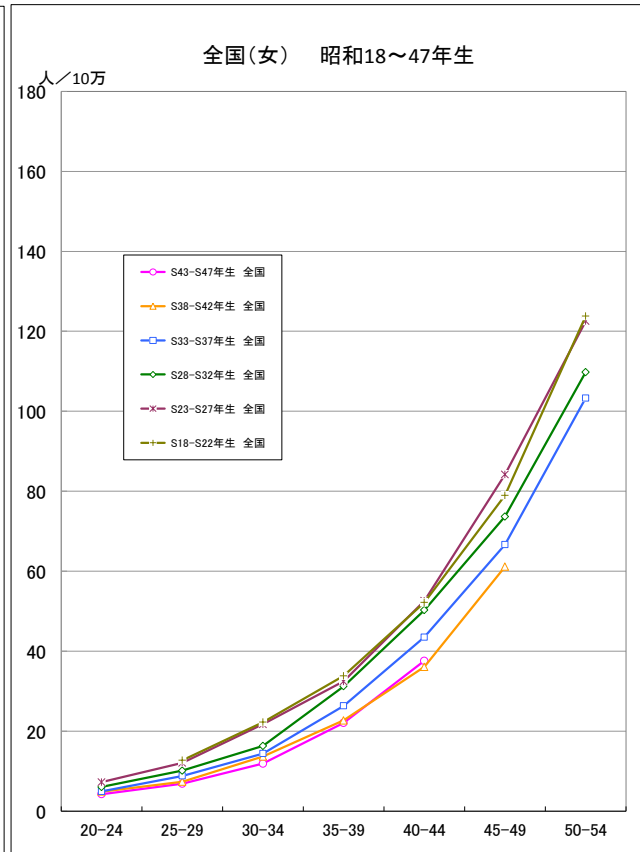


出生コホート別死亡率の推移（女） -1973-2012-

● がん

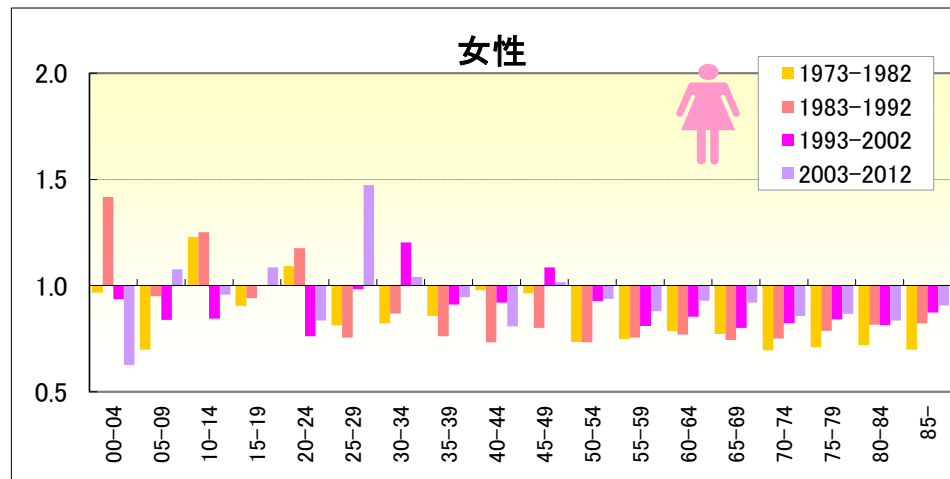
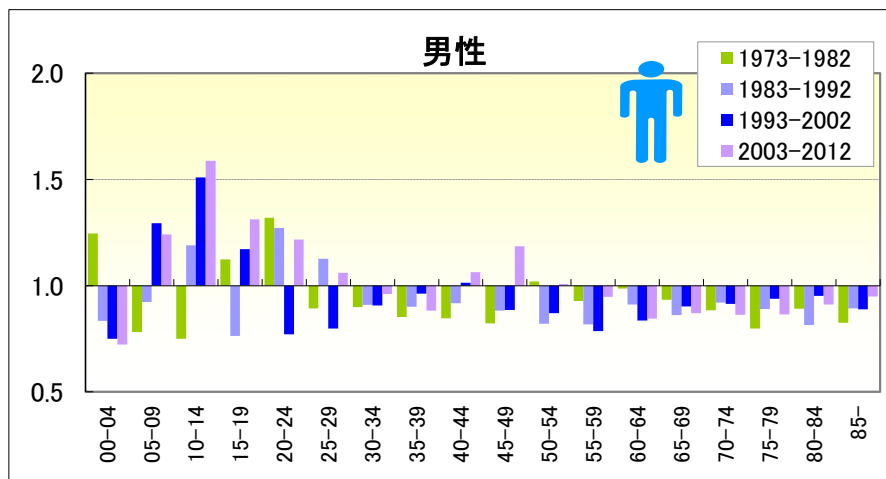


● がん



# がん

● 期間（10年）別にみた年齢階級別死亡率比の推移（沖縄／全国：1973-2012）



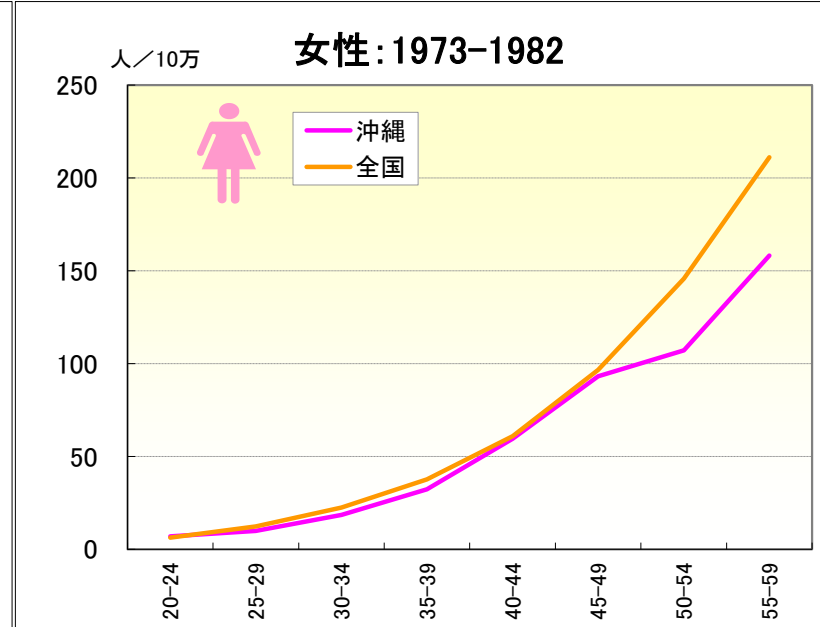
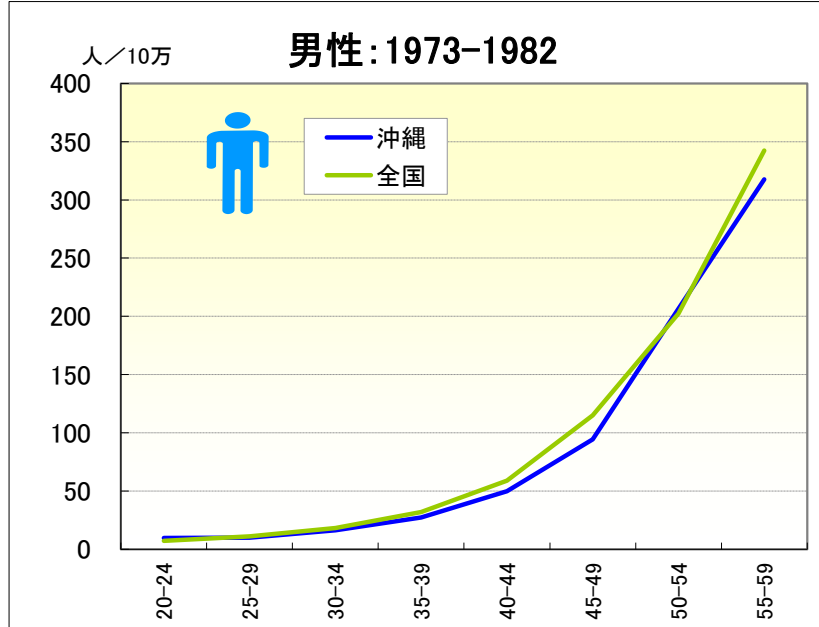
● 年齢階級別、性別\*期間別死亡率比（沖縄：1973-2012年）

		総数	00-04	05-09	10-14	15-19	20-24	25-29	30-34	35-39	40-44	45-49	50-54	55-59	60-64	65-69	70-74	75-79	80-84	85-
男	1973-1977	0.67	1.13	0.52	0.76	0.88	1.54	0.68	0.91	0.84	0.75	0.77	1.05	0.83	1.01	0.90	0.85	0.80	0.78	0.75
	1978-1982	0.73	1.39	1.03	0.73	1.39	1.05	1.11	0.89	0.86	0.95	0.86	1.00	1.01	0.96	0.97	0.91	0.80	0.99	0.87
	1973-1982	0.70	1.25	0.78	0.75	1.12	1.32	0.89	0.90	0.85	0.85	0.82	1.02	0.93	0.99	0.93	0.88	0.80	0.89	0.83
	1983-1987	0.67	0.67	0.57	0.92	0.94	1.30	1.13	0.87	0.79	0.86	0.84	0.83	0.80	0.99	0.88	0.92	0.82	0.76	0.88
	1988-1992	0.70	1.08	1.41	1.53	0.58	1.23	1.11	0.97	1.02	0.96	0.93	0.81	0.83	0.85	0.85	0.92	0.95	0.86	0.91
	1983-1992	0.69	0.83	0.92	1.19	0.76	1.27	1.13	0.91	0.90	0.92	0.88	0.82	0.82	0.91	0.86	0.92	0.89	0.82	0.89
	1993-1997	0.71	0.44	1.29	1.67	1.08	0.76	0.80	0.93	1.02	0.90	0.84	0.92	0.81	0.84	0.92	0.93	0.94	0.94	0.89
	1998-2002	0.71	1.16	1.31	1.31	1.30	0.78	0.80	0.87	0.89	1.16	0.94	0.83	0.76	0.83	0.89	0.90	0.94	0.97	0.89
	1993-2002	0.71	0.75	1.29	1.51	1.17	0.77	0.80	0.91	0.96	1.01	0.89	0.87	0.79	0.84	0.90	0.91	0.94	0.95	0.89
	2003-2007	0.70	0.46	0.85	1.95	0.91	1.08	1.06	1.18	0.83	1.03	1.14	1.02	0.86	0.77	0.85	0.90	0.85	0.99	0.93
2008-2012	0.71	1.00	1.68	1.15	1.78	1.37	1.06	0.72	0.94	1.10	1.24	1.00	1.04	0.91	0.89	0.83	0.88	0.86	0.96	
2003-2012	0.71	0.72	1.24	1.59	1.31	1.22	1.06	0.96	0.88	1.06	1.19	1.01	0.95	0.84	0.87	0.86	0.86	0.91	0.95	
女	1973-1977	0.70	0.98	0.64	1.58	1.04	1.01	0.87	0.92	0.81	1.11	1.02	0.80	0.78	0.85	0.70	0.66	0.72	0.57	0.58
	1978-1982	0.71	0.96	0.76	0.83	0.76	1.21	0.77	0.74	0.91	0.84	0.91	0.68	0.72	0.73	0.84	0.73	0.70	0.84	0.77
	1973-1982	0.71	0.97	0.70	1.23	0.90	1.09	0.81	0.82	0.86	0.98	0.96	0.73	0.75	0.79	0.77	0.70	0.71	0.72	0.70
	1983-1987	0.71	1.35	1.10	1.33	0.87	1.19	0.72	0.83	0.68	0.68	0.70	0.67	0.77	0.82	0.75	0.69	0.77	0.85	0.84
	1988-1992	0.71	1.52	0.77	1.17	1.02	1.16	0.79	0.92	0.84	0.78	0.91	0.80	0.75	0.72	0.74	0.80	0.80	0.79	0.82
	1983-1992	0.71	1.42	0.95	1.25	0.94	1.18	0.76	0.87	0.76	0.73	0.80	0.73	0.76	0.77	0.74	0.75	0.79	0.82	0.82
	1993-1997	0.75	1.43	1.06	0.67	1.05	0.86	0.90	1.17	0.93	0.92	1.10	0.87	0.82	0.83	0.78	0.81	0.87	0.83	0.83
	1998-2002	0.74	0.25	0.52	1.07	0.95	0.65	1.07	1.24	0.89	0.93	1.08	0.98	0.80	0.88	0.82	0.83	0.81	0.80	0.90
	1993-2002	0.75	0.94	0.84	0.84	1.00	0.76	0.98	1.20	0.91	0.92	1.09	0.93	0.81	0.85	0.80	0.82	0.84	0.81	0.87
	2003-2007	0.75	0.75	0.93	1.03	0.98	0.59	1.29	1.17	0.75	0.72	1.11	0.87	0.88	1.01	0.94	0.85	0.86	0.84	0.90
2008-2012	0.73	0.50	1.22	0.88	1.22	1.16	1.69	0.89	1.13	0.90	0.91	1.02	0.89	0.86	0.89	0.87	0.88	0.83	0.91	
2003-2012	0.74	0.63	1.08	0.96	1.09	0.84	1.47	1.04	0.95	0.81	1.02	0.94	0.88	0.93	0.92	0.86	0.87	0.84	0.91	

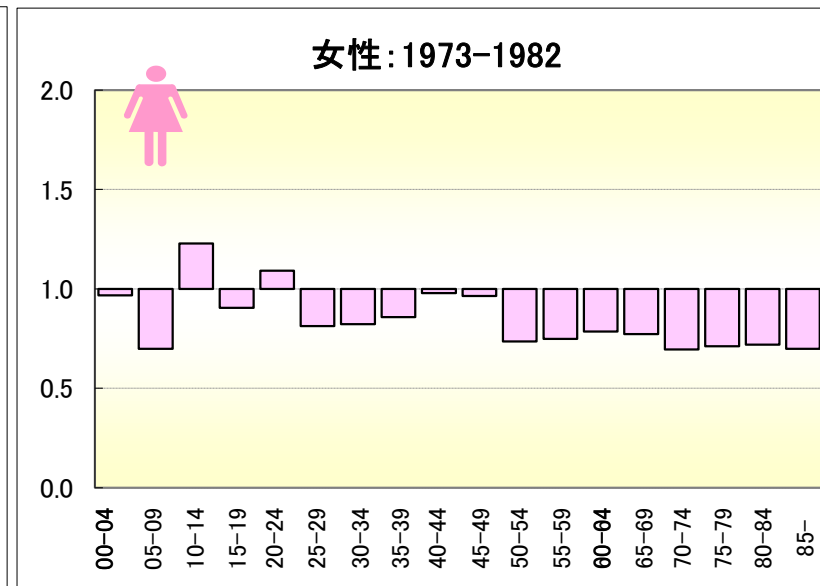
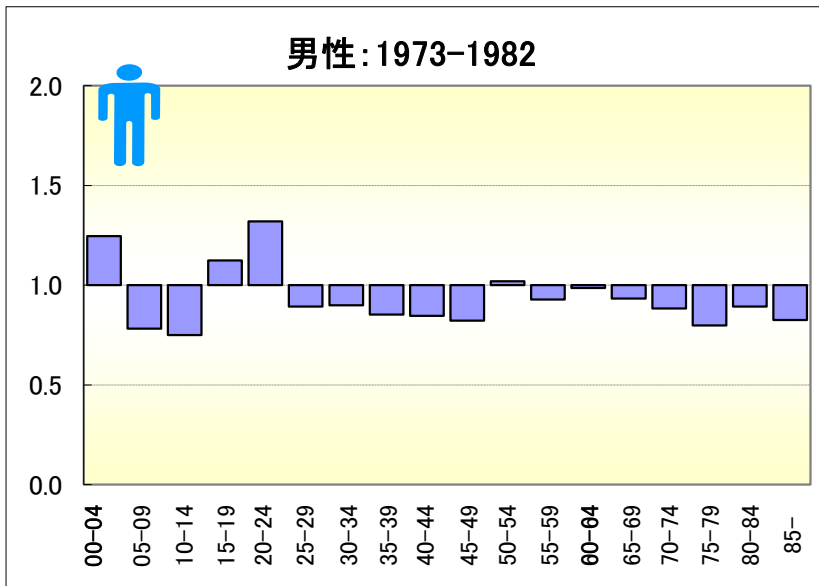


# がん

## ● 期間別にみた年齢階級別死亡率（沖縄、全国：1973-1982）

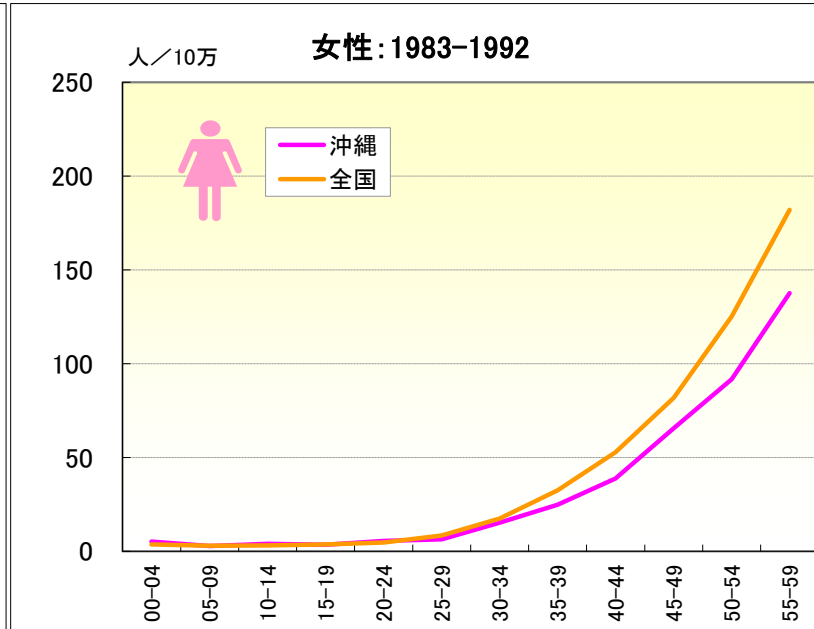
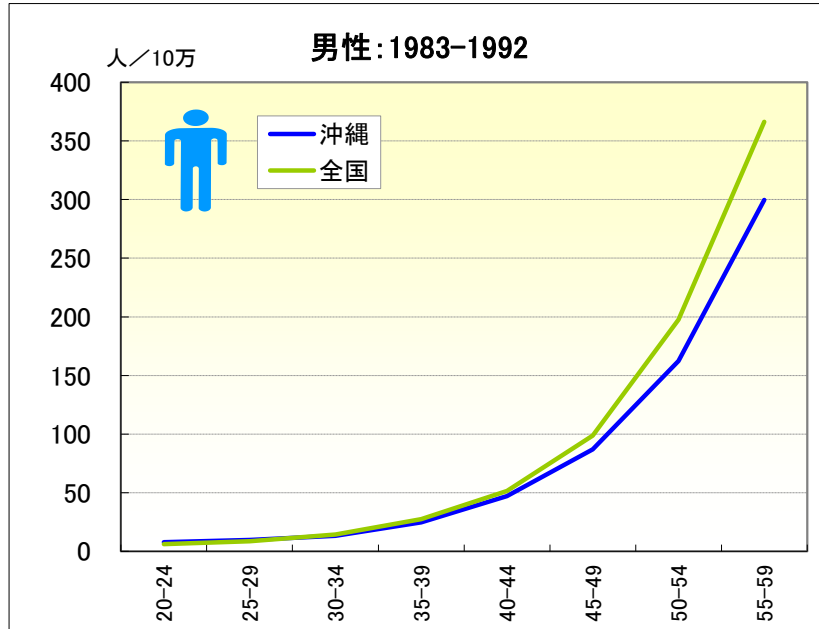


## ● 期間別にみた年齢階級別死亡率比（沖縄／全国：1973-1982）

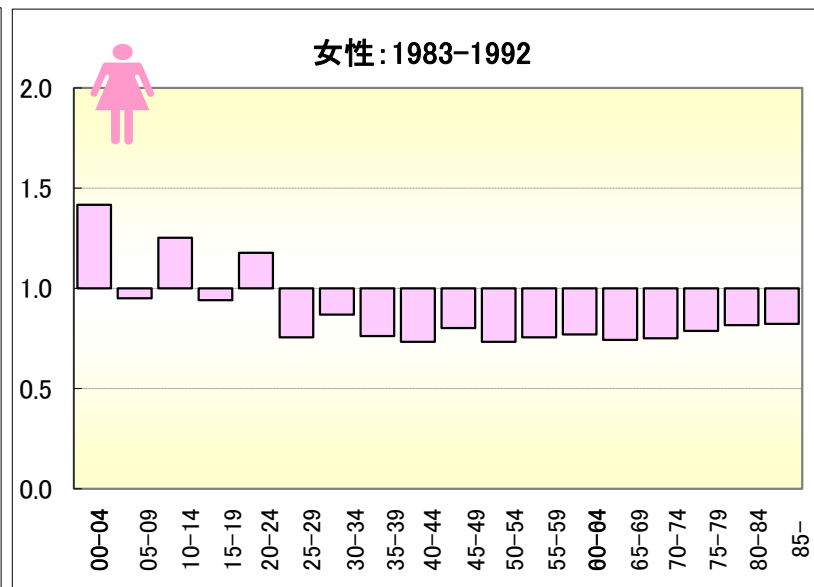
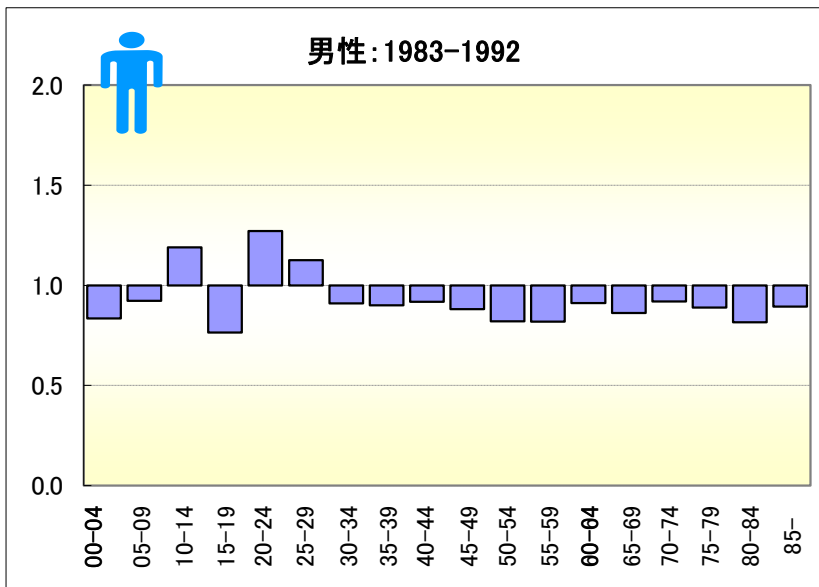


# がん

## ● 期間別にみた年齢階級別死亡率（沖縄、全国：1983-1992）

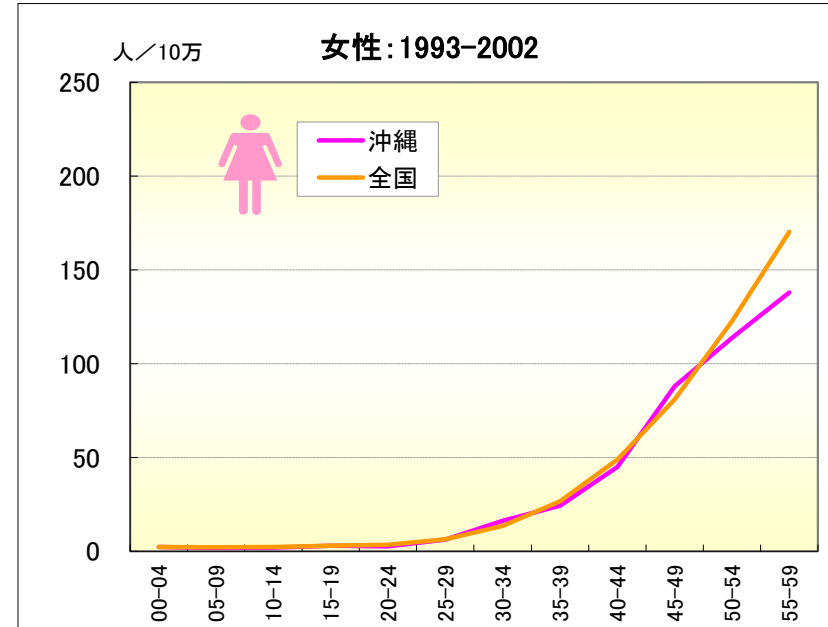
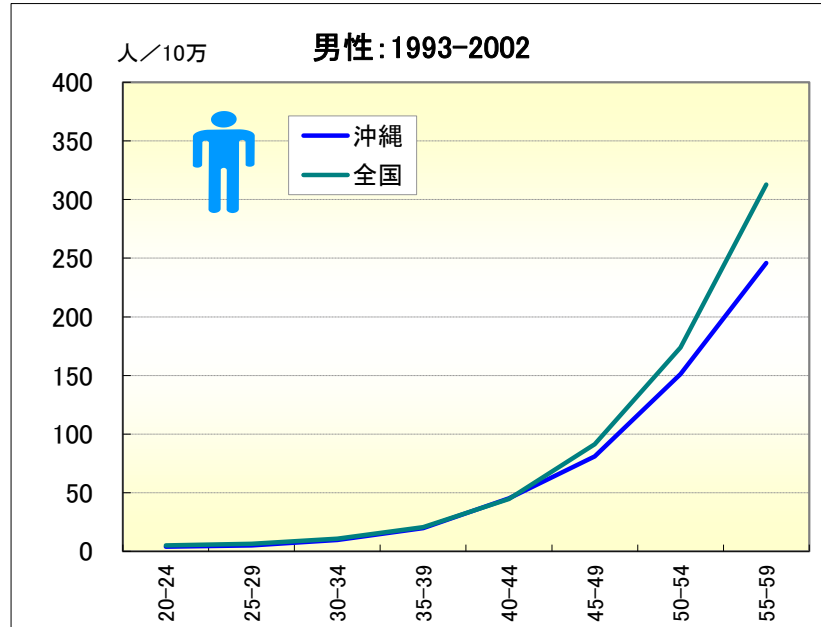


## ● 期間別にみた年齢階級別死亡率比（沖縄／全国：1983-1992）

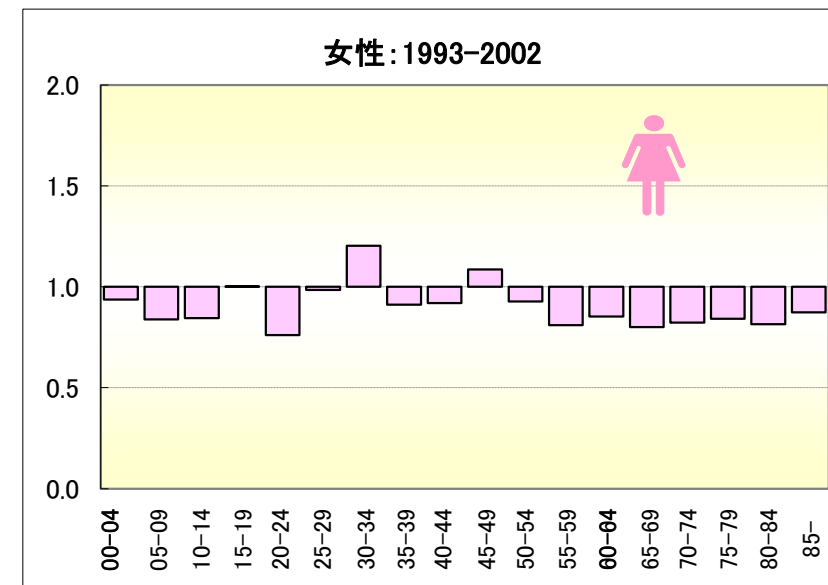
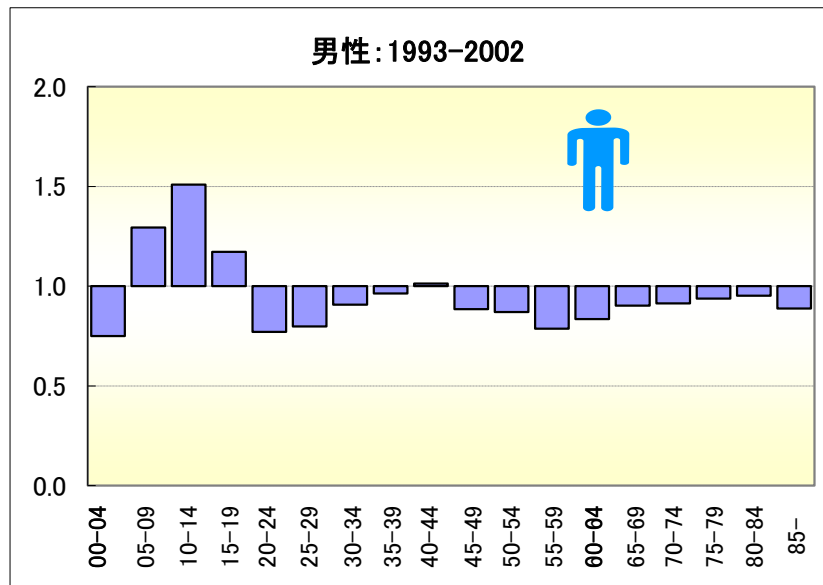


# がん

## ● 期間別にみた年齢階級別死亡率（沖縄、全国：1993-2002）

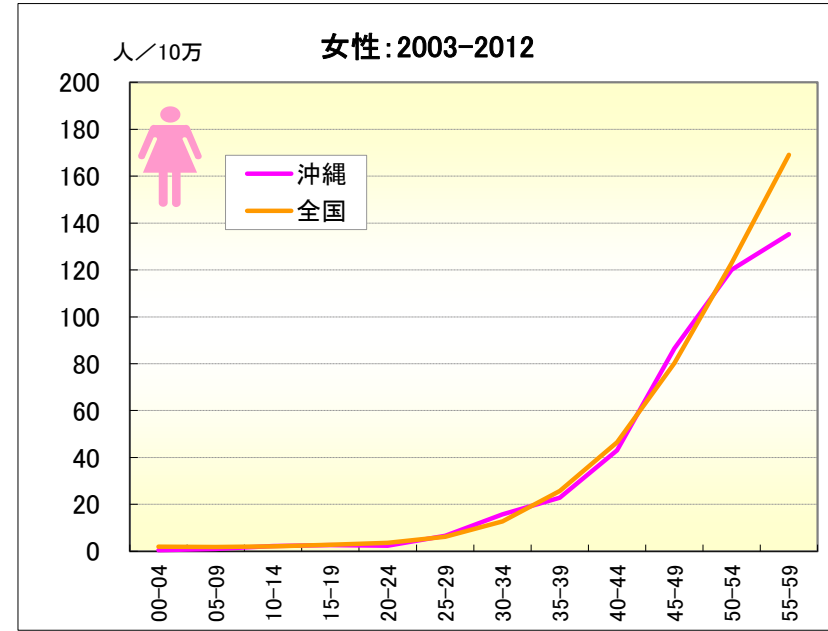
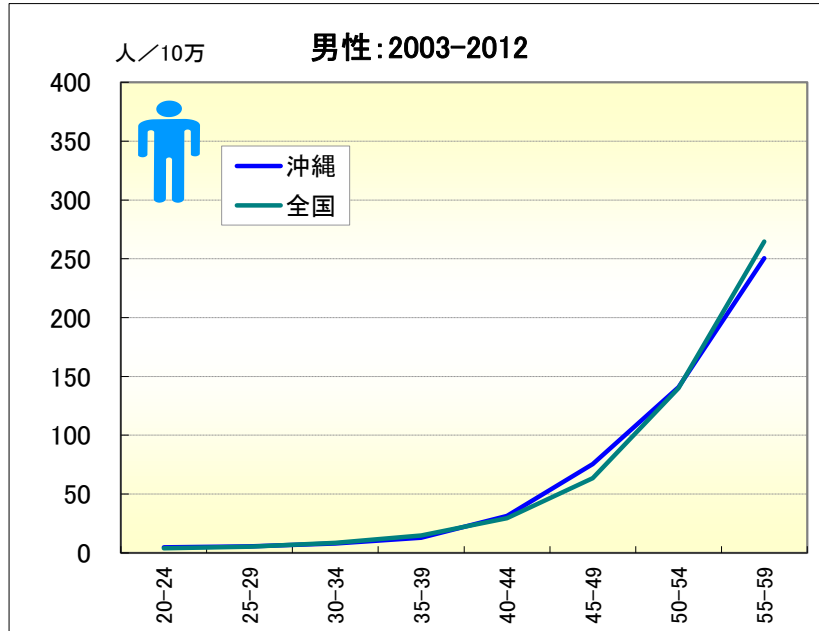


## ● 期間別にみた年齢階級別死亡率比（沖縄／全国：1993-2002）

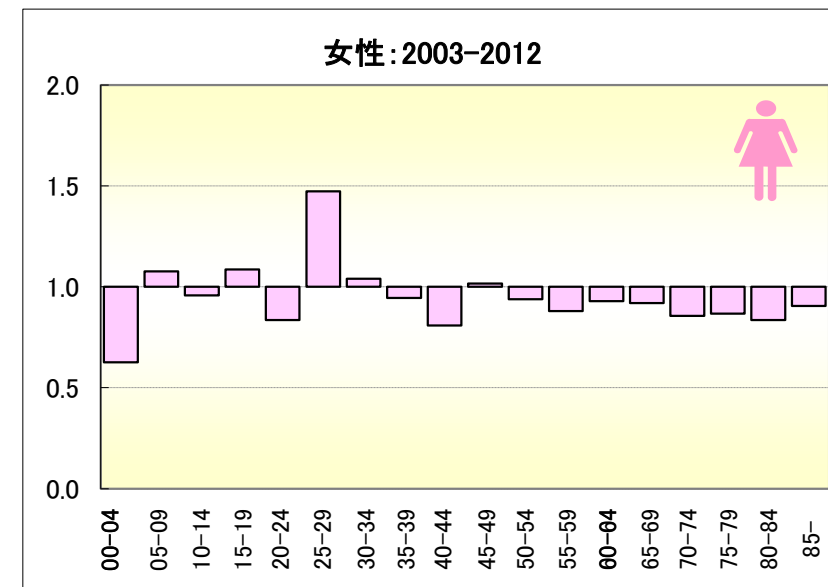
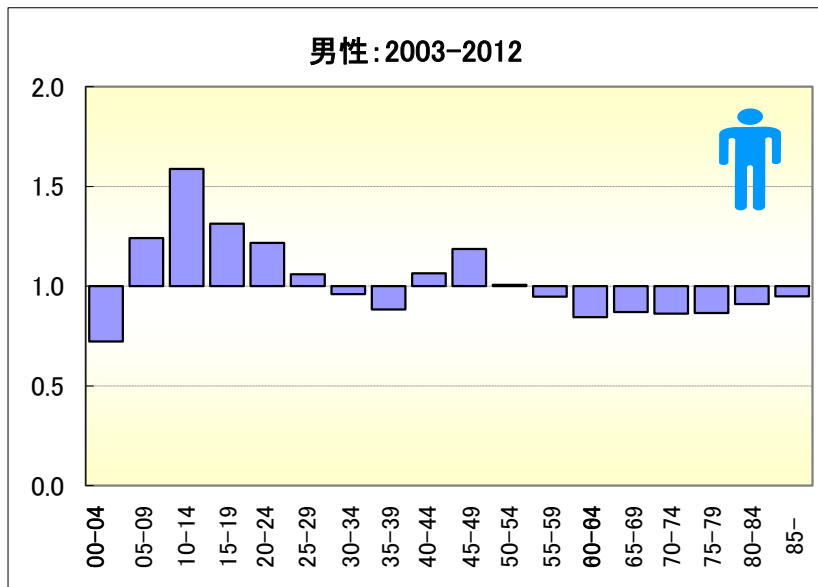


# がん

## ● 期間別にみた年齢階級別死亡率（沖縄、全国：2003-2012）



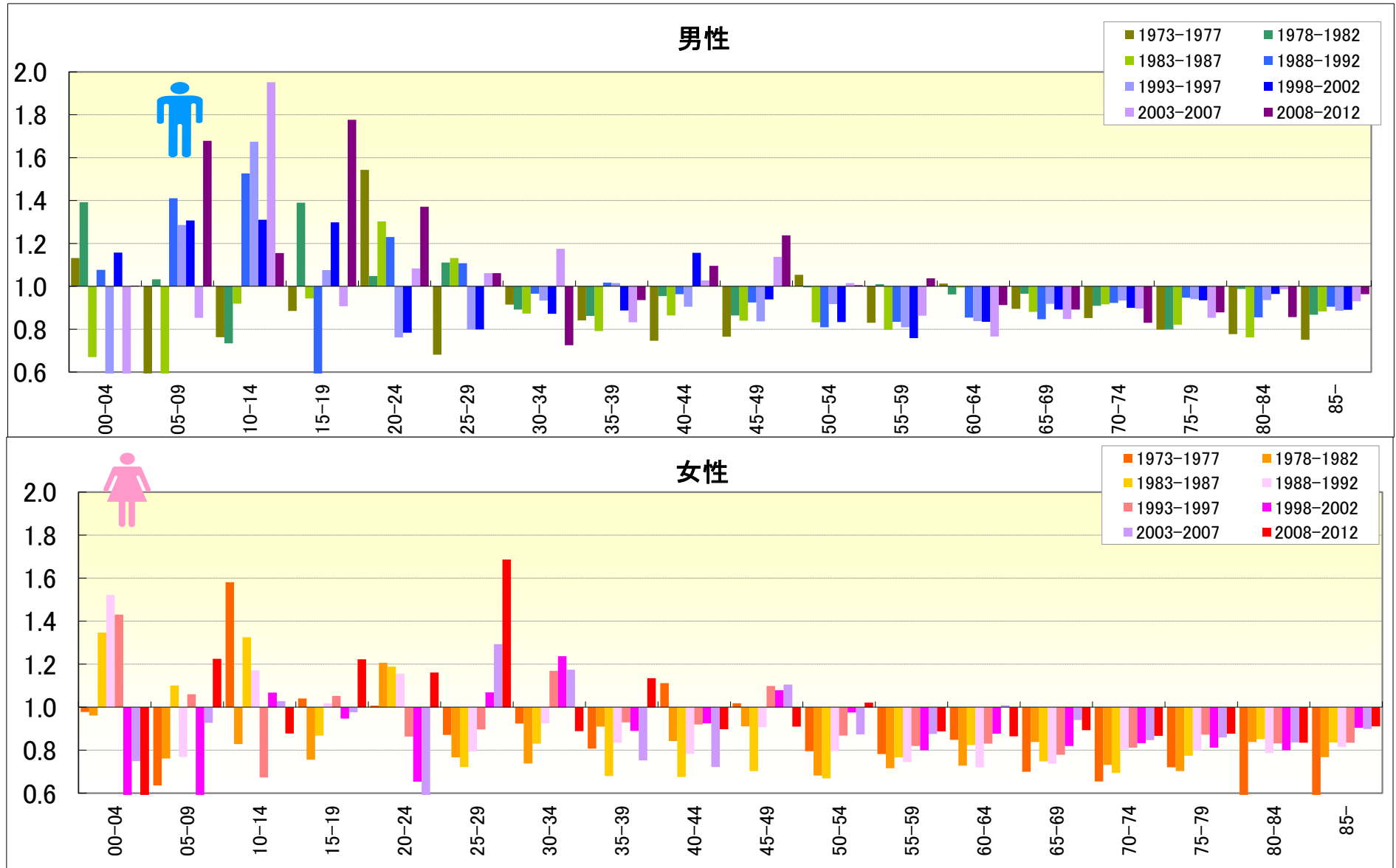
## ● 期間別にみた年齢階級別死亡率比（沖縄／全国：2003-2012）



[INDEXに戻る！](#)

# がん

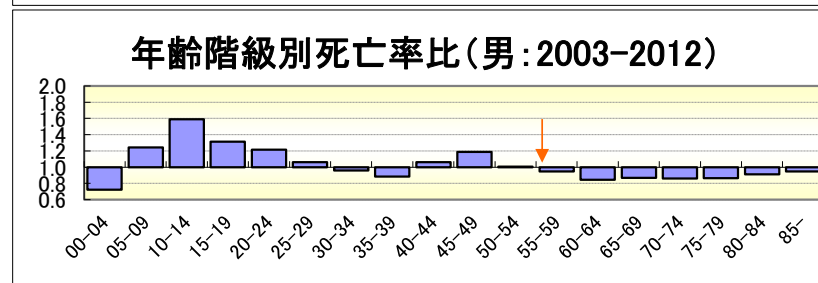
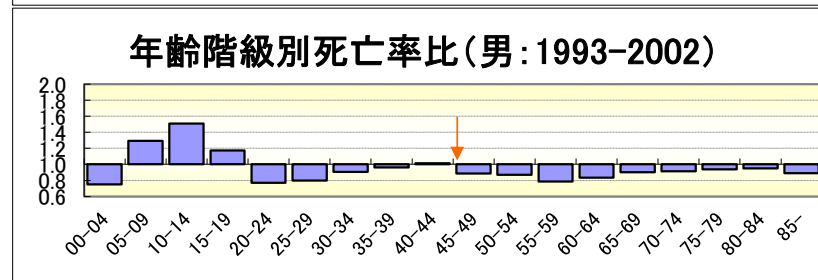
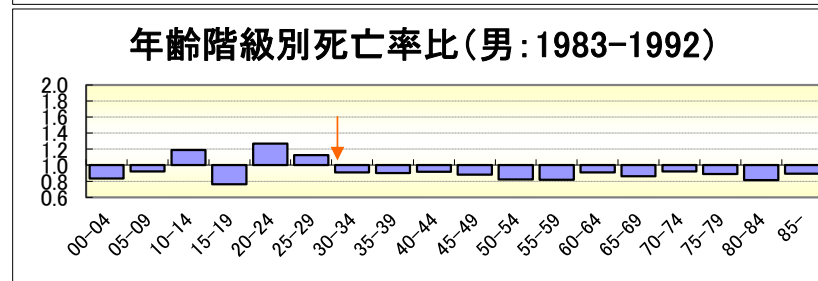
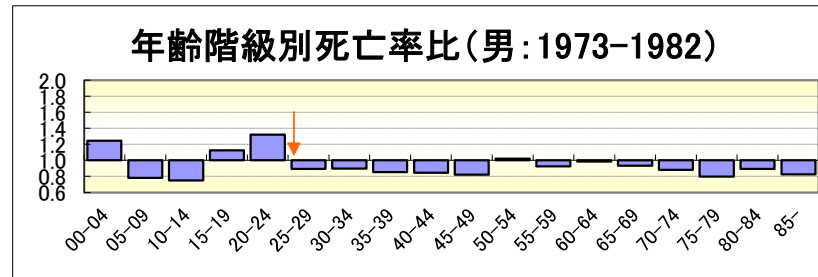
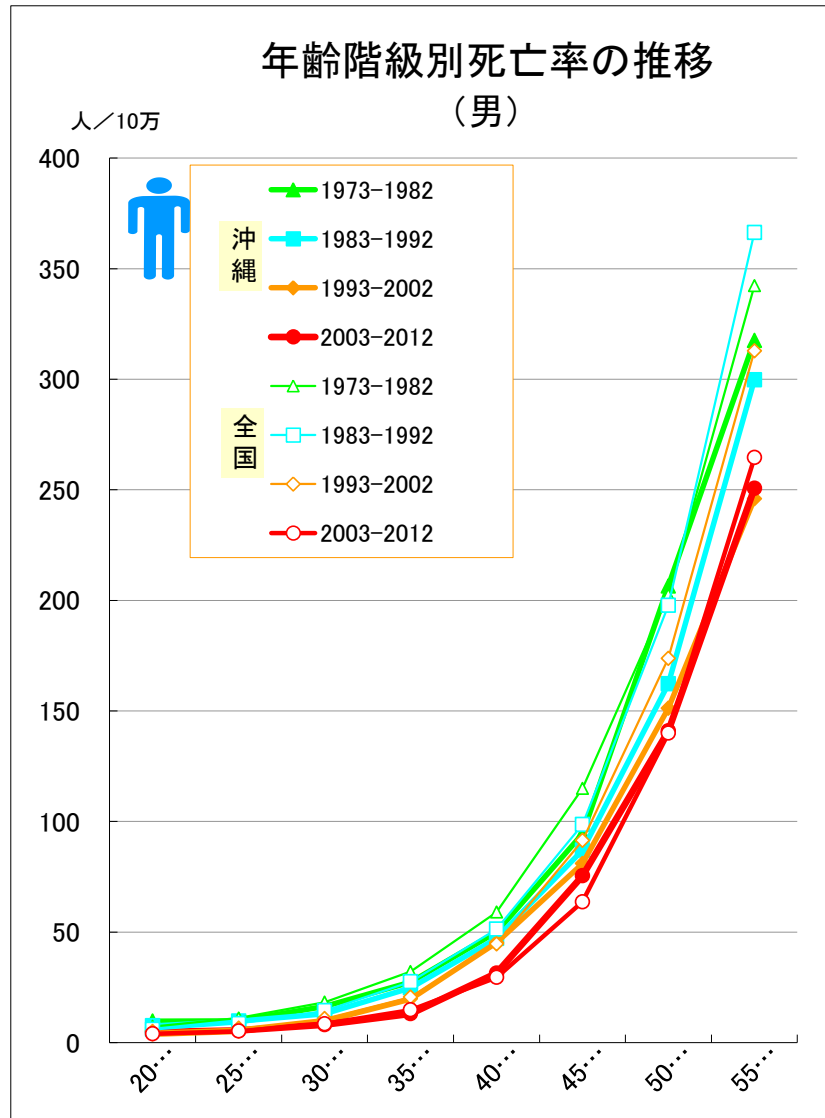
● 期間（5年）別にみた年齢階級別死亡率比の推移（沖縄／全国：1973-2012）





# がん

● 期間（10年）別にみた年齢階級別死亡率および年齢階級別死亡率比の推移（沖縄・全国：男1973-2012）





# がん

● 期間（10年）別にみた年齢階級別死亡率および年齢階級別死亡率比の推移（沖縄・全国：女1973-2012）

